

5 DE MARÇO

BOLERO CONCERTANTE

IGAYARA ÍNDIO

LENTO



8



16

SÓ BOMBO



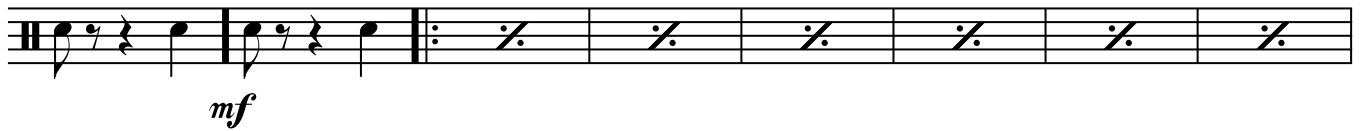
24



33



41



49



58



67

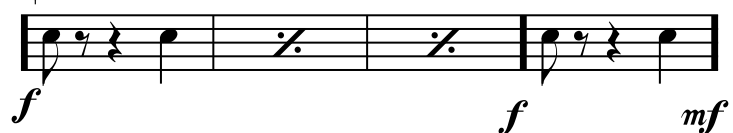


75



§

⊖



5 DE MARÇO

2³

SÓ BOMBO

First musical staff. It begins with a treble clef, a key signature of one sharp (F#), and a 2/3 time signature. The first measure contains a quarter note F#, an eighth rest, and a quarter note G. This is followed by a repeat sign. The subsequent seven measures each contain a single slash (/), indicating a drum hit. The staff concludes with a double bar line. The dynamic marking *p* is positioned below the first measure.

91

Second musical staff. It consists of eight measures, each containing a single slash (/). The staff ends with a double bar line. The dynamic marking *mf* is located at the bottom right of the staff.

100

Third musical staff. It begins with a treble clef, a key signature of one sharp (F#), and a 2/3 time signature. The first six measures each contain a single slash (/). The seventh measure contains a quarter note F#, a quarter note G, and a quarter note A. The eighth measure contains an eighth note F#, an eighth note G, and an eighth rest. The staff concludes with a repeat sign. A first ending bracket labeled "1." spans the seventh and eighth measures.

108 2.

PRESTO

2

Fourth musical staff. It begins with a treble clef, a key signature of one sharp (F#), and a 2/3 time signature. The first measure contains a quarter note F#, a quarter note G, and a quarter note A. The second measure contains a half note F#. The third and fourth measures each contain a dotted half note F#. The fifth measure contains a quarter note F#, a quarter note G, and a quarter note A. The sixth measure contains a quarter note F#, a quarter note G, and a quarter note A. The seventh measure contains a quarter note F#, a quarter note G, and a quarter note A. The eighth measure contains a dotted half note F#. The staff concludes with a double bar line. The dynamic marking *rit.* is positioned below the third measure. A first ending bracket labeled "2." spans the first four measures. A second ending bracket labeled "2" is positioned above the eighth measure.