

Tuba (C)

Copacabana

Samba

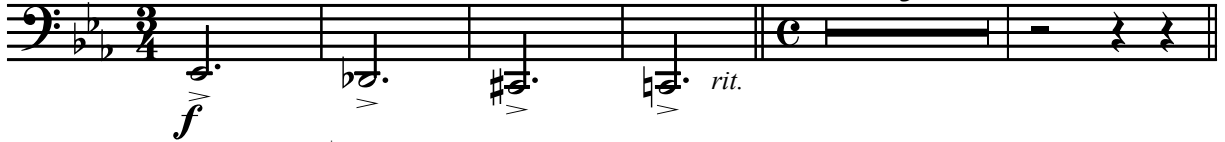
Braguinha / Alberto Ribeiro

arranjo: José Carlos Ligiéro

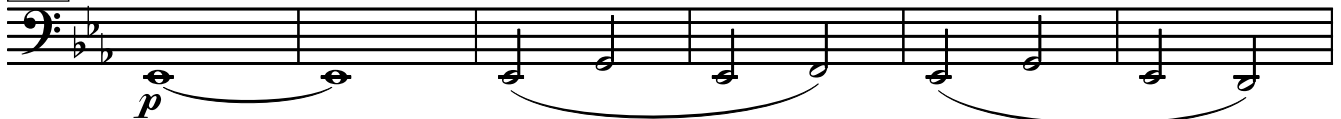
revisão: Marcelo Jardim

Allegretto (♩=96)

Moderato (♩=78)



9 Andante Moderato (♩=84)

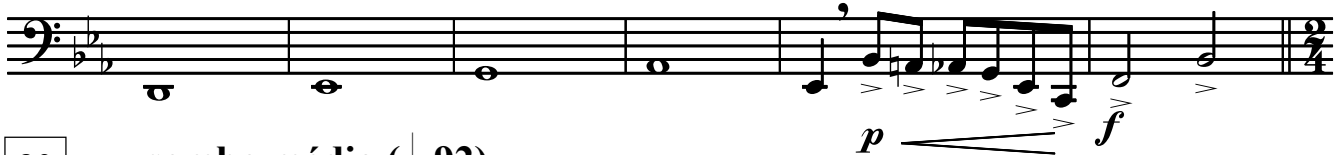


15

19



24



30 samba médio (♩=92)



35



41

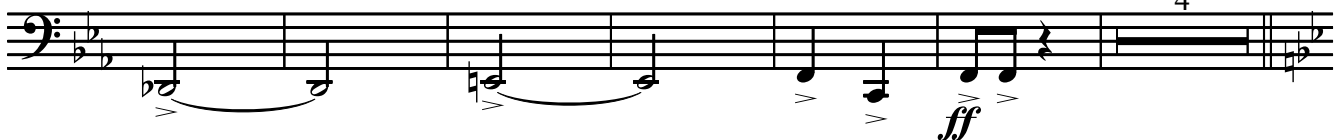
44



48

cadência bateria

4



$\text{♩} = 102$



66



71

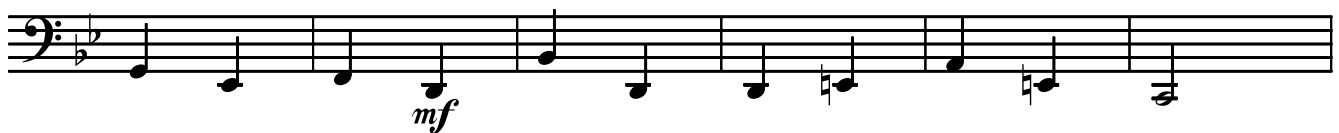
74



76



83



89

90



94

al Coda ⦿ 

100

D.S. al Coda

 ⦿ **ff**

110

