

# Copacabana

**Tuba B $\flat$**   
(parte extra)

Samba

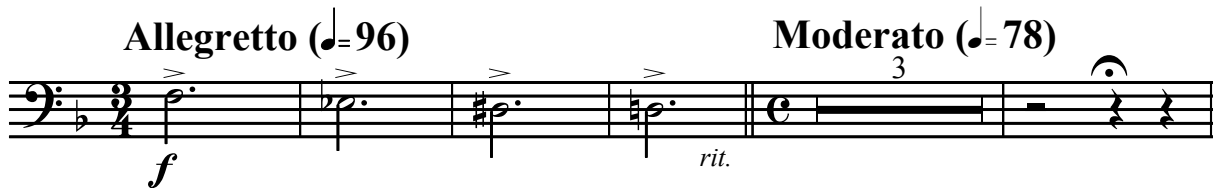
Braguinha / Alberto Ribeiro

arranjo: José Carlos Ligiéro

revisão: Marcelo Jardim

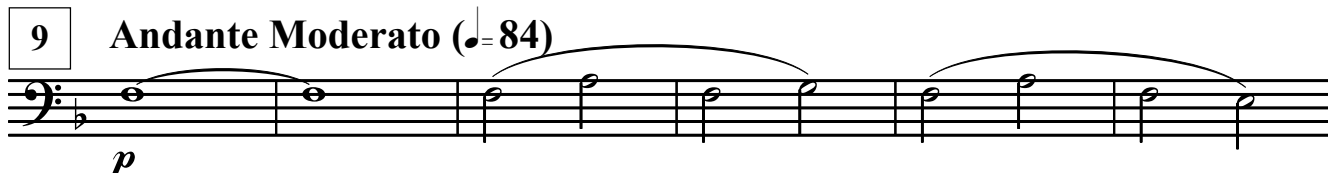
**Allegretto** (♩=96)

**Moderato** (♩=78)



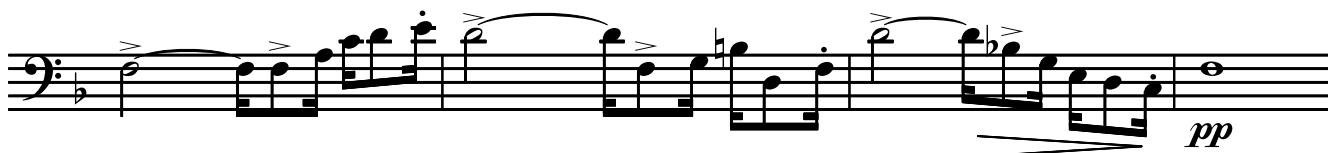
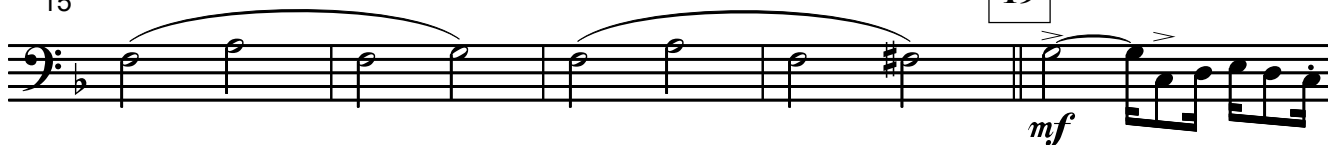
9

**Andante Moderato** (♩=84)

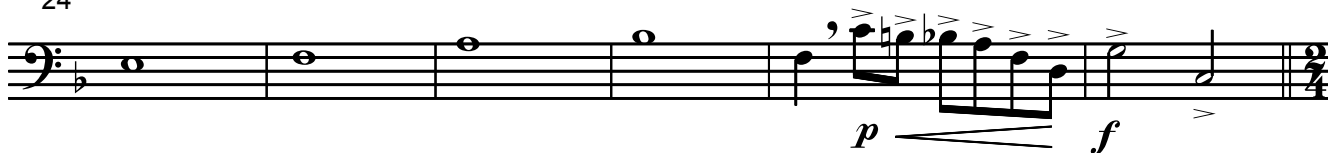


15

19



24



30

**samba médio** (♩=92)



35



41

44



48

cadência bateria



$\text{♩} = 102$



66



71

74



76



82



89

90



95

al Coda  $\text{Coda symbol}$ 

100

D.S. al Coda

 $\text{Coda symbol}$ 

110

