

# Copacabana

**Tuba E $\flat$**   
(parte extra)

Samba

Braguinha / Alberto Ribeiro

arranjo: José Carlos Ligiéro

revisão: Marcelo Jardim

**Allegretto** (♩=96)

**Moderato** (♩=78)



**9** **Andante Moderato** (♩=84)



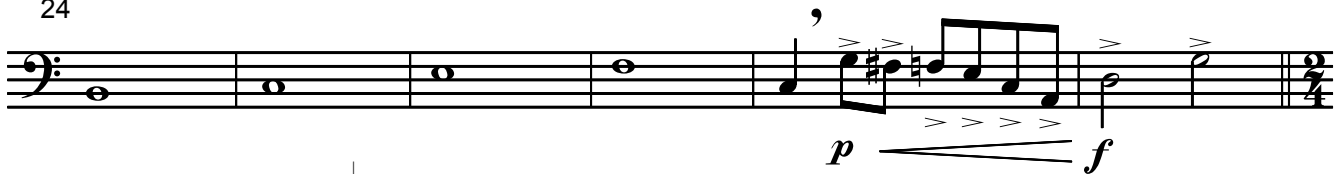
15



**19**



24



**30** **samba médio** (♩=92)



35



41

**44**



48



$\text{♩} = 102$



66



71

74



76



83



89

90



94

al Coda  $\text{⦿}$ 

100

D.S. al Coda

 $\text{⦿}$ 

110

