

Estrela de Friburgo

Oboé

Polka Concerto para Trompete

Joaquim Antônio Naegele
revisão Marcelo Jardim

Andante

The musical score for the Oboe part of 'Estrela de Friburgo' is written in 2/4 time. It begins with a key signature of two flats (B-flat and E-flat) and a common time signature (C). The tempo is marked 'Andante'. The score is divided into measures, with measure numbers 6, 10, 14, 20, 22, 28, 30, 40, 42, 49, and 55 indicated in boxes. The piece features several dynamic markings: *f* (forte) and *mf* (mezzo-forte). It includes various musical notations such as slurs, ties, and triplets. The tempo changes from 'Andante' to 'a tempo' and then to 'Marcato'. The key signature changes from two flats to one flat (B-flat) at measure 30. The piece concludes with a 'Coda' section marked with a Coda symbol. The score is for the Oboe part, as indicated by the 'Oboé' label at the top left.

cadência tpt. a tempo 4

6 *f* cadência tpt.

10 *f* cadência tpt.

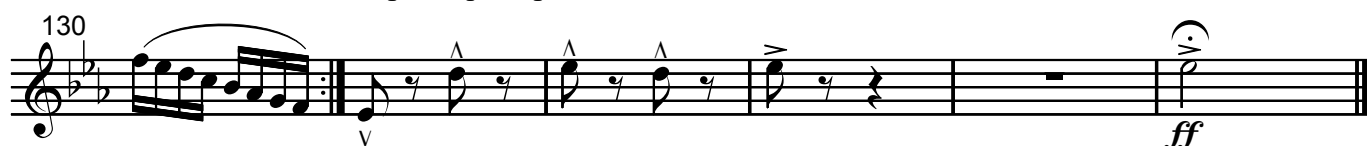
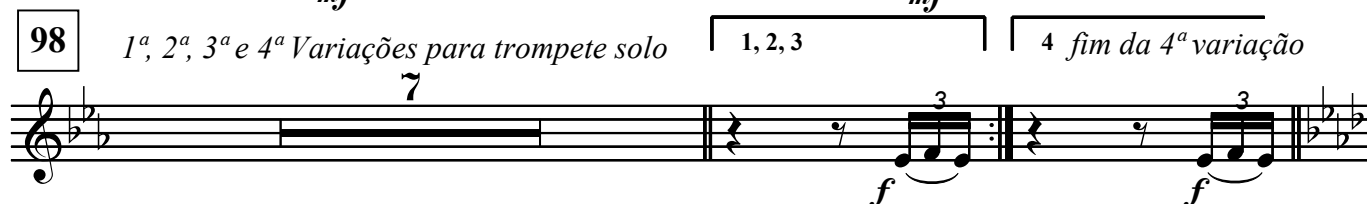
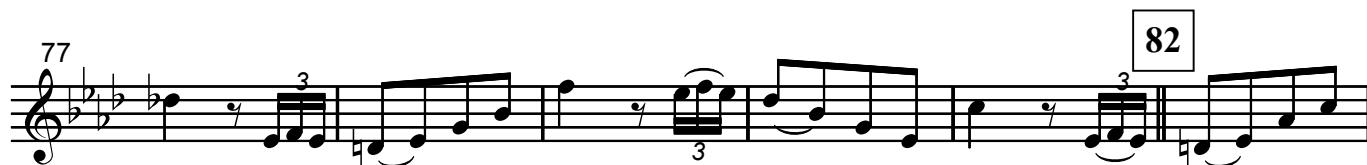
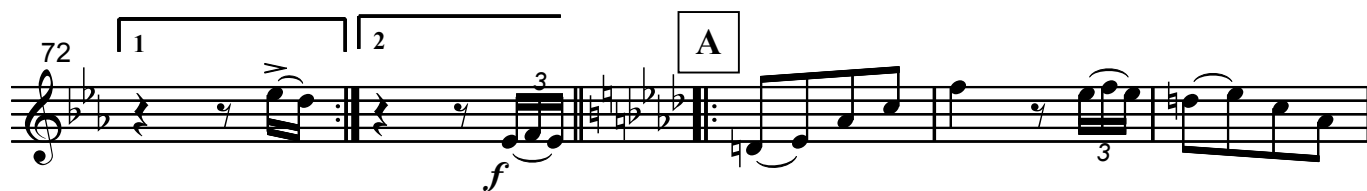
14 6 20 Marcato cadência tpt. 22 6

28 *f* cadência tpt. 30 2 8 40 2

42 *mf* al Coda 1 2 *f*

49

55 57 10 3 *mf*



Pio mezzo