

Suite Homen Aranha: De Volta Ao Lar

Comp. Michael Giacchino

Adap. SGT Christian Cunha (EB)
Contato: Christiantc.98@gmail.com

$\text{♩} = 70$

Grandioso

pp *mf legato*

Toque Apenas na Primeira Vez

Fast

$\text{♩} = 140$

ff

3

A **15**

B

mf legato

C

D

E

cresc. poco sempre

F **Grandioso**

f legato

To Coda

ff **fff**

Meno mosso

$\text{♩} = 125$

G *p* *mp*

H

mf *f*

I $\text{♩} = 80$

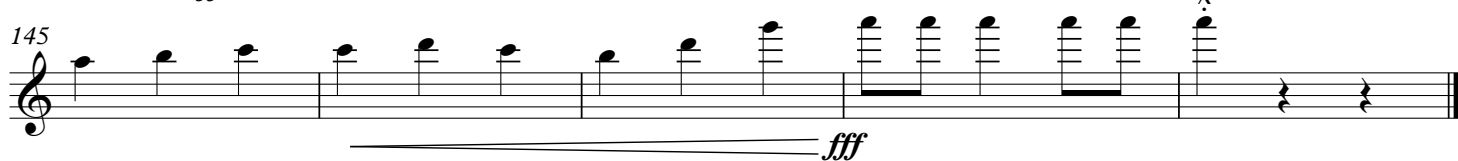
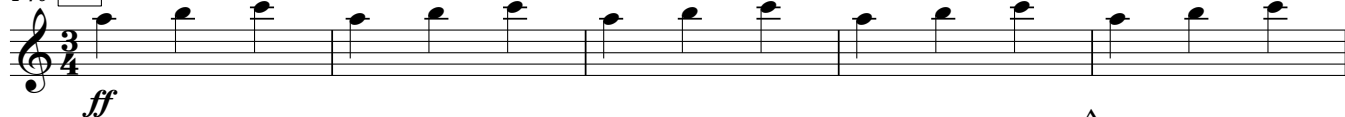
3 **2** **rit.**

Meno mosso

Flauta

118 **J** Pesante ♩ = 70

D.S. al Coda

140 **M**

Clarinete em Sib 1 **Suite Homen Aranha: De Volta Ao Lar**

Comp. Michael Giacchino

Adap. SGT Christian Cunha (EB)
Contato: Christiantc.98@gmail.com

♩ = 70

Grandioso

pp *mf legato*

Fast
♩ = 140
Toque Apenas na Primeira Vez

2

ff *mf*

A

staccato

B

C

D

cresc. poco sempre

E

69 **F** **Grandioso** **To Coda**

f legato

77

ff *fff*

Meno mosso
♩ = 125

85 **G**

p *mp*

98 **H**

mf *f*

4

113 **I** ♩ = 80

mf

rit.

Meno mosso
J **Pesante** ♩ = 70

f

122

126 **K** **Solo Flauta**

mf dolce

136 **L** **D.S. al Coda**

mf

140 **M**

ff

145

fff

Suite Homen Aranha: De Volta Ao Lar

Comp. Michael Giacchino

Adap. SGT Christian Cunha (EB)
Contato: Christiantc.98@gmail.com

♩ = 70 **Grandioso**

pp *mf legato*

Fast **♩ = 140**
Toque Apenas na Primeira Vez **A**

11 *ff* *mf staccato*

22

31 **B** *legato*

41 **C**

49 **D**

53 *cresc. poco sempre*

61 **E**

69 **F** **Grandioso** *f legato* **To Coda**

77 *ff* *fff*

Meno mosso **G** **♩ = 125**

85

87 *tr* *p* *tr* *mp* *tr*

99 *mf* *tr* *f* *H* *4*

113 *I* ♩ = 80 *3* *rit.* *p*

Meno mosso
118 *J* Pesante ♩ = 70 *f*

122 //

126 *K* 10 *L* *mf* D.S. al Coda

140 *M* *ff*

145 *fff*

Clarinete em Sib 3

Para a Banda da EsPCEx

Suite Homen Aranha: De Volta Ao Lar

Comp. Michael Giacchino

Adap. SGT Christian Cunha (EB)

Contato: Christiantc.98@gmail.com

$\text{♩} = 70$ **Grandioso**

pp *mf legato*

8

Fast
 $\text{♩} = 140$
Toque Apenas na Primeira Vez

13 **A**

ff *mf staccato*

22

30 **B**

legato

39 **C**

47 **D**

53 *cresc. poco sempre*

60 **E**

69 **F** **Grandioso**
f *legato*

76 **To Coda**
fff **Meno mosso**

84 **G** $\text{♩} = 125$
p *tr*

93 *tr* *mp* *mf* *tr*

103 (tr) **H**
f 4

113 **I** $\text{♩} = 80$
p *rit.* 3

118 **J** **Meno mosso** **Pesante** $\text{♩} = 70$
f

122 //

126 **K** 10 **L** *mf* **D.S. al Coda**

140 **M** $\text{♩} = 70$ *ff*

145 *fff*

Saxofone alto 1,2

Para a Banda da EsPCEx

Suite Homen Aranha: De Volta Ao Lar

Comp. Michael Giacchino

Adap. SGT Christian Cunha (EB)
Contato: Christiantc.98@gmail.com

$\text{♩} = 70$

Grandioso

pp *mf*

9

Fast

$\text{♩} = 140$

ff *p*

17 **A**

25

33 **B** 8 **C**

48 **D** 3 *f* *cresc.poco sempre*

58 **E**

67 **F** **Grandioso** *f*

76 **To Coda** *ff* //

85 **G** **Meno mosso** $\text{♩} = 125$ 4

89 Solo Trompa

mp *mf*

102 **H**

f

109 **I** ♩ = 80 rit.

pp

118 **J** Meno mosso Pesante ♩ = 70

f

122

126 **K** 7

mf dolce

136 **L** D.S. al Coda

mf

140 **M**

ff

145

fff

Saxofone tenor 1,2

Suite Homen Aranha: De Volta Ao Lar

Comp. Michael Giacchino

Adap. SGT Christian Cunha (EB)
Contato: Christiantc.98@gmail.com

♩ = 70 **Grandioso**

Fast **♩ = 140**

ff **p staccato**

A

B **8** **C**

D **3** **f** **cresc. poco sempre**

E

F **Grandioso** **To Coda**

ff **//**

G **Meno mosso** **♩ = 125** **6** **2** **p** **mp**

96 **2** **2** **mf**

103 **H**

f

110 **I** ♩ = 80 rit.

pp

Meno mosso
118 **J** Pesante ♩ = 70

f

122

126 **K** 7

mf dolce

136 **L** D.S. al Coda

mf

140 **M**

ff

145

fff

Saxofone barítono

Suite Homen Aranha: De Volta Ao Lar

Comp. Michael Giacchino

Adap. SGT Christian Cunha (EB)

Contato: Christiantc.98@gmail.com

$\text{♩} = 70$

Grandioso

pp

Fast

$\text{♩} = 140$

mf

ff

p

A

p

B

C

D

f

mf cresc. poco sempre

E

F **Grandioso**

f

To Coda

G **Meno mosso**

$\text{♩} = 125$

6

p

mp

2

2

mf

2

103 **H**

f

111 **I** $\text{♩} = 80$ *p* **Meno mosso** **J** **Pesante** $\text{♩} = 70$ *rit.*

117 *f*

122 *ff* //

126 **K** **L** **D.S. al Coda** *mf*

140 **M** *ff*

145 *fff*

Trompa em Fá

Para a Banda da EsPCEx

Suite Homen Aranha: De Volta Ao Lar

Comp. Michael Giacchino

Adap. SGT Christian Cunha (EB)

Contato: Christiantc.98@gmail.com

♩ = 70 **Grandioso**

mf legato

9 **Fast** ♩ = 140

ff p

17 **A**

p

26

f

33 **B**

mf

41 **C**

f

49 **D**

f cresc.poco sempre

60 **E**

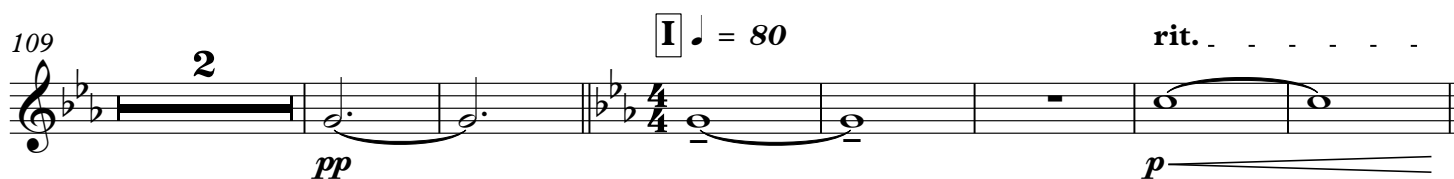
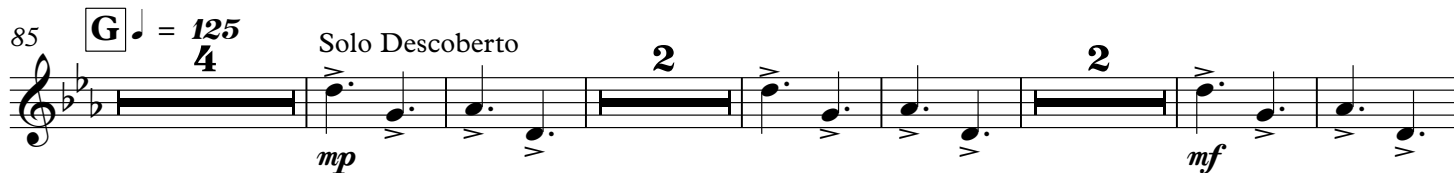
f

69 **F** Grandioso

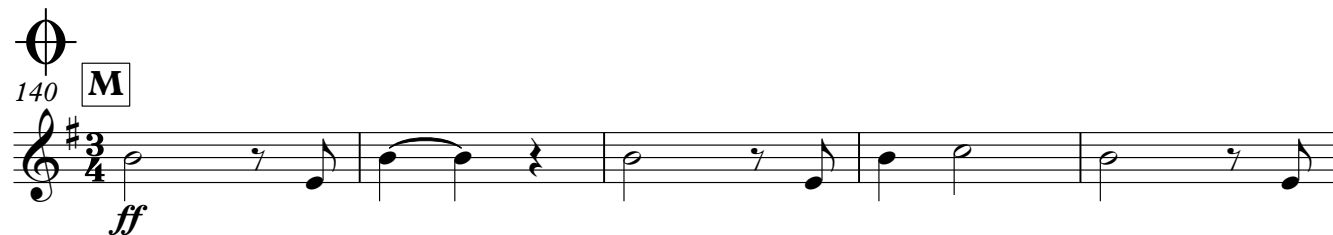
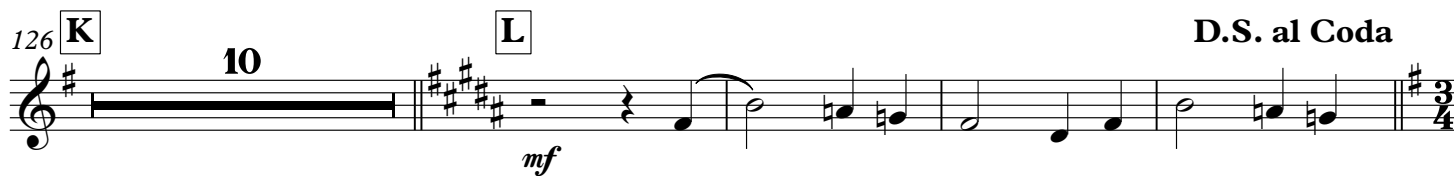
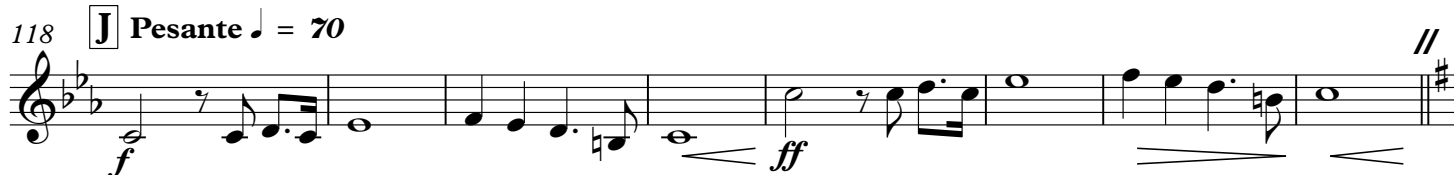
To Coda



Meno mosso



Meno mosso



Trompete em Sib 1 **Suite Homen Aranha: De Volta Ao Lar**

Comp. Michael Giacchino

Adap. SGT Christian Cunha (EB)
Contato: Christiantc.98@gmail.com

Grandioso
♩ = 70
3
mf legato

Fast
♩ = 140
[A] Toque Apenas na Primeira Vez
con sord.
pp

B ff
senza sord. 8
f p f p f p f p f

C 4
p f p f p f p f

D 3
8
[E]

65

F **Grandioso**
7
To Coda

// **Meno mosso**
83 [G] ♩ = 125 18 [H] 4

113 [I] 3 2 [J] **Meno mosso**
Pesante ♩ = 70
f ff

125 // [K] 9 [L] **D.S. al Coda**
pp mf

140 [M]

144 fff

Trompete em Sib 2 **Suite Homen Aranha: De Volta Ao Lar**

Comp. Michael Giacchino

Adap. SGT Christian Cunha (EB)
Contato: Christiantc.98@gmail.com

Grandioso
♩ = 70
3
mf legato

Fast
♩ = 140
Toque Apenas na Primeira Vez
13 3 A 14 con sord.
pp

33 8 4
f *p* *f* *p* *f* *p* *f* *p* *f*
D E

49 3 8
F **Grandioso** 7 To Coda

65 77 //

Meno mosso
♩ = 125
85 18 H 4

♩ = 80 rit. *f*

113 3 2 J **Meno mosso**
Pesante ♩ = 70
f

122 // K 9
ff *pp*

136 L D.S. al Coda

140 M

144 *fff*

Suite Homen Aranha: De Volta Ao Lar

Comp. Michael Giacchino

Adap. SGT Christian Cunha (EB)

Contato: Christiantc.98@gmail.com

Grandioso
 ♩ = 70
 3
mf legato

Fast
 ♩ = 140
 Toque Apenas na Primeira Vez
 13 **A** 3 14 con sord. *pp*

B *ff* **C** 33 senza sord. 8 4 *f* *p* *f* *p* *f* *p* *f* *p* *f*

D 49 3 8 **E**

F **Grandioso** 65 7 **To Coda**

77 //

Meno mosso
 ♩ = 125 **G** 85 18 **H** 4

f

I 113 3 2 **J** **Meno mosso** **Pesante** ♩ = 70 *f* *ff*

K 125 9 **L** *pp* *mf* **D.S. al Coda**

M 140

144 *fff*

Trombone 1

Para a Banda da EsPCEx

Suite Homen Aranha: De Volta Ao Lar

Comp. Michael Giacchino

Adap. SGT Christian Cunha (EB)
Contato: Christiantc.98@gmail.com

$\text{♩} = 70$ **Grandioso**

pp *mf* **Fast** $\text{♩} = 140$
Toque Apenas na Primeira Vez

9 *ff* 3

17 **A** 16 **B** *p* *mf* *p* *mf* *p* *mf* *p* *mf* *p* *mf*

38 **C** *p* *mf* *p* *mf* *p* *mf* *p* *mf* *p* *mf* *p* *mf*

44 *p* *mf* *p* *mf* *p* *mf* *p* *mf* *p* *mf* *p* *mf*

49 **D** *f* *mf cresc. poco sempre*

61 **E**

67 **F** **Grandioso** *f*

76 **To Coda** //

85 **G** **Meno mosso** $\text{♩} = 125$ 18 **H** *f*

108 2

Meno mosso

Pesante ♩ = 70

rit.

113 **I** ♩ = 80
3

J

p ————— *f* *ff*

123

K

pp < *mf* > *pp* < *mf* > *pp* < *mf* >

132

L

D.S. al Coda

pp < *mf* > *pp* < *mf* >

M

140

145

fff

Trombone 2

Para a Banda da EsPCEx

Suite Homen Aranha: De Volta Ao Lar

Comp. Michael Giacchino

Adap. SGT Christian Cunha (EB)
Contato: Christiantc.98@gmail.com

♩ = 70

Grandioso

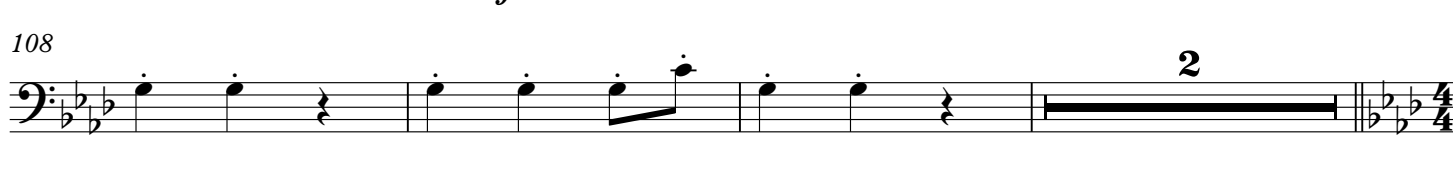
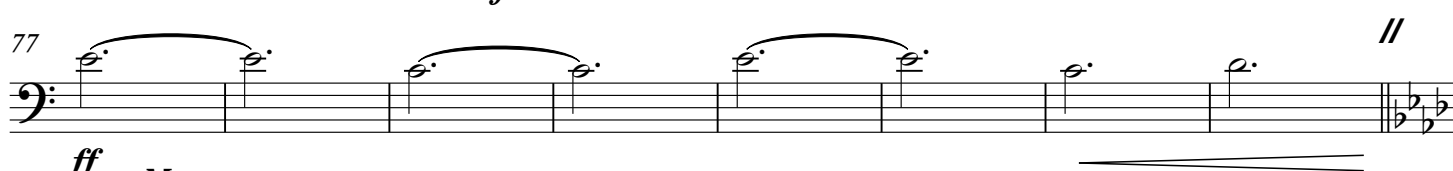
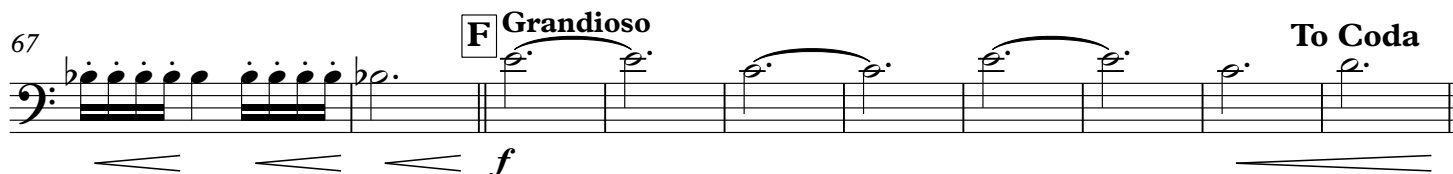
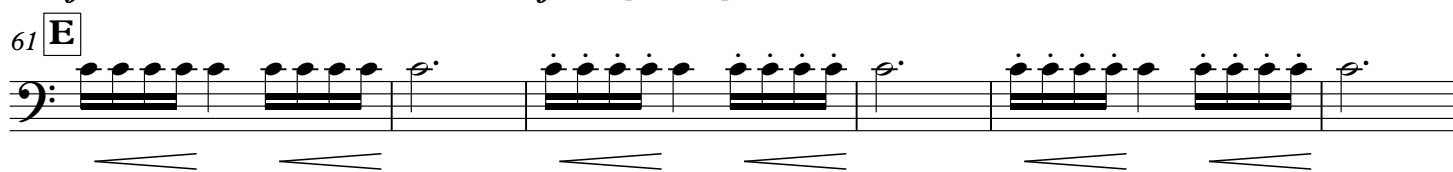
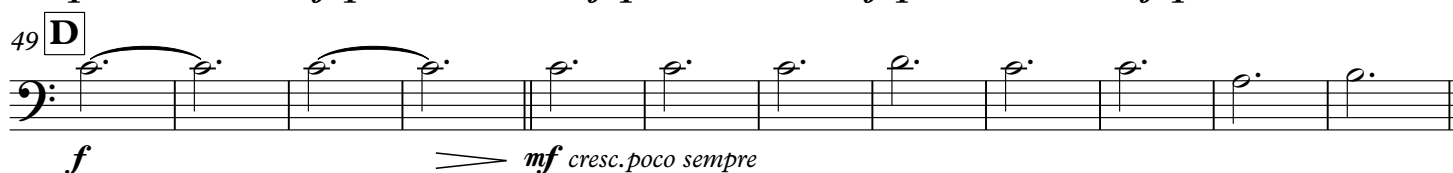
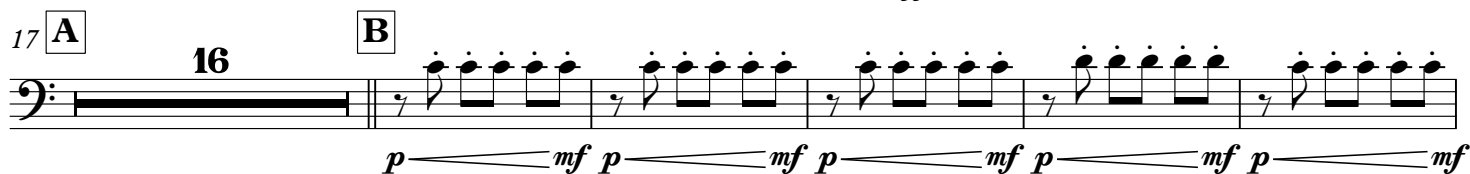
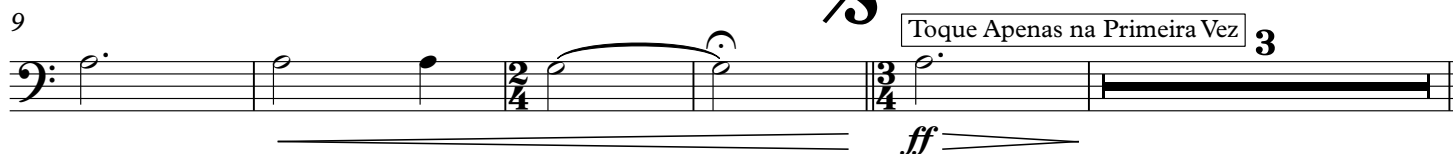


Fast

♩ = 140

Toque Apenas na Primeira Vez

3



$\text{♩} = 80$ **rit.** **Meno mosso**
J Pesante $\text{♩} = 70$

113 **I** **3**

p *f* *ff*

123 **K**

pp *mf* *pp* *mf* *pp* *mf*

132 **L** **D.S. al Coda**

pp *mf* *pp* *mf*

Φ 140 **M**

ff *fff*

Trombone baixo

Para a Banda da EsPCEx

Suite Homen Aranha: De Volta Ao Lar

Comp. Michael Giacchino

Adap. SGT Christian Cunha (EB)
Contato: Christiantc.98@gmail.com

$\text{♩} = 70$ **Grandioso**

pp *mf*

Fast
 $\text{♩} = 140$ **A** **B**
Toque Apenas na Primeira Vez

ff *mf*

38 **C**

45 **D**

f

53

mf *cresc. poco sempre*

61 **E**

69 **F** **Grandioso** **To Coda**

f

77

85 **G** **Meno mosso**
 $\text{♩} = 125$ **6** **2**

p *mp*

96 **2** **2**

mf

103 **H**

f

111 **I** ♩ = 80 *p* rit.

117 **J** Meno mosso Pesante ♩ = 70 *f* *ff*

124 **K** *pp* *mf* *pp* *mf* *pp* *mf*

132 **L** D.S. al Coda *pp* *mf* *pp* *mf*

140 **M** *ff* *fff*

Suite Homen Aranha: De Volta Ao Lar

Comp. Michael Giacchino

 Adap. SGT Christian Cunha (EB)
 Contato: Christiantc.98@gmail.com

$\text{♩} = 70$ **Grandioso**

mf legato

Fast $\text{♩} = 140$
 Toque Apenas na Primeira Vez

11 **ff** **A** **mp**

22 **B** **mf**

35

41 **C**

48 **D** **f** **mf** cresc. poco sempre

60 **E**

67 **F** **Grandioso** **f** **To Coda**

77 //

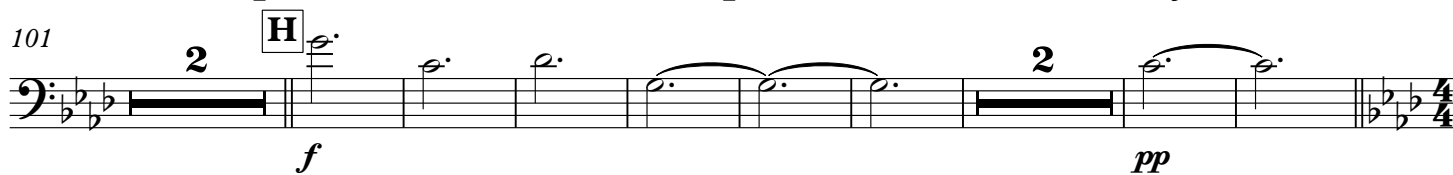
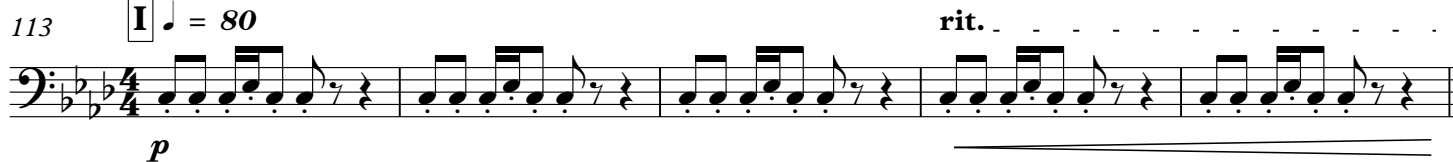
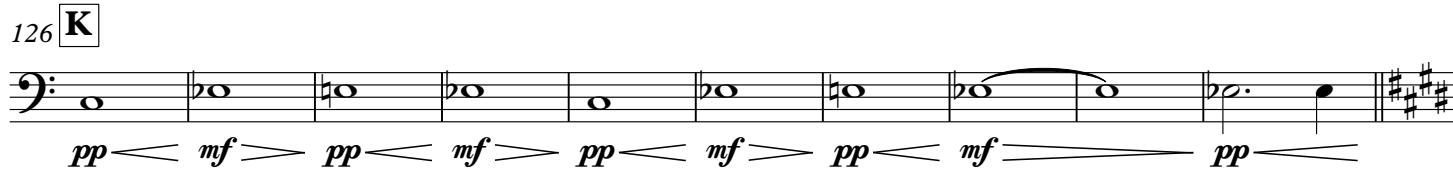
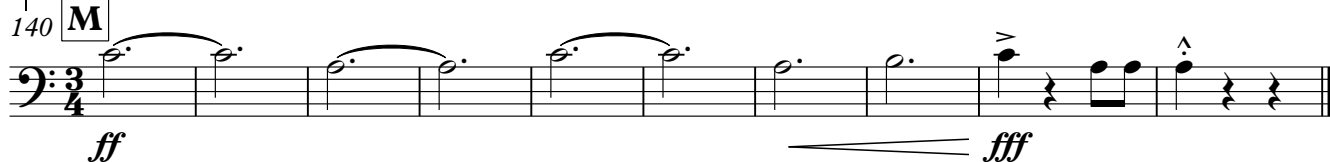
ff

85 **G** **Meno mosso** $\text{♩} = 125$ **5**

90



101

113 **I** ♩ = 80118 **J** **Meno mosso**
Pesante ♩ = 70126 **K**136 **L** **D.S. al Coda**140 **M**

Tuba C

Para a Banda da EsPCEx

Suite Homen Aranha: De Volta Ao Lar

Comp. Michael Giacchino

Adap. SGT Christian Cunha (EB)
Contato: Christiantc.98@gmail.com

$\text{♩} = 70$ **Grandioso**

pp *mf*

9

Fast
 $\text{♩} = 140$
Toque Apenas na Primeira Vez 3

17 **A** 16 **B**

mf

40 **C**

49 **D**

f *mf cresc. poco sempre*

61 **E**

69 **F** **Grandioso** **To Coda**

f //

77

ff

Meno mosso
 $\text{♩} = 125$

85 **G** 6 2

p *mp*

96 2 2

mf

103

H

111

2

I ♩ = 80

rit. - - - -



117

Meno mosso

J Pesante ♩ = 70

124

//

K

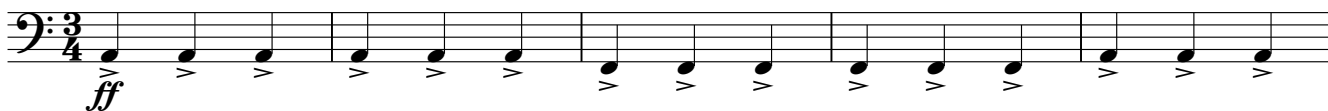
132

L

D.S. al Coda



140

M

145



Tuba Mib

Para a Banda da EsPCEx

Suite Homen Aranha: De Volta Ao Lar

Comp. Michael Giacchino

Adap. SGT Christian Cunha (EB)
Contato: Christiantc.98@gmail.com

$\text{♩} = 70$ **Grandioso**

pp *mf*

Fast
 $\text{♩} = 140$
Toque Apenas na Primeira Vez

A 3 16

B 33 *mf*

C 41

D 49 *f* *mf cresc. poco sempre*

E 61

F 69 **Grandioso** *f* **To Coda**

G 85 **Meno mosso**
 $\text{♩} = 125$ 6

91

p *mp* *mf*

103 **H**

f

111

p **I** ♩ = 80 *rit.*

117

f *ff* **J** Pesante ♩ = 70 *Meno mosso*

124

pp *mf* *ff* **K**

132

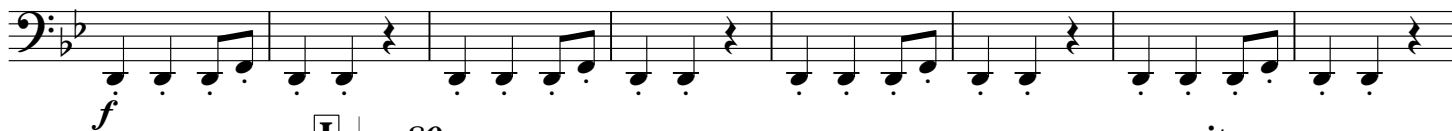
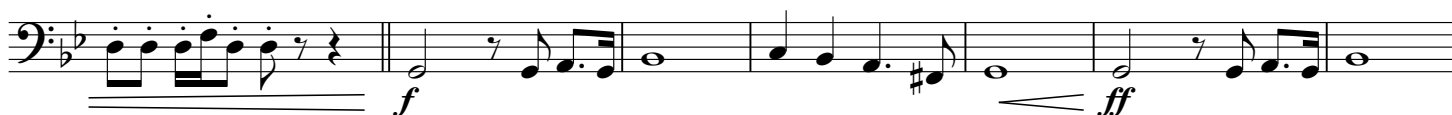
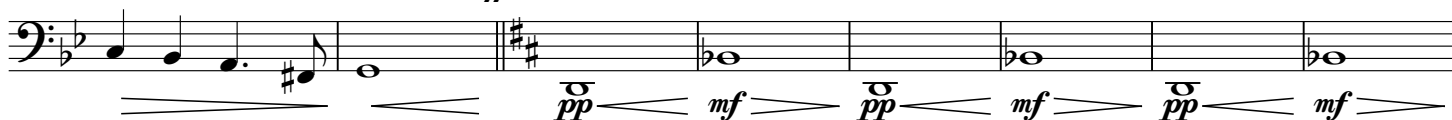
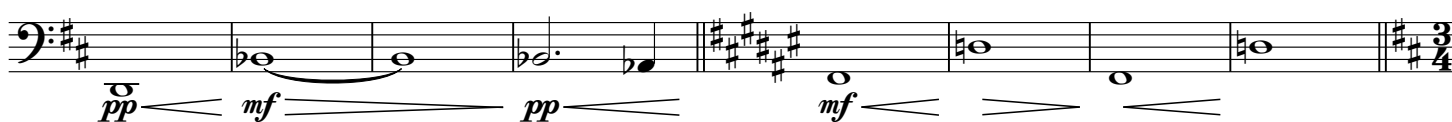
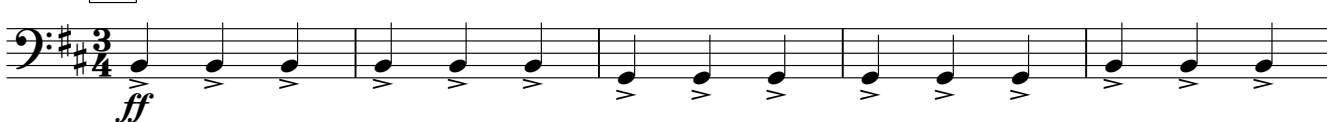
pp *mf* *pp* *mf* **L** *D.S. al Coda*

140 **M**

ff **M** 3/4

145

fff

103 **H**111 **I** ♩ = 80117 **J** **Meno mosso**
Pesante ♩ = 70124 **K**132 **L** **D.S. al Coda**140 **M**

145



Bateria
Glockenspiel

Para a Banda da EsPCEx

Suite Homen Aranha: De Volta Ao Lar

Comp. Michael Giacchino

Adap. SGT Christian Cunha (EB)
Contato: Christiantc.98@gmail.com

$\text{♩} = 70$

2

Grandioso

6

p f p

Fast

$\text{♩} = 140$

Toque Apenas na Primeira Vez

13

ff pp

17 **A**

Glockenspiel

14

B

Bateria

2

f

40

C

f p

4

49

f

53

mf *cresc. poco sempre* p mf

2 **2** **2**

61 **E**

2 **2** **2** **2**

69 **F** **Grandioso**

2 **2** **2** **2**

f

To Coda

77

ff

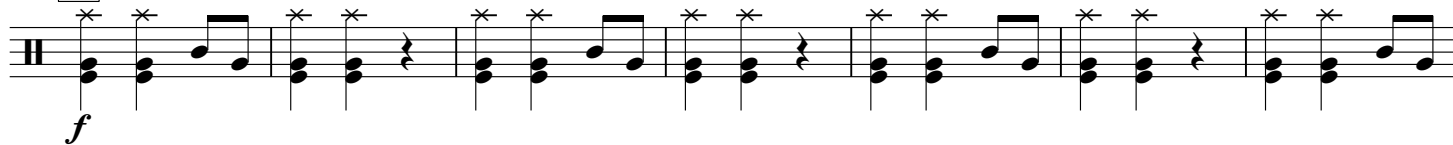
2 **2** **2**

Meno mosso

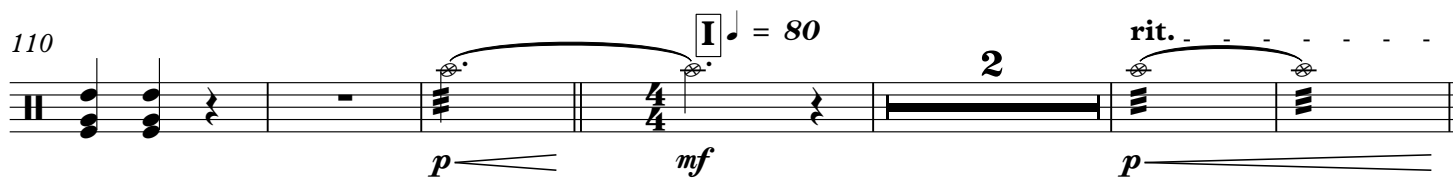
85 **G** $\text{♩} = 125$

6

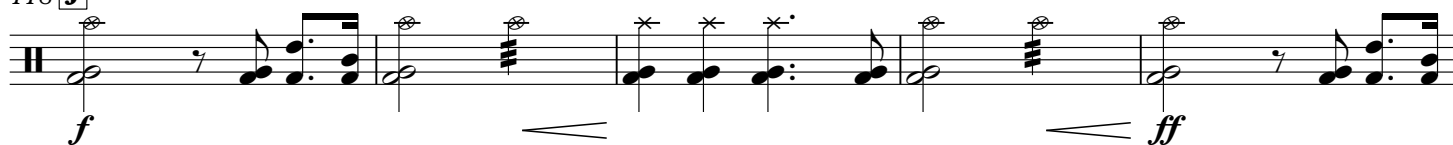
91

103 **H**

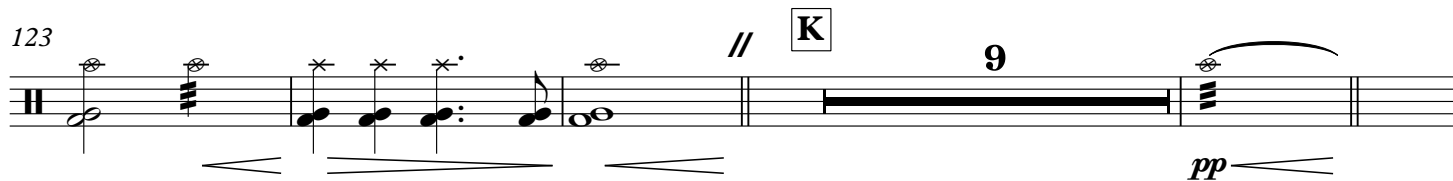
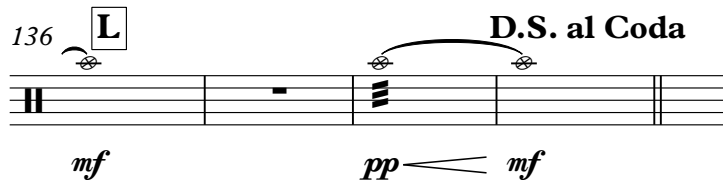
110



Meno mosso
118 **J** Pesante ♩ = 70



123

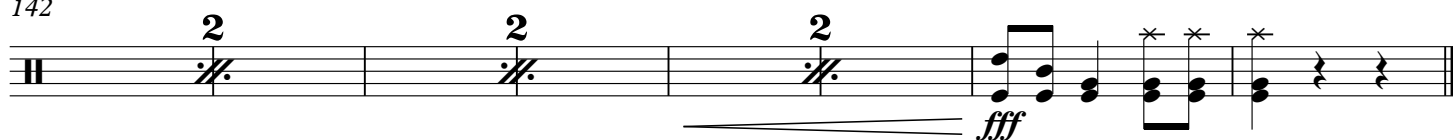
136 **L**

D.S. al Coda

M



142



Suite Homen Aranha: De Volta Ao Lar

Comp. Michael Giacchino

Adap. SGT Christian Cunha (EB)
Contato: Christiantc.98@gmail.com $\text{♩} = 70$ **Grandioso**

9

**Fast** $\text{♩} = 140$

Toque Apenas na Primeira Vez

3



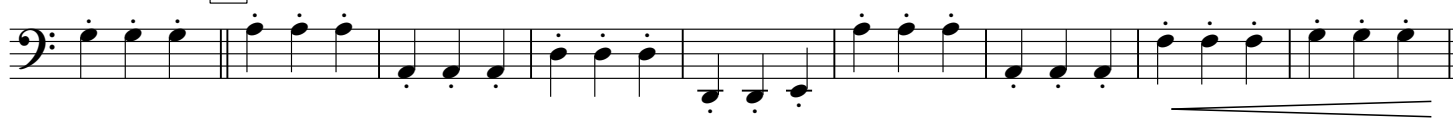
17

A

16

B

40

C

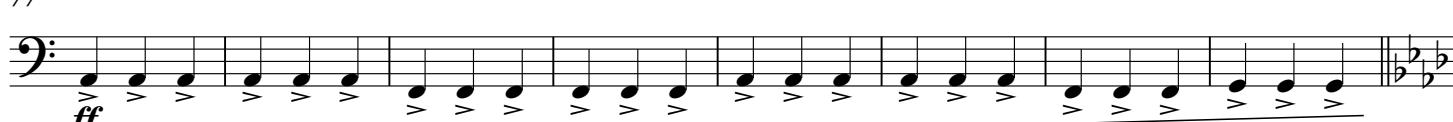
49

D

61

E69 **F** **Grandioso****To Coda**

77

**Meno mosso**85 **G** $\text{♩} = 125$
6

101

H

107



113 **I** ♩ = 80 rit.

p

118 **J** **Meno mosso** **Pesante** ♩ = 70 //

K *f* *ff*

126 Tuba ou Bass Tb. (Tacet) Play

pp *mf* *pp* *mf* *pp* *mf* *pp* *mf* *pp*

136 **L** **D.S. al Coda** **M**

mf *ff*

143

fff