

Toquinho e Vinícius arr.Sgt Paulo

Aquarela

Aquarela

Toquinho e Vinícius
arr.Sgt Paulo

arr. Sgt Paul

Flauta
Clarinete 1
Clarinete 2
Clarinete 3
1º Alto
3º Alto
2º Tenor
4º Tenor
Sax Barítono
mp

Trompa 1
Trompa 2
Trompa 3
Trompete 1
Trompete 2
Trompete 3
Trombone 1
Trombone 2
Trombone 3
Trombone 4
Bombardino Sib
Tuba Sib
Tuba Mib
Timpano
Prato Suspenso
Bateria
f
cresc.
Pratos

Piano
mp
F *Fmaj7/A* *Bb* *Gm/C* *F* *Fmaj7/A* *Bb* *Gm/C*
cresc.
f

Baixo de Cordas
mp

J = 80

[illegible]

[illegible]

46

Fl.

Cl.1

Cl.2

Cl.3

1° Alt.

3° Alt.

2° Tn.

4° Tn.

Sx Bar.

Trpa.1

Trpa.2

Trpa.3

Tpt.1

Tpt.2

Tpt.3

Tbn.1

Tbn.2

Tbn.3

Tbn.4

Bdno.

Tb.Bb

Tb.Eb

Timp.

Prt.Susp.

Dr.

Pno.

Bx.C.

B \flat

B \flat /C

F

F \sharp maj \flat /A

B \flat

2

51. 1. 2. rall.

Fl.

Cl.1

Cl.2

Cl.3

1° Alt.

3° Alt.

2° Tn.

4° Tn.

Sx Bar.

Trpa.1

Trpa.2

Trpa.3

Tpt.1

Tpt.2

Tpt.3

Tbn.1

Tbn.2

Tbn.3

Tbn.4

Bdno.

Tb.Bb

Tb.Eb

Timp.

Prt.Susp.

Dr.

Pno.

Bx.C.

cresc.

rall.

Aquarela

Toquinho e Vinícius
arr. Sgt Paulo

$\text{♩} = 80$

mp

6 *mp*

12 *mp*

19 *sfz* A

26 *cresc.* 6 *f*

33 *To Coda* 1. 2.

42 *D.C. al Coda* *f* *Coda* *mp*

48 *rall.* 1. 2.

Aquarela

Toquinho e Vinícius
arr. Sgt Paulo

$\text{♩} = 80$

mp

7 *mp*

14 1. 2. *mp*

20 *sfz* A

26 *cresc.* 6 *f*

32 1. 2. To Coda ϕ

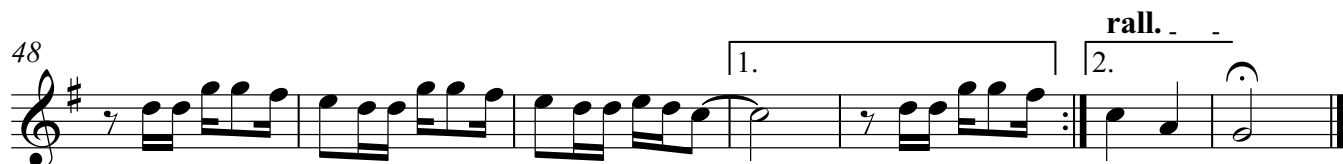
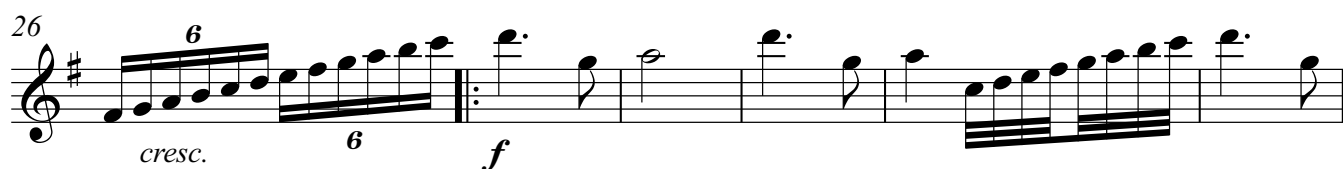
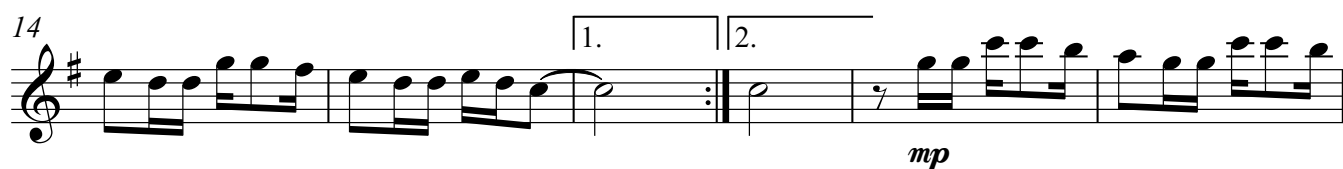
42 D.C. al Coda Coda ϕ *f* *mp*

48 1. 2. *rall.*

Aquarela

Toquinho e Vinícius
arr. Sgt Paulo

♩ = 80



Aquarela

Toquinho e Vinícius
arr.Sgt Paulo

♩ = 80

11

Musical notation for measures 11 and 12. Measure 11 contains a melodic line starting on G4, moving up stepwise to A4, B4, and C5, then down to B4, A4, and G4. Measure 12 contains a melodic line starting on G4, moving up stepwise to A4, B4, and C5, then down to B4, A4, and G4. The notation includes a treble clef, a key signature of one sharp (F#), and a common time signature (C). The melody is written on a single staff. The first ending is marked with a bracket and the number 1, and the second ending is marked with a bracket and the number 2. The first ending leads back to the beginning of the piece, and the second ending leads to the final measure. The dynamics are marked *mp* (mezzo-piano) at the end of the first ending.

19

sfz

A

26


cresc. **f**

32 To Coda



42 **D.C. al Coda** **Coda** ϕ

f *mp*

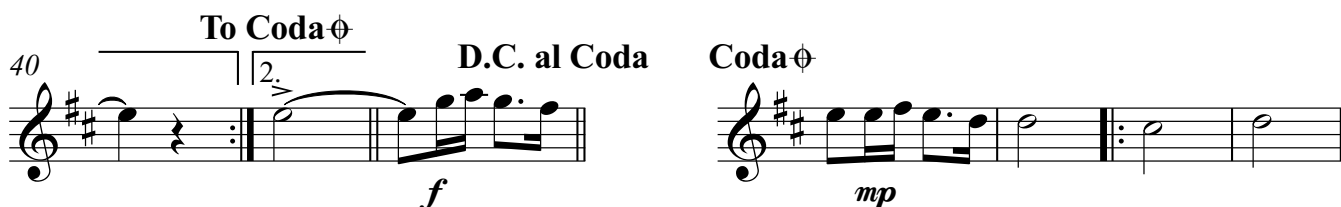
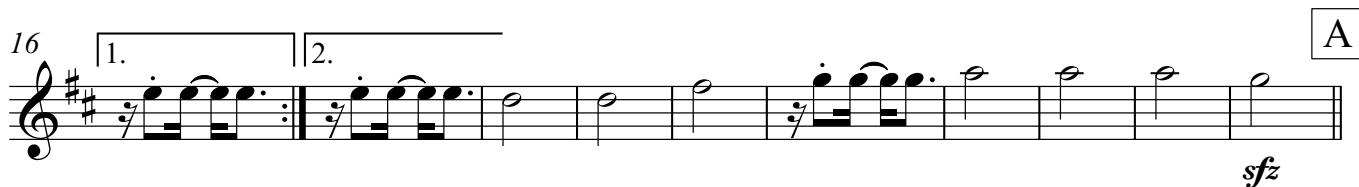
48 

1º Alto

Aquarela

Toquinho e Vinícius
arr. Sgt Paulo

♩ = 80

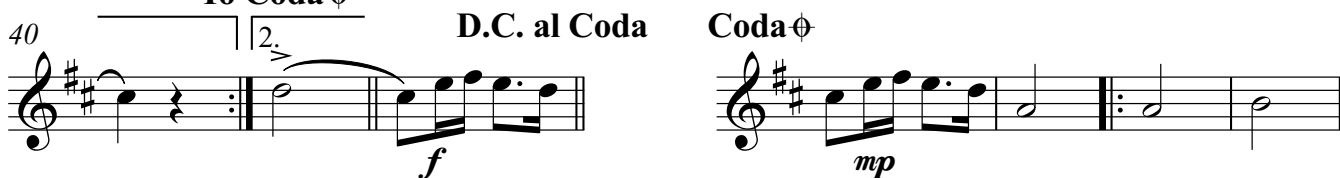
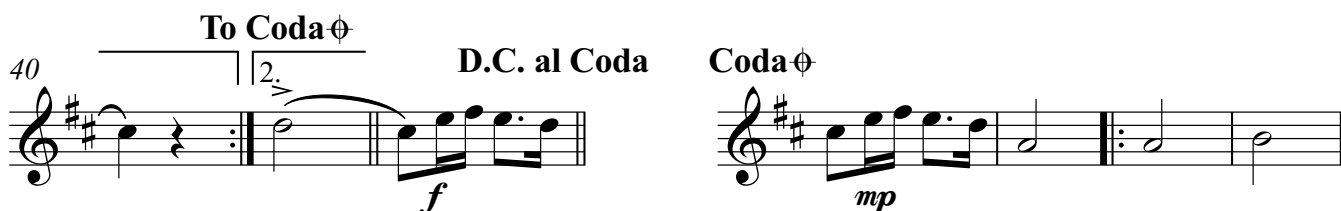


3º Alto

Aquarela

Toquinho e Vinícius
arr. Sgt Paulo

♩ = 80

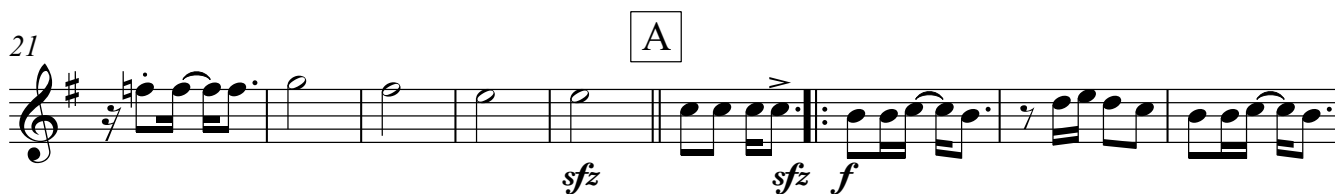
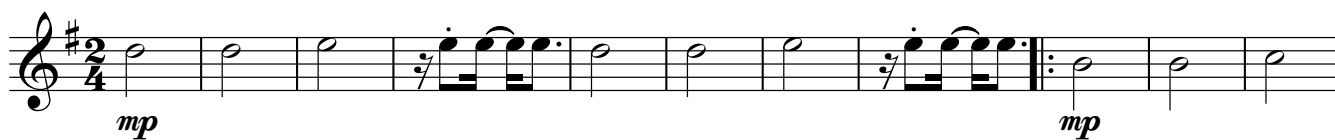


2º Tenor

Aquarela

Toquinho e Vinícius
arr. Sgt Paulo

♩ = 80

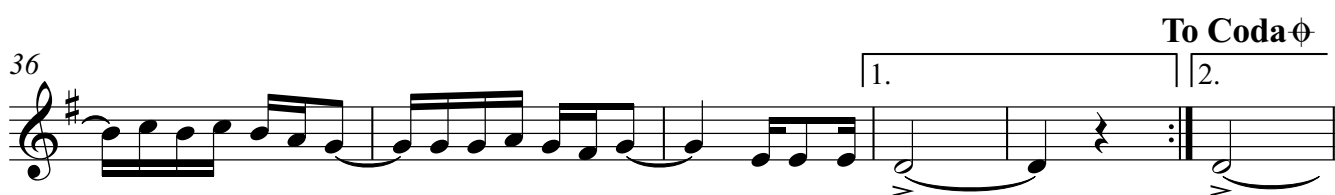
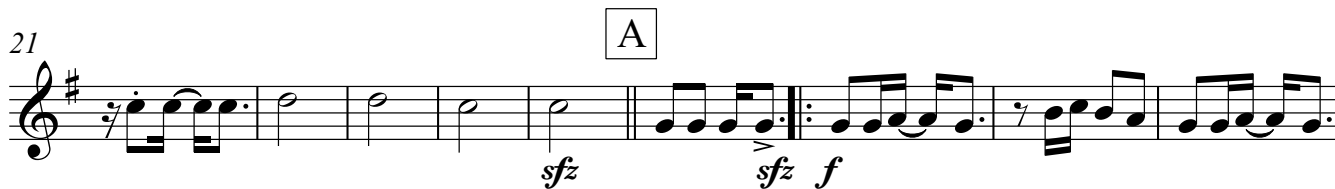


4º Tenor

Aquarela

Toquinho e Vinícius
arr. Sgt Paulo

♩ = 80



Aquarela

Toquinho e Vinícius
arr. Sgt Paulo

$\text{♩} = 80$
4

mp *mp*

13 1. 2.

22 A *sfz* *sfz* *f* To Coda ϕ 1. 2.

32 1. 2.

42 D.C. al Coda Coda ϕ *mp*

47 1. 2. *rall.*

Trompa 1

Aquarela

Toquinho e Vinícius
arr. Sgt Paulo

$\text{♩} = 80$
4

14 1. 2. *mp*

24 A *f* To Coda ϕ 1. 2.

35 *f*

42 D.C. al Coda Coda ϕ

48 1. 2. *rall.*

Trompa 2

Aquarela

Toquinho e Vinícius
arr. Sgt Paulo

$\text{♩} = 80$
4

f *f* *p* *mp*

14 1. 2. *mp*

24 **A** *f* **To Coda** ϕ

35 1. 2. *f*

42 **D.C. al Coda** **Coda** ϕ

48 1. 2. **rall.**

Aquarela

Toquinho e Vinícius
arr.Sgt Paulo

$\text{♩} = 80$
4

14 1. 2. *mp*

24 A *f* To Coda ϕ 1. 2.

35 *f*

42 D.C. al Coda Coda ϕ

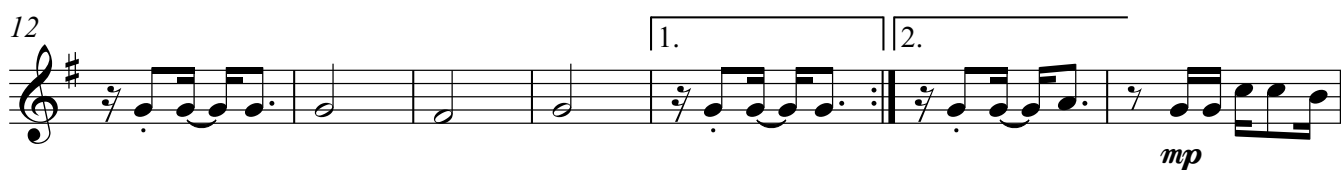
48 1. 2. *rall.*

Trompete 1

Aquarela

Toquinho e Vinícius
arr. Sgt Paulo

♩ = 80

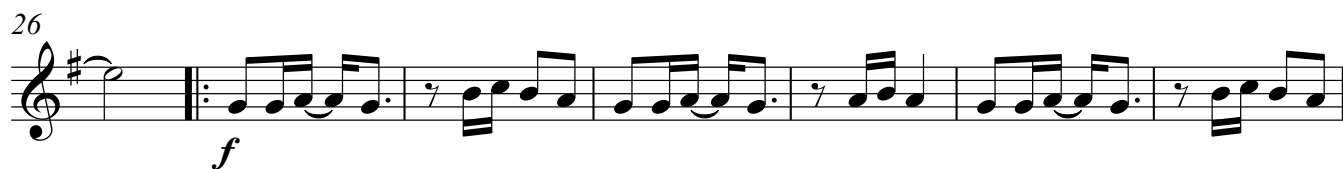
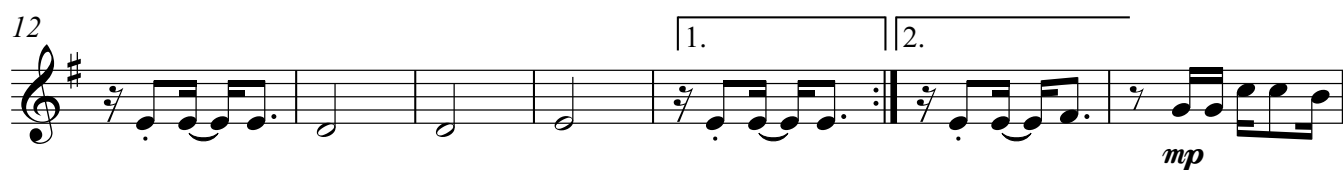


Trompete 2

Aquarela

Toquinho e Vinícius
arr. Sgt Paulo

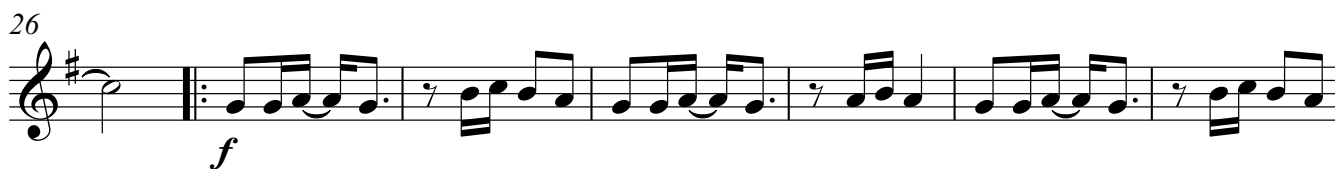
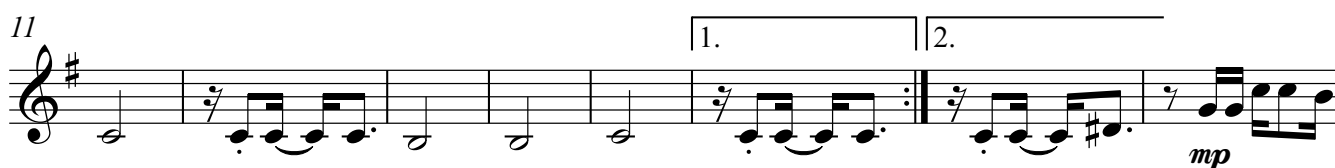
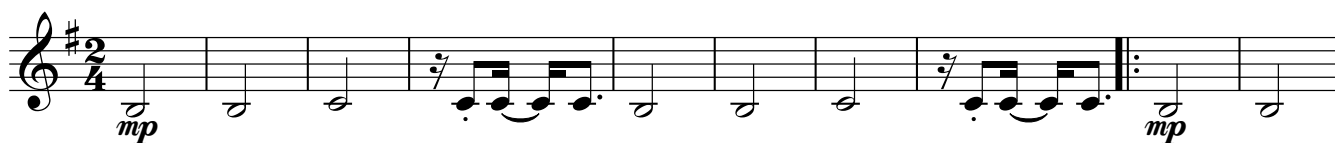
♩ = 80



Aquarela

Toquinho e Vinícius
arr. Sgt Paulo

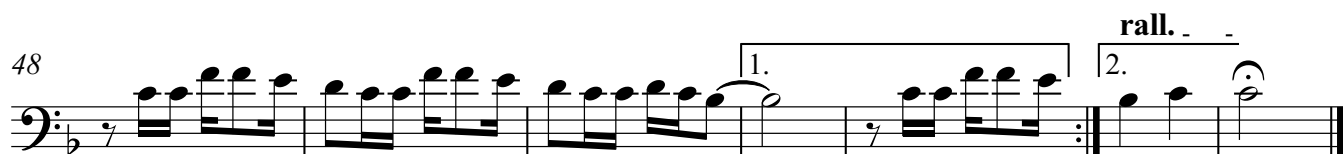
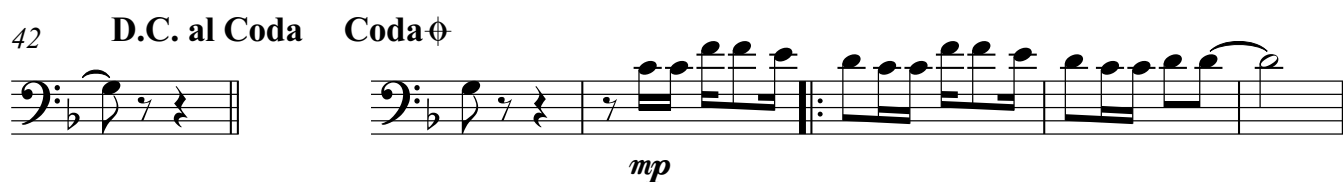
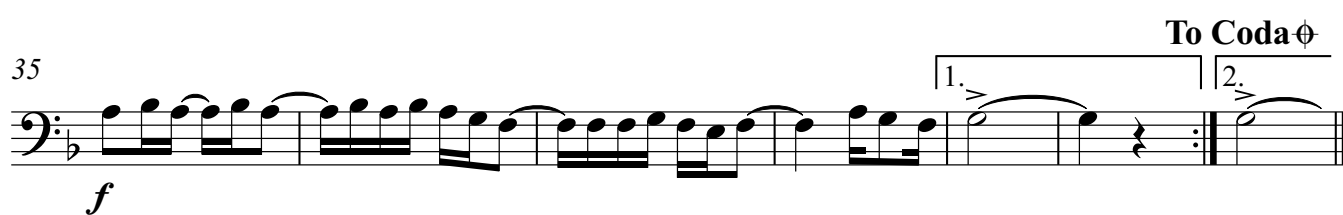
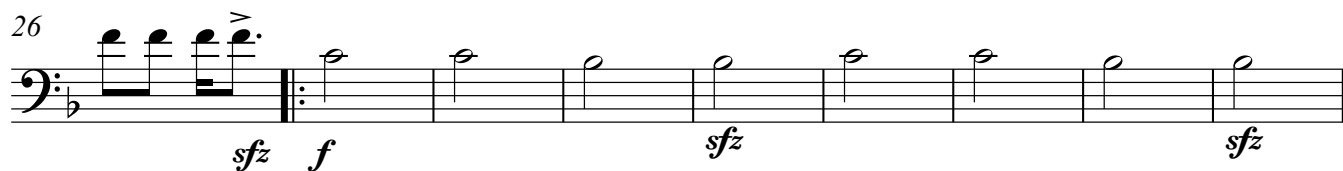
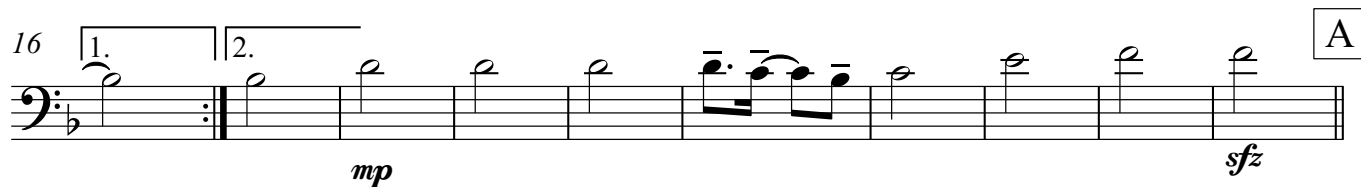
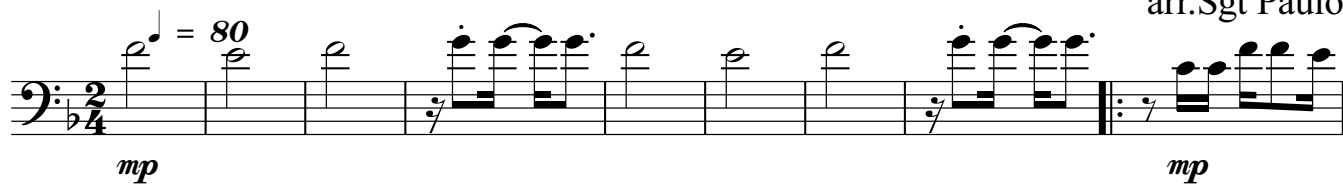
♩ = 80



Trombone 1

Aquarela

Toquinho e Vinícius
arr. Sgt Paulo



Trombone 2

Aquarela

Toquinho e Vinícius
arr. Sgt Paulo

$\text{♩} = 80$

mp *mp*

10

mp

16

mp *sfz* A

26

sfz *f* *sfz* *sfz*

35

f To Coda ϕ

42 D.C. al Coda Coda ϕ

mp

48

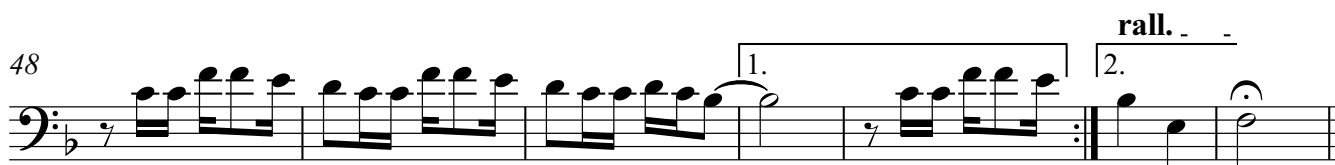
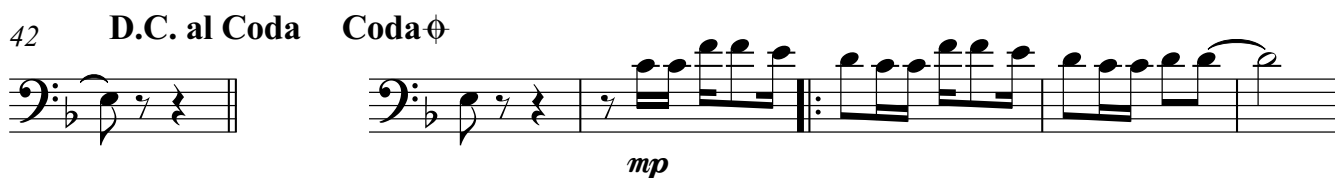
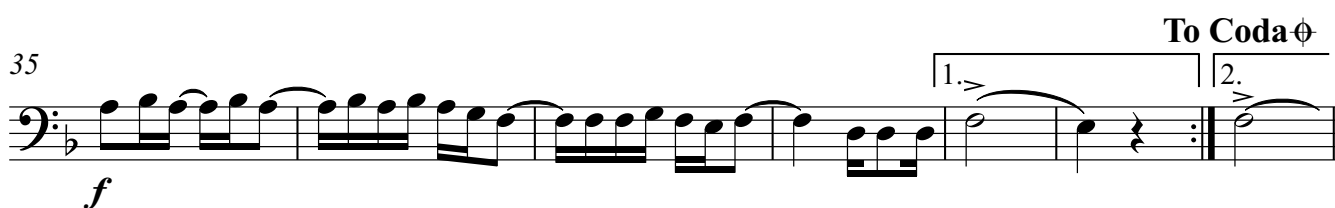
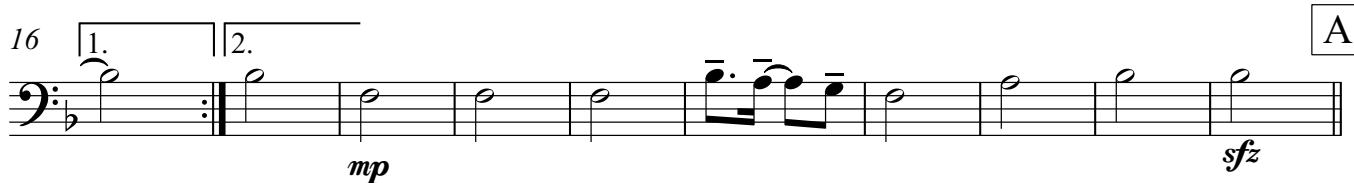
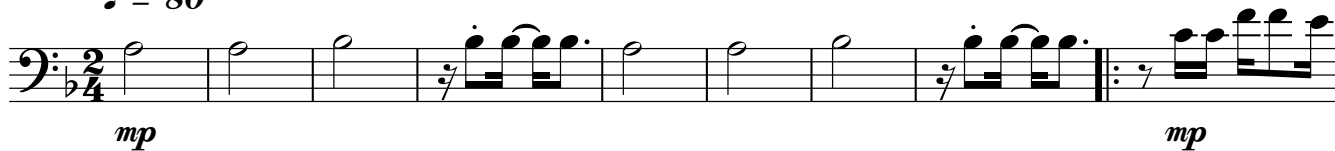
rall. ϕ

Trombone 3

Aquarela

Toquinho e Vinícius
arr. Sgt Paulo

♩ = 80

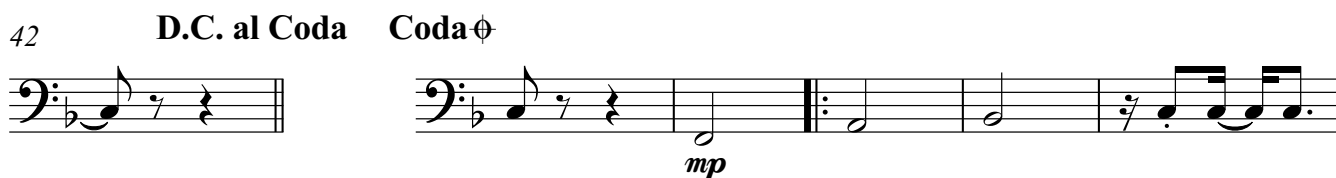


Trombone 4

Aquarela

Toquinho e Vinícius
arr. Sgt Paulo

♩ = 80



Aquarela

Toquinho e Vinícius
arr. Sgt Paulo

$\text{♩} = 80$ **4**

Aquarela

Toquinho e Vinícius
arr. Sgt Paulo

$\text{♩} = 80$
4

mp *mp*

13 1. 2.

23 A

sfz *sfz* *f*

32 1. 2. To Coda ϕ

42 D.C. al Coda Coda ϕ

mp

48 1. 2. rall. - - -

Aquarela

Toquinho e Vinícius
arr.Sgt Paulo

$\text{♩} = 80$
4

mp *mp*

13 1. 2.

22 **A** *sfz* *sfz* *f* **To Coda** ϕ

32 1. 2.

42 **D.C. al Coda** **Coda** ϕ *mp*

48 1. 2. **rall.**

Timpano

Aquarela

Toquinho e Vinícius
arr.Sgt Paulo

♩ = 80
 C To F
 3 2 6 1.
 17 8 2 7 1.
 40 2. To Coda
 D.C. al Coda Coda
 44 6 2 2. rall.
 cresc. f cresc. f cresc. f cresc.

Aquarela

Toquinho e Vinícius
arr. Sgt Paulo

A

♩ = 80
3

cresc.

3 7 1. 8

26

p < *f*

cresc. *f*

cresc. *f* *rall.* *cresc.*

42 D.C. al Coda Coda

f *f*

6 2 1. 2. rall.

To Coda

Bateria

Aquarela

Toquinho e Vinícius

arr. Sgt Paulo

$\text{♩} = 80$
3

Pratos

f

2

11

2

1.

17

2.

2

2

2

A

27

2

2

2

35

2

2

1.

To Coda ϕ

2.

42

> D.C. al Coda Coda ϕ >

mp

47

2

51

1.

2.

rall.

Piano

Aquarela

Toquinho e Vinícius

arr. Sgt Paulo

♩ = 80

F Fmaj7/A B \flat Gm/C F Fmaj7/A B \flat Gm/C F Fmaj7/A B \flat

mp *cresc.* *f* *mp*

12 Gm/C F F/A B \flat Gm/C Gm/C C \sharp Dm Dm/C B \flat maj7

A

21 E \flat F Fmaj7/A B \flat B \flat /C B \flat /C B \flat /C F(add9) C/E B \flat /D C \flat

sfz

31 F(add9) C/E B \flat /D C \flat F A \flat Dm Dm/C G \flat /B

1. 39 C7(sus4) C/G G \flat 7/1 C \flat 7(sus4) C D.C. al Coda Coda C F Fmaj7/A

mp *fall.*

46 B \flat B \flat /C F Fmaj7/A B \flat 1. B \flat /C F 2. B \flat /C F

Aquarela

Toquinho e Vinícius
arr. Sgt Paulo

$\text{♩} = 80$
4

mp *mp*

13

22

A

sfz *f* **To Coda**

32

42 **D.C. al Coda** **Coda**

mp

48

rall.