

Pout-Porri Forró do Bom

Arr: Daniel Nunes.

2° TROMBONE C

1

mf

To Coda

mp

f

mp

D.S. al Coda

2.

mp

⊕ Coda

f

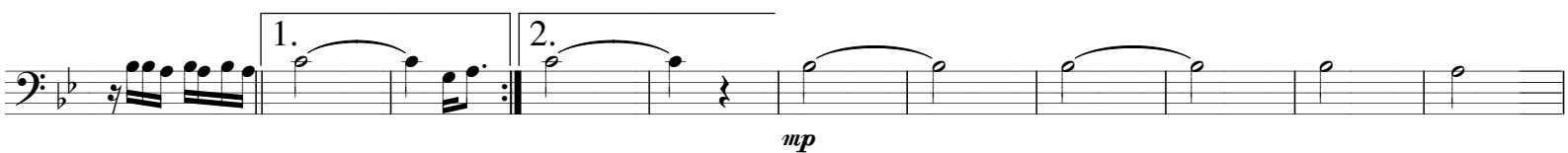
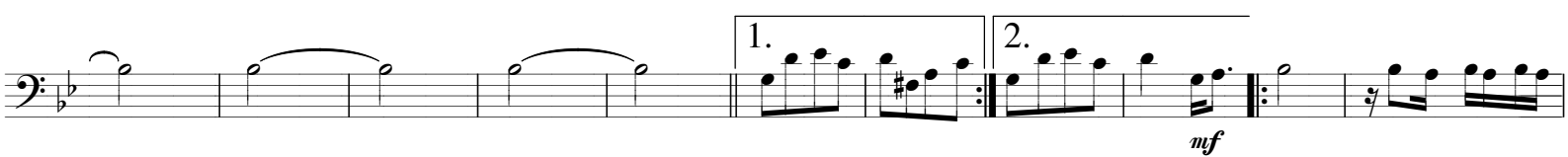
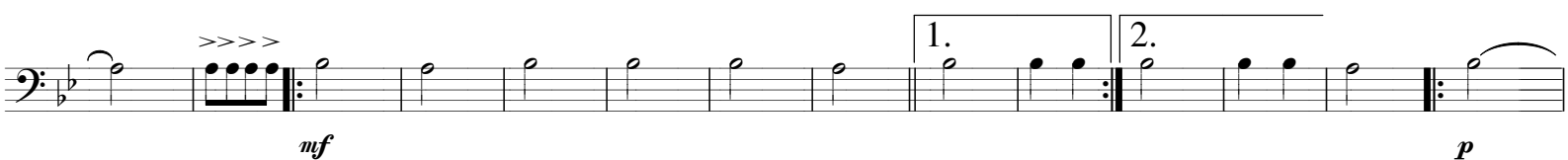
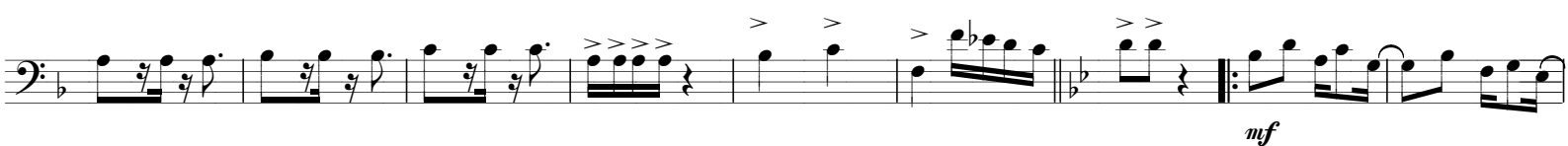
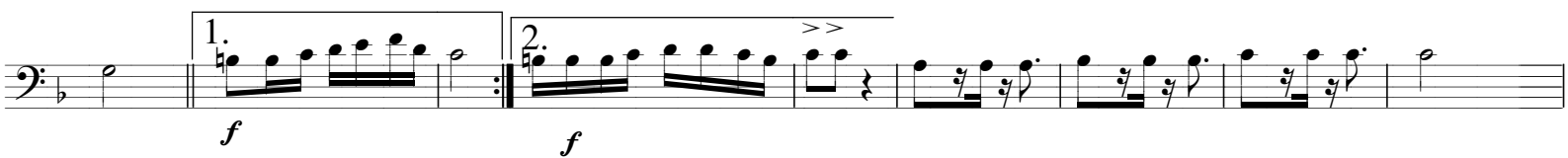
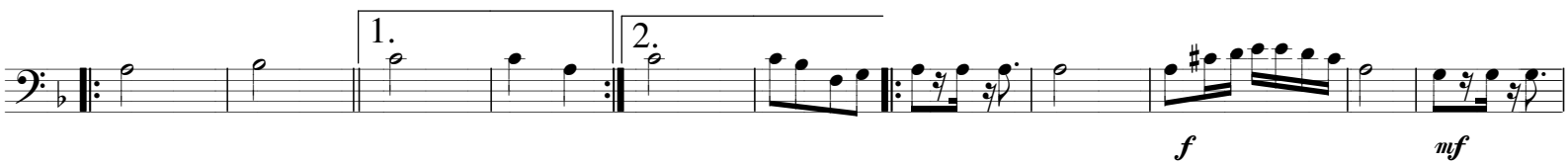
f

1.

2.

1.

2.



Sheet music for a single melodic line in bass clef, featuring various musical notations and dynamics.

The music is written in a single system with 12 staves. The key signature is one flat (B-flat), and the time signature is 4/4.

Key features include:

- Dynamics:** *f* (forte), *mp* (mezzo-piano), *mf* (mezzo-forte), and *fff* (fortissimo).
- Articulation:** Accents (>) and slurs are used throughout.
- Repetition:** First and second endings are marked with "1." and "2." above the staff.
- Phrasing:** The music is divided into measures by vertical bar lines, with some measures containing repeat signs.

