

TEM CHEGANDO O NATAL

ALINE BARROS

Arr. SAMUEL GOIS

A $\text{♩} = 100$

Flauta

1-Clarinete em Si \flat

2-Clarinete em Si \flat

3-Clarinete em Si \flat

Saxofone soprano

1-Saxofone alto

2-Saxofone alto

3-Saxofone alto

1-Saxofone tenor

2-Saxofone tenor

3-Saxofone tenor

Saxofone baritono

1-Trompa em F \acute{a}

2-Trompa em F \acute{a}

3-Trompa em F \acute{a}

1-Trompeta em Si \flat

2-Trompeta em Si \flat

3-Trompeta em Si \flat

1-Trombone

2-Trombone

3-Trombone

Trombone baixo

1-Eufônio

2-Eufônio

3-Eufônio

Sousafone em Si \flat

Bateria

A $\text{♩} = 100$

Baixo de cordas

7

Fl.

Cl.

Cl.

Cl.

Sax. sop.

Sax. al.

Sax. al.

Sax. al.

Sax. ten.

Sax. ten.

Sax. ten.

Sax. bar.

Tr.

Tr.

Tr.

Tpte.

Tpte.

Tpte.

Trne.

Trne.

Trne.

Trne. b.

Euf.

Euf.

Euf.

Sousa.

Bat.

Baixo sint.

1.

1.

B

B

16 2.

Fl.

Cl.

Cl.

Cl.

Sax. sop.

Sax. al.

Sax. al.

Sax. al.

Sax. ten.

Sax. ten.

Sax. ten.

Sax. bar.

Tr.

Tr.

Tr.

Tpte.

Tpte.

Tpte.

Trne.

Trne.

Trne.

Trne. b.

Euf.

Euf.

Euf.

Sousa.

Bat.

Baixo sint.

C

Fl.

Cl.

Cl.

Cl.

Sax. sop.

Sax. al.

Sax. al.

Sax. al.

Sax. ten.

Sax. ten.

Sax. ten.

Sax. bar.

Tr.

Tr.

Tr.

Tpte.

Tpte.

Tpte.

Trne.

Trne.

Trne.

Trne. b.

Euf.

Euf.

Euf.

Sousa.

Bat.

Baixo sint.

D

[illegible]

40

Cl.
Cl.
Cl.
Sax. al.
Sax. ten.
Sax. ten.
Sax. ten.
Sax. bar.
Tr.
Tr.
Tr.
Tpte.
Tpte.
Tpte.
Trne.
Trne.
Trne.
Trne. b.
Euf.
Euf.
Euf.
Sousa.
Bat.
Baixo sint.

48

Fl.

Cl.

Cl.

Cl.

Sax. sop.

Sax. al. *tr*

Sax. al.

Sax. al.

Sax. ten.

Sax. ten.

Sax. ten.

Sax. bar.

Tr.

Tr.

Tr.

Tpte.

Tpte.

Tpte.

Trne.

Trne.

Trne.

Trne. b.

Euf.

Euf.

Euf.

Sousa.

Bat.

Baixo sint.

56 **G**

Fl.

Cl.

Cl.

Cl.

Sax. sop.

Sax. al.

Sax. al.

Sax. al.

Sax. ten.

Sax. ten.

Sax. ten.

Sax. bar.

Tr.

Tr.

Tr.

Tpte.

Tpte.

Tpte.

Trne.

Trne.

Trne.

Trne. b.

Euf.

Euf.

Euf.

Sousa.

Bat.

Baixo sint.

G

64 **H**

Fl.

Cl.

Cl.

Cl.

Sax. sop.

Sax. al.

Sax. al.

Sax. al.

Sax. ten.

Sax. ten.

Sax. ten.

Sax. bar.

Tr.

Tr.

Tr.

Tpte.

Tpte.

Tpte.

Trne.

Trne.

Trne.

Trne. b.

Euf.

Euf.

Euf.

Sousa.

Bat.

H

Baixo sint.

VEM CHEGANDO O NATAL

Flauta

ALINE BARROS

Arr. SAMUEL GOIS

A ♩ = 100

5 *p*

11 **B**

17 **C**

24

29 **D**

34

38 **E** 9 **F** 2

54 **G**

60

65 **H**

69

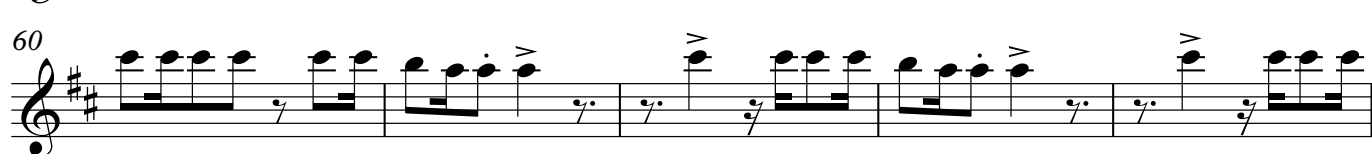
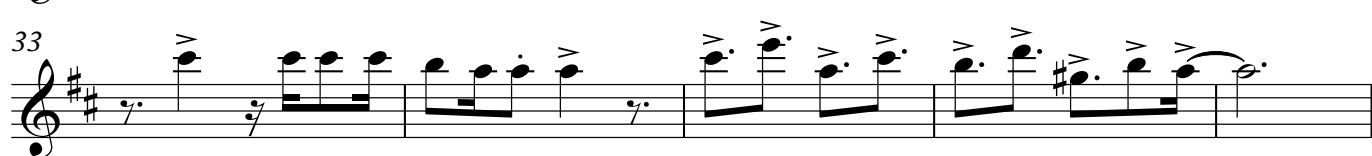
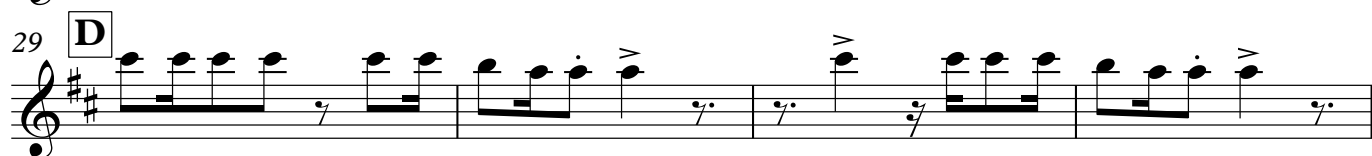
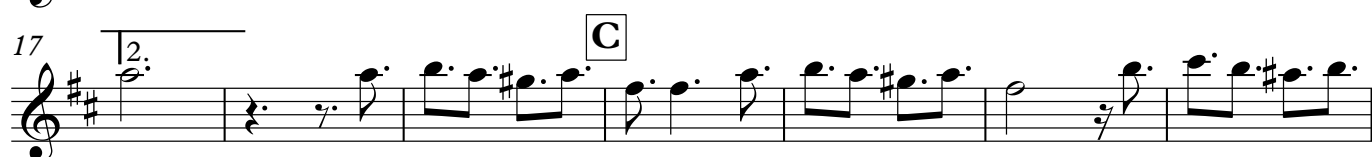
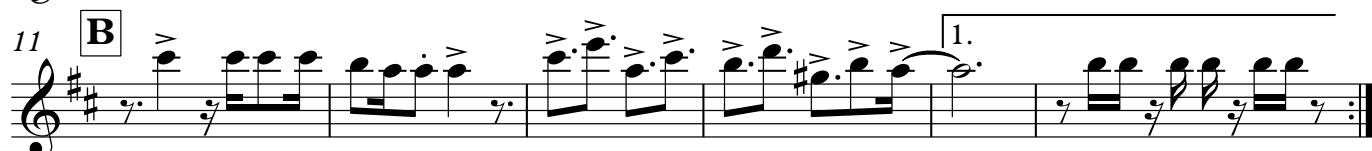
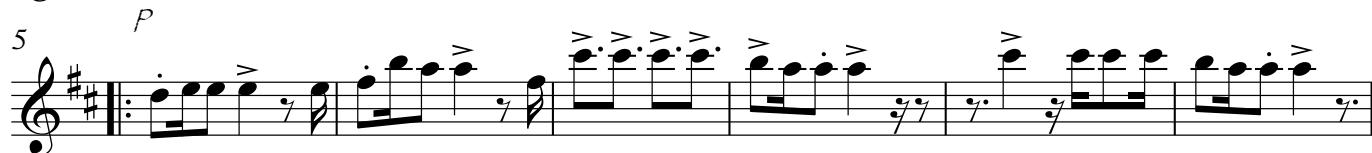
VEM CHEGANDO O NATAL

1-Clarinete em Sib

ALINE BARROS

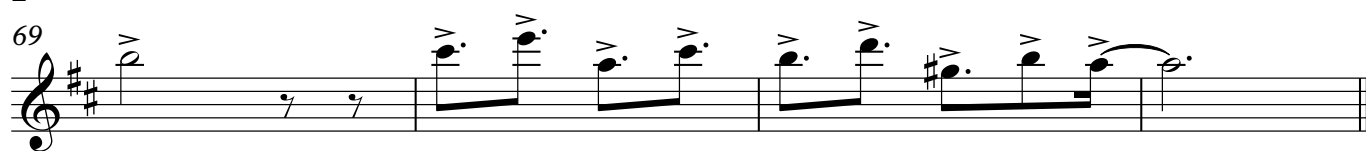
Arr. SAMUEL GOIS

A ♩ = 100



2

69



VEM CHEGANDO O NATAL

2-Clarinete em Sib

ALINE BARROS

Arr. SAMUEL GOIS

A ♩ = 100

5 *p*

11 **B**

17 **C**

24

29 **D**

33

38 **E**

47 **F** *pp*

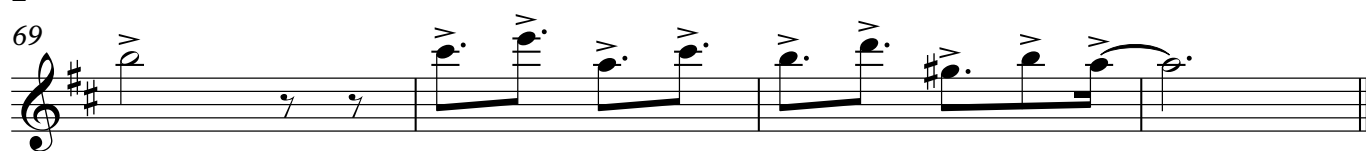
55 **G**

60

65 **H**

2

69



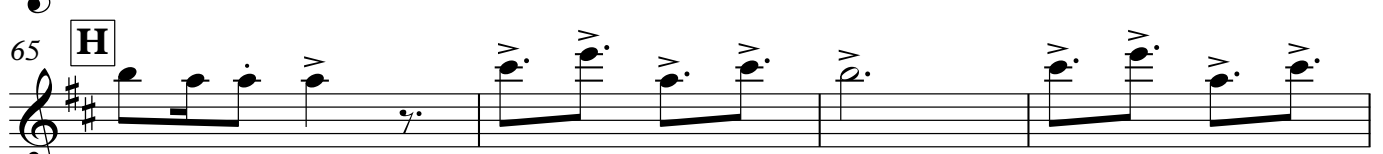
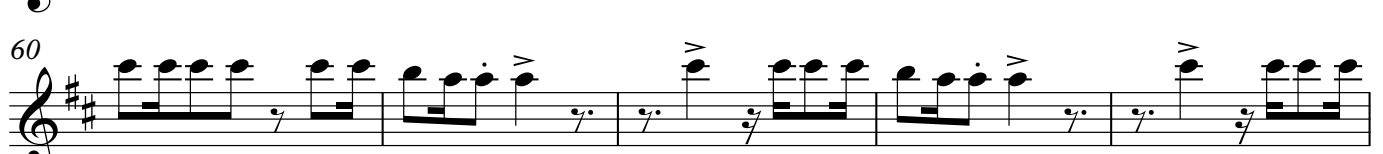
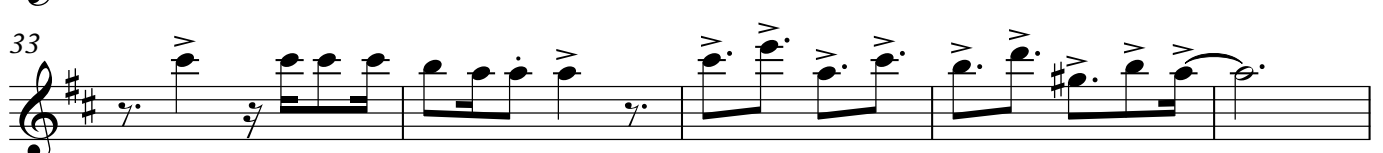
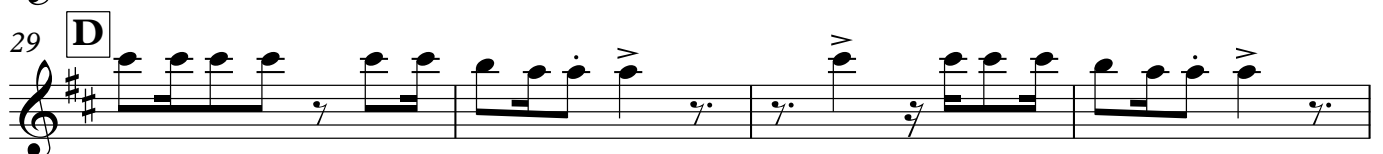
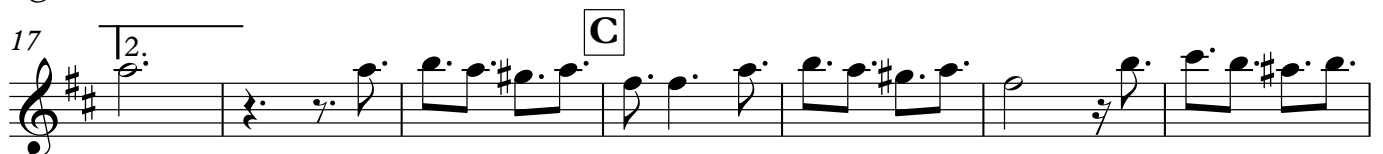
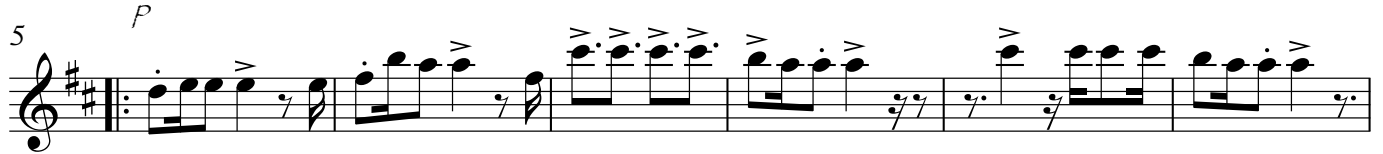
VEM CHEGANDO O NATAL

3-Clarinete em Sib

ALINE BARROS

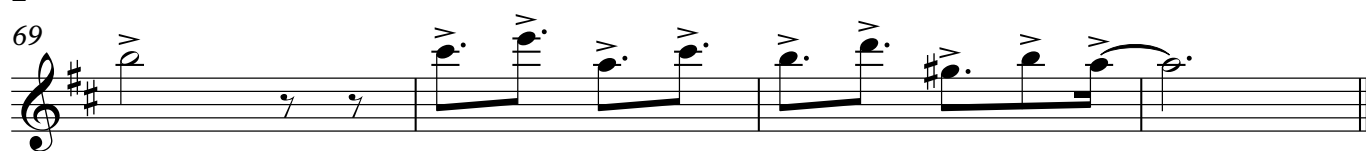
Arr. SAMUEL GOIS

A ♩ = 100



2

69



VEM CHEGANDO O NATAL

Saxofone soprano

ALINE BARROS

Arr. SAMUEL GOIS

A ♩ = 100

5 *p*

11 **B**

17 **C**

24

29 **D**

33

38 **E** **F**

54 **G**

60

65 **H**

69

VEM CHEGANDO O NATAL

1-Saxofone alto

ALINE BARROS

Arr. SAMUEL GOIS

A $\text{♩} = 100$

4 *p*

9 **B**

14 1. 2.

20 **C**

24

29 **D**

35 **E** SOLO *ff*

41

46 **F** *tr*

51

56 **G**

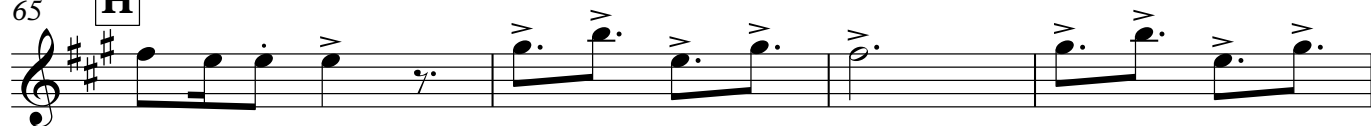
2

60



65

H



69



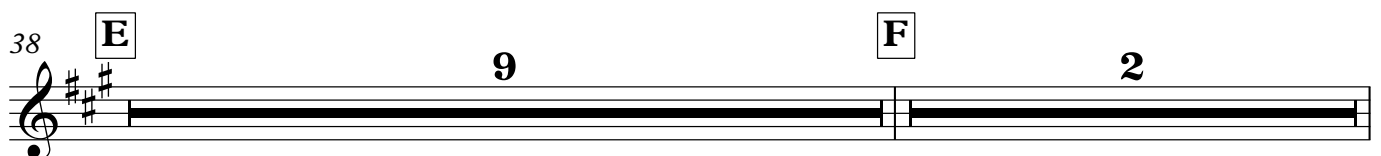
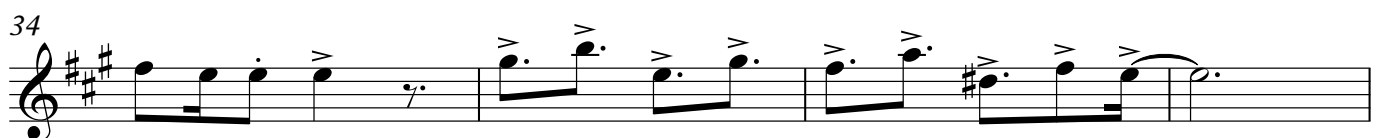
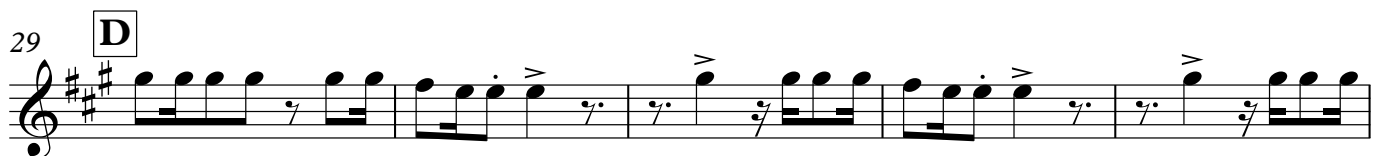
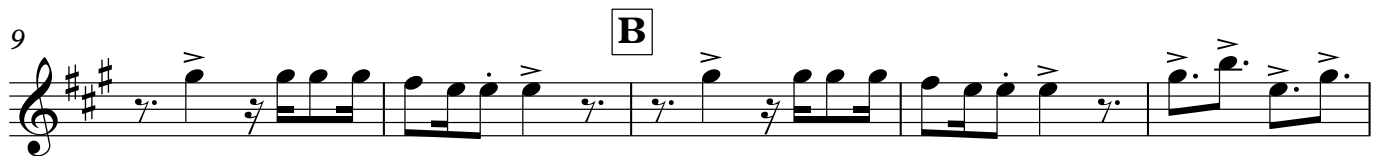
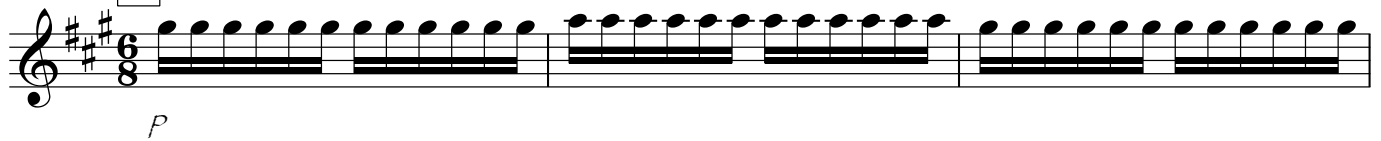
VEM CHEGANDO O NATAL

2-Saxofone alto

ALINE BARROS

Arr. SAMUEL GOIS

A ♩ = 100



2

49



55

G



60



65

H



69



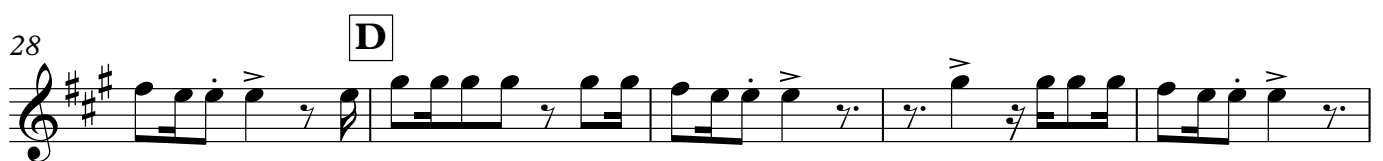
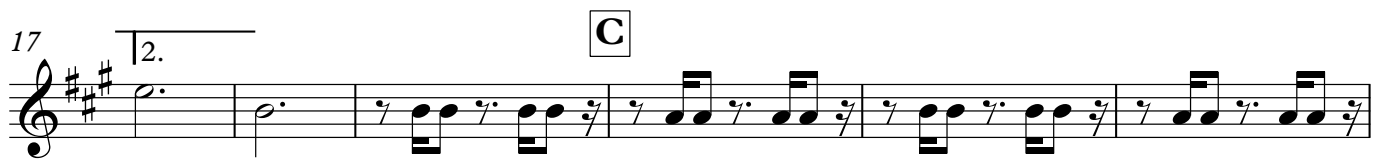
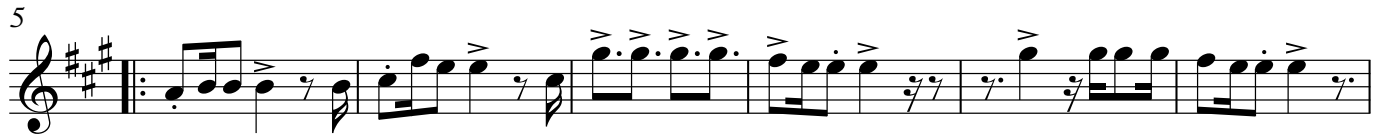
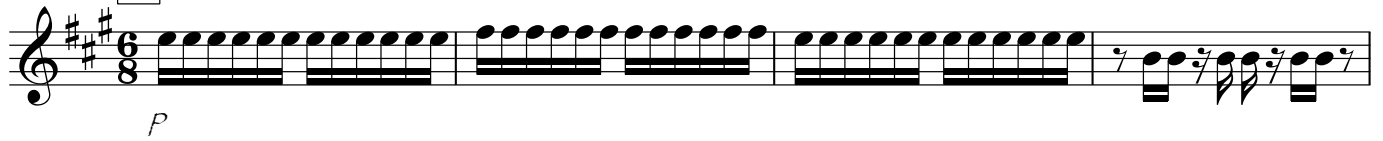
VEM CHEGANDO O NATAL

3-Saxofone alto

ALINE BARROS

Arr. SAMUEL GOIS

A ♩ = 100



2

49



G

55



60



H

65



69



VEM CHEGANDO O NATAL

1-Saxofone tenor

ALINE BARROS

Arr. SAMUEL GOIS

A ♩ = 100
4

9 **B**

16 **C**

23

29 **D**

34 **E**
pp

40

47 **F**

55 **G**

60

65 **H**

VEM CHEGANDO O NATAL

2-Saxofone tenor

ALINE BARROS

Arr. SAMUEL GOIS

A ♩ = 100
4

9 **B**

16 **C**

23

29 **D**

34 **E**
pp

40

47 **F**

55 **G**

60

65 **H**

VEM CHEGANDO O NATAL

3-Saxofone tenor

ALINE BARROS

Arr. SAMUEL GOIS

A ♩ = 100
4

9 **B**

16 **C**

23

29 **D**

34 **E**
pp

40

47 **F**

55 **G**

60

65 **H**

VEM CHEGANDO O NATAL

Saxofone barítono

ALINE BARROS

Arr. SAMUEL GOIS

A ♩ = 100

7 **B**

14 1. 2.

19 **C**

24

29 **D**

36 **E** *pp*

44 **F**

50

55 **G**

59

65 **H**

2

69



1-Trompa em Fá

Arr. SAMUEL GOIS

65 **H**



Musical notation for measure 65, starting with a treble clef and a sharp sign. The notation shows a sequence of notes: a half note G4, a quarter note A4, a quarter note B4, a half note C5, a quarter note B4, a quarter note A4, a half note G4, a quarter note F#4, a quarter note E4, and a half note D4.

2-Trompa em Fá

Arr. SAMUEL GOIS

65 **H**



3-Trompa em Fá

Arr. SAMUEL GOIS

A ♩ = 100



11 **B**

1. 2.

20 **C**



20 **C**

D4 E4 F#4 G4 A4 B4 C5 B4 A4 G4 F#4 E4 D4

[illegible]

38 **E**

pp

Detailed description: This image shows measure 38 of a musical score. It begins with a key signature change to E major, indicated by a sharp sign on the F line and the letter 'E' in a box. The measure contains a series of notes: a half note E4, a quarter note F#4, a half note G#4, a quarter note A4, a half note B4, a quarter note C#5, a half note D5, a quarter note E5, a half note F#5, a quarter note G#5, a half note A5, and a quarter note B5. The notes are written on a single staff with a treble clef. The dynamic marking 'pp' is written below the first note.

47 **F**



56 **G**

The musical notation for measure 56 begins with a treble clef and a key signature of one sharp (F#). A box containing the letter 'G' is placed above the staff, indicating the starting chord. The notation includes a dotted quarter note on G4, followed by an eighth rest and an eighth note on A4. This is followed by a dotted quarter note on B4, an eighth note on C5, and an eighth note on D5. The measure continues with a dotted half note on G4, a dotted half note on F#4, a dotted half note on E4, and a dotted half note on D4. The measure concludes with a dotted quarter note on C4, an eighth rest, and an eighth note on B3.

65 **H**



VEM CHEGANDO O NATAL

1-Trompete em Sib

ALINE BARROS

Arr. SAMUEL GOIS

A ♩ = 100



5



11

B



19

C



28

D



33



38

E



46

F



56

G



61



65

H



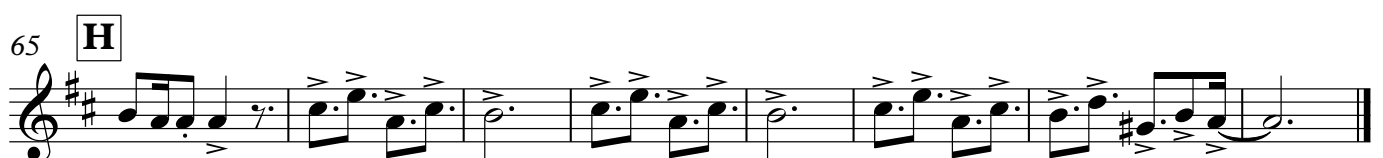
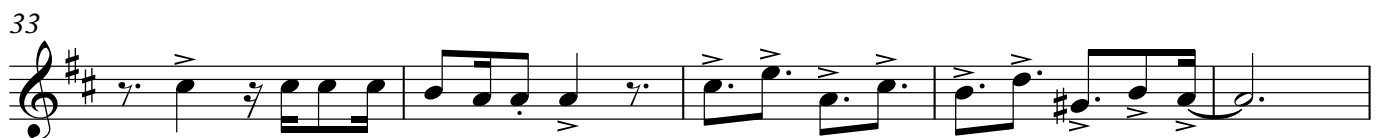
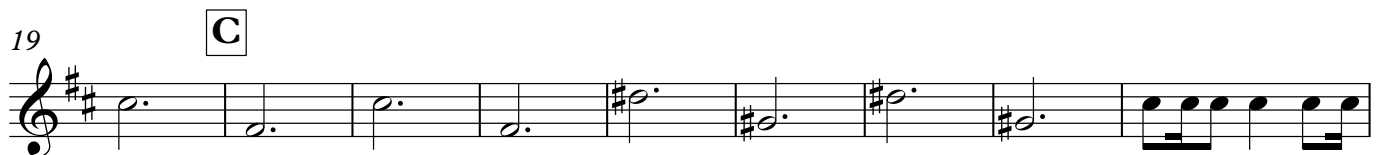
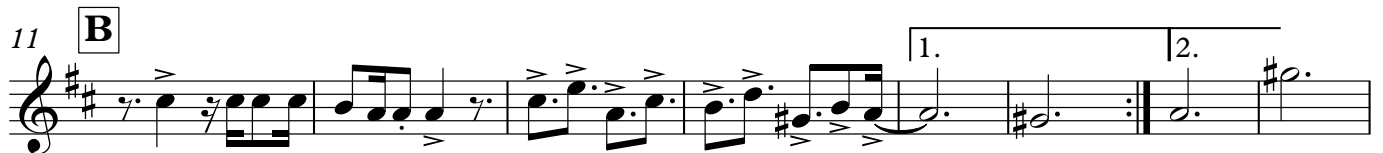
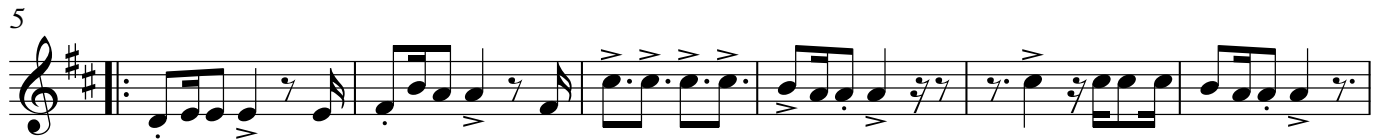
VEM CHEGANDO O NATAL

2-Trompete em Sib

ALINE BARROS

Arr. SAMUEL GOIS

A ♩ = 100



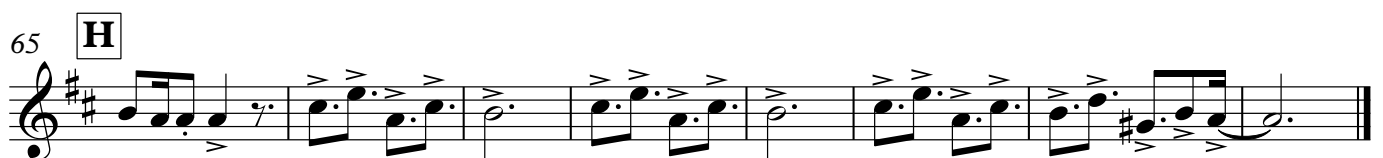
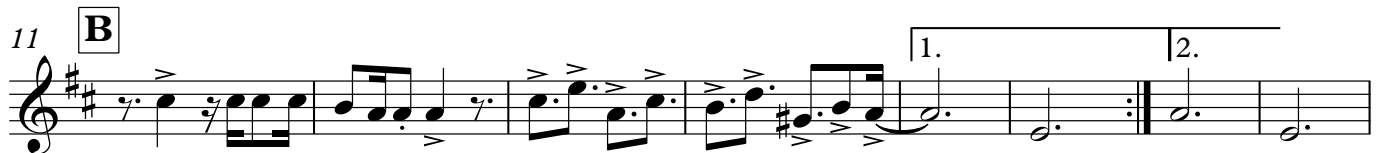
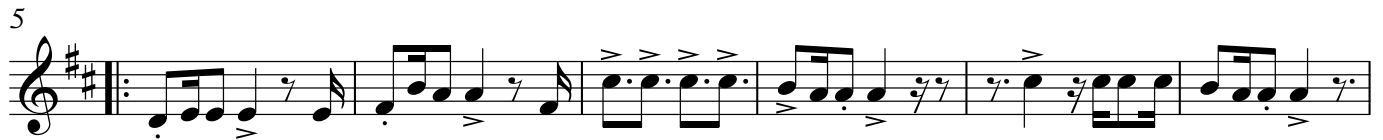
VEM CHEGANDO O NATAL

3-Trompete em Sib

ALINE BARROS

Arr. SAMUEL GOIS

A ♩ = 100



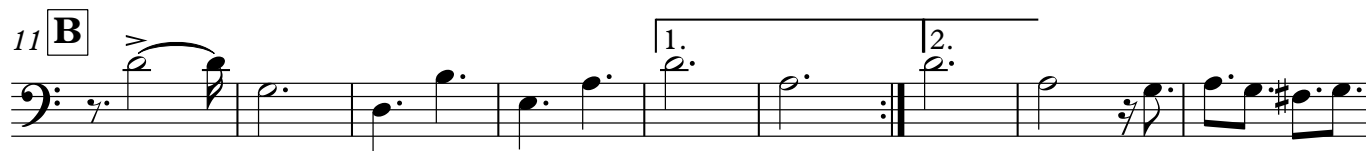
VEM CHEGANDO O NATAL

1-Trombone

ALINE BARROS

Arr. SAMUEL GOIS

♩ = 100

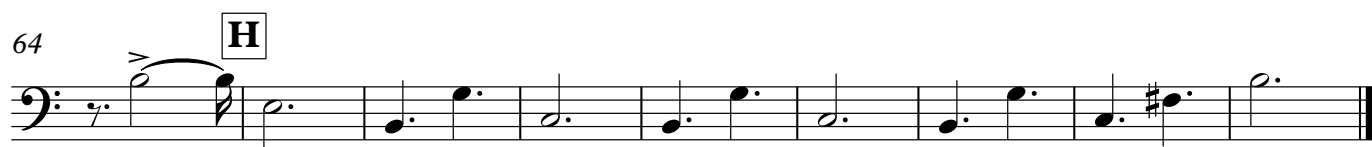
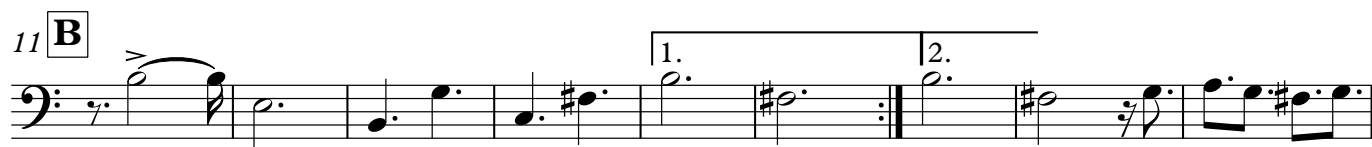


VEM CHEGANDO O NATAL

2-Trombone

ALINE BARROS

Arr. SAMUEL GOIS



VEM CHEGANDO O NATAL

3-Trombone

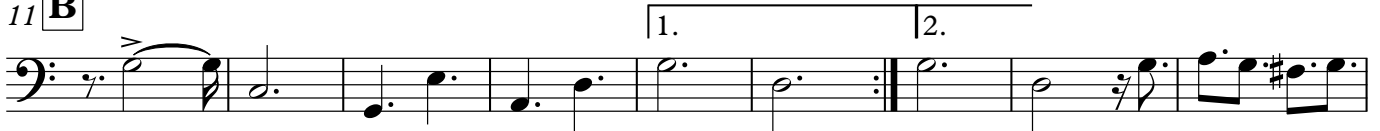
ALINE BARROS

Arr. SAMUEL GOIS

A ♩ = 100



11 **B**



20 **C**



27 **D**



37 **E**



47 **F**



55 **G**



64 **H**



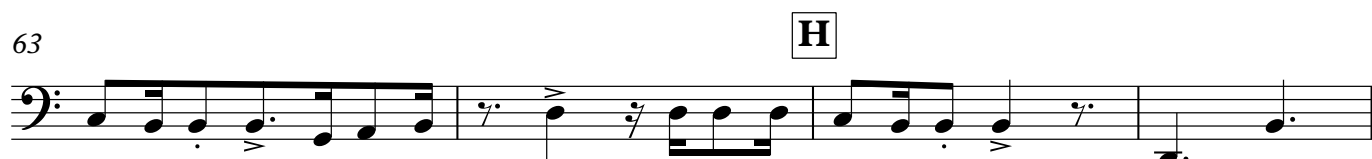
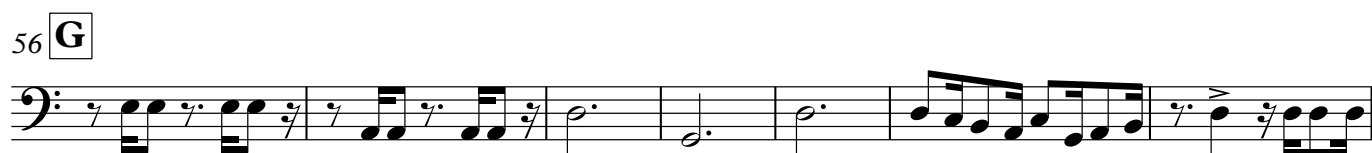
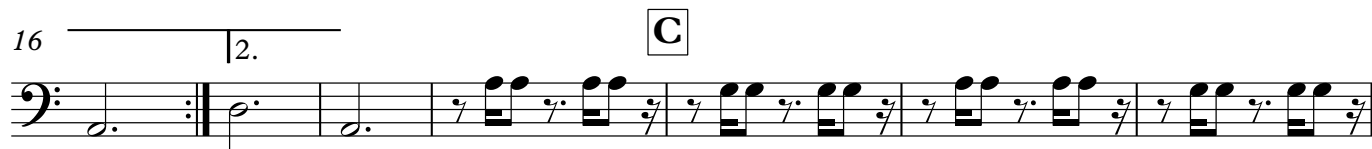
VEM CHEGANDO O NATAL

Trombone baixo

ALINE BARROS

Arr. SAMUEL GOIS

A ♩ = 100
4



VEM CHEGANDO O NATAL

1-Eufônio

ALINE BARROS

Arr. SAMUEL GOIS

A ♩ = 100
4

9 **B** 1.

16 2. **C**

22

28 **D**

34 **E** *pp*

41 **F** 5

51

56 **G**

63 **H**

67

VEM CHEGANDO O NATAL

2-Eufônio

ALINE BARROS

Arr. SAMUEL GOIS

A ♩ = 100
4

9 **B** 1.

16 2. **C**

23

29 **D**

35 **E** 5 *pp*

46 **F**

52

56 **G**

63 **H**

67

VEM CHEGANDO O NATAL

3-Eufônio

ALINE BARROS

Arr. SAMUEL GOIS

A ♩ = 100
4

9 **B** 1.

16 2. **C**

23

29 **D**

35 **E** 5 *pp*

46 **F**

52

56 **G**

63 **H**

67

VEM CHEGANDO O NATAL

Sousafone em Sib

ALINE BARROS

Arr. SAMUEL GOIS

A ♩ = 100

8 **B**

17 **C**

23

29 **D**

36 **E** *pp*

44 **F**

51

56 **G**

62 **H**

68

VEM CHEGANDO O NATAL

Bateria

ALINE BARROS

Arr. SAMUEL GOIS

A ♩ = 100

5

9

13

17

20

24

29

33

38

42

46

B

C

D

E

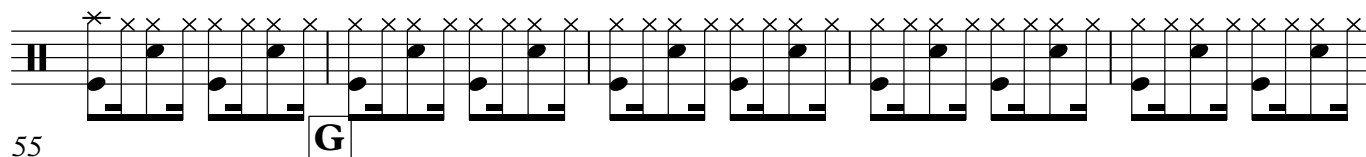
F

1.

2.

2

50



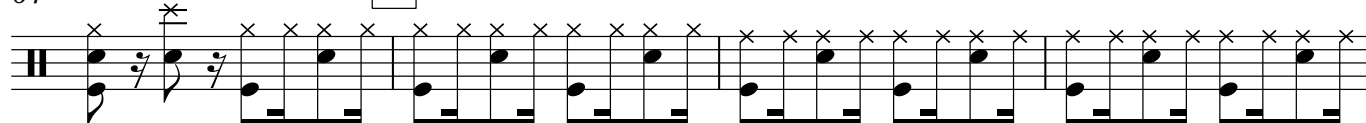
55



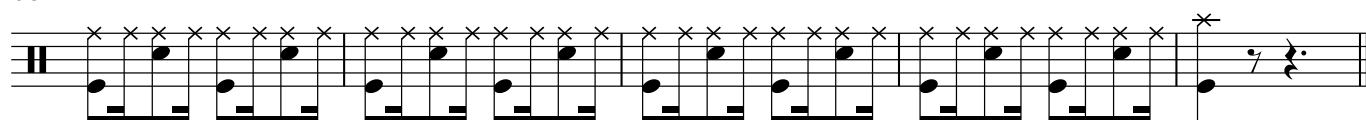
60



64



68



VEM CHEGANDO O NATAL

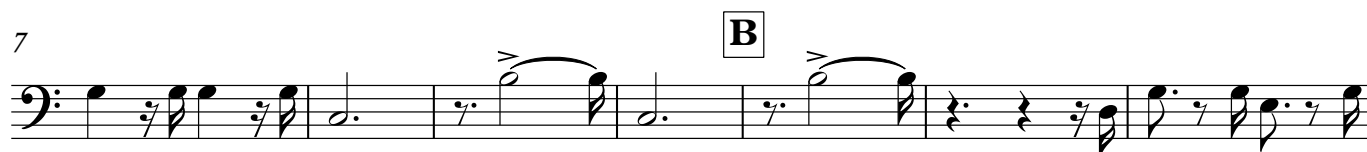
ALINE BARROS

Arr. SAMUEL GOIS

A ♩ = 100



7



14



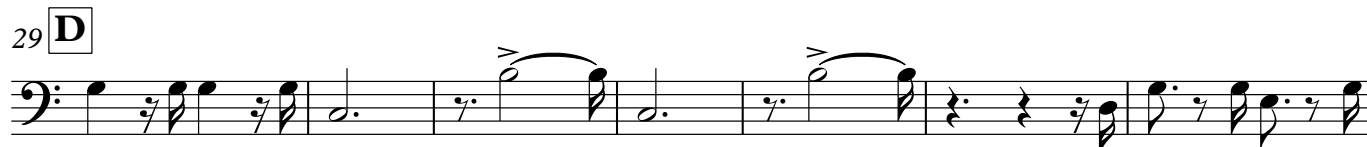
19



24



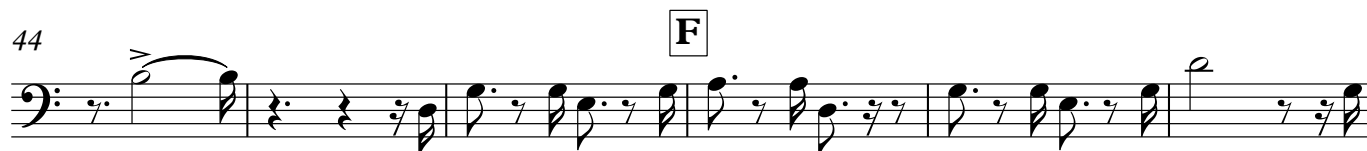
29 **D**



36



44



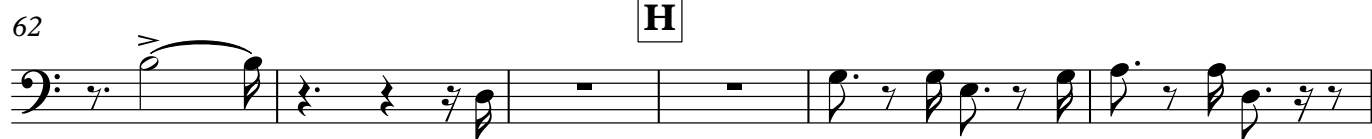
50



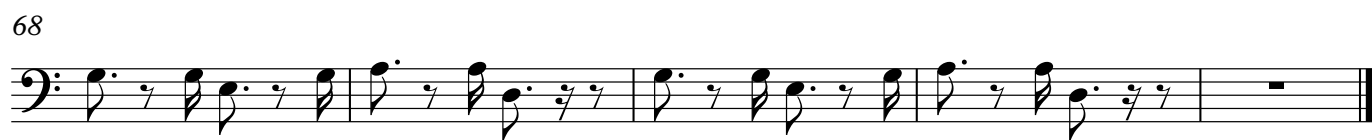
55



62 H



68



The image shows two staves of musical notation in bass clef. The first staff contains measures 62 through 67. Measure 62 begins with a half note G2, marked with an accent (>) and a slur. Measure 63 contains a whole rest. Measures 64 and 65 also contain whole rests. Measure 66 consists of two eighth notes, F2 and E2, beamed together. Measure 67 consists of two eighth notes, D2 and C2, beamed together. The second staff contains measures 68 through 72. Measures 68, 69, 70, and 71 each contain two eighth notes, F2 and E2, beamed together. Measure 72 contains a whole rest. The piece concludes with a double bar line at the end of measure 72.