

O Frêvo no Náutico Atlético Cearense

Manoel Ferreira

Flauta (C)

Requinta (Eb)

I Clarinete (Bb)

II Clarinete (Bb)

III Clarinete (Bb)

I Sax Alto (Eb)

III Sax Alto (Eb)

II Sax Tenor (Bb)

I Trompete (Bb)

II Trompete (Bb)

III Trompete (Bb)

I Trombone (C)

II Trombone (C)

III Trombone (C)

Bombardino (C)

Tuba (Eb)

Governo do Estado do Ceará - Secretaria da Cultura
Coordenação de Música

6

Flauta (C)

Musical staff for Flauta (C) in treble clef, key of Bb, showing a melodic line with eighth and sixteenth notes.

Requinta (Eb)

Musical staff for Requinta (Eb) in treble clef, key of Bb, showing a melodic line with eighth and sixteenth notes.

6

I Clarinete (Bb)

Musical staff for I Clarinete (Bb) in treble clef, key of Bb, showing a melodic line with eighth and sixteenth notes.

II Clarinete (Bb)

Musical staff for II Clarinete (Bb) in treble clef, key of Bb, showing a melodic line with eighth and sixteenth notes.

III Clarinete (Bb)

Musical staff for III Clarinete (Bb) in treble clef, key of Bb, showing a melodic line with eighth and sixteenth notes.

6

I Sax Alto (Eb)

Musical staff for I Sax Alto (Eb) in treble clef, key of Bb, showing a melodic line with eighth and sixteenth notes.

III Sax Alto (Eb)

Musical staff for III Sax Alto (Eb) in treble clef, key of Bb, showing a melodic line with eighth and sixteenth notes.

II Sax Tenor (Bb)

Musical staff for II Sax Tenor (Bb) in treble clef, key of Bb, showing a melodic line with eighth and sixteenth notes.

6

I Trompete (Bb)

Musical staff for I Trompete (Bb) in treble clef, key of Bb, showing a rhythmic line with eighth notes and rests.

II Trompete (Bb)

Musical staff for II Trompete (Bb) in treble clef, key of Bb, showing a rhythmic line with eighth notes and rests.

III Trompete (Bb)

Musical staff for III Trompete (Bb) in treble clef, key of Bb, showing a rhythmic line with eighth notes and rests.

6

I Trombone (C)

Musical staff for I Trombone (C) in bass clef, key of Bb, showing a rhythmic line with eighth notes and rests.

II Trombone (C)

Musical staff for II Trombone (C) in bass clef, key of Bb, showing a rhythmic line with eighth notes and rests.

III Trombone (C)

Musical staff for III Trombone (C) in bass clef, key of Bb, showing a rhythmic line with eighth notes and rests.

Bombardino (C)

Musical staff for Bombardino (C) in bass clef, key of Bb, showing a rhythmic line with eighth notes and rests.

Tuba (Eb)

Musical staff for Tuba (Eb) in bass clef, key of Bb, showing a rhythmic line with eighth notes and rests.

11

Flauta (C)

Requinta (Eb)

11

I Clarinete (Bb)

II Clarinete (Bb)

III Clarinete (Bb)

11

I Sax Alto (Eb)

III Sax Alto (Eb)

II Sax Tenor (Bb)

11

I Trompete (Bb)

II Trompete (Bb)

III Trompete (Bb)

11

I Trombone (C)

II Trombone (C)

III Trombone (C)

Bombardino (C)

Tuba (Eb)

16

Flauta (C)

Requinta (Eb)

16

I Clarinete (Bb)

II Clarinete (Bb)

III Clarinete (Bb)

16

I Sax Alto (Eb)

II Sax Alto (Eb)

III Sax Alto (Eb)

I Sax Tenor (Bb)

16

I Trompeta (Bb)

II Trompeta (Bb)

III Trompeta (Bb)

16

I Trombone (C)

II Trombone (C)


III Trombone (C)

Bombardino (C)


Tuba (Eb)

21

Flauta (C)




Requinta (Eb)




21


I Clarinete (Bb)



II Clarinete (Bb)




III Clarinete (Bb)




21


I Sax Alto (Eb)



III Sax Alto (Eb)



II Sax Tenor (Bb)




21

I Trompete (Bb)



II Trompete (Bb)




III Trompete (Bb)




21


I Trombone (C)




II Trombone (C)



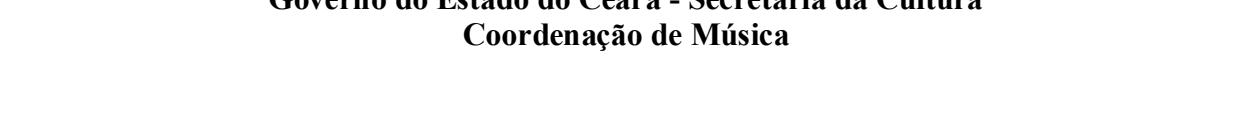
III Trombone (C)



Bombardino (C)



Tuba (Eb)



29

Flauta (C)

Requinta (Eb)

29

I Clarinete (Bb)

II Clarinete (Bb)

III Clarinete (Bb)

29

I Sax Alto (Eb)

III Sax Alto (Eb)

II Sax Tenor (Bb)

29

I Trompete (Bb)

II Trompete (Bb)

III Trompete (Bb)

29

I Trombone (C)

II Trombone (C)

III Trombone (C)

Bombardino (C)

Tuba (Eb)

Flauta (C)

Requinta (Eb)

I Clarinete (Bb)

II Clarinete (Bb)

III Clarinete (Bb)

I Sax Alto (Eb)

III Sax Alto (Eb)

II Sax Tenor (Bb)

34

1.

2.

Ao

&

+

34

1.

2.

Ao

&

+

I Trompete (Bb)

II Trompete (Bb)

III Trompete (Bb)

I Trombone (C)

II Trombone (C)

III Trombone (C)

Bombardino (C)

Tuba (Eb)

34

1.

2.

Ao

&

+

34

1.

2.

Ao

&

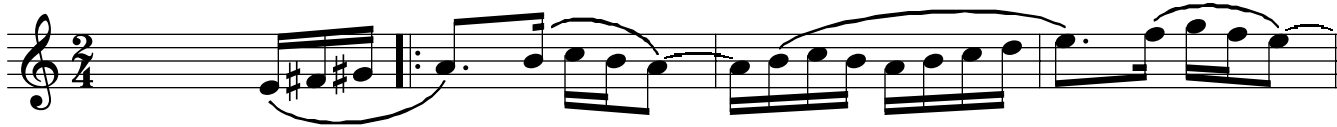
+

O Frêvo no Náutico Atlético Cearense

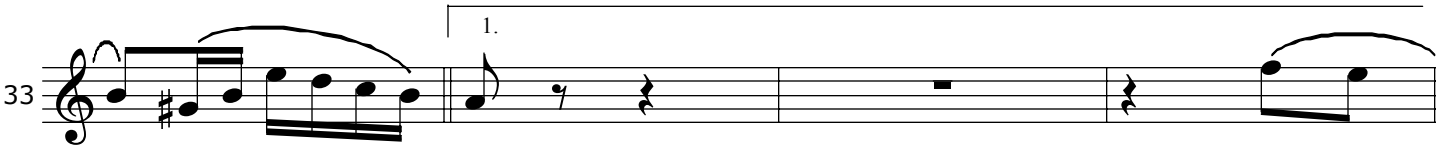
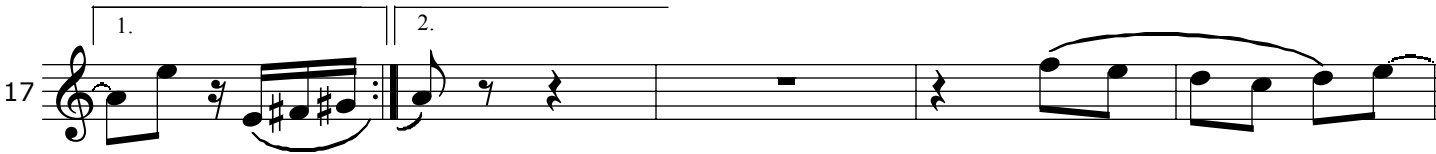
Requinta (Eb)

Manoel Ferreira

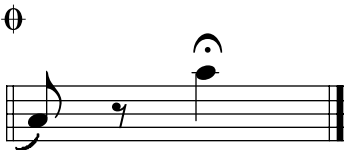
§



θ



Ao § & θ



O Frêvo no Náutico Atlético Cearense

Flauta (C)

Manoel Ferreira

Sheet music for Flauta (C) in 2/4 time, featuring a key signature of three flats (B-flat, E-flat, A-flat). The music is divided into measures, with measure numbers 5, 9, 13, 17, 22, 26, 32, and 36 indicated. The notation includes various musical symbols such as notes, rests, accidentals, and dynamic markings.

Measure 1: \S

Measure 5:

Measure 9:

Measure 13: \emptyset

Measure 17: 1. 2.

Measure 22:

Measure 26: 3

Measure 32: 1.

Measure 36: 2. \emptyset Ao \S & \emptyset

O Frêvo no Náutico Atlético Cearense

I Clarinete (Bb)

Manoel Ferreira

Sheet music for I Clarinete (Bb) in 2/4 time, featuring measures 1 through 36. The music includes various musical notations such as notes, rests, and dynamic markings.

Measures 1-4: Introduction with a repeat sign and a key signature change to Bb.

Measures 5-8: First staff of music.

Measures 9-12: Second staff of music.

Measures 13-16: Third staff of music.

Measures 17-20: Fourth staff of music, featuring first and second endings.

Measures 21-24: Fifth staff of music.

Measures 25-28: Sixth staff of music, featuring a triplet.

Measures 29-32: Seventh staff of music, featuring first and second endings.

Measures 33-36: Eighth staff of music, concluding with a key signature change to Bb and a final cadence.

O Frêvo no Náutico Atlético Cearense

III Clarinete (Bb)

Manoel Ferreira

Musical score for "The Rose Tree" in 2/4 time. The score is written on a single staff with a treble clef and a key signature of one flat (B-flat). The melody begins with a repeat sign. The first ending bracket covers measures 1 through 4, and the second ending bracket covers measures 5 through 8. The melody is composed of eighth and quarter notes, with some measures containing rests. The score concludes with a final measure marked with a double bar line.

O Frêvo no Náutico Atlético Cearense

II Clarinete (Bb)

Manoel Ferreira

Sheet music for II Clarinete (Bb) in 2/4 time, featuring measures 1 through 36. The music includes various musical notations such as notes, rests, and dynamic markings.

Measures 1-4: Introduction with a repeat sign and a key signature change to Bb.

Measures 5-8: First staff of music.

Measures 9-12: Second staff of music.

Measures 13-16: Third staff of music.

Measures 17-20: Fourth staff of music, including first and second endings.

Measures 21-24: Fifth staff of music.

Measures 25-28: Sixth staff of music, including a triplet.

Measures 29-32: Seventh staff of music, including first and second endings.

Measures 33-36: Eighth staff of music, including a key signature change to Bb and a final cadence.

O Frêvo no Náutico Atlético Cearense

I Sax Alto (Eb)

Manoel Ferreira

§

5

9

13

17

21

25

32

36

Ao § & θ

O Frêvo no Náutico Atlético Cearense

III Sax Alto (Eb)

Manoel Ferreira

1

5

9

13

17

21

25

32

36

1.

2.

3.

1.

2.

Ao % & θ

Governo do Estado do Ceará - Secretaria da Cultura
Coordenação de Música

O Frêvo no Náutico Atlético Cearense

II Sax Tenor (Bb)

Manoel Ferreira

Sheet music for II Sax Tenor (Bb) in 2/4 time, featuring a key signature of one flat (Bb) and a common time signature of 2/4. The music is composed of 36 measures, divided into two systems of 18 measures each. The notation includes various musical symbols such as treble clef, key signature, time signature, and various note values (quarter, eighth, sixteenth, and thirty-second notes). The music is marked with a repeat sign at the beginning of the first system and a double bar line at the end of the second system. The notation includes various musical symbols such as treble clef, key signature, time signature, and various note values (quarter, eighth, sixteenth, and thirty-second notes). The music is marked with a repeat sign at the beginning of the first system and a double bar line at the end of the second system.

1. 2.

3.

1.

2.

Ao % & Ø

O Frêvo no Náutico Atlético Cearense

I Trompete (Bb)

Manoel Ferreira

Sheet music for I Trompete (Bb) of the song "O Frêvo no Náutico Atlético Cearense". The music is in 2/4 time, key of Bb major, and consists of 36 measures.

Measures 1-4: Introduction with a repeat sign and a key signature change to Bb.

Measures 5-8: First staff of music.

Measures 9-12: Second staff of music.

Measures 13-16: Third staff of music.

Measures 17-20: Fourth staff of music, featuring a first ending (1.) and a second ending (2.).

Measures 21-24: Fifth staff of music.

Measures 25-28: Sixth staff of music.

Measures 29-32: Seventh staff of music, featuring a first ending (1.) and a second ending (2.).

Measures 33-36: Eighth staff of music, concluding with a key signature change to Bb and a repeat sign.

Additional notation: A key signature change to Bb is indicated at measure 13. A key signature change to Bb is indicated at measure 33. A key signature change to Bb is indicated at measure 36.

O Frêvo no Náutico Atlético Cearense

II Trompete (Bb)

Manoel Ferreira

Sheet music for II Trompete (Bb) of the song "O Frêvo no Náutico Atlético Cearense". The music is in 2/4 time, key of Bb major, and consists of 36 measures.

Measures 1-4: Introduction with a repeat sign and a key signature change to Bb.

Measures 5-8: First staff of music.

Measures 9-12: Second staff of music.

Measures 13-16: Third staff of music.

Measures 17-20: Fourth staff of music, featuring a first and second ending.

Measures 21-24: Fifth staff of music.

Measures 25-28: Sixth staff of music.

Measures 29-32: Seventh staff of music, featuring a first ending and a triplet.

Measures 33-36: Eighth staff of music, featuring a second ending and a key signature change to Bb.

Measures 37-40: Final staff of music, featuring a key signature change to Bb and a final cadence.

O Frêvo no Náutico Atlético Cearense

I Trompete (Bb)

Manoel Ferreira

Sheet music for I Trompete (Bb) of the song "O Frêvo no Náutico Atlético Cearense". The music is in 2/4 time and B-flat major. The score includes measures 1 through 36, with repeat signs and first/second endings. The notation includes various musical symbols such as notes, rests, and dynamic markings.

Measures 1-4: Introduction with a key signature change to B-flat major and a repeat sign.

Measures 5-8: First staff with a key signature change to B-flat major and a repeat sign.

Measures 9-12: Second staff with a key signature change to B-flat major and a repeat sign.

Measures 13-16: Third staff with a key signature change to B-flat major and a repeat sign.

Measures 17-20: Fourth staff with a key signature change to B-flat major and a repeat sign.

Measures 21-24: Fifth staff with a key signature change to B-flat major and a repeat sign.

Measures 25-28: Sixth staff with a key signature change to B-flat major and a repeat sign.

Measures 29-32: Seventh staff with a key signature change to B-flat major and a repeat sign.

Measures 33-36: Eighth staff with a key signature change to B-flat major and a repeat sign.

Measures 37-40: Final staff with a key signature change to B-flat major and a repeat sign.

O Frêvo no Náutico Atlético Cearense

I Trombone (C)

Manoel Ferreira

Sheet music for I Trombone (C) in 2/4 time, key of B-flat major. The score consists of 36 measures, divided into systems of five measures each. The notation includes various musical symbols such as notes, rests, accidentals, and dynamic markings.

Measures 1-5: Introduction and first phrase.

Measures 6-10: Second phrase with a repeat sign.

Measures 11-15: Third phrase with a repeat sign.

Measures 16-20: Fourth phrase with a repeat sign.

Measures 21-25: Fifth phrase with a repeat sign.

Measures 26-30: Sixth phrase with a repeat sign.

Measures 31-35: Seventh phrase with a repeat sign.

Measure 36: Final measure.

Additional markings: Ao, S, & 0.

O Frêvo no Náutico Atlético Cearense

II Trombone (C)

Manoel Ferreira

Sheet music for II Trombone (C), measures 1 to 36. The music is in 2/4 time, key of B-flat major (two flats). The notation includes various musical symbols such as notes, rests, accidentals, and dynamic markings.

Measures 1-4: Introduction with a repeat sign and a key signature change to B-flat major.

Measures 5-8: First staff with a repeat sign and a key signature change to B-flat major.

Measures 9-12: Second staff with a repeat sign and a key signature change to B-flat major.

Measures 13-16: Third staff with a repeat sign and a key signature change to B-flat major.

Measures 17-20: Fourth staff with a repeat sign and a key signature change to B-flat major.

Measures 21-24: Fifth staff with a repeat sign and a key signature change to B-flat major.

Measures 25-28: Sixth staff with a repeat sign and a key signature change to B-flat major.

Measures 29-32: Seventh staff with a repeat sign and a key signature change to B-flat major.

Measures 33-36: Eighth staff with a repeat sign and a key signature change to B-flat major.

Measures 37-40: Final section with a repeat sign and a key signature change to B-flat major.

Manoel Ferreira

Governo do Estado do Ceará - Secretaria da Cultura
Coordenação de Música

O Frêvo no Náutico Atlético Cearense

Tuba (Bb)

Manoel Ferreira

Sheet music for Tuba (Bb) in 2/4 time, featuring a key signature of one flat (Bb) and a common time signature of 2/4. The music is written in bass clef and includes various musical notations such as notes, rests, and bar lines.

Measure numbers are indicated on the left side of the staves: 5, 9, 13, 17, 21, 26, 31, 36.

Rehearsal marks (S) are present at measures 1, 17, and 36.

First and second endings are marked with "1." and "2." above the staves.

Repeat signs (A) and a double bar line (O) are present at the end of the piece.

O Frêvo no Náutico Atlético Cearense

Tuba (Eb)

Manoel Ferreira



5

9

13

17

21

26

31

36

1.

2.

1.

2.

Ao

&

0

0

O Frêvo no Náutico Atlético Cearense

Bombardino (Bb)

Manoel Ferreira

Sheet music for Bombardino (Bb) in 2/4 time, composed by Manoel Ferreira. The score is written in bass clef with a key signature of one flat (Bb).

The music is divided into systems, with measures numbered 1 through 36. The notation includes various musical symbols such as notes, rests, accidentals, and dynamic markings.

Key features of the notation include:

- Measures 1-4: Introduction with a repeat sign and a key signature change to Bb.
- Measures 5-8: First system, featuring a half note and a quarter note.
- Measures 9-12: Second system, featuring eighth notes and a half note.
- Measures 13-16: Third system, featuring a half note and a quarter note.
- Measures 17-20: Fourth system, featuring a first ending bracket and a second ending bracket.
- Measures 21-24: Fifth system, featuring a half note and a quarter note.
- Measures 25-28: Sixth system, featuring eighth notes and a half note.
- Measures 29-32: Seventh system, featuring a first ending bracket and a second ending bracket.
- Measures 33-36: Eighth system, featuring a half note and a quarter note.

The score concludes with a final measure marked with a double bar line.

O Frêvo no Náutico Atlético Cearense

Bombardino (C)

Manoel Ferreira

Sheet music for Bombardino (C) in 2/4 time, key of C major. The score is written in bass clef and includes measures 1 through 36, with repeat signs and first/second endings.

Measures 1-4: Main melody with a repeat sign at measure 4.

Measures 5-8: Continuation of the melody.

Measures 9-12: Continuation of the melody.

Measures 13-16: Continuation of the melody.

Measures 17-20: First ending (1.) and second ending (2.) leading to measure 21.

Measures 21-24: Continuation of the melody.

Measures 25-28: Continuation of the melody.

Measures 29-32: Continuation of the melody.

Measures 33-36: Continuation of the melody, ending with a repeat sign and first/second endings.

Additional notation: Ao S & O