

# HINO DE ARARENDÁ

Zilmar Mendes Martins

Jorge do Amaral Dias

Arr.: Manoel Ferreira

Flauta (C)

Requinta (E $\flat$ )

1 $^{\circ}$  Clarinete (B $\flat$ )

2 $^{\circ}$  Clarinete (B $\flat$ )

3 $^{\circ}$  Clarinete (B $\flat$ )

Sax-Soprano (B $\flat$ )

1 $^{\circ}$  Sax-Alto (E $\flat$ )

3 $^{\circ}$  Sax-Alto (E $\flat$ )

Sax-Tenor (B $\flat$ )

1 $^{\circ}$  Trompete (B $\flat$ )

2 $^{\circ}$  Trompete (B $\flat$ )

3 $^{\circ}$  Trompete (B $\flat$ )

1 $^{\circ}$  Sax-Horn (E $\flat$ )

2 $^{\circ}$  Sax-Horn (E $\flat$ )

3 $^{\circ}$  Sax-Horn (E $\flat$ )

1 $^{\circ}$  Trombone (C)

2 $^{\circ}$  Trombone (C)

3 $^{\circ}$  Trombone (C)

Bombardino (C)

Tuba (E $\flat$ )

Percussão

Governo do Estado do Ceará - Secretaria da Cultura e Desporto  
Coordenação de Música

10

Flauta (C)

Musical staff for Flauta (C) showing a melody with eighth and quarter notes, starting at measure 10.

Requinta (E $\flat$ )

Musical staff for Requinta (E $\flat$ ) showing a melody with eighth and quarter notes, starting at measure 10.

1 $^{\circ}$  Clarinete (B $\flat$ )

Musical staff for 1 $^{\circ}$  Clarinete (B $\flat$ ) showing a melody with eighth and quarter notes, starting at measure 10.

2 $^{\circ}$  Clarinete (B $\flat$ )

Musical staff for 2 $^{\circ}$  Clarinete (B $\flat$ ) showing a melody with eighth and quarter notes, starting at measure 10.

3 $^{\circ}$  Clarinete (B $\flat$ )

Musical staff for 3 $^{\circ}$  Clarinete (B $\flat$ ) showing a melody with eighth and quarter notes, starting at measure 10.

Sax-Soprano (B $\flat$ )

Musical staff for Sax-Soprano (B $\flat$ ) showing a melody with eighth and quarter notes, starting at measure 10.

1 $^{\circ}$  Sax-Alto (E $\flat$ )

Musical staff for 1 $^{\circ}$  Sax-Alto (E $\flat$ ) showing a melody with eighth and quarter notes, starting at measure 10.

3 $^{\circ}$  Sax-Alto (E $\flat$ )

Musical staff for 3 $^{\circ}$  Sax-Alto (E $\flat$ ) showing a melody with eighth and quarter notes, starting at measure 10.

Sax-Tenor (B $\flat$ )

Musical staff for Sax-Tenor (B $\flat$ ) showing a melody with eighth and quarter notes, starting at measure 10.

10

1 $^{\circ}$  Trompete (B $\flat$ )

Musical staff for 1 $^{\circ}$  Trompete (B $\flat$ ) showing a melody with eighth and quarter notes, starting at measure 10.

2 $^{\circ}$  Trompete (B $\flat$ )

Musical staff for 2 $^{\circ}$  Trompete (B $\flat$ ) showing a melody with eighth and quarter notes, starting at measure 10.

3 $^{\circ}$  Trompete (B $\flat$ )

Musical staff for 3 $^{\circ}$  Trompete (B $\flat$ ) showing a melody with eighth and quarter notes, starting at measure 10.

1 $^{\circ}$  Sax-Horn (E $\flat$ )

Musical staff for 1 $^{\circ}$  Sax-Horn (E $\flat$ ) showing a melody with eighth and quarter notes, starting at measure 10.

2 $^{\circ}$  Sax-Horn (E $\flat$ )

Musical staff for 2 $^{\circ}$  Sax-Horn (E $\flat$ ) showing a melody with eighth and quarter notes, starting at measure 10.

3 $^{\circ}$  Sax-Horn (E $\flat$ )

Musical staff for 3 $^{\circ}$  Sax-Horn (E $\flat$ ) showing a melody with eighth and quarter notes, starting at measure 10.

1 $^{\circ}$  Trombone (C)

Musical staff for 1 $^{\circ}$  Trombone (C) showing a melody with eighth and quarter notes, starting at measure 10.

2 $^{\circ}$  Trombone (C)

Musical staff for 2 $^{\circ}$  Trombone (C) showing a melody with eighth and quarter notes, starting at measure 10.

3 $^{\circ}$  Trombone (C)

Musical staff for 3 $^{\circ}$  Trombone (C) showing a melody with eighth and quarter notes, starting at measure 10.

Bombardino (C)

Musical staff for Bombardino (C) showing a melody with eighth and quarter notes, starting at measure 10.

Tuba (E $\flat$ )

Musical staff for Tuba (E $\flat$ ) showing a melody with eighth and quarter notes, starting at measure 10.

10

Percussão

Musical staff for Percussão showing a rhythmic pattern with eighth and quarter notes, starting at measure 10.

19

Flauta (C)

Requinta (E♭)

1º Clarinete (B♭)

2º Clarinete (B♭)

3º Clarinete (B♭)

Sax-Soprano (B♭)

1º Sax-Alto (E♭)

3º Sax-Alto (E♭)

Sax-Tenor (B♭)

19

1º Trompete (B♭)

2º Trompete (B♭)

3º Trompete (B♭)

1º Sax-Horn (E♭)

2º Sax-Horn (E♭)

3º Sax-Horn (E♭)

1º Trombone (C)

2º Trombone (C)

3º Trombone (C)

Bombardino (C)

Tuba (E♭)

19

Percussão

Governo do Estado do Ceará - Secretaria da Cultura e Desporto  
Coordenação de Música

## HINO DE ARARENDÁ

5

[illegible]

# HINO DE ARARENDÁ

Flauta (C)

Zilmar Mendes Martins  
Jorge do Amaral Dias  
Arr.: Manoel Ferreira

Introd.

6

12

18

24

32

38

44

Ao 2 vezes & rall.

# HINO DE ARARENDÁ

Requinta (E $\flat$ )

Zilmar Mendes Martins  
Jorge do Amaral Dias  
Arr.: Manoel Ferreira

Introd.

6

12

18

24

32

38

44

2

3

3

Ao  $\text{S}$  2 vezes &  $\text{C}$

rall.

# HINO DE ARARENDÁ

## 1º Clarinete (B $\flat$ )

Zilmar Mendes Martins  
Jorge do Amaral Dias  
Arr.: Manoel Ferreira

Introd.

6

12

18

24

30

36

41

Ao  $\text{Sf}$  2 vezes &  $\text{F}$

rall.



# HINO DE ARARENDÁ

## 2º Clarinete (B $\flat$ )

Zilmar Mendes Martins  
Jorge do Amaral Dias  
Arr.: Manoel Ferreira

Introd.

6

12

18

24

30

36

41

Ao  $\text{S}$  2 vezes &  $\text{O}$

rall.

# HINO DE ARARENDÁ

## 3º Clarinete (B♭)

Zilmar Mendes Martins  
Jorge do Amaral Dias  
Arr.: Manoel Ferreira

Introd.

6

12

18

24

30

36

41

Ao 2 vezes &

rall.

# HINO DE ARARENDÁ

Sax-Soprano (B $\flat$ )

Zilmar Mendes Martins  
Jorge do Amaral Dias  
Arr.: Manoel Ferreira

Introd.

6

12

18

24

30

36

41

Ao 2 vezes &

rall.

# HINO DE ARARENDÁ

1º Sax-Alto (E♭)

Zilmar Mendes Martins  
Jorge do Amaral Dias  
Arr.: Manoel Ferreira

Introd.

6

12

18

24

30

36

41

Ao 2 vezes &

rall.

# HINO DE ARARENDÁ

### 3º Sax-Alto (E $\flat$ )

Zilmar Mendes Martins  
Jorge do Amaral Dias  
Arr.: Manoel Ferreira

**Introd.**

6

12

18

24

30

36

41

Ao 2 vezes

rall.

# HINO DE ARARENDÁ

Sax-Tenor (B $\flat$ )

Zilmar Mendes Martins  
Jorge do Amaral Dias  
Arr.: Manoel Ferreira

Introd.

6

12

18

24

30

36

41

Ao 2 vezes

rall.

# HINO DE ARARENDÁ

## 1º Trompete (B $\flat$ )

Zilmar Mendes Martins  
Jorge do Amaral Dias  
Arr.: Manoel Ferreira

Introd.

6

13

21

28

34

41

Ao  $\text{Sf}$  2 vezes &  $\text{F}$

rall.

# HINO DE ARARENDÁ

## 2º Trompete (B $\flat$ )

Zilmar Mendes Martins  
Jorge do Amaral Dias  
Arr.: Manoel Ferreira

Introd.

6

13

21

28

34

41

*rall.*



# HINO DE ARARENDÁ

## 3º Trompete (B $\flat$ )

Zilmar Mendes Martins  
Jorge do Amaral Dias  
Arr.: Manoel Ferreira

Introd.

6

13

21

28

34

41

Ao 2 vezes &

rall.

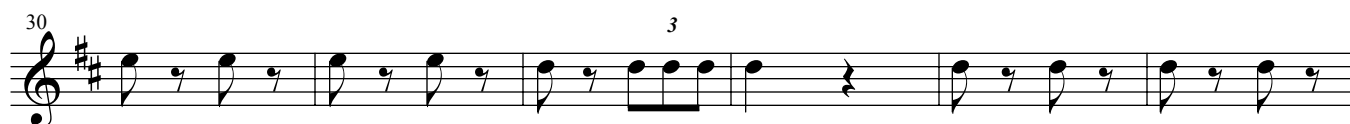
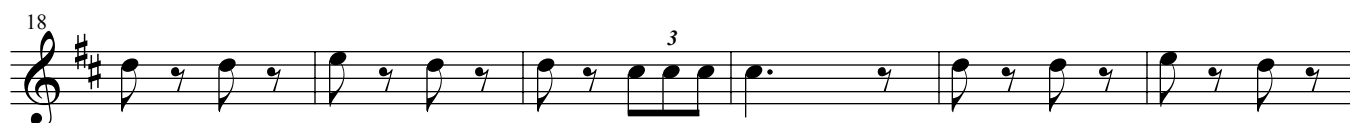
# HINO DE ARARENDÁ

## 1º Sax-Horn (E $\flat$ )

Zilmar Mendes Martins  
Jorge do Amaral Dias  
Arr.: Manoel Ferreira

**Introd.**

§



*rall.*

# HINO DE ARARENDÁ

## 2º Sax-Horn (E♭)

Zilmar Mendes Martins  
Jorge do Amaral Dias  
Arr.: Manoel Ferreira

Introd.

6

12

18

24

30

36

41

*rall.*

Ao 2 vezes

# HINO DE ARARENDÁ

3º Sax-Horn (E $\flat$ )

Zilmar Mendes Martins  
Jorge do Amaral Dias  
Arr.: Manoel Ferreira

Introd.

6

12

18

24

30

36

41

*rall.*

# HINO DE ARARENDÁ

## 1º Trombone (C)

Zilmar Mendes Martins  
Jorge do Amaral Dias  
Arr.: Manoel Ferreira

Introd.

6

12

18

24

30

36

41

Ao 2 vezes &

rall.

# HINO DE ARARENDÁ

## 2º Trombone (C)

Zilmar Mendes Martins  
Jorge do Amaral Dias  
Arr.: Manoel Ferreira

Introd.

6

12

18

24

30

36

41

Ao 2 vezes & rall.

# HINO DE ARARENDÁ

## 3º Trombone (C)

Zilmar Mendes Martins  
Jorge do Amaral Dias  
Arr.: Manoel Ferreira

Introd.

6

12

18

24

30

36

41

Ao 2 vezes &

rall.

# HINO DE ARARENDÁ

Bombardino (B $\flat$ )

Zilmar Mendes Martins  
Jorge do Amaral Dias  
Arr.: Manoel Ferreira

Introd.

6

12

18

24

30

36

41

Ao 2 vezes &

rall.



# HINO DE ARARENDÁ

## Bombardino (C)

Zilmar Mendes Martins  
Jorge do Amaral Dias  
Arr.: Manoel Ferreira

Introd.

6

12

18

24

30

36

41

Ao 2 vezes &

rall.

# HINO DE ARARENDÁ

Tuba (B $\flat$ )

Zilmar Mendes Martins  
Jorge do Amaral Dias  
Arr.: Manoel Ferreira

Introd.

6

12

18

24

30

36

41

Ao 2 vezes &

rall.

# HINO DE ARARENDÁ

Tuba (C)

Zilmar Mendes Martins  
Jorge do Amaral Dias  
Arr.: Manoel Ferreira

Introd.

6

12

18

24

30

36

41

*rall.*

# HINO DE ARARENDÁ

Tuba (E $\flat$ )

Zilmar Mendes Martins  
Jorge do Amaral Dias  
Arr.: Manoel Ferreira

Introd.

6

12

18

24

30

36

41

*rall.*

# HINO DE ARARENDÁ

## Percussão

Zilmar Mendes Martins  
Jorge do Amaral Dias  
Arr.: Manoel Ferreira

Introd.

3

7

13

20

27

34

41

Ao 2 vezes &

rall.