

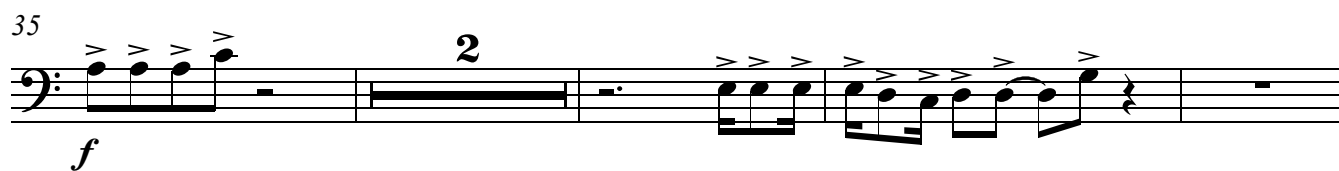
Trombone

Moderato ♩ = 88

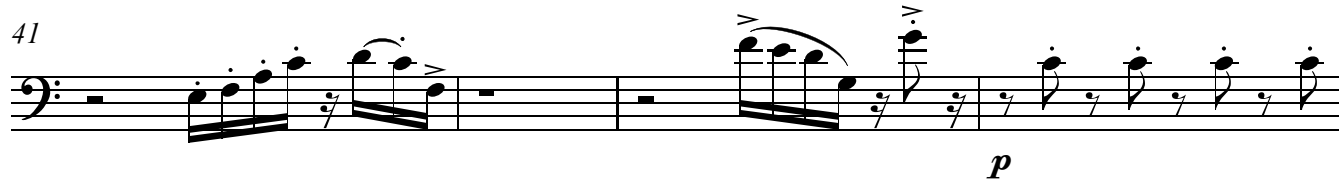
30

Musical notation for the bass line of 'The Rose Tree'. The notation is on a single staff with a bass clef. It begins with a treble clef and a key signature of one flat (B-flat). The melody starts with a quarter note G2, followed by a quarter note F2, a quarter note E2, and a quarter note D2. This is followed by a quarter rest, then a quarter note C2, and a quarter note B1. The melody continues with a quarter note A1, a quarter note G1, and a quarter note F1. The piece ends with a double bar line and a repeat sign. The number 30 is written above the first measure.

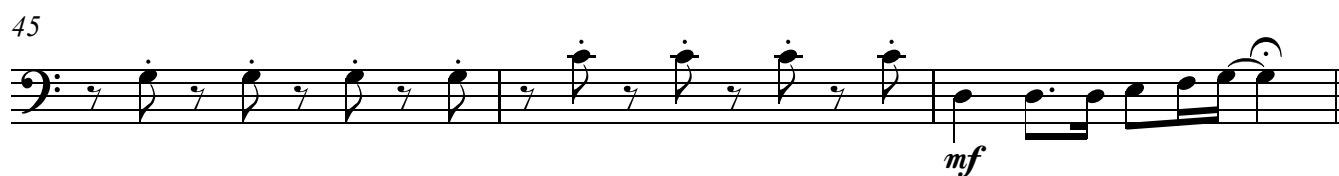
35 *f* **2**



41 *p*



45 *mf*



48 Adagio ♩ = 60



52 Allegro ♩ = 110

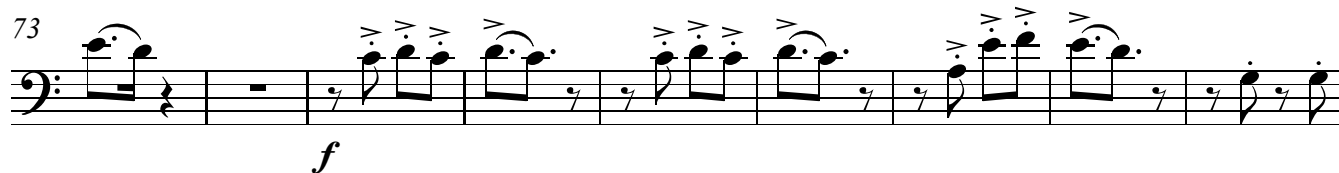
f



62 **4**



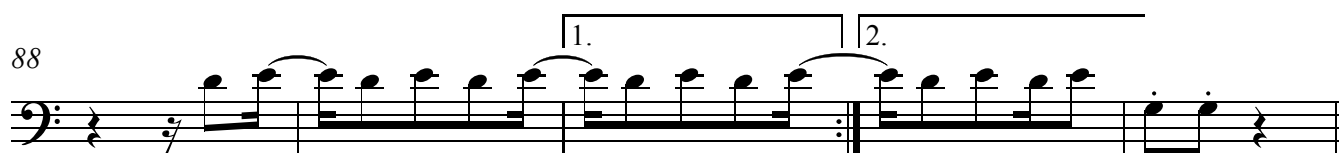
73 *f*



82



88 1. 2.

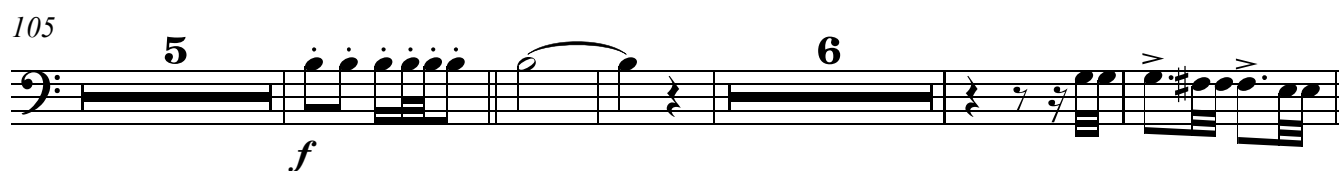


93 Andante ♩ = 80

2 **2** *f* **5** *f*



105 **5** *f* **6**

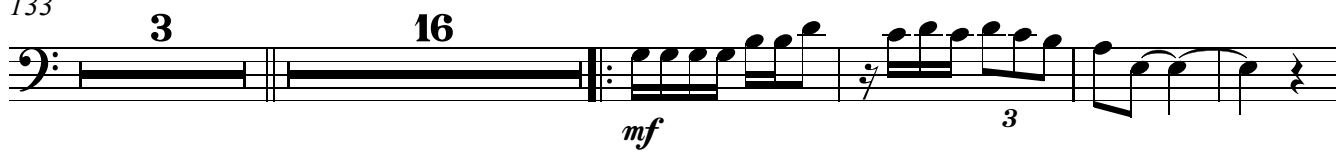


Trombone

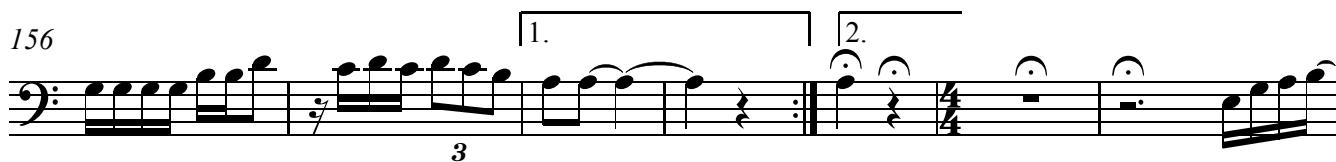
3

121 Andante $\text{♩} = 88$ 

133



156



163

Andante $\text{♩} = 80$ 

167

