



10

B $\flat$  Tpt.

B $\flat$  Tpt.

B $\flat$  Tpt.

Flghn.

Flghn.

1.

15

B $\flat$  Tpt.

B $\flat$  Tpt.

B $\flat$  Tpt.

Flghn.

Flghn.

2.

$\text{♩} = 110$

*mf*

*mf*

*mf*

*mf*

*mf*

*mf*

19

B $\flat$  Tpt.

B $\flat$  Tpt.

B $\flat$  Tpt.

Flghn.

Flghn.

Measures 19-22. Measures 19-20 show B $\flat$  Trumpets and Flutes playing a melodic line. Measures 21-22 show a change in the flute part with a key signature change to one sharp (F#).

23

B $\flat$  Tpt.

B $\flat$  Tpt.

B $\flat$  Tpt.

Flghn.

Flghn.

Measures 23-26. Measures 23-24 show B $\flat$  Trumpets playing a melodic line. Measures 25-26 show a change in the flute part with a key signature change to one sharp (F#).

28 *rit.* Mazuca ♩ = 96

B $\flat$  Tpt. B $\flat$  Tpt. B $\flat$  Tpt. Flghn. Flghn.

33

B $\flat$  Tpt. B $\flat$  Tpt. B $\flat$  Tpt. Flghn. Flghn.

38 **Fim**

B $\flat$  Tpt.  
B $\flat$  Tpt.  
B $\flat$  Tpt.  
Flghn.  
Flghn.

41

B $\flat$  Tpt.  
B $\flat$  Tpt.  
B $\flat$  Tpt.  
Flghn.  
Flghn.

44

B $\flat$  Tpt.

B $\flat$  Tpt.

B $\flat$  Tpt.

Flghn.

Flghn.

47

1.

2.

B $\flat$  Tpt.

B $\flat$  Tpt.

B $\flat$  Tpt.

Flghn.

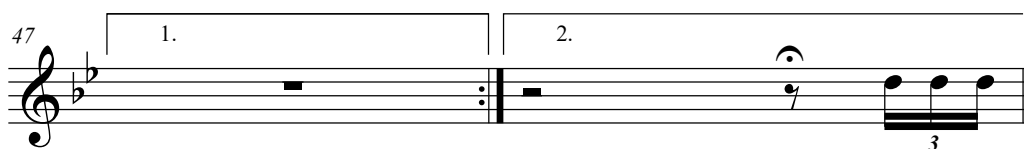
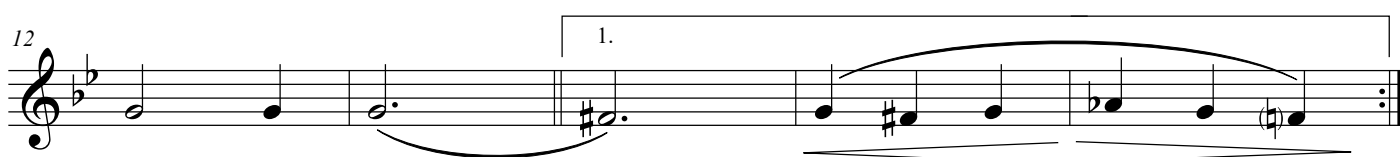
Flghn.

D.C. al Fine

## Uma Fantasia Brasileira

2º Movimento

José Ursicino da Silva (Duda)

Mazuca  $\text{♩} = 96$ 

D.C. al Fine

## Uma Fantasia Brasileira

2º Movimento

José Ursicino da Silva (Duda)

Mazuca ♩ = 96

7

12

17

24

32

39

45

48

**Fim**

**D.C. al Fine**



## Uma Fantasia Brasileira

2º Movimento

José Ursicino da Silva (Duda)

Mazuca ♩ = 96

5

10

15

20

30

35

40

45

*mp*

*mp*

1.

2.

♩ = 110

*mf*

3

4

*rit.*

Mazuca ♩ = 96

Fim

1.

2.

D.C. al Fine

## Uma Fantasia Brasileira

2º Movimento

José Ursicino da Silva (Duda)

Mazuca ♩ = 96

6

11

16

21

27

33

39

45

*mp*

*mf*

*mf*

*mf*

*rit.*

**Fim**

**D.C. al Fine**

## Uma Fantasia Brasileira

2º Movimento

José Ursicino da Silva (Duda)

Mazuca ♩ = 96

6

11

16

21

27

33

38

44

*mp*

*mf*

*mf*

*mf*

*rit.*

**Fim**

1.

2.

D.C. al Fine