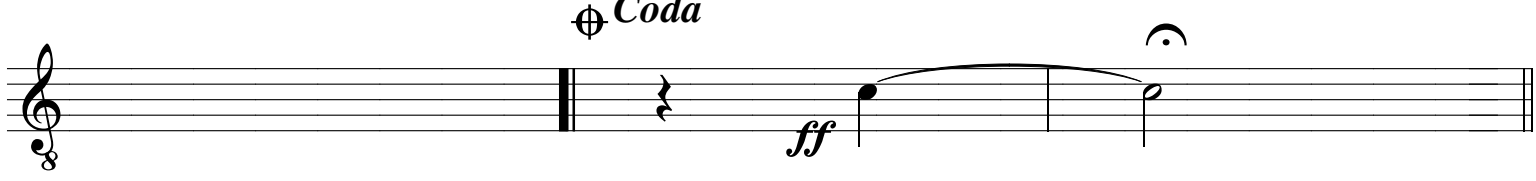
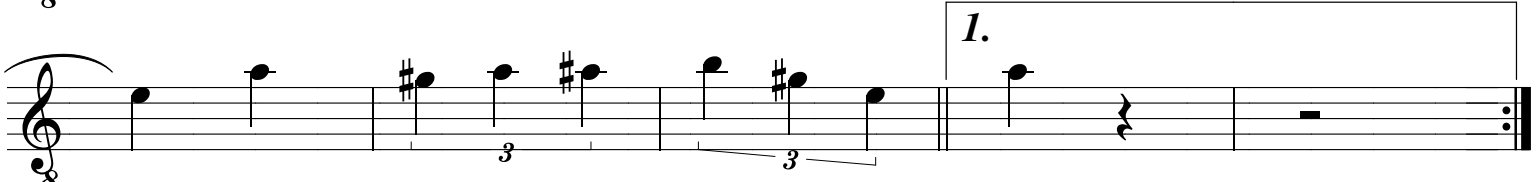
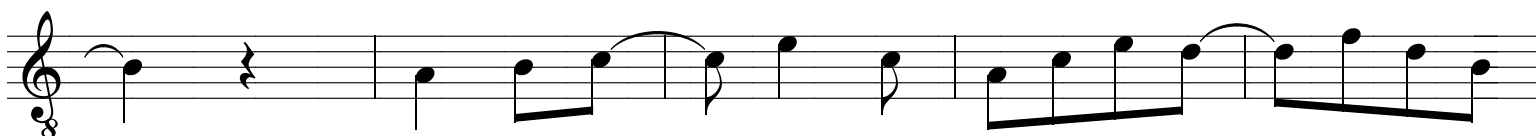
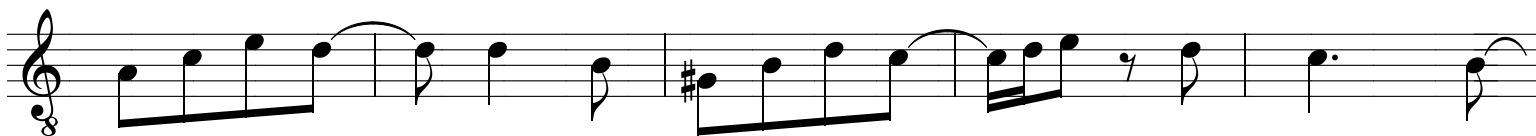


# CABÊLO DE FÔGO

## FREVO

ORQUESTRA DE FREVO

de NUNES/Arr. DUDA



# CABÊLO DE FÔGO

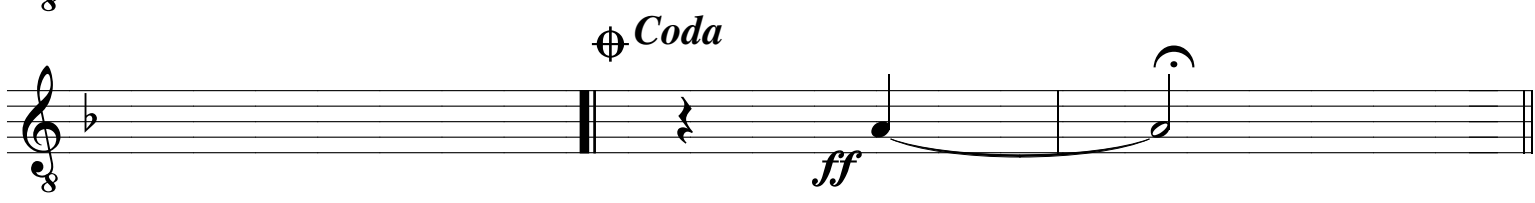
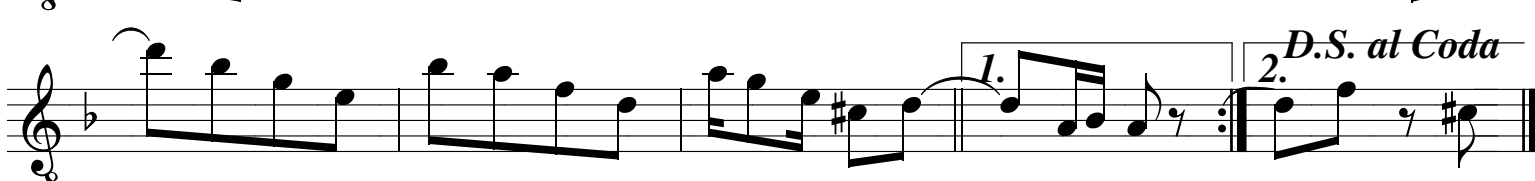
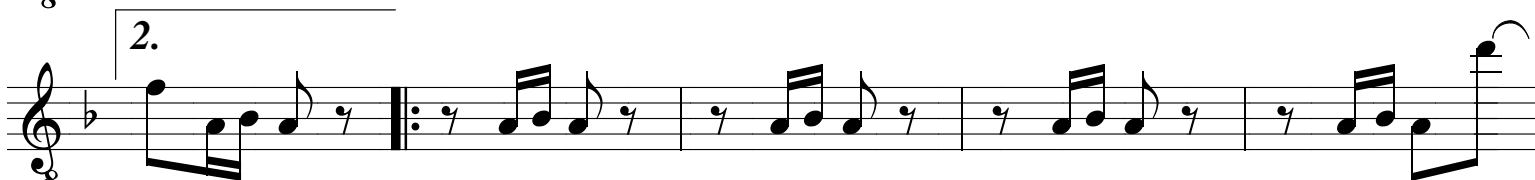
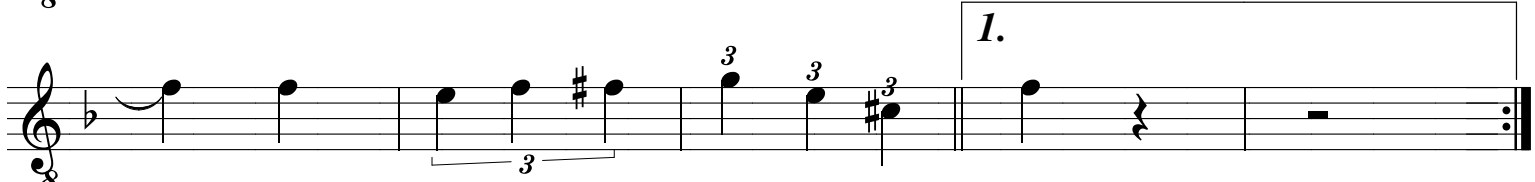
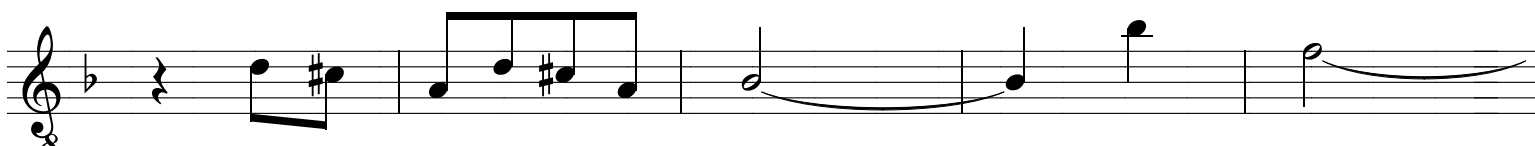
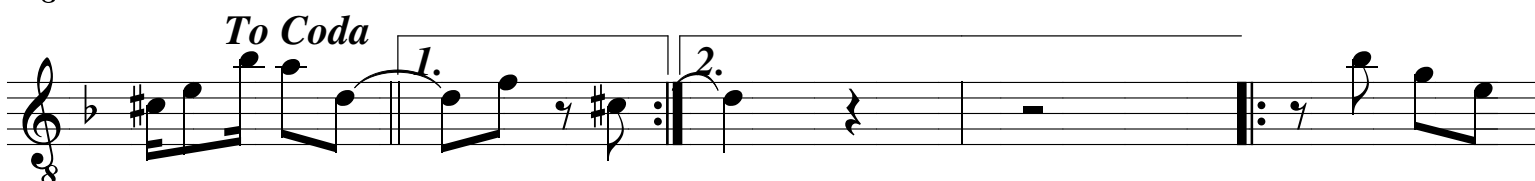
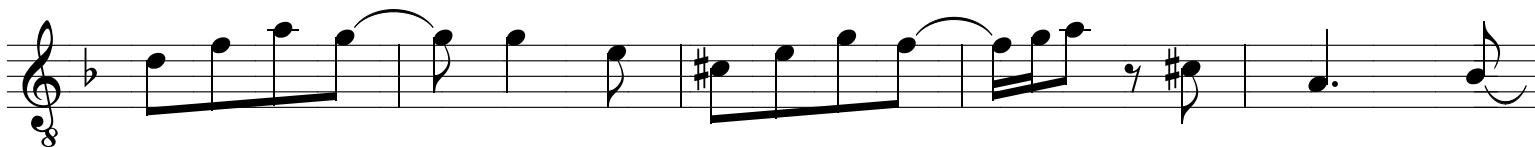
## FREVO

ORQUESTRA DE FREVO

de NUNES/Arr. DUDA



2º sax-tenor



# CABÊLO DE FÔGO

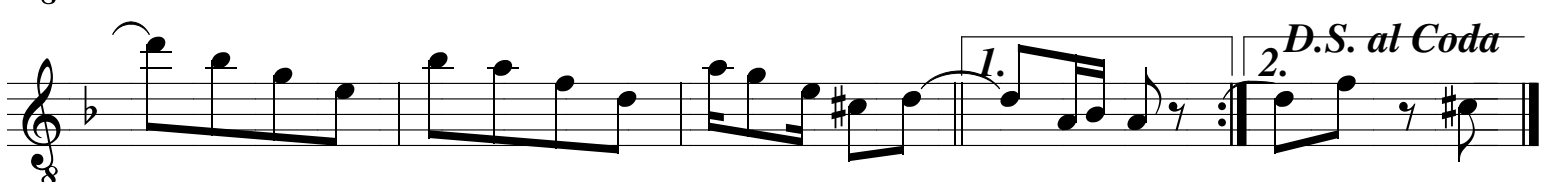
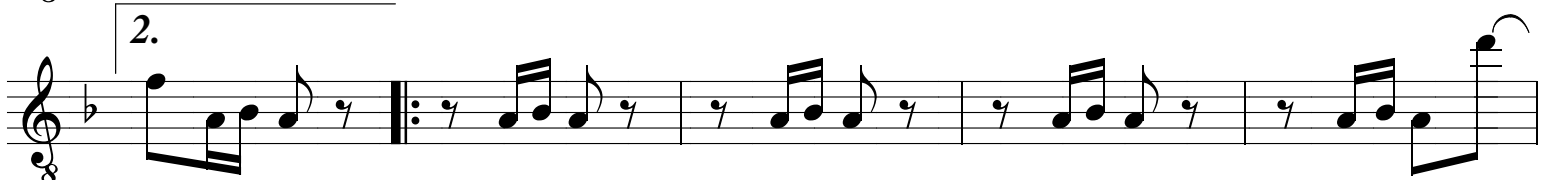
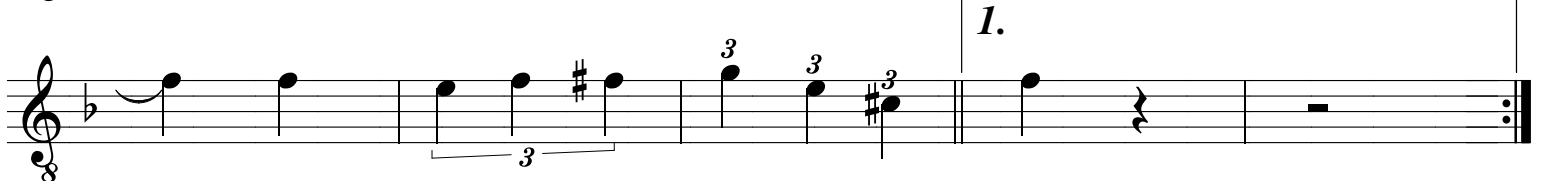
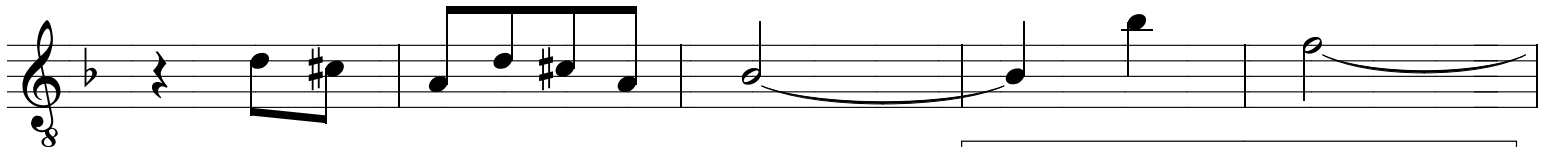
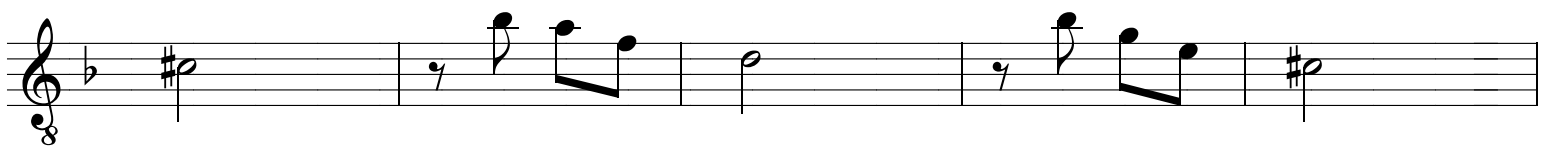
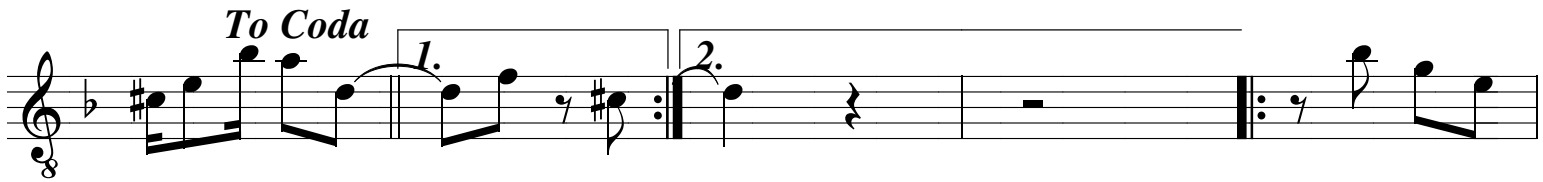
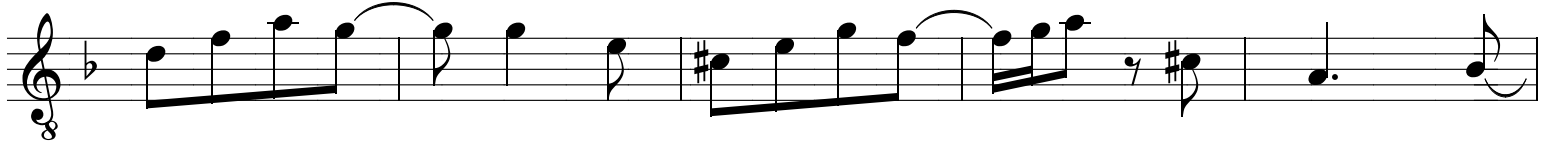
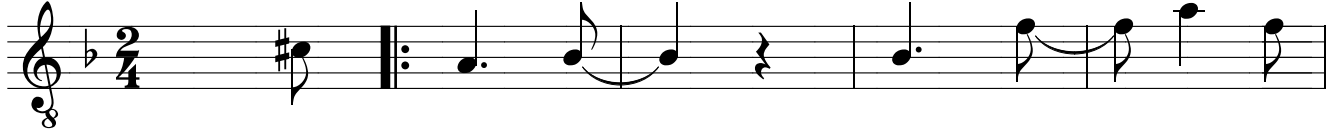
## FREVO

ORQUESTRA DE FREVO

de NUNES/Arr. DUDA



2º sax-tenor



⊕ Coda



# CABÊLO DE FÔGO

## FREVO

ORQUESTRA DE FREVO 

de NUNES/Arr. DUDA

sax-baritono 

*To Coda* 1. 2.

3. 3. 1.

2.

*D.S. al Coda* 1. 2.

 *Coda*



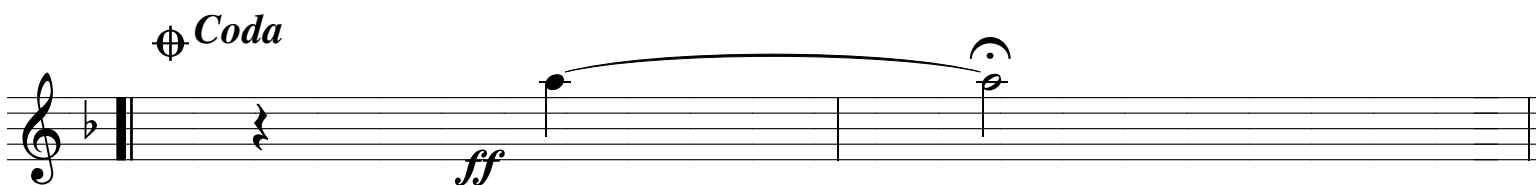
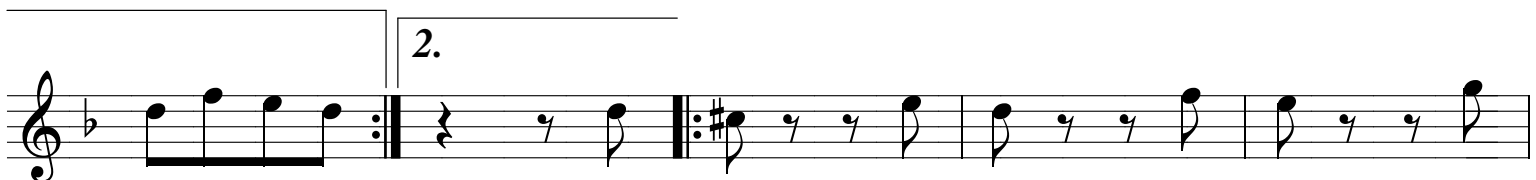
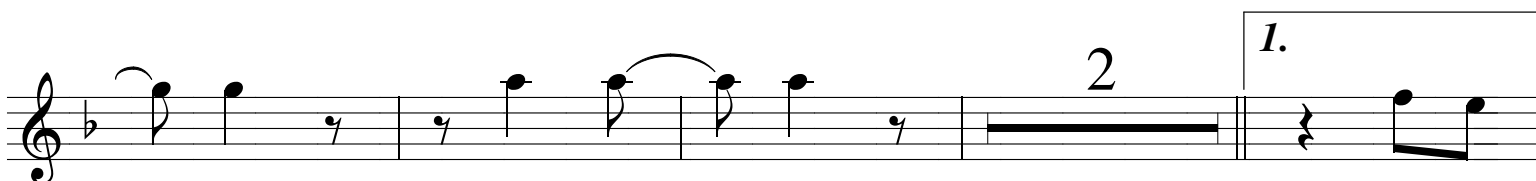
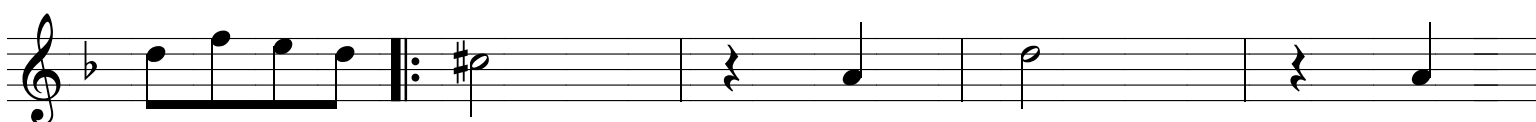
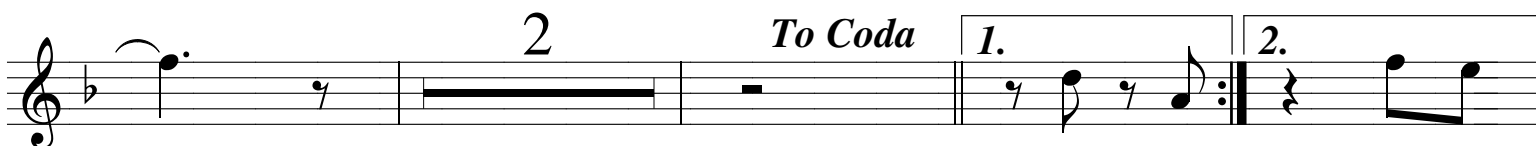
# CABÊLO DE FÔGO

## FREVO

ORQUESTRA DE FREVO



de NUNES/Arr. DUDA



# CABÊLO DE FÔGO

## FREVO

ORQUESTRA DE FREVO

de NUNES/Arr. DUDA

2º piston

3

2

To Coda

1.

2.

1.

2.

2.

3

1.

2. D.S. al Coda

⊕ Coda

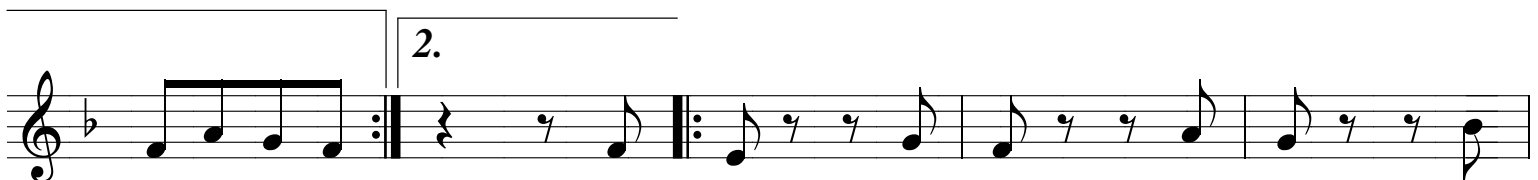
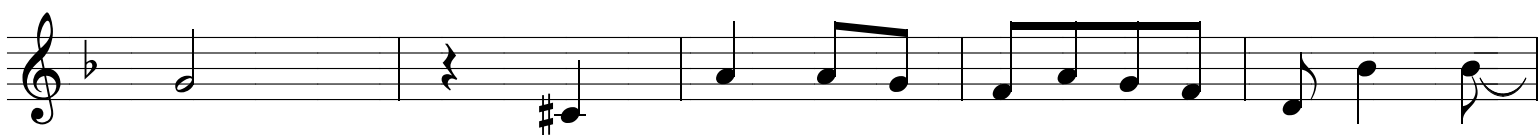
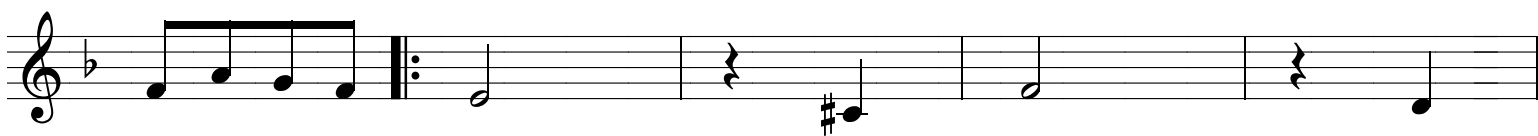
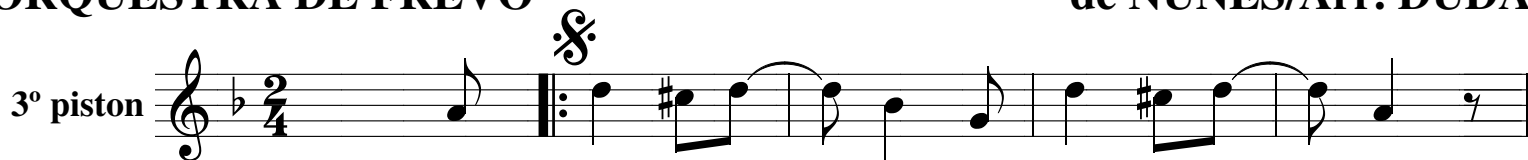
*ff*

# CABÊLO DE FÔGO

## FREVO

ORQUESTRA DE FREVO

de NUNES/Arr. DUDA



# CABÊLO DE FÔGO

## FREVO

ORQUESTRA DE FREVO

de NUNES/Arr. DUDA

1º trombone

The musical score for the 1st Trombone part is written in bass clef, key of B-flat major (two flats), and 2/4 time. It begins with a repeat sign and a key signature change to B-flat major. The score includes various musical notations such as eighth notes, quarter notes, and half notes, often beamed together. There are several first and second endings marked with '1.' and '2.'. A 'To Coda' instruction is present, leading to a Coda section. The Coda section starts with a Coda symbol and a key signature change to B-flat major, followed by a forte (ff) dynamic marking and a long, sustained note. The score concludes with a double bar line.

3

2

To Coda

1.

2.

1.

2.

2.

3

1.

2.

D.S. al Coda

⊕ Coda

*ff*



# CABÊLO DE FÔGO

## FREVO

ORQUESTRA DE FREVO

de NUNES/Arr. DUDA

2º trombone

3

2

*To Coda*

1.

2.

1.

2.

3

1.

2.

*D.S. al Coda*

$\oplus$  *Coda*

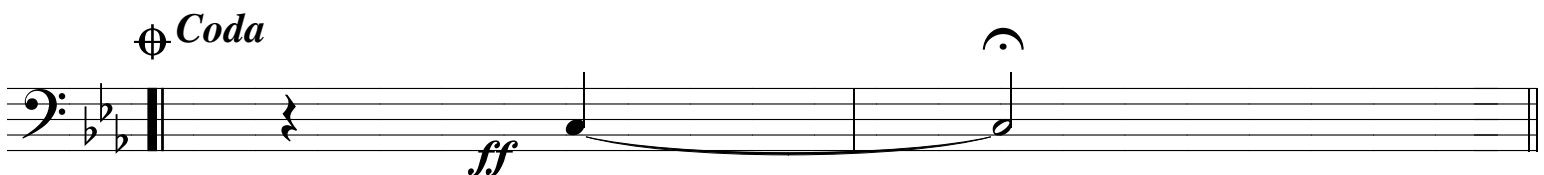
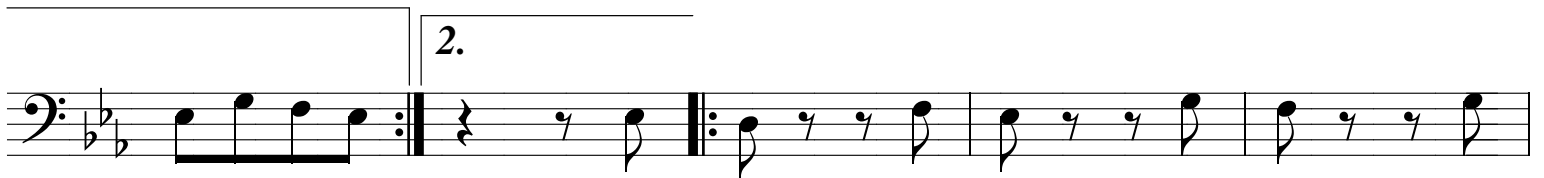
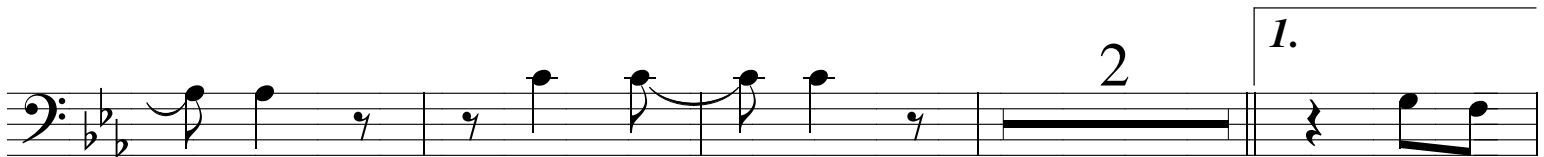
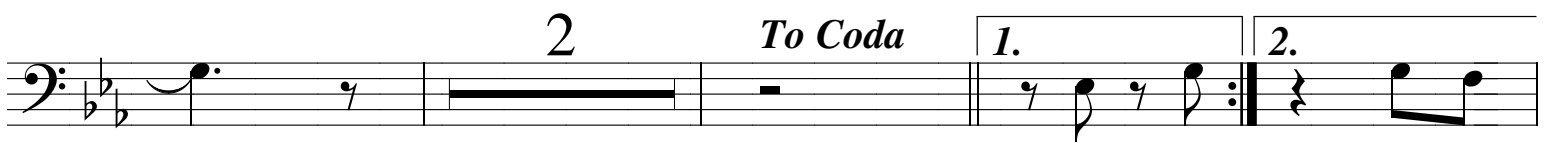
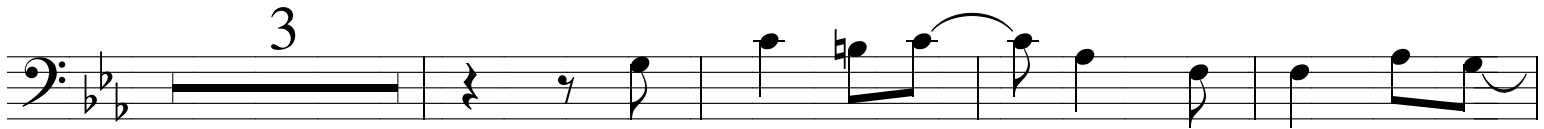
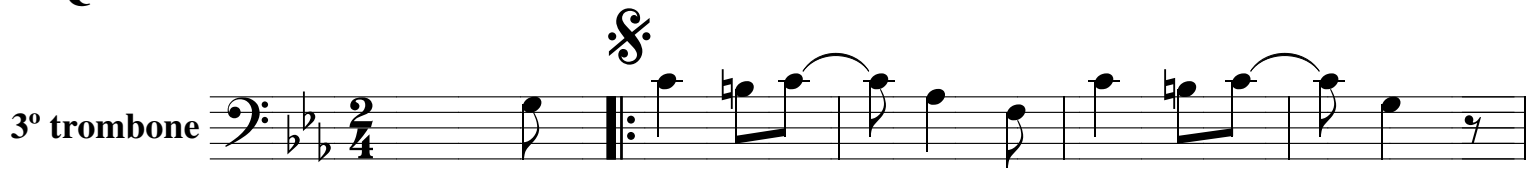
*ff*

# CABÊLO DE FÔGO

## FREVO

ORQUESTRA DE FREVO

de NUNES/Arr. DUDA



# CABÊLO DE FÔGO

## FREVO

ORQUESTRA DE FREVO

de NUNES/Arr. DUDA

c/baixo/base

Chord progression and musical notation for c/baixo/base:

Staff 1: G<sup>7</sup> Cm Fm<sup>6</sup> Fm<sup>6</sup> Cm

Staff 2: Cm G<sup>7</sup> G<sup>7</sup> Cm G<sup>7</sup> Cm

Staff 3: Fm<sup>6</sup> Fm<sup>6</sup> Cm Cm Fm/D

Staff 4: G<sup>7</sup> *To Coda* 1. Cm 2. Cm Cm B<sup>b</sup>7 A<sup>b</sup>7 G<sup>7</sup>

Staff 5: G<sup>7</sup> Cm Cm G<sup>7</sup> G<sup>7</sup>

Staff 6: Cm Cm Fm Fm Cm

Staff 7: Cm G<sup>7</sup> G<sup>7</sup> 1. Cm Cm B<sup>b</sup>7 A<sup>b</sup>7

Staff 8: 2. Cm A<sup>b</sup>7 G<sup>7</sup> Cm G<sup>7</sup> Cm<sup>7</sup>

Staff 9: Fm Cm G<sup>7</sup> 1. Cm A<sup>b</sup>7 2. *D.S. al Coda* Cm

Staff 10: Coda Cm<sup>9</sup> *ff*

# CABÊLO DE FÔGO

## FREVO

ORQUESTRA DE FREVO

de NUNES/Arr. DUDA

bateria/percussão

Segue/Ritmo

13

To Coda

1.

2.

RITMO-SEGUE

7

2

1.

2.

2.

3

1.

2.

D.S. al Coda

3

1.

2.

D.S. al Coda

⊕ Coda

ff

ff