

Suíte Recife

(Mida)

José Urcisino da Silva (Duda)

Trompete Bb

Piano

Measures 1-4 of the score. The Trompete Bb part is in treble clef with a key signature of one sharp (F#) and a 3/4 time signature. It contains whole rests in all four measures. The Piano part is in grand staff (treble and bass clefs) with a key signature of one flat (Bb) and a 3/4 time signature. Measures 1-4 show chords in the right hand and single notes in the left hand.

5

Measures 5-8 of the score. The Trompete Bb part continues with whole rests. The Piano part features more complex chords in the right hand and single notes in the left hand. Measure 8 includes a fermata over the right hand.

9

Measures 9-12 of the score. The Trompete Bb part begins with a melodic line starting in measure 10. The Piano part continues with chords and single notes. Measure 12 includes a fermata over the right hand.

13

Measures 13-16 of the score. The Trompete Bb part continues with a melodic line. The Piano part features a long note in the left hand in measure 13, followed by chords and single notes. Measure 16 includes a fermata over the right hand.

Continuação de Suíte Recífe (Mida)

Trompette Bb

Piano

21

Key signature: one sharp (F#). The score consists of three staves. The top staff is a single melodic line in treble clef. The bottom two staves are a piano accompaniment in grand staff (treble and bass clefs). The music is in 4/4 time. The first measure of the piano part features a half note in the bass and a half note in the treble. The melody in the top staff begins with a quarter note, followed by an eighth note, and then a quarter note. The piano part includes chords and single notes, with a final measure showing a whole note in the bass and a whole note in the treble.

[illegible]

26

Key signature: one sharp (F#). The score consists of three systems. The first system shows the vocal melody and piano accompaniment. The second system continues the melody and accompaniment. The third system shows the vocal melody and piano accompaniment. The piano part features a prominent bass line in the left hand and a more active right hand.

Continuação de Suíte Recife (Mida)

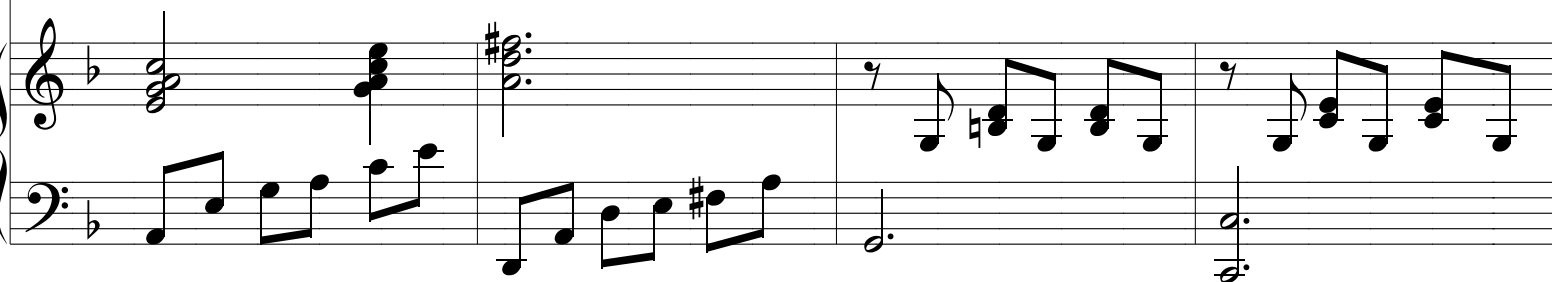
Trompete Bb



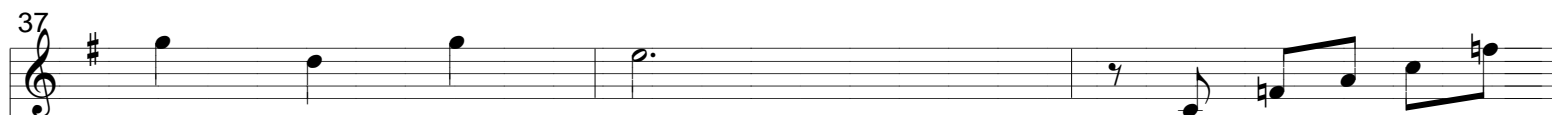
Piano



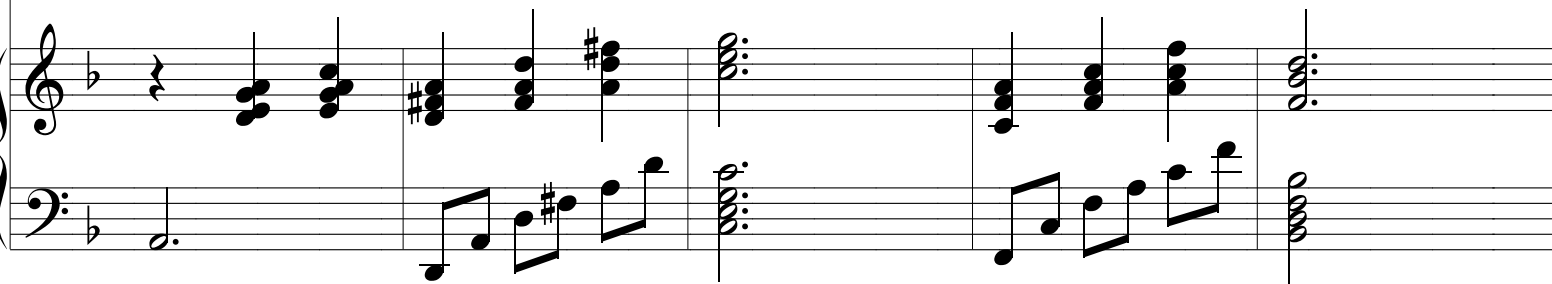
33



37



40



Continuação de Suíte Recife (Mida)

Trompete Bb

45

Piano

This system contains measures 45, 46, and 47. The Trompete Bb part (top staff) begins at measure 45 with a half note G4 (F#4 in key signature). In measure 46, there is a whole rest, followed by a quarter note G4, an eighth note F#4, and a quarter note E4. Measure 47 contains a half note D4. The Piano part (bottom staves) features chords in measures 45 and 46, and a melodic line in the bass staff in measure 45. Measures 46 and 47 contain sustained chords in both the treble and bass staves.

48

Fine

This system contains measures 48 and 49. In measure 48, the Trompete Bb part has a half note G4 (F#4) with a fermata. The Piano part has a complex chord in the treble staff and a melodic line in the bass staff. Measure 49 shows the Trompete Bb part with a half note G4 (F#4) and the Piano part with sustained chords in both staves. The system concludes with a double bar line.