

Suíte Recife

(Dorinha)

José Urcisino da Silva (Duda)

Trompete Bb

Piano

Measures 1-2 of the score. The Trompete Bb part is in G major (one sharp) and 4/4 time. It starts with a whole rest in measure 1, followed by a sixteenth rest, then a series of eighth and sixteenth notes in measure 2. The Piano part is in F major (two flats) and 4/4 time. It features chords in measure 1, a triplet of eighth notes in measure 2, and chords in measure 3.

Measures 3-4 of the score. The Trompete Bb part continues with eighth and sixteenth notes in measure 3, followed by a triplet of eighth notes and then quarter notes in measure 4. The Piano part has chords in measure 3 and measure 4.

Measures 5-8 of the score. The Trompete Bb part has a half note in measure 5, a quarter note in measure 6, and a half note in measure 7. Measure 8 is a whole note. The Piano part has chords in measure 5 and measure 6, and eighth notes in measure 7 and measure 8. The time signature changes to 2/4 in measure 7.

Measures 9-12 of the score. The Trompete Bb part has a half note in measure 9, a quarter note in measure 10, and a half note in measure 11. Measure 12 is a whole note. The Piano part has eighth notes in measure 9 and measure 10, and eighth notes in measure 11 and measure 12. The time signature changes to 2/4 in measure 11. A repeat sign is present at the end of measure 12.

Continuação de Suíte Recife (Dorinha)

Trompete Bb

13

Musical score for Trompete Bb and Piano, measures 13-16. The Trompete Bb part is in treble clef with a key signature of one sharp (F#). It begins with a half note G4, followed by a quarter note A4, then a quarter note B4, and a quarter note C5, all tied together. The Piano part is in treble and bass clefs with a key signature of one flat (Bb). The right hand plays a series of eighth notes: G4, A4, B4, C5, B4, A4, G4, F#4. The left hand plays a series of eighth notes: G3, A3, B3, C4, B3, A3, G3, F#3.

17

Musical score for Trompete Bb and Piano, measures 17-19. The Trompete Bb part continues with a half note G4, followed by a quarter note A4, then a quarter note B4, and a quarter note C5, all tied together. The Piano part continues with the same eighth note pattern as in measures 13-16.

20

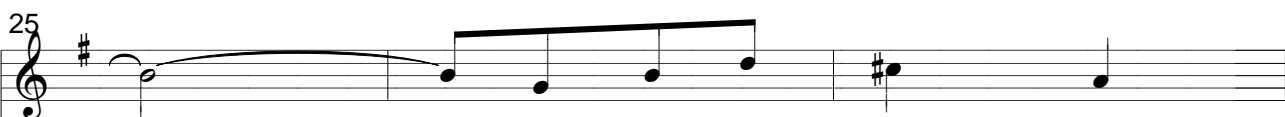
Musical score for Trompete Bb and Piano, measures 20-21. The Trompete Bb part continues with a half note G4, followed by a quarter note A4, then a quarter note B4, and a quarter note C5, all tied together. The Piano part continues with the same eighth note pattern as in measures 13-16.

22

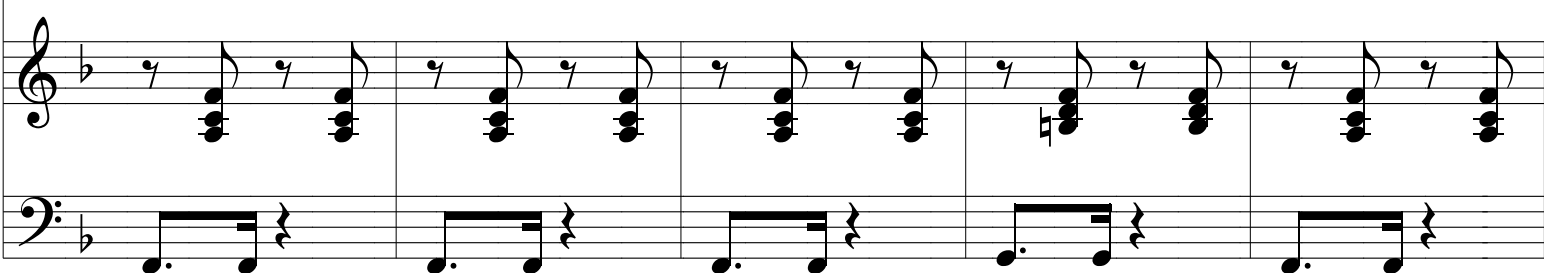
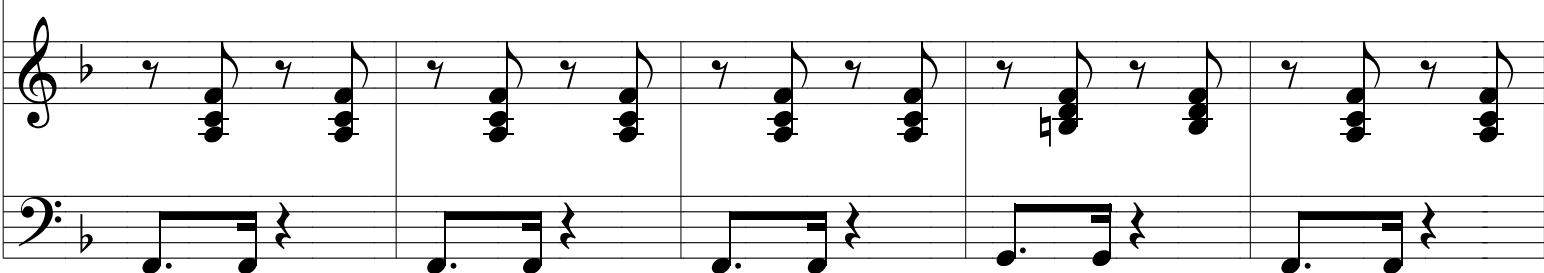
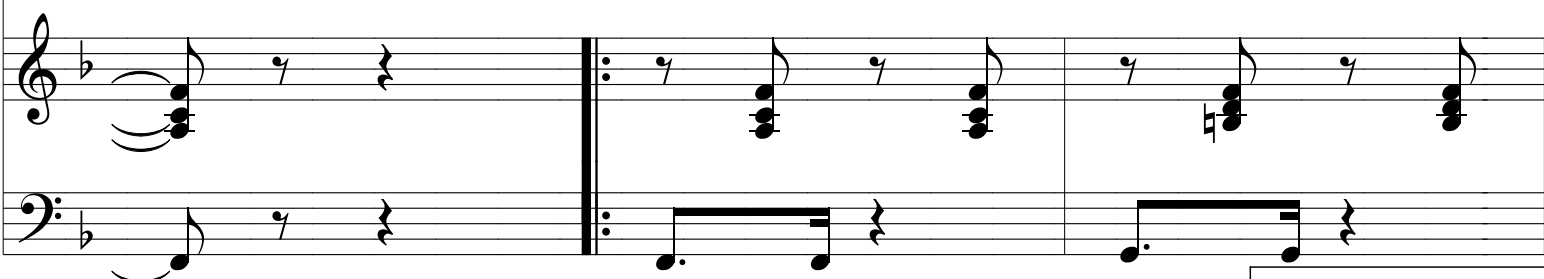
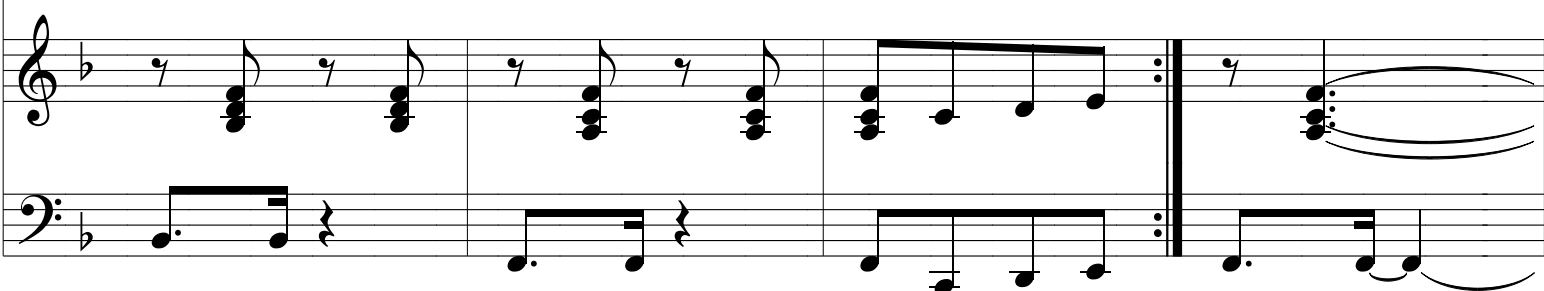
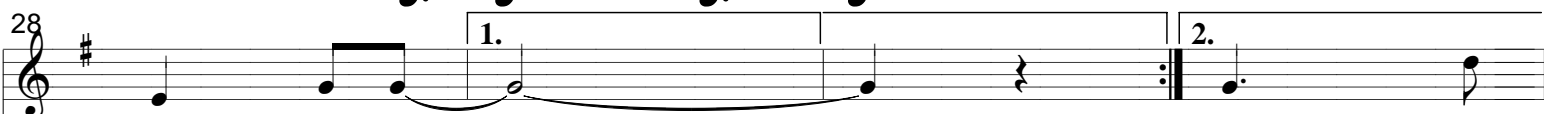
Musical score for Trompete Bb and Piano, measures 22-24. The Trompete Bb part continues with a half note G4, followed by a quarter note A4, then a quarter note B4, and a quarter note C5, all tied together. The Piano part continues with the same eighth note pattern as in measures 13-16.

Continuação de Suíte Recife (Dorinha)

Trompete Bb



Piano



To Coda

1.

Continuação de Suíte Recife (Dorinha)

Trompete Bb

40

2.

D.S. al Coda

Coda

Piano

45

Fine