

# NÃO PERCA TEMPO

Frevo de rua

Guedes Peixoto

Alto Sax. 1

Alto Sax. 2

Tenor Sax. 1

Tenor Sax. 2

Baritone Sax.

Trumpet in B♭ 1

Trumpet in B♭ 2

Trumpet in B♭ 3

Trombone 1

Trombone 2

Trombone 3

Trombone 4

Tuba

Percussion

Harmonia

RITMO

Dm7 Em7 G7 C6 C6 Dm7 G7 C6

NÃO PERCA TEMPO

[illegible]

17 2

A. Sx. 1

A. Sx. 2

T. Sx. 1

T. Sx. 2

B. Sx.

B $\flat$  Tpt. 1

B $\flat$  Tpt. 2

B $\flat$  Tpt. 3

Tbn. 1

Tbn. 2

Tbn. 3

Tbn. 4

Tuba

Perc.

RITMO

17 6 6 6 C6 C6 C6 Dm7 Em7 Dm7/G C6 C6 C6 Dm7

Harm.

Detailed description: This is a page of a musical score for the piece 'NÃO PERCA TEMPO'. The page is numbered 3 in the top right corner. The score is written for a large ensemble, including woodwinds, brass, percussion, and harmony. The woodwind section consists of two flutes (A. Sx. 1 and 2), two saxophones (T. Sx. 1 and 2), and a baritone saxophone (B. Sx.). The brass section includes three B-flat trumpets (B $\flat$  Tpt. 1, 2, 3), four tenor horns (Tbn. 1, 2, 3, 4), and a tuba. The percussion section includes a percussionist (Perc.) and a rhythm section (RITMO). The harmony section (Harm.) provides the harmonic foundation. The score is written in 4/4 time and features a key signature of one sharp (F#). The music is characterized by a strong rhythmic drive, with many notes beamed together in eighth and sixteenth notes. The woodwinds and brass play melodic lines, while the percussion and harmony provide a steady, rhythmic accompaniment. The score is divided into measures by vertical bar lines, and the measures are numbered 17 through 24. The woodwinds and brass parts have a '2' above the first measure, indicating a second ending or a specific articulation. The percussion part has a 'RITMO' label above the first measure, indicating a rhythmic pattern. The harmony part has a series of chord symbols above the first measure, indicating the harmonic progression.

# NÃO PERCA TEMPO

4

27

A. Sx. 1

A. Sx. 2

T. Sx. 1

T. Sx. 2

B. Sx.

B $\flat$  Tpt. 1

B $\flat$  Tpt. 2

B $\flat$  Tpt. 3

Tbn. 1

Tbn. 2

Tbn. 3

Tbn. 4

Tuba

Perc.

RITMO

27

F7 E7 Dm7/G C6 C6 Gm7 C7 F6 F6 F $\sharp$ dim C6/G C6/G C6 Dm7

Harm.

[illegible]

Alto Sax. 1

# NÃO PERCA TEMPO

Frevo de rua

Guedes Peixoto

§

6

12

To Coda

1.

2.

18

27

34

D.S. al Coda

1

2

42

©Erlson Oliveira

Alto Sax. 2

# NÃO PERCA TEMPO

Frevo de rua

Guedes Peixoto

6

12

To Coda

18

27

35

D.S. al Coda

42

# Tenor Sax. 1 **NÃO PERCA TEMPO**

Frevo de rua

Guedes Peixoto

§

6

12

To Coda

1.

17

2

25

34

D.S. al Coda

1

2

42

⊙



# NÃO PERCA TEMPO

Tenor Sax. 2

Frevo de rua

Guedes Peixoto

§

6

12

To Coda

18

26

33

D.S. al Coda

42

⊙

# NÃO PERCA TEMPO

Baritone Sax.

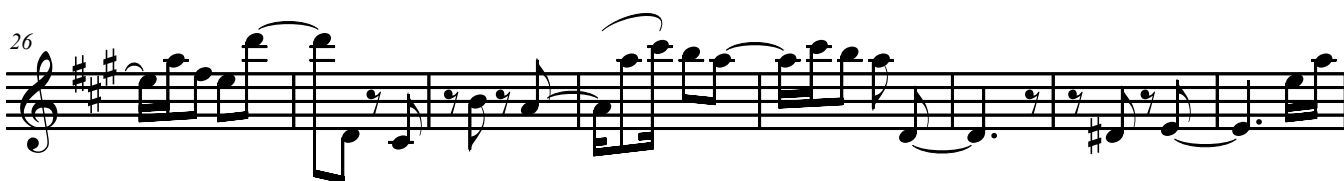
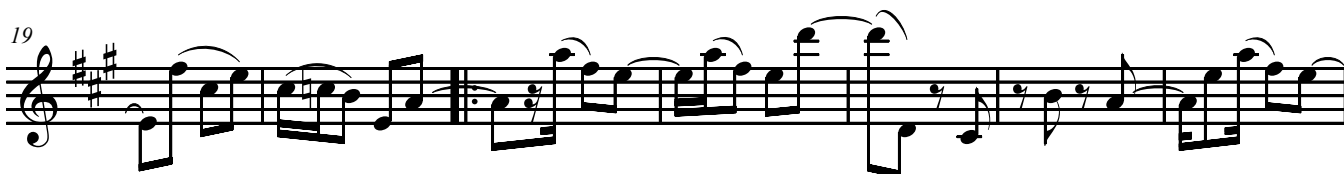
Frevo de rua

Guedes Peixoto

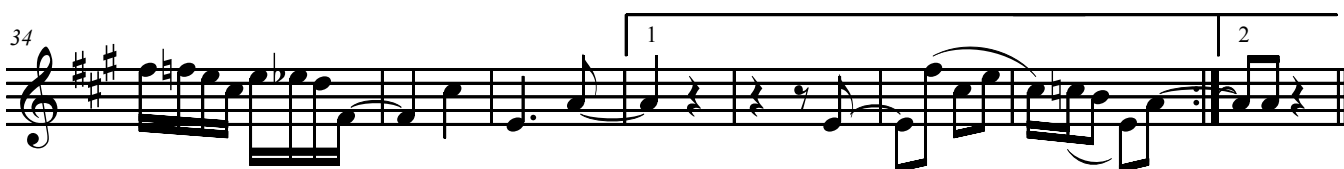
§



*To Coda*



*D.S. al Coda*



# NÃO PERCA TEMPO

Trumpet in B $\flat$  1

Frevo de rua

Guedes Peixoto

9

To Coda

16

1. 2.

2.

24

31

3. 1. 2.

D.S. al Coda

42

# NÃO PERCA TEMPO

Trumpet in B $\flat$  2

Frevo de rua

Guedes Peixoto

§

8

To Coda

15

1. 2.

23

30

3 1 2

D.S. al Coda

42

⊕

# NÃO PERCA TEMPO

Trumpet in B $\flat$  3

Frevo de rua

Guedes Peixoto

§

8

To Coda

15

1. 2.

23

31

3 1 2

D.S. al Coda

42

# Trombone 1 **NÃO PERCA TEMPO**

Frevo de rua

Guedes Peixoto

7

14 *To Coda*

22

29

37 *D.S. al Coda*

42

# Trombone 2 **NÃO PERCA TEMPO**

Frevo de rua

Guedes Peixoto

§

8

To Coda

1.

17

2

25

32

1

2

D.S. al Coda

42

Ø

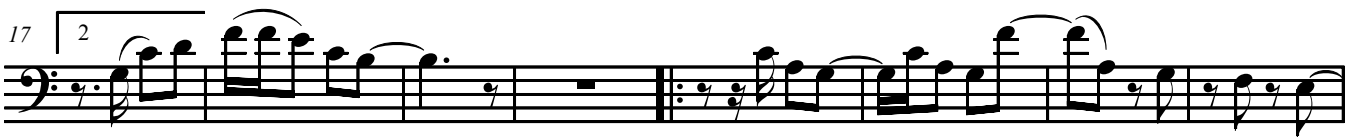
# Trombone 3 **NÃO PERCA TEMPO**

Frevo de rua

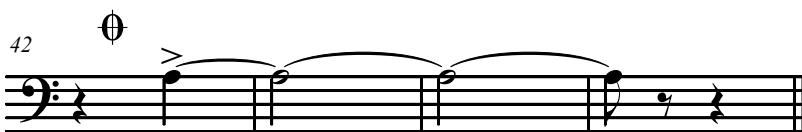
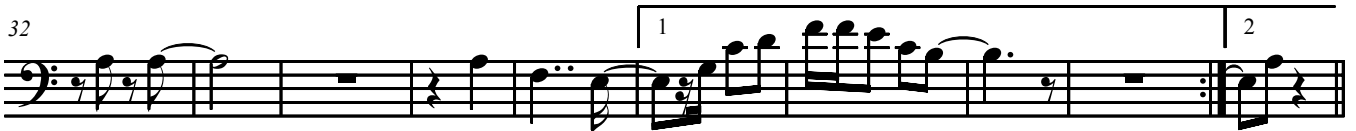
Guedes Peixoto



*To Coda*



*D.S. al Coda*





# Trombone 4 **NÃO PERCA TEMPO**

Frevo de rua

Guedes Peixoto

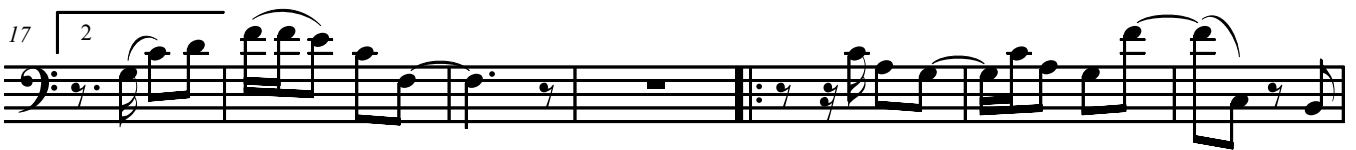


*To Coda*

8



17

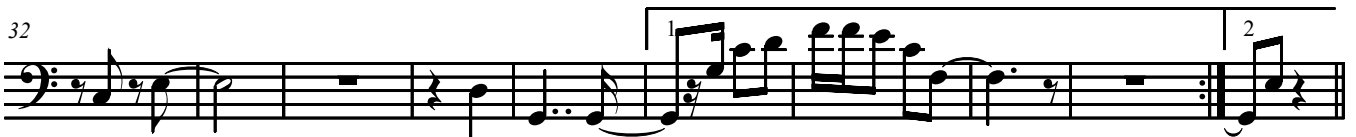


24

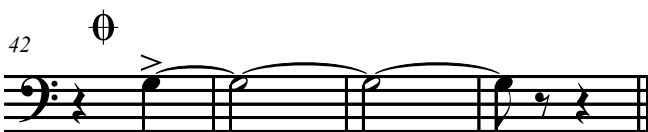


*D.S. al Coda*

32



42



Tuba

# NÃO PERCA TEMPO

Frevo de rua

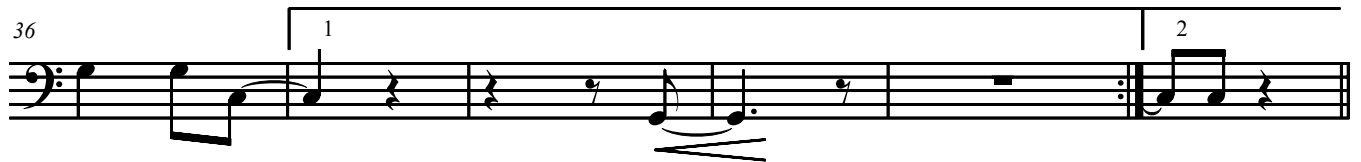
Guedes Peixoto



*To Coda*



*D.S. al Coda*



Harmonia **NÃO PERCA TEMPO**

## Frevo de rua

## Guedes Peixoto

Musical score for "The Sound of Silence" by Simon & Garfunkel. The score is written for guitar and bass. The guitar part is in the upper staff, and the bass part is in the lower staff. The key signature is one flat (B-flat), and the time signature is 4/4. The score includes chords and lyrics.

Chords and lyrics for the first system (measures 1-4):

- Measure 1: Chord: C6, Lyric: "Hello"
- Measure 2: Chord: Dm7, Lyric: "Goodbye"
- Measure 3: Chord: Em7, Lyric: "To the other side"
- Measure 4: Chord: G6, Lyric: "Of the world"

Chords and lyrics for the second system (measures 5-8):

- Measure 5: Chord: C6, Lyric: "Hello"
- Measure 6: Chord: Dm7, Lyric: "Goodbye"
- Measure 7: Chord: Em7, Lyric: "To the other side"
- Measure 8: Chord: G6, Lyric: "Of the world"

Chords and lyrics for the third system (measures 9-12):

- Measure 9: Chord: C6, Lyric: "Hello"
- Measure 10: Chord: Dm7, Lyric: "Goodbye"
- Measure 11: Chord: Em7, Lyric: "To the other side"
- Measure 12: Chord: G6, Lyric: "Of the world"

Chords and lyrics for the fourth system (measures 13-16):

- Measure 13: Chord: C6, Lyric: "Hello"
- Measure 14: Chord: Dm7, Lyric: "Goodbye"
- Measure 15: Chord: Em7, Lyric: "To the other side"
- Measure 16: Chord: G6, Lyric: "Of the world"

Chords and lyrics for the fifth system (measures 17-20):

- Measure 17: Chord: C6, Lyric: "Hello"
- Measure 18: Chord: Dm7, Lyric: "Goodbye"
- Measure 19: Chord: Em7, Lyric: "To the other side"
- Measure 20: Chord: G6, Lyric: "Of the world"

Chords and lyrics for the sixth system (measures 21-24):

- Measure 21: Chord: C6, Lyric: "Hello"
- Measure 22: Chord: Dm7, Lyric: "Goodbye"
- Measure 23: Chord: Em7, Lyric: "To the other side"
- Measure 24: Chord: G6, Lyric: "Of the world"

Chords and lyrics for the seventh system (measures 25-28):

- Measure 25: Chord: C6, Lyric: "Hello"
- Measure 26: Chord: Dm7, Lyric: "Goodbye"
- Measure 27: Chord: Em7, Lyric: "To the other side"
- Measure 28: Chord: G6, Lyric: "Of the world"

Chords and lyrics for the eighth system (measures 29-32):

- Measure 29: Chord: C6, Lyric: "Hello"
- Measure 30: Chord: Dm7, Lyric: "Goodbye"
- Measure 31: Chord: Em7, Lyric: "To the other side"
- Measure 32: Chord: G6, Lyric: "Of the world"

Chords and lyrics for the ninth system (measures 33-36):

- Measure 33: Chord: C6, Lyric: "Hello"
- Measure 34: Chord: Dm7, Lyric: "Goodbye"
- Measure 35: Chord: Em7, Lyric: "To the other side"
- Measure 36: Chord: G6, Lyric: "Of the world"

Chords and lyrics for the tenth system (measures 37-40):

- Measure 37: Chord: C6, Lyric: "Hello"
- Measure 38: Chord: Dm7, Lyric: "Goodbye"
- Measure 39: Chord: Em7, Lyric: "To the other side"
- Measure 40: Chord: G6, Lyric: "Of the world"

Chords and lyrics for the eleventh system (measures 41-44):

- Measure 41: Chord: C6, Lyric: "Hello"
- Measure 42: Chord: Dm7, Lyric: "Goodbye"
- Measure 43: Chord: Em7, Lyric: "To the other side"
- Measure 44: Chord: G6, Lyric: "Of the world"

Chords and lyrics for the twelfth system (measures 45-48):

- Measure 45: Chord: C6, Lyric: "Hello"
- Measure 46: Chord: Dm7, Lyric: "Goodbye"
- Measure 47: Chord: Em7, Lyric: "To the other side"
- Measure 48: Chord: G6, Lyric: "Of the world"

Chords and lyrics for the thirteenth system (measures 49-52):

- Measure 49: Chord: C6, Lyric: "Hello"
- Measure 50: Chord: Dm7, Lyric: "Goodbye"
- Measure 51: Chord: Em7, Lyric: "To the other side"
- Measure 52: Chord: G6, Lyric: "Of the world"

Chords and lyrics for the fourteenth system (measures 53-56):

- Measure 53: Chord: C6, Lyric: "Hello"
- Measure 54: Chord: Dm7, Lyric: "Goodbye"
- Measure 55: Chord: Em7, Lyric: "To the other side"
- Measure 56: Chord: G6, Lyric: "Of the world"

Chords and lyrics for the fifteenth system (measures 57-60):

- Measure 57: Chord: C6, Lyric: "Hello"
- Measure 58: Chord: Dm7, Lyric: "Goodbye"
- Measure 59: Chord: Em7, Lyric: "To the other side"
- Measure 60: Chord: G6, Lyric: "Of the world"

Chords and lyrics for the sixteenth system (measures 61-64):

- Measure 61: Chord: C6, Lyric: "Hello"
- Measure 62: Chord: Dm7, Lyric: "Goodbye"
- Measure 63: Chord: Em7, Lyric: "To the other side"
- Measure 64: Chord: G6, Lyric: "Of the world"

Chords and lyrics for the seventeenth system (measures 65-68):

- Measure 65: Chord: C6, Lyric: "Hello"
- Measure 66: Chord: Dm7, Lyric: "Goodbye"
- Measure 67: Chord: Em7, Lyric: "To the other side"
- Measure 68: Chord: G6, Lyric: "Of the world"

Chords and lyrics for the eighteenth system (measures 69-72):

- Measure 69: Chord: C6, Lyric: "Hello"
- Measure 70: Chord: Dm7, Lyric: "Goodbye"
- Measure 71: Chord: Em7, Lyric: "To the other side"
- Measure 72: Chord: G6, Lyric: "Of the world"

Chords and lyrics for the nineteenth system (measures 73-76):

- Measure 73: Chord: C6, Lyric: "Hello"
- Measure 74: Chord: Dm7, Lyric: "Goodbye"
- Measure 75: Chord: Em7, Lyric: "To the other side"
- Measure 76: Chord: G6, Lyric: "Of the world"

Chords and lyrics for the twentieth system (measures 77-80):

- Measure 77: Chord: C6, Lyric: "Hello"
- Measure 78: Chord: Dm7, Lyric: "Goodbye"
- Measure 79: Chord: Em7, Lyric: "To the other side"
- Measure 80: Chord: G6, Lyric: "Of the world"

Chords and lyrics for the twenty-first system (measures 81-84):

- Measure 81: Chord: C6, Lyric: "Hello"
- Measure 82: Chord: Dm7, Lyric: "Goodbye"
- Measure 83: Chord: Em7, Lyric: "To the other side"
- Measure 84: Chord: G6, Lyric: "Of the world"

Chords and lyrics for the twenty-second system (measures 85-88):

- Measure 85: Chord: C6, Lyric: "Hello"
- Measure 86: Chord: Dm7, Lyric: "Goodbye"
- Measure 87: Chord: Em7, Lyric: "To the other side"
- Measure 88: Chord: G6, Lyric: "Of the world"

Chords and lyrics for the twenty-third system (measures 89-92):

- Measure 89: Chord: C6, Lyric: "Hello"
- Measure 90: Chord: Dm7, Lyric: "Goodbye"
- Measure 91: Chord: Em7, Lyric: "To the other side"
- Measure 92: Chord: G6, Lyric: "Of the world"

Chords and lyrics for the twenty-fourth system (measures 93-96):

- Measure 93: Chord: C6, Lyric: "Hello"
- Measure 94: Chord: Dm7, Lyric: "Goodbye"
- Measure 95: Chord: Em7, Lyric: "To the other side"
- Measure 96: Chord: G6, Lyric: "Of the world"

Chords and lyrics for the twenty-fifth system (measures 97-100):

- Measure 97: Chord: C6, Lyric: "Hello"
- Measure 98: Chord: Dm7, Lyric: "Goodbye"
- Measure 99: Chord: Em7, Lyric: "To the other side"
- Measure 100: Chord: G6, Lyric: "Of the world"

Chords and lyrics for the twenty-sixth system (measures 101-104):

- Measure 101: Chord: C6, Lyric: "Hello"
- Measure 102: Chord: Dm7, Lyric: "Goodbye"
- Measure 103: Chord: Em7, Lyric: "To the other side"
- Measure 104: Chord: G6, Lyric: "Of the world"

Chords and lyrics for the twenty-seventh system (measures 105-108):

- Measure 105: Chord: C6, Lyric: "Hello"
- Measure 106: Chord: Dm7, Lyric: "Goodbye"
- Measure 107: Chord: Em7, Lyric: "To the other side"
- Measure 108: Chord: G6, Lyric: "Of the world"

Chords and lyrics for the twenty-eighth system (measures 109-112):

- Measure 109: Chord: C6, Lyric: "Hello"
- Measure 110: Chord: Dm7, Lyric: "Goodbye"
- Measure 111: Chord: Em7, Lyric: "To the other side"
- Measure 112: Chord: G6, Lyric: "Of the world"

Chords and lyrics for the twenty-ninth system (measures 113-116):

- Measure 113: Chord: C6, Lyric: "Hello"
- Measure 114: Chord: Dm7, Lyric: "Goodbye"
- Measure 115: Chord: Em7, Lyric: "To the other side"
- Measure 116: Chord: G6, Lyric: "Of the world"

Chords and lyrics for the thirtieth system (measures 117-120):

- Measure 117: Chord: C6, Lyric: "Hello"
- Measure 118: Chord: Dm7, Lyric: "Goodbye"
- Measure 119: Chord: Em7, Lyric: "To the other side"
- Measure 120: Chord: G6, Lyric: "Of the world"

Chords and lyrics for the thirty-first system (measures 121-124):

Percussion

# NÃO PERCA TEMPO

Frevo de rua

Guedes Peixoto

♩

RITMO 3

9

To Coda

RITMO 4

20

RITMO 11

RITMO 4

1

2

D.S. al Coda

42

⊕