

Bass B \flat

Bass B \flat

Mar de Rosas

$$5 \quad \boxed{\mathbf{A}}^f \mathbb{S}$$

Musical notation for the bass line of 'The Rose Tree'. The notation is on a single staff with a bass clef. It consists of four measures. The first measure contains a quarter note G2, an eighth rest, a quarter note F2, an eighth rest, a quarter note E2, and an eighth rest. The second measure contains a quarter note D2, an eighth rest, a quarter note C2, an eighth rest, a quarter note B1, and an eighth rest. The third measure contains a quarter note A1, an eighth rest, a quarter note G1, an eighth rest, a quarter note F1, and an eighth rest. The fourth measure contains a quarter note E1, an eighth rest, a quarter note D1, an eighth rest, a quarter note C1, and an eighth rest. The notation is in 2/4 time and is in the key of C major.

10

[illegible]

15

Musical notation for the bass line of 'The Rose Tree'. The notation is on a single staff with a bass clef. It consists of five measures. The first measure contains a half note G2, a quarter note A2, a quarter note B2, and a quarter note C3. The second measure contains a half note D2, a quarter note E2, a quarter note F2, and a quarter note G2. The third measure contains a half note A2, a quarter note B2, a quarter note C3, and a quarter note D3. The fourth measure contains a half note E2, a quarter note F2, a quarter note G2, and a quarter note A2. The fifth measure contains a half note B2, a quarter note C3, a quarter note D3, and a quarter note E3. The notation is in a simple, folk-like style with no accidentals.

20

[illegible]

26

26

1. 2.

Detailed description: This musical notation is for measure 26. It begins with a bass clef and a double bar line with a slash through it. The first part of the measure contains a quarter rest, followed by eighth notes G4, F4, E4, and D4. A first ending bracket spans the next two measures, which contain eighth notes D4, C4, B3, and A3, followed by a repeat sign. A second ending bracket spans the final two measures, which contain eighth notes G4, F4, E4, and D4, followed by a quarter note D4.

31

The bass line of 'The Rose Tree' is written on a single staff with a bass clef. It consists of three measures. The first measure contains four eighth notes: G2, F2, E2, and D2. The second measure contains four eighth notes: D2, C2, B1, and A1, with a flat symbol (b) placed above the B1 note. The third measure contains four eighth notes: G1, F1, E1, and D1. The notes are beamed in pairs.

34

34

Ao

38

[illegible]

44

Musical notation for the bass line of 'The Rose Tree'. The notation is on a single staff with a bass clef. It consists of six measures. The first measure contains four eighth notes: G2, F2, E2, and D2. The second measure contains four eighth notes: C2, B1, A1, and G1. The third measure contains a half note: F1. The fourth measure contains a half note: E1. The fifth measure contains a half note: D1. The sixth measure contains a half note: C1.

49

49 C



53

53 Pensando Nela

4

The musical notation is on a single staff with a bass clef. It begins with a key signature of one flat (B-flat) and a 4/4 time signature. The first measure contains a half note G2, a quarter note A2, a quarter note B-flat2, and a half note C3. This is followed by a double bar line with repeat dots. The second measure contains a half note D3, a quarter rest, a quarter note E3, and a half note F3. The third measure contains a half note G3, a quarter note A3, a quarter note B-flat3, and a half note C4. The fourth measure contains a half note D4, a quarter note E4, a quarter note F4, and a half note G4. The fifth measure contains a half note A4, a quarter note B-flat4, a quarter note C5, and a half note D5. The sixth measure contains a half note E5, a quarter note F5, a quarter note G5, and a half note A5. The seventh measure contains a half note B5, a quarter note C6, a quarter note D6, and a half note E6. The eighth measure contains a half note F6, a quarter note G6, a quarter note A6, and a half note B6. The piece ends with a double bar line and repeat dots.

Cont . Jovem guarda nº1

2

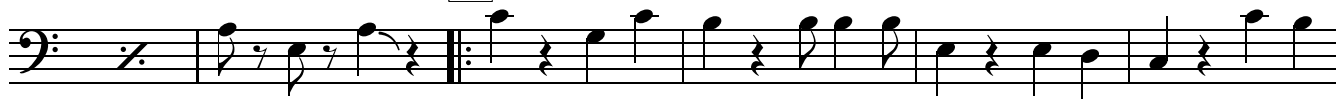
Bass Bb

58



64

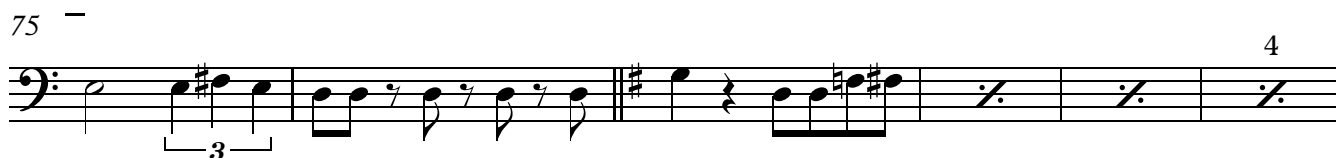
D



70



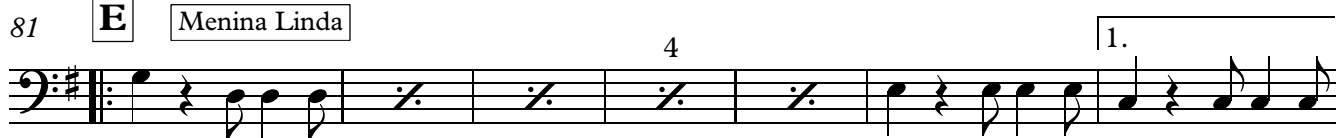
75



81

E

Menina Linda



88

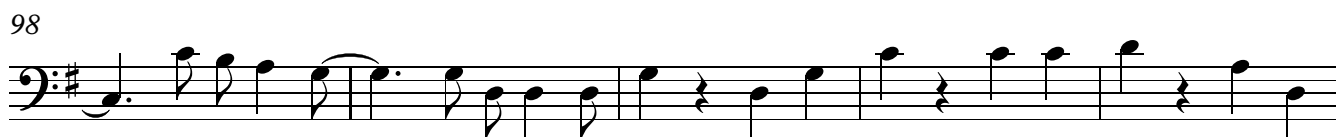


93

F



98



103



107

