

MARIA, MARIA

Alto Sax. 2

MILTON NASCIMENTO

Arranjo por Dico

Allegro $\text{♩} = 135$

A

B

C Clarinete

D Toca

E

F

6

12

17

28

33

39

45

50

f

mf

pp

p

mf

f

mp

mf



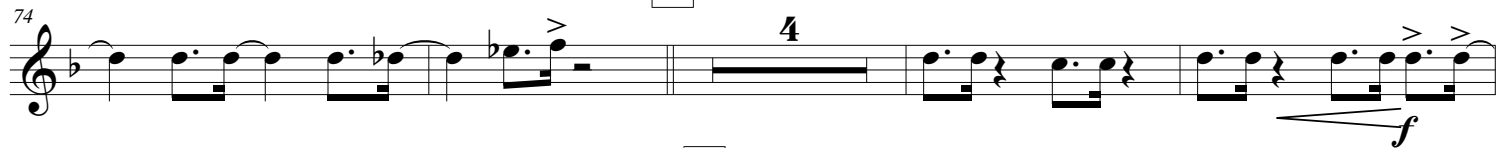
G



H



I



J



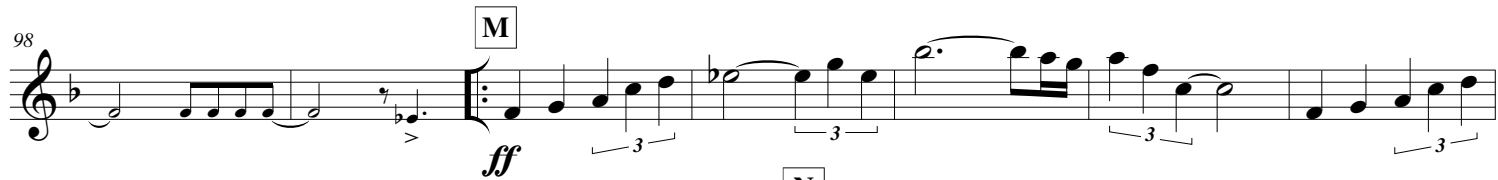
K

Trombone



L

Trombone



M

N



O



P



Q

