

SIBONEY

Score

Ernesto Lecuona
Arr: Rildon B. Sales

$\text{♩} = 100$

Flauta

Requinta

1 Clarinete B \flat

2 e 3 Clarinete B \flat

1 e 3 Sax Alto

2 e 4 Sax Tenor

Sax. Baritone

Trompete B \flat 1

Trompete B \flat 2e3

Trombone 1

Trombone 2e3

Euphonium

Tuba

Cowbell

Bongo Drums

Drum Set

Electric Guitar

Electric Bass

ff *mp* *f* *mp*

C_m G7 C_m Fm C_m G7 Fm

SIBONEY

2

[illegible]

SIBONEY

3

20

Fl.

Req.

B \flat Cl. 1

B \flat Cl. 2 e 3

A. Sx. 1e3

T. Sx.

B. Sx.

B \flat Tpt. 1

B \flat Tpt. 2e3

Tbn. 1

Tbn. 2e3

Euph.

Tuba

20

C. Bl.

20

Bgo. Dr.

D. S.

20

E.Gtr.

E.B.

pp

pp

pp

pp

pp

pp

pp

pp

p

p

G7 A \flat 7 G7 Fm G7 G7 Cm G7 Fm

Fl. *mf*

Req. *mf*

B♭ Cl. 1 *mf*

B♭ Cl. 2 e 3 *mf*

A. Sx. 1 e 3 *mf*

T. Sx. *mf*

B. Sx. *mf*

B♭ Tpt. 1 *mf*

B♭ Tpt. 2 e 3 *mf*

Tbn. 1

Tbn. 2 e 3

Euph.

Tuba

C. Bl. *C*

Bgo. Dr. *C*

D. S. *C*

E. Gtr. *C dim*

E. B.

38

Fl.

Req.

B \flat Cl. 1

B \flat Cl. 2 e 3

A. Sx. 1 e 3

T. Sx.

B. Sx.

B \flat Tpt. 1

B \flat Tpt. 2 e 3

Tbn. 1

Tbn. 2 e 3

Euph.

Tuba

C. Bl.

Bgo. Dr.

D. S.

E.Gtr.

E.B.

G7

46

Fl.

Req.

B♭ Cl. 1

B♭ Cl. 2 e 3

A. Sx. 1 e 3

T. Sx.

B. Sx.

B♭ Tpt. 1

B♭ Tpt. 2 e 3

Tbn. 1

Tbn. 2 e 3

Euph.

Tuba

46

C. Bl.

46

Bgo. Dr.

D. S.

46

E. Gtr.

E. B.

p

p

p

C

C

C dim

55

Fl.

Req.

B♭ Cl. 1

B♭ Cl. 2 e 3

A. Sx. 1e3

T. Sx.

B. Sx.

55

B♭ Tpt. 1

B♭ Tpt. 2e3

Tbn. 1

Tbn. 2e3

Euph.

Tuba

55

C. Bl.

55

Bgo. Dr.

D. S.

55

E.Gtr.

E.B.

G7

C

C

Fm

Cm

[illegible]

SIBONEY

Flauta

Ernesto Lecuona
Arr: Rildon B. Sales

$\text{♩} = 100$

ff *mp*

8 *p*

18 *p* *pp*

28 *mf* *mf*

36 3 3 4

46 3 3

53 *p*

63 1. 2. $\text{♩} = 100$ *mp*

Ao

SIBONEY

Requinta

Ernesto Lecuona
Arr: Rildon B. Sales

$\text{♩} = 100$

ff mp

9 p p

20 pp mf

31 5 3 3

40 3 3 4 3 3

49 tr 3

58 p 1.

67 mp Ao ff ff

$\text{♩} = 100$ 2.

11/2010

SIBONEY

1 Clarinete B \flat

Ernesto Lecuona
Arr: Rildon B. Sales

$\text{♩} = 100$

ff *mp*

9 *p* *p*

20 *pp* 2

30 *mf* 5

39 3 3 3 3 4 3 3

48 3 *ff*

57 *p*

66 1. 2. $\text{♩} = 100$ *mp* Ao

SIBONEY

2 Clarinete B \flat

Ernesto Lecuona
Arr: Rildon B. Sales

$\text{♩} = 100$

ff *mp*

8 *p*

18 *p* *pp*

28 *mf* 2 5

39 3 3 4 3 3

47 3

55 *p*

65 1. 2. $\text{♩} = 100$ *mp* Ao

SIBONEY

3 Clarinete B \flat

Ernesto Lecuona
Arr: Rildon B. Sales

$\text{♩} = 100$ $\text{S}\%$ Ø

ff *mp*

8 *p*

18 *p* *pp*

28 2 *mf* 5

39 3 3 3 3 4 3 3

47 3

55 *p*

65 1. 2. $\text{♩} = 100$ *mp* Ao $\text{S}\%$ Ø

SIBONEY

Sax Soprano

Ernesto Lecuona
Arr: Rildon B. Sales

$\text{♩} = 100$

ff *mp*

9 *p* *p*

20 *pp* *mf*

31 *mf*

38 3 4 3 3

48 3

57 *p*

66 1. 2. $\text{♩} = 100$ *mp* Ao $\text{S}\&$ \emptyset

SIBONEY

1 Sax Alto

Ernesto Lecuona
Arr: Rildon B. Sales

♩ = 100

ff mp

9 p mf

20 pp

28 mf

39 3 3 4 3 3

47

54 mf

64 1. 2. mp

11/2010

SIBONEY

3 Sax Alto

Ernesto Lecuona
Arr: Rildon B. Sales

$\text{♩} = 100$ Sax C

ff *mp*

9 *p* *mf*

20 *pp*

28 *mf* 2 5

39 3 3 3 3 4 3 3

47

54 *mf* 3

64 1. 2. $\text{♩} = 100$ Sax C

SIBONEY

2 Sax Tenor

Ernesto Lecuona
Arr: Rildon B. Sales

$\text{♩} = 100$ $\text{S}\&$ \emptyset

ff *mp*

8 *p* *mf*

18 *pp*

27 $\text{S}\&$ 6

39 3 3 4 3 3

47 3

55 *mf* 3

64 1. 2. $\text{S}\&$ \emptyset *mp* *ff*

SIBONEY

4 Sax Tenor

Ernesto Lecuona
Arr: Rildon B. Sales

$\text{♩} = 100$ $\text{S}\&$ Ø

ff *mp*

8 *p* *mf*

18 *pp*

27 *<* 6

39 3 3 3 3 4 3 3

47 3

55 *mf* 3

64 1. 2. $\text{♩} = 100$ *mp* *ff* Ao $\text{S}\&$ Ø

SIBONEY

Sax. Baritone

Ernesto Lecuona
Arr: Rildon B. Sales

$\text{♩} = 100$ $\text{S}\&$ \emptyset

ff *mp*

8 *mf*

18 3 3

27

35

45

55 *mf* 3

64 1. 2. $\text{♩} = 100$ *ff* Ao $\text{S}\&$ \emptyset

SIBONEY

Trompete B \flat 1

Ernesto Lecuona
Arr: Rildon B. Sales

$\text{♩} = 100$ S Ø 5

ff

11 *mp*

20 *pp*

28 5 *mf* 3

40 2

49 *p* *mf* 2

58 5 1. 2. $\text{♩} = 100$ *ff* Ao S

Ø

SIBONEY

Trompete B \flat 2

Ernesto Lecuona
Arr: Rildon B. Sales

$\text{♩} = 100$ $\text{S}\%$ O

ff

11 *mp*

20 *pp*

28 *mf*

40 *p* *mf*

49 *p* *mf*

58 *ff*

O

$\text{Ao S}\%$

SIBONEY

Trompete B \flat 3

Ernesto Lecuona
Arr: Rildon B. Sales

$\text{♩} = 100$ $\text{S}\%$ \emptyset 5

ff

11 *mp*

20 *pp*

28 5 *mf* 3

40 2

49 2 *p* *mf*

58 5 1. 2. $\text{♩} = 100$ *ff* Ao $\text{S}\%$

\emptyset

SIBONEY

Trombone 1

Ernesto Lecuona
Arr: Rildon B. Sales

♩ = 100

ff

11

mp

20

28

43

p

52

mf

64

1. 2.

♩ = 100

ff

Ao

SIBONEY

Trombone 2

Ernesto Lecuona
Arr: Rildon B. Sales

$\text{♩} = 100$

ff

11

mp

20

28

43

p

52

mf

64

1. $\text{♩} = 100$ 2.

ff

Ao $\text{S}\&$ O

SIBONEY

Trombone 3

Ernesto Lecuona
Arr: Rildon B. Sales

♩ = 100 § ϕ

ff

11

mp

20

28

43

p

52

mf

64

1. 2. ♩ = 100

ff

Ao § ϕ

SIBONEY

Euphonium

Ernesto Lecuona
Arr: Rildon B. Sales

$\text{♩} = 100$

ff *mp*

8

mp

16

25

33

50

p *mf*

58

ff

$\text{♩} = 100$

1. 2.

Ao %

SIBONEY

Tuba Bb

Ernesto Lecuona
Arr: Rildon B. Sales

$\text{♩} = 100$ S Ø

f

9

19

p

29

38

48

58

1.

68

$\text{♩} = 100$
2.

Ao & S Ø

SIBONEY

Tuba

Ernesto Lecuona
Arr: Rildon B. Sales

♩ = 100



9



18



27



36



46



56



Ao



SIBONEY

Tuba Eb

Ernesto Lecuona
Arr: Rildon B. Sales

♩ = 100

§

 Θ [illegible]

9

A single staff of music in bass clef, showing the bass line of the song. The melody consists of eighth and quarter notes, with a key signature of one sharp (F#) indicated by a sharp sign on the F line.

19

The bass line of 'The Rose Tree' is written in 2/4 time. It begins with a C2 note, followed by a C3 note, then a G2 note. The melody continues with a C3 note, a G2 note, and a C3 note. The piece concludes with a C3 note, a G2 note, and a C3 note. The notation includes a key signature of one flat (Bb) and a time signature of 2/4.

29

The bass line of 'The Rose Tree' is written on a single staff in bass clef. It begins with a G2 note, followed by a G2-A2-B2 triplet. This is followed by another G2-A2-B2 triplet, and then a G2-A2-B2 triplet. After a double bar line, the key signature changes to two sharps (F# and C#). The melody continues with an A3-B3-C#4 triplet, followed by an A3-B3-C#4 triplet, and then an A3-B3-C#4 triplet. The piece concludes with a G3-A3-B3 triplet.

39

48

The bass line of 'The Rose Tree' is written in G major (one sharp) and 2/4 time. It consists of 12 measures. The first six measures are: G2 (quarter), A2-B2 (eighths), C3 (quarter), D3-E3 (eighths), F3 (quarter), G3 (quarter). The next six measures are: A3-B3 (eighths), C4 (quarter), D4-E4 (eighths), F4 (quarter), G4 (quarter), A4-B4 (eighths), C5 (quarter), D5 (quarter), E5 (quarter), F5 (quarter), G5 (quarter), A5-B5 (eighths), C6 (quarter), D6 (quarter), E6 (quarter), F6 (quarter).

58

Musical notation for the bass line of 'The Rose Tree'. The key signature is one sharp (F#) and the time signature is 2/4. The melody consists of eighth and quarter notes, ending with a repeat sign.

 = 100

68

2.

The bass line of the song is written on a five-line staff with a bass clef. It consists of a single note, a half note G2, which is positioned on the second line from the bottom.

Ao & §

 \emptyset Φ

SIBONEY

Electric Bass

Ernesto Lecuona
Arr: Rildon B. Sales

$\text{♩} = 100$ C C

9

19

29

38

48

58

68

C C C

Ao & C C

SIBONEY

Electric Guitar

Ernesto Lecuona
Arr: Rildon B. Sales

♩ = 100

C_m G7 C $_m$ \emptyset F $_m$ C $_m$ G7 F $_m$

f *mp*

10 C $_m$ C $_m$ F $_m$ C $_m$ G7 F $_m$ C $_m$ C $_m$ G7 A \flat 7 G7 A \flat 7

22 G7 F $_m$ G7 G7 2 C $_m$ G7 F $_m$ C

33 C C dim

44 C C C dim

55 G7 C C F $_m$ C $_m$

65 G7 F $_m$ C $_m$ 2. \emptyset A_o C_m \emptyset

♩ = 100

SIBONEY

Bongo Drums

Ernesto Lecuona
Arr: Rildon B. Sales

♩ = 100 % Ø

2

8

15

22

30

37

44

52

59

66

1. 2. = 100 Ø

Ao % Ø

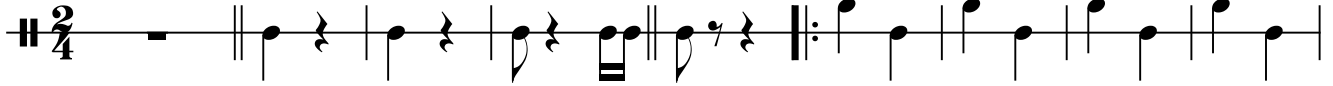
SIBONEY

Cowbell

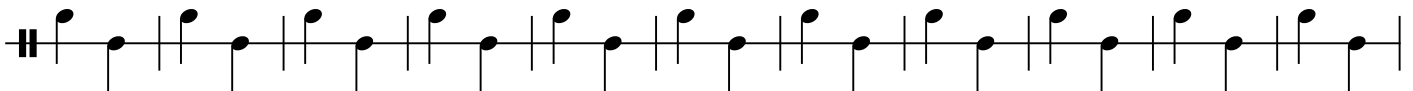
Ernesto Lecuona

Arr: Rildon B. Sales

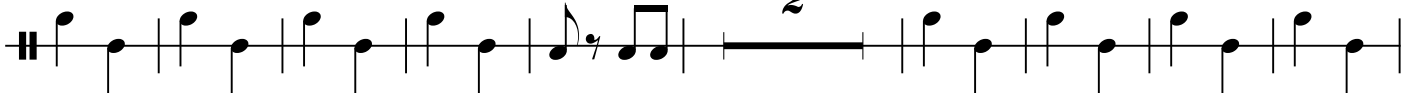
♩ = 100



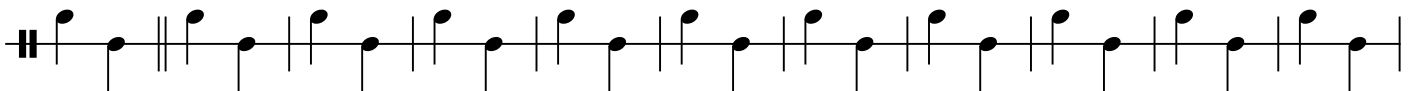
10



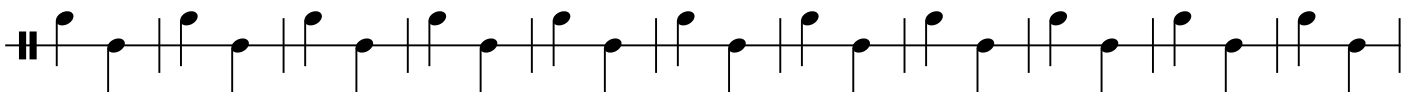
21



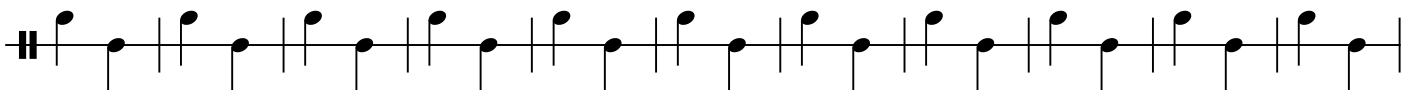
32



43



54



65



SIBONEY

Drum Set

Ernesto Lecuona
Arr: Rildon B. Sales

♩ = 100

8

14

20

27

33

39

45

51

57

63

1. 2.

Ao S & Ø

2
70

Φ

SIBONEY

