

Qui nem jiló

Arr: Antonio Nadson

Luiz Gonzaga

♩ = 75 ♩ = 105

Clarinet Bb

Clarinet Bb

Saxophone Soprano

Saxophone Alto

Saxophone Tenor

Trompete Bb

Trompete Bb

Trombone

mp

Trombone

mp

Tuba

8

Cl. Bb

Cl. Bb

Sax. Sop.

A. Sax

Sax. Tn.

Tpt. Bb

Tpt. Bb

Tbn.

Tbn.

Tba.

mp

mp

mp

mf

mf

mp

mp

||

Cl. Bb

Cl. Bb

Sax. Sop.

A. Sax

Sax. Tn.

Tpt. Bb

Tpt. Bb

Tbn.

Tbn.

Tba.

mf

mf

mp

mp

mp

mp

mp

Detailed description of the musical score: The score is for measures 14 through 19. Measure 14 begins with a key signature change to one sharp (F#). The Clarinet Bb parts play a melody starting on G4. The Saxophone Soprano and Alto Saxophone parts play a melody starting on G4. The Saxophone Tenor part plays a melody starting on G4. The Trumpet Bb parts play a melody starting on G4. The Trombone parts play a melody starting on G4. The Tuba part plays a melody starting on G4. The dynamic marking *mf* (mezzo-forte) is present in measures 14, 15, and 16. The dynamic marking *mp* (mezzo-piano) is present in measures 17, 18, and 19. The key signature changes to two flats (Bb, Eb) in measure 15 for the Trombone and Tuba parts.

21

This musical score page contains measures 21 through 24 of the piece 'The Rose Tree'. The score is written for a large ensemble, including two Clarinets in B-flat (Cl. Bb), a Soprano Saxophone (Sax. Sop.), an Alto Saxophone (A. Sax), a Tenor Saxophone (Sax. Tn.), two Trombones in B-flat (Tpt. Bb), two Trombones (Tbn.), and a Tuba (Tba.). The music is in 2/4 time and features a key signature of one flat (B-flat major or D minor). The melody is primarily carried by the woodwinds and upper brass, with the tuba providing a steady bass line. Dynamics such as *mp* (mezzo-piano) and *mf* (mezzo-forte) are indicated throughout the score. The notation includes various musical symbols such as notes, rests, beams, and articulation marks.

Cl. Bb

Cl. Bb

Sax. Sop.

A. Sax

Sax. Tn.

Tpt. Bb

Tpt. Bb

Tbn.

Tbn.

Tba.

Cl. Bb

Cl. Bb

Sax. Sop.

A. Sax

Sax. Tn.

Tpt. Bb

Tpt. Bb

Tbn.

Tbn.

Tba.

mf

mf

mp

mp

Detailed description of the musical score: The score is for measures 27 through 33. The key signature has one flat (Bb). The time signature is 4/4. The instruments are arranged in a standard jazz ensemble format. Measures 27-30: The Clarinet Bb and Saxophone Tenor play a melodic line starting on G4, moving up stepwise to A4, Bb4, and C5. The Saxophone Soprano and Alto Saxophone play a harmonic line, mostly on whole notes. The Trumpet Bb and Trombone play a harmonic line, mostly on whole notes. The Tuba plays a rhythmic accompaniment of eighth notes. Measures 31-33: The Clarinet Bb and Saxophone Tenor continue their melodic line. The Saxophone Soprano and Alto Saxophone play a harmonic line. The Trumpet Bb and Trombone play a harmonic line. The Tuba continues its rhythmic accompaniment. Dynamics include *mf* (measures 31-33) and *mp* (measures 31-33).

Cl. Bb

Cl. Bb

Sax. Sop.

A. Sax

Sax. Tn.

Tpt. Bb

Tpt. Bb

Tbn.

Tbn.

Tba.

mp

mp

mf

mf

mf

mp

mp

mp

mp

Detailed description: This page of a musical score contains measures 34 and 35. The instrumentation includes two Clarinets in Bb, Soprano Saxophone, Alto Saxophone, Tenor Saxophone, two Trumpets in Bb, two Trombones, and a Tuba. Measures 34 and 35 are marked with a repeat sign. The woodwinds (Clarinets, Saxophones) play sustained notes, while the brass (Trumpets, Trombones, Tuba) play a rhythmic pattern of eighth and sixteenth notes. Dynamic markings include *mp* (mezzo-piano) and *mf* (mezzo-forte).

Cl. Bb

Cl. Bb

Sax. Sop.

A. Sax

Sax. Tn.

Tpt. Bb

Tpt. Bb

Tbn.

Tbn.

Tba.

Measures 41-46 of the musical score. The score includes parts for Clarinet Bb (2 staves), Saxophone Soprano, Alto Saxophone, Saxophone Tenor, Trumpet Bb (2 staves), Trombone (2 staves), and Tuba. Measures 41-46 show various musical notations including rests, eighth notes, quarter notes, and triplets. The Alto Saxophone and Saxophone Tenor parts feature a key signature change to one sharp (F#) in measure 42. The Trombone and Tuba parts include triplet markings in measures 45 and 46.

To Coda

47

Cl. Bb

Cl. Bb

Sax. Sop.

A. Sax

Sax. Tn.

Tpt. Bb

Tpt. Bb

Tbn.

Tbn.

Tba.

mp

mp

mp

Detailed description: This musical score page contains measures 47 through 52. The instrumentation includes two Clarinets in Bb, Saxophone Soprano, Alto Saxophone, Saxophone Tenor, two Trumpets in Bb, two Trombones, and Tubas. Measures 47-51 feature woodwinds and strings with various melodic and harmonic patterns. In measure 52, the woodwinds and strings play a final phrase, while the brass instruments (Tpt. Bb, Tbn., and Tba.) play a sustained chord marked with the dynamic *mp* (mezzo-piano). The score concludes with a double bar line.

Cl. Bb

Cl. Bb

Sax. Sop.

A. Sax

Sax. Tn.

Tpt. Bb

Tpt. Bb

Tbn.

Tbn.

Tba.

mf

mf

mf

Cl. Bb

Cl. Bb

Sax. Sop.

A. Sax

Sax. Tn.

Tpt. Bb

Tpt. Bb

Tbn.

Tbn. *mp*

Tba. *mp mp*

Detailed description: This page of a musical score contains measures 60 through 67. The instrumentation includes two Bb Clarinets, a Soprano Saxophone, an Alto Saxophone, a Tenor Saxophone, two Bb Trumpets, three Tenor Trombones, and a Tuba. Measures 60-61 feature a woodwind and brass entry with eighth-note patterns. Measures 62-67 continue with various rhythmic patterns, including eighth-note runs, quarter notes, and half notes. The Alto Saxophone and Tuba have melodic lines with slurs and ties. The Tenor Trombones and Tenor Saxophone have sustained notes. The Soprano Saxophone is silent. The score concludes with a double bar line and a Coda symbol.

Cl. Bb

Cl. Bb

Sax. Sop.

A. Sax

Sax. Tn.

Tpt. Bb

Tpt. Bb

Tbn.

Tbn.

Tba.

mf

mf

mf

Cl. Bb

Cl. Bb

Sax. Sop.

A. Sax *mf*

Sax. Tn. *mf*

Tpt. Bb *mf*

Tpt. Bb

Tbn.

Tbn.

Tba.

Detailed description: This page of a musical score contains measures 75 through 79. The instrumentation includes two Bb Clarinets, a Soprano Saxophone, an Alto Saxophone, a Tenor Saxophone, two Bb Trumpets, two Tenor Trombones, and a Tuba. The Alto Saxophone, Tenor Saxophone, and first Bb Trumpet parts include a mezzo-forte (*mf*) dynamic marking. The score features various musical notations: whole notes, eighth notes, sixteenth notes, and sixteenth rests. Slurs are used to group sixteenth-note passages in measures 76 and 78. The key signature has one flat (Bb), and the time signature is 4/4. The page number 75 is located at the top left.

Clarinet Bb 1

Qui nem jiló

Arr: Antonio Nadson

Luiz Gonzaga

♩ = 75

♩ = 105

10

mf

22

mp

35

To Coda

11

mp

60

D.S. al Coda

69

Φ

Clarineta Bb 2

Qui nem jiló

Arr: Antonio Nadson

Luiz Gonzaga

$\text{♩} = 75$ $\text{♩} = 105$ %

10

mf

22

mp

35

mp 11 To Coda

60

D.S. al Coda

69

⊕

Saxofone Soprano

Qui nem jiló

Arr: Antonio Nadson

Luiz Gonzaga

♩ = 75 6 ♩ = 105 %

mp *mf*

17 *mp*

28 *mf*

43 To Coda

54 8 D.S. al Coda *mf*

72 *mf*

Saxofone Alto

Qui nem jiló

Arr: Antonio Nadson

Luiz Gonzaga

♩ = 75

♩ = 105

mp

14 *mp* *mp*

32 *mf*

46 To Coda *mf*

57 D.S. al Coda

70 *mf* *mf*

Saxofone Tenor

Qui nem jiló

Arr: Antonio Nadson

Luiz Gonzaga

♩ = 75 6 ♩ = 105 %

mp

17 *mp* *mp*

31 *mf*

44 *mf* To Coda

53 *mf* 8 D.S. al Coda

70 *mf* *mf*

Trompete Bb 1

Qui nem jiló

Arr: Antonio Nadson

Luiz Gonzaga

♩ = 75

♩ = 105 %

mf

10

6

mf *mp*

27

mf

40

To Coda

11

mp *mp*

61

D.S. al Coda

69

Trompete Bb 2

Qui nem jiló

Arr: Antonio Nadson

Luiz Gonzaga

♩ = 75

♩ = 105

mf

1

10

6

mf

mp

11

26

mf

16

38

To Coda

11

mp

mp

29

60

D.S. al Coda

39

69

70

Trombone 1

Qui nem jiló

Arr: Antonio Nadson

Luiz Gonzaga

♩ = 75

mp

♩ = 105

mp

12

mp

mf

27

mp

mp

44

To Coda

mp

58

mp

D.S. al Coda

69

⌘

Trombone 2

Qui nem jiló

Arr: Antonio Nadson

Luiz Gonzaga

♩ = 75

♩ = 105

mp

mp

13

mp

mf

28

5

mp

mp

44

To Coda

3

58

mp mp

D.S. al Coda

69

Φ

Tuba

Qui nem jiló

Arr: Antonio Nadson

Luiz Gonzaga

%

♩ = 75

♩ = 105



10



19



28



37



46

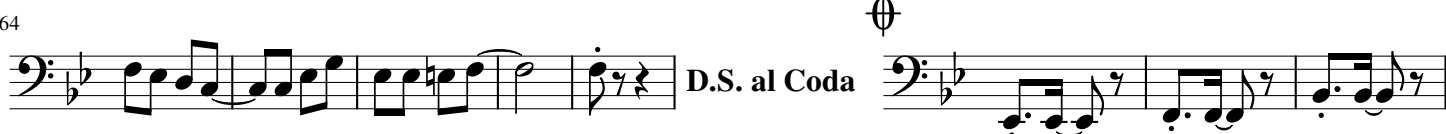
To Coda



55



64



72

