

DOBRADO

$\text{♩} = 110$

25

Fl.

Cl.

Cl.

Cl.

Sax. al.

Sax. ten.

Tr.

Tr.

Tr.

Tp.te.

Tp.te.

Tp.te.

Tr.ne.

Tr.ne.

Tr.ne.

Euf.

Sousa.

Cx./tr.

B.

Pr.

1.

2.

38

Fl.

Cl.

Cl.

Cl.

Sax. al.

Sax. ten.

Tr.

Tr.

Tr.

Tpte.

Tpte.

Tpte.

Trne.

Trne.

Trne.

Euf.

Sousa.

Cx./tr.

B.

Pr.

1.

2.

62

Fl.

Cl.

Cl.

Cl.

Sax. al.

Sax. ten.

Tr.

Tr.

Tr.

Tpte.

Tpte.

Tpte.

Trne.

Trne.

Trne.

Euf.

Sousa.

Cx./tr.

B.

Pr.

1.

2.

pp

pp

pp

Flauta

ANTÔNIO DA SILVA FERNANDES

DOBRADO

Rafael M. Henrique

$\text{♩} = 110$

ff

7

12

p

20

29

36

42

49

52

64

1. 2.

1. 2.

2. 2. tr~ 2. tr~ 2.

1. 2.

ANTÔNIO DA SILVA FERNANDES

1. Clarinete em Sib

DOBRADO

Rafael M. Henrique

$\text{♩} = 110$

ff

7

12

p

20

29

1. 2.

36

42

49

1. 2.

52

2 2 *tr* 2 *tr* 2

64

1. 2.

ANTÔNIO DA SILVA FERNANDES

2. Clarinete em Sib

DOBRADO

Rafael M. Henrique

$\text{♩} = 110$

ff

7

12

p

20

29

1. 2.

36

42

49

1. 2.

52

2 2 *tr* 2 *tr* 2

64

1. 2.

ANTÔNIO DA SILVA FERNANDES

3. Clarinete em Sib

DOBRADO

Rafael M. Henrique

$\text{♩} = 110$

ff

7

12

p

20

29

1. 2.

36

42

49

1. 2.

52

2 2 *tr* 2 *tr* 2

64

1. 2.

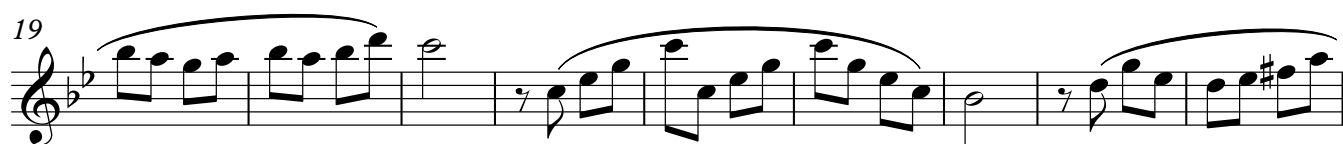
ANTÔNIO DA SILVA FERNANDES

Saxofone alto

DOBRADO

Rafael M. Henrique

♩ = 110



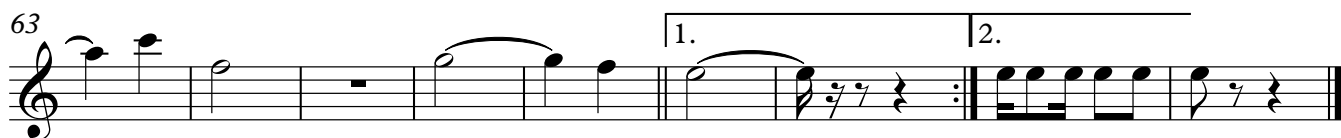
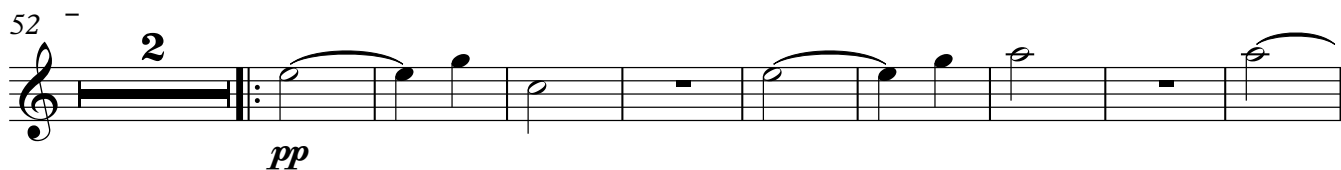
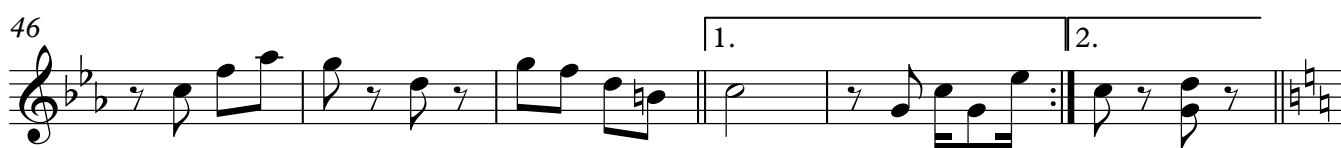
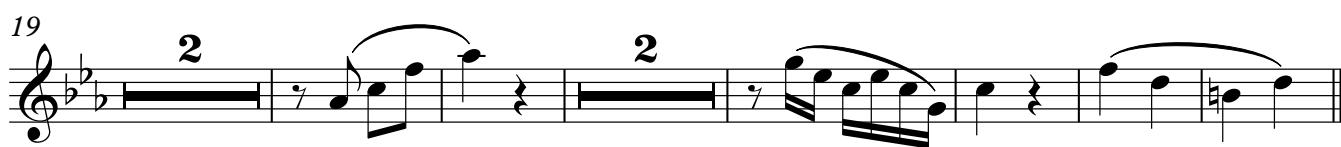
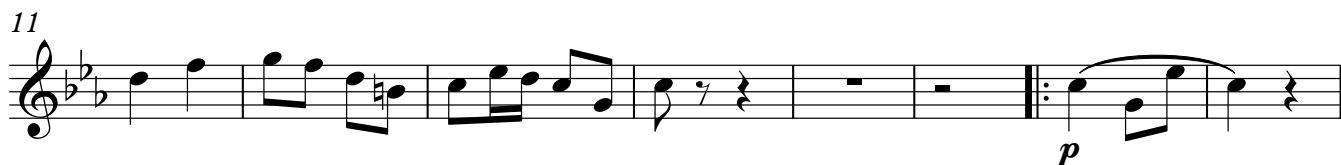
ANTÔNIO DA SILVA FERNANDES

Saxofone tenor

DOBRADO

Rafael M. Henrique

♩ = 110



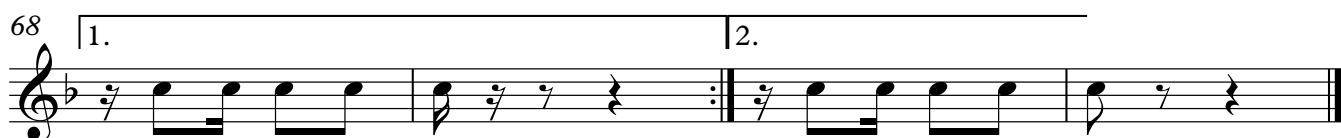
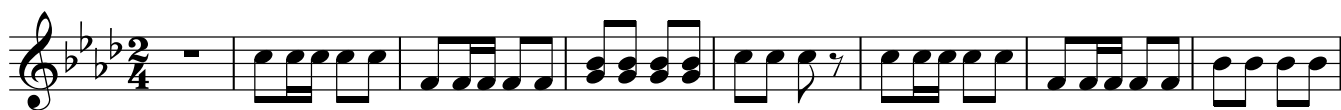
ANTÔNIO DA SILVA FERNANDES

1. Trompa em Fá

DOBRADO

Rafael M. Henrique

$\text{♩} = 110$



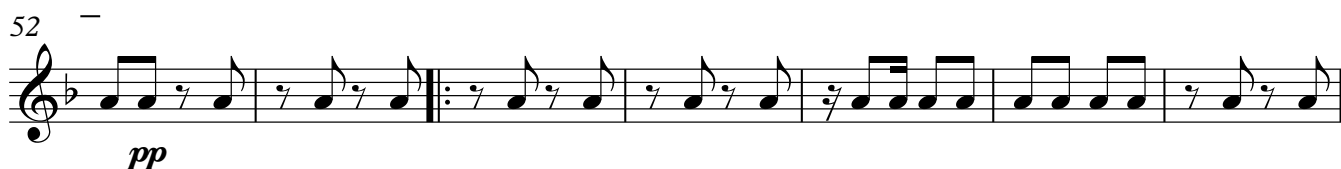
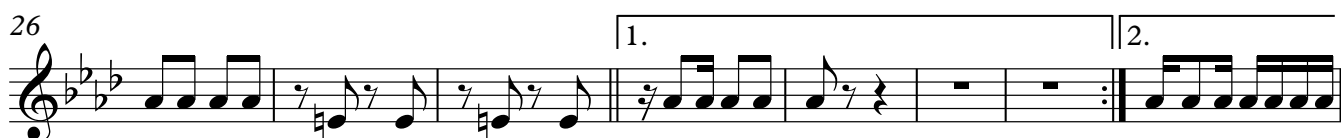
ANTÔNIO DA SILVA FERNANDES

2. Trompa em Fá

DOBRADO

Rafael M. Henrique

$\text{♩} = 110$



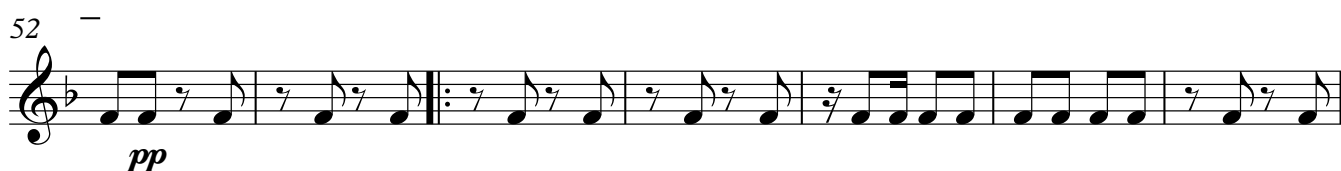
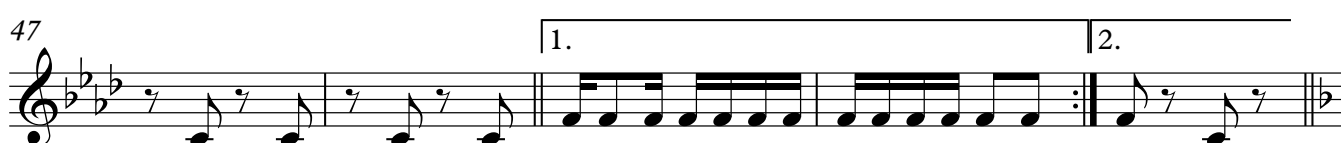
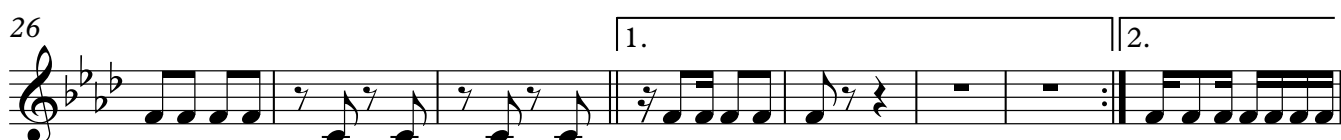
ANTÔNIO DA SILVA FERNANDES

3. Trompa em Fá

DOBRADO

Rafael M. Henrique

$\text{♩} = 110$



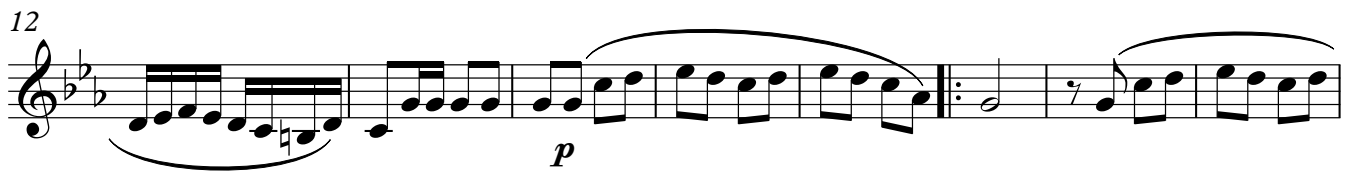
ANTÔNIO DA SILVA FERNANDES

1. Trompete em Sib

DOBRADO

Rafael M. Henrique

$\text{♩} = 110$



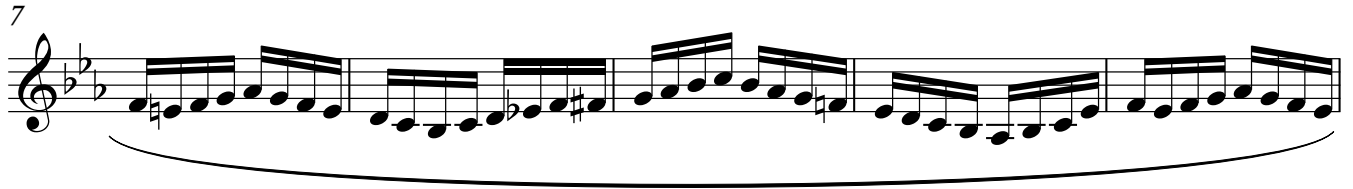
ANTÔNIO DA SILVA FERNANDES

2. Trompete em Sib

DOBRADO

Rafael M. Henrique

♩ = 110



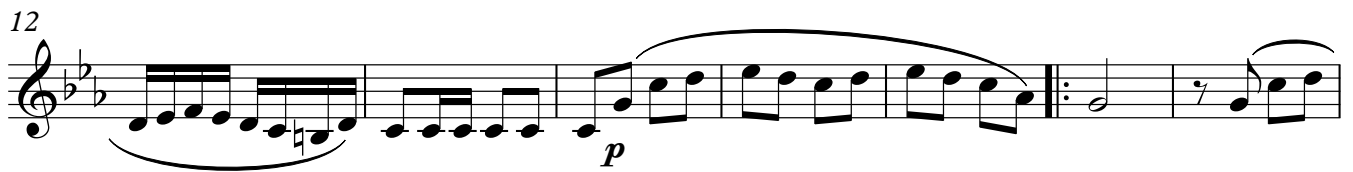
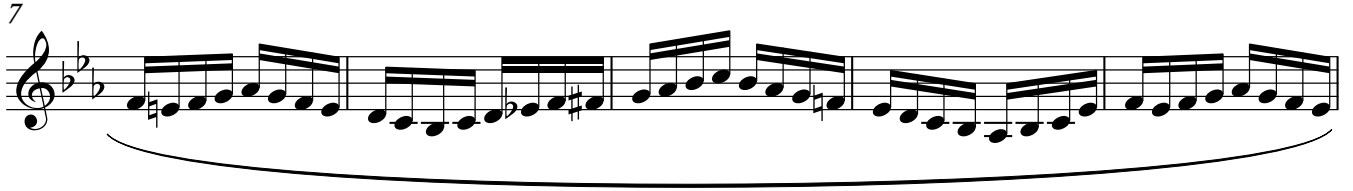
ANTÔNIO DA SILVA FERNANDES

3. Trompete em Sib

DOBRADO

Rafael M. Henrique

$\text{♩} = 110$



1. Trombone tenor

Rafael M. Henrique

♩ = 110

The image shows a musical score for the bass line of 'The Girl on the Train'. It is written on a single staff in bass clef, with a key signature of three flats (B-flat, E-flat, A-flat) and a time signature of 2/4. The tempo is marked as ♩ = 110. The music begins with a rest for one measure, followed by a series of eighth and quarter notes, some with accents. A dynamic marking of *f* (forte) is placed below the first measure of the main melodic line. The piece concludes with a final whole note chord.

[illegible]

29 

38

38

45

1. 2.

52 
pp

[illegible]

68

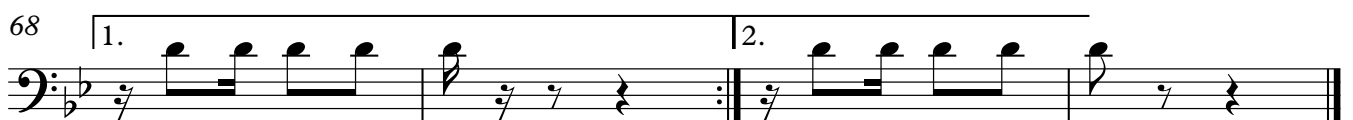
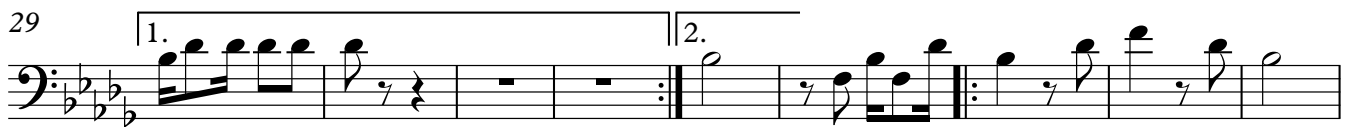
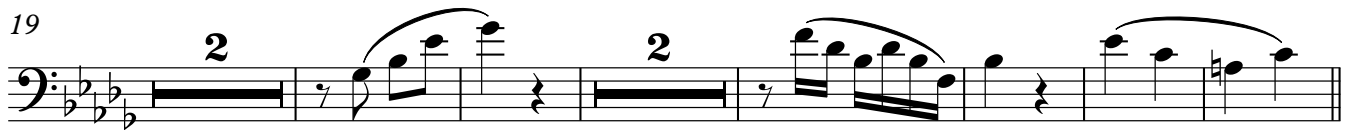
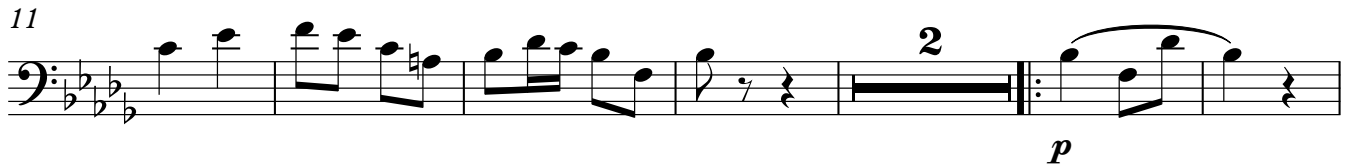
ANTÔNIO DA SILVA FERNANDES

2. Trombone tenor

DOBRADO

Rafael M. Henrique

$\text{♩} = 110$



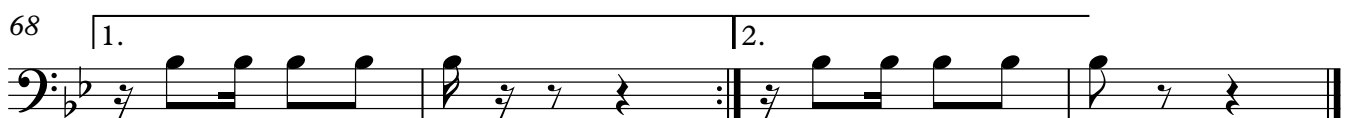
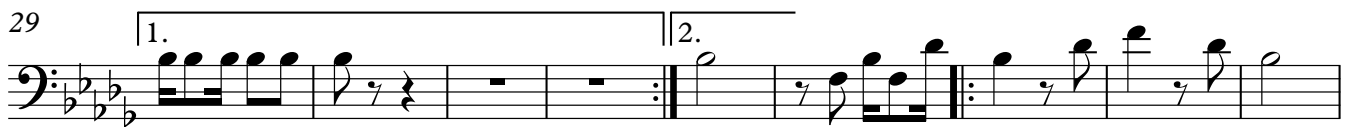
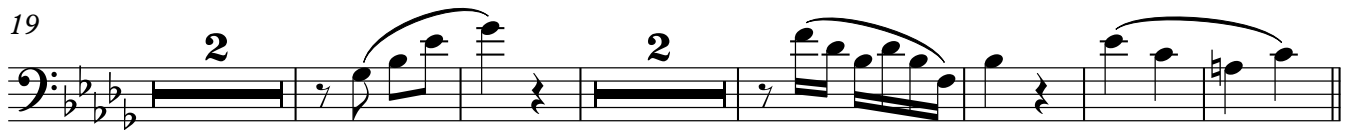
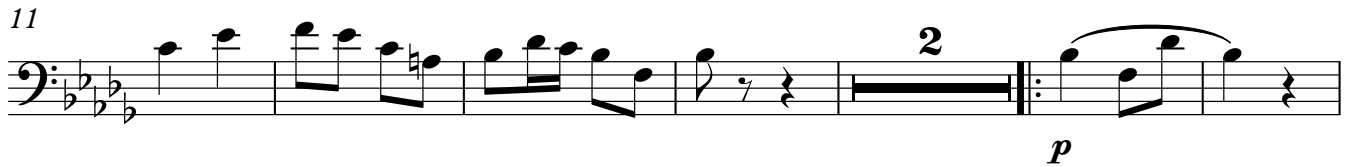
ANTÔNIO DA SILVA FERNANDES

3. Trombone tenor

DOBRADO

Rafael M. Henrique

$\text{♩} = 110$



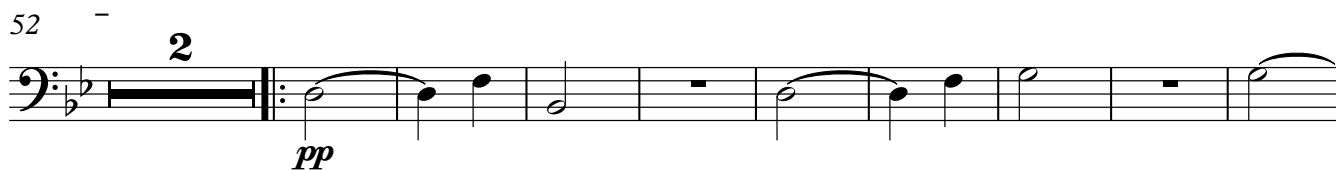
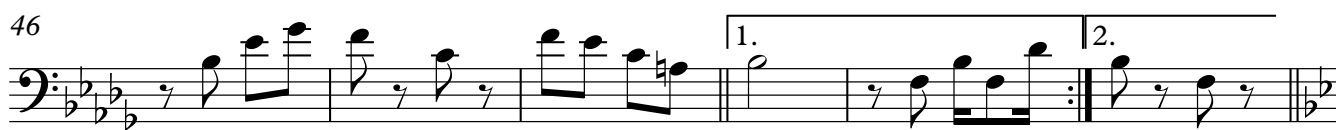
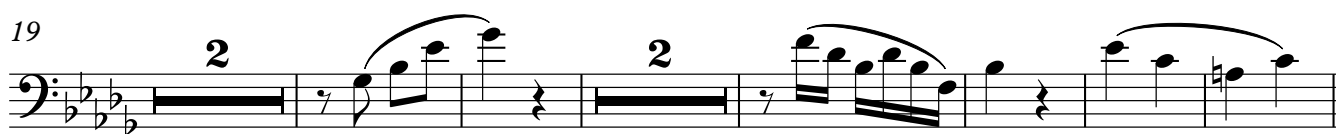
Eufônio

ANTÔNIO DA SILVA FERNANDES

DOBRADO

Rafael M. Henrique

♩ = 110

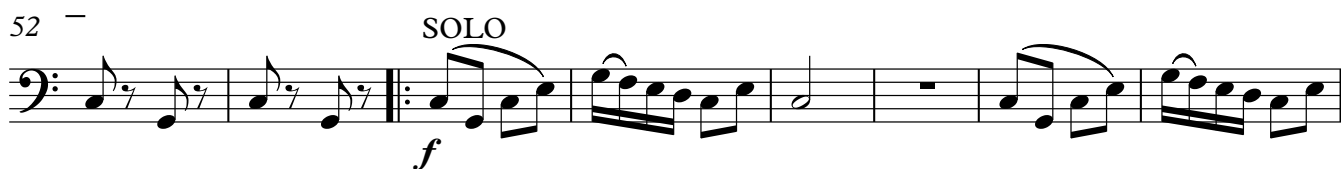


ANTÔNIO DA SILVA FERNANDES

Sousafone em Sib DOBRADO

Rafael M. Henrique

♩ = 110



Caixa/tarola **ANTÔNIO DA SILVA FERNANDES**
DOBRADO

Rafael M.Henrique

$\text{♩} = 110$

f

9

p

18

24

29 1. 2.

37

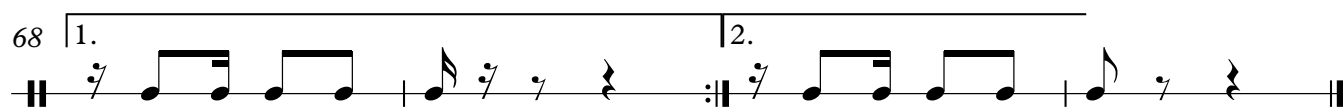
43

49 1. 2.

pp

56

62

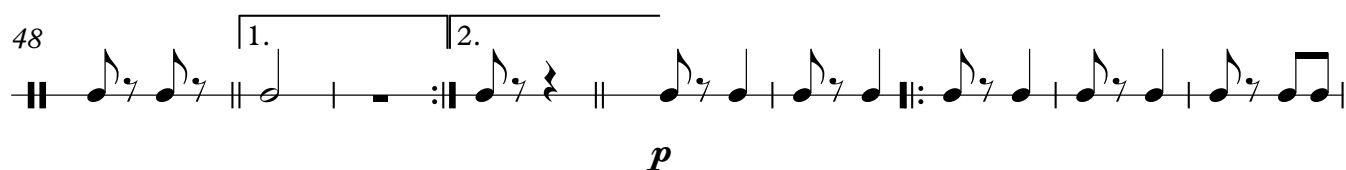
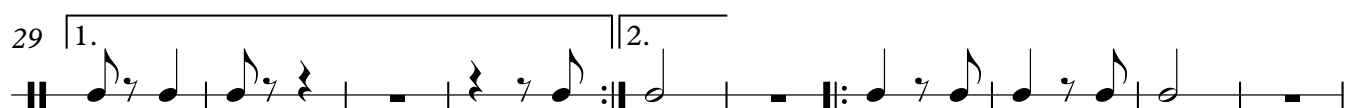
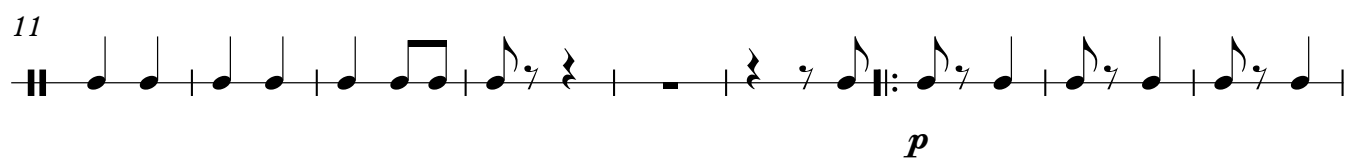


Bumbo

ANTÔNIO DA SILVA FERNANDES

DOBRADO

Rafael M.Henrique



Pratos

ANTÔNIO DA SILVA FERNANDES

DOBRADO

Rafael M.Henrique

$\text{♩} = 110$

f

11

2 10

29

1. 2.

39

48

1. 2.

2 14

68

1. 2.