

La Belle de Jour

Arr. G. Francisco Jr.

$\text{♩} = 90$

Flute 1 *mf*

B♭ Clarinet 1 *mf*

B♭ Clarinet 2 *mf*

B♭ Clarinet 3 *mf*

Saxofone Alto *mf*

Alto Saxophone 2 *mf*

Tenor Saxophone *mf*

Baritone Saxophone *mf*

B♭ Trumpet 1 *mf*

B♭ Trumpet 2 *mf*

B♭ Trumpet 3 *mf*

Trombone 1 *mf*

Trombone 2 *mf*

Trombone 3 & Bass Trombone *mf*

Euphonium *mf*

Tuba *mf*

Tuba em Eb *mf*

Tuba em Bb *mf*

Bateria *f*

4

Fl. 1

B♭ Cl. 1

B♭ Cl. 2

B♭ Cl. 3

A. Sax

A. Sax. 2

T. Sax.

Bar. Sax.

B♭ Tpt. 1

B♭ Tpt. 2

B♭ Tpt. 3

Tbn. 1

Tbn. 2

Tbn. 3
B. Tbn.

Euph.

Tba.

Tu. Eb

Tu. Bb

Bat.

8 To Coda

Fl. 1

B♭ Cl. 1

B♭ Cl. 2

B♭ Cl. 3

A. Sax

A. Sax. 2

T. Sax.

Bar. Sax.

B♭ Tpt. 1

B♭ Tpt. 2

B♭ Tpt. 3

Tbn. 1

Tbn. 2

Tbn. 3
B. Tbn.

Euph.

Tba.

Tu. Eb

Tu. Bb

Bat.

13

Fl. 1

B♭ Cl. 1

B♭ Cl. 2

B♭ Cl. 3

A. Sax

A. Sax. 2

T. Sax.

Bar. Sax.

B♭ Tpt. 1

B♭ Tpt. 2

B♭ Tpt. 3

Tbn. 1

Tbn. 2

Tbn. 3
B. Tbn.

Euph.

Tba.

Tu. Eb

Tu. Bb

Bat.

17

Fl. 1

B♭ Cl. 1

B♭ Cl. 2

B♭ Cl. 3

A. Sax

A. Sax. 2

T. Sax.

Bar. Sax.

B♭ Tpt. 1

B♭ Tpt. 2

B♭ Tpt. 3

Tbn. 1

Tbn. 2

Tbn. 3
B. Tbn.

Euph.

Tba.

Tu. Eb

Tu. Bb

Bat.

21

Fl. 1

B♭ Cl. 1

B♭ Cl. 2

B♭ Cl. 3

A. Sax

A. Sax. 2

T. Sax.

Bar. Sax.

B♭ Tpt. 1

B♭ Tpt. 2

B♭ Tpt. 3

Tbn. 1

Tbn. 2

Tbn. 3
B. Tbn.

Euph.

Tba.

Tu. Eb

Tu. Bb

Bat.

1.

25 [2.]

Fl. 1

B♭ Cl. 1

B♭ Cl. 2

B♭ Cl. 3

A. Sax

A. Sax. 2

T. Sax.

Bar. Sax.

B♭ Tpt. 1

B♭ Tpt. 2

B♭ Tpt. 3

Tbn. 1

Tbn. 2

Tbn. 3
B. Tbn.

Euph.

Tba.

Tu. Eb

Tu. Bb

Bat.

29

Fl. 1

B♭ Cl. 1

B♭ Cl. 2

B♭ Cl. 3

A. Sax

A. Sax. 2

T. Sax.

Bar. Sax.

B♭ Tpt. 1

B♭ Tpt. 2

B♭ Tpt. 3

Tbn. 1

Tbn. 2

Tbn. 3
B. Tbn.

Euph.

Tba.

Tu. Eb

Tu. Bb

Bat.

Detailed description of the musical score: The score is for a 12-piece band. Measures 29-32 are shown. The key signature has two sharps (F# and C#). The time signature is 4/4. Measure 29: Flute 1 has a long note with a slur. Clarinets 1-3 and Alto Saxophones 1-2 have similar long notes with slurs. Tenor Saxophone and Baritone Saxophone have triplets. Trumpets 1-3 have whole notes. Trombones 1-3 have half notes. Euphonium has a triplet. Tuba has a quarter note. Tenor Tubas Eb and Bb have quarter notes. Bass Drum has a quarter note. Measure 30: Flute 1 has a quarter note. Clarinets 1-3 and Alto Saxophones 1-2 have eighth notes. Tenor Saxophone and Baritone Saxophone have triplets. Trumpets 1-3 have whole notes. Trombones 1-3 have half notes. Euphonium has a triplet. Tuba has a quarter note. Tenor Tubas Eb and Bb have quarter notes. Bass Drum has a quarter note. Measure 31: Flute 1 has a quarter note. Clarinets 1-3 and Alto Saxophones 1-2 have eighth notes. Tenor Saxophone and Baritone Saxophone have triplets. Trumpets 1-3 have whole notes. Trombones 1-3 have half notes. Euphonium has a triplet. Tuba has a quarter note. Tenor Tubas Eb and Bb have quarter notes. Bass Drum has a quarter note. Measure 32: Flute 1 has a quarter note. Clarinets 1-3 and Alto Saxophones 1-2 have eighth notes. Tenor Saxophone and Baritone Saxophone have triplets. Trumpets 1-3 have whole notes. Trombones 1-3 have half notes. Euphonium has a triplet. Tuba has a quarter note. Tenor Tubas Eb and Bb have quarter notes. Bass Drum has a quarter note.

33 D.S. al Coda

Fl. 1

B♭ Cl. 1

B♭ Cl. 2

B♭ Cl. 3

A. Sax.

A. Sax. 2

T. Sax.

Bar. Sax.

B♭ Tpt. 1

B♭ Tpt. 2

B♭ Tpt. 3

Tbn. 1

Tbn. 2

Tbn. 3
B. Tbn.

Euph.

Tba.

Tu. Eb

Tu. Bb

Bat.

37

Fl. 1

B♭ Cl. 1

B♭ Cl. 2

B♭ Cl. 3

A. Sax.

A. Sax. 2

T. Sax.

Bar. Sax.

B♭ Tpt. 1

B♭ Tpt. 2

B♭ Tpt. 3

Tbn. 1

Tbn. 2

Tbn. 3
B. Tbn.

Euph.

Tba.

Tu. Eb

Tu. Bb

Bat.

42

Fl. 1

B♭ Cl. 1

B♭ Cl. 2

B♭ Cl. 3

A. Sax

A. Sax. 2

T. Sax.

Bar. Sax.

B♭ Tpt. 1

B♭ Tpt. 2

B♭ Tpt. 3

Tbn. 1

Tbn. 2

Tbn. 3
B. Tbn.

Euph.

Tba.

Tu. Eb

Tu. Bb

Bat.

$\text{♩} = 90$

mf

4

9 To Coda

18

23 1. 2.

26

30

36 D.S. al Coda

2016

La Belle de Jour

Alceu Valença

Arr. G. Francisco Jr.

♩ = 90

4

10 To Coda

20

24 1. 2.

28

35 D.S. al Coda

3

La Belle de Jour

Alceu Valença

Arr. G. Francisco Jr.

$\text{♩} = 90$

mf

4

10 To Coda

21

24 1. 2.

28

35 D.S. al Coda Φ

La Belle de Jour

Alceu Valença

Arr. G. Francisco Jr.

♩ = 90

4

10 To Coda

21

24 1. 2.

28

35 D.S. al Coda

$\text{♩} = 90$

mf

4

9 To Coda

20

23 1. 2.

26

30 3

35 D.S. al Coda Φ 3 3 3

41

La Belle de Jour

Alceu Valença

Arr. G. Francisco Jr.

♩ = 90

mf

4

10 To Coda

21

24 1. 2.

28

33 D.S. al Coda Φ 3 3

39 3

$\text{♩} = 90$

mf

6

11 To Coda

19

26

32 D.S. al Coda

37

La Belle de Jour

Baritone Saxophone

Arr. G. Francisco Jr.

♩ = 90

mf

6

11 To Coda

19

27

33 D.S. al Coda Φ

38

B♭ Trumpet 1

Arr. G. Francisco Jr.

♩ = 90

mf

To Coda
5

13

15

18

28

36 D.S. al Coda

42

B♭ Trumpet 2

Arr. G. Francisco Jr.

♩ = 90

mf

To Coda
5

13

15

18

2

1.

2.

28

36

D.S. al Coda

42

B♭ Trumpet 3

Arr. G. Francisco Jr.

♩ = 90

mf

To Coda
5

13

16

2

24

1. 2.

34

D.S. al Coda

39

Trombone 1

♩ = 90

mf

9 To Coda

19

23

31 D.S. al Coda

38

La Belle de Jour

Alceu Valença

Arr. G. Francisco Jr.

Trombone 2

♩ = 90

mf

9 To Coda

19

23

32 D.S. al Coda

38

Trombone 3

$\text{♩} = 90$

mf

8

To Coda

18

22

30

D.S. al Coda

38

Euphonium

$\text{♩} = 90$

mf

5

9 To Coda

15

22 1. 2.

29

34 D.S. al Coda Φ

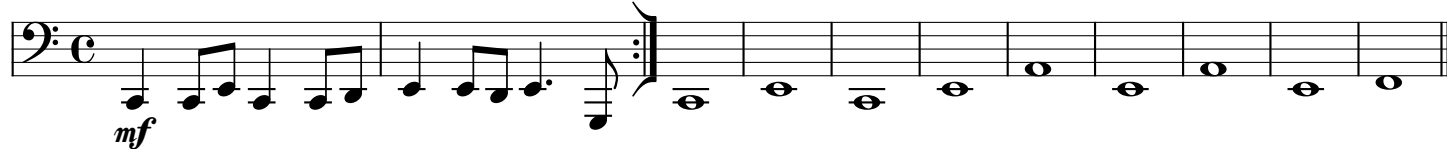
39

Tuba

♩ = 90

%

To Coda



12



17



23



28

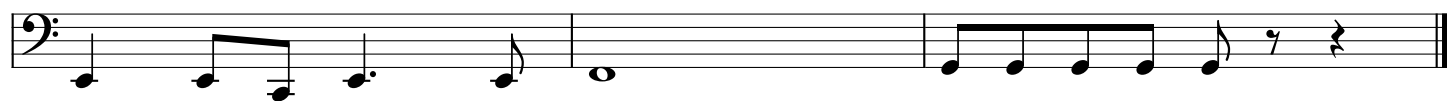


34

D.S. al Coda



40



Tuba em Eb

♩ = 90

mf

To Coda

1.

2.

D.S. al Coda

8

10

16

21

25

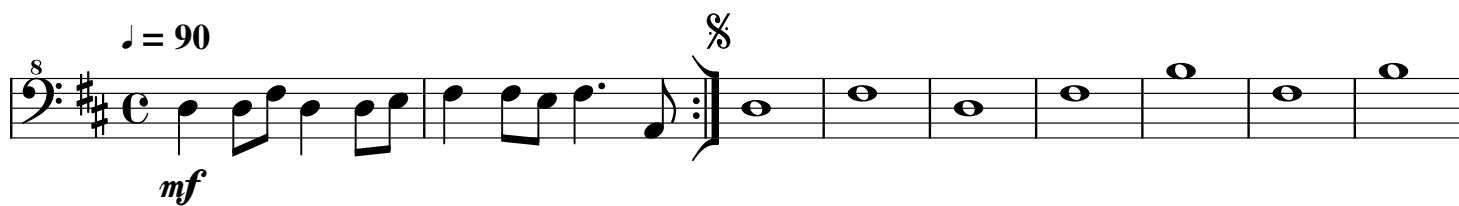
30

35

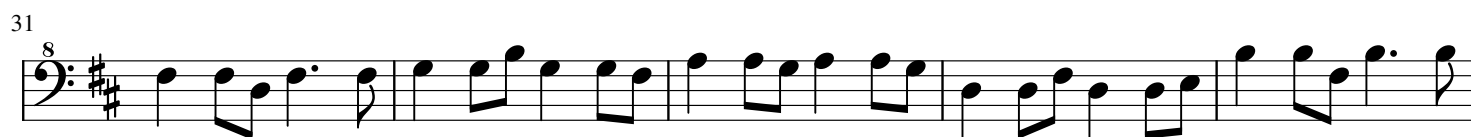
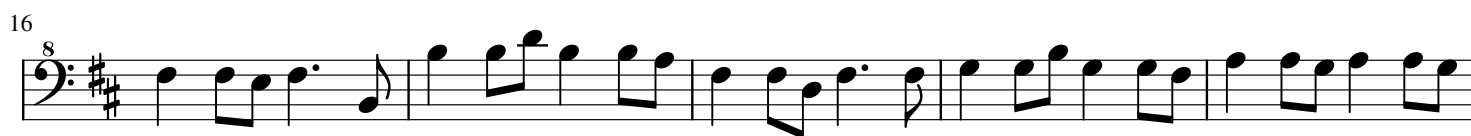
40

Tuba em Bb

♩ = 90



10 To Coda



Bateria

♩ = 90

f

To Coda

1.

2.

D.S. al Coda

2016