

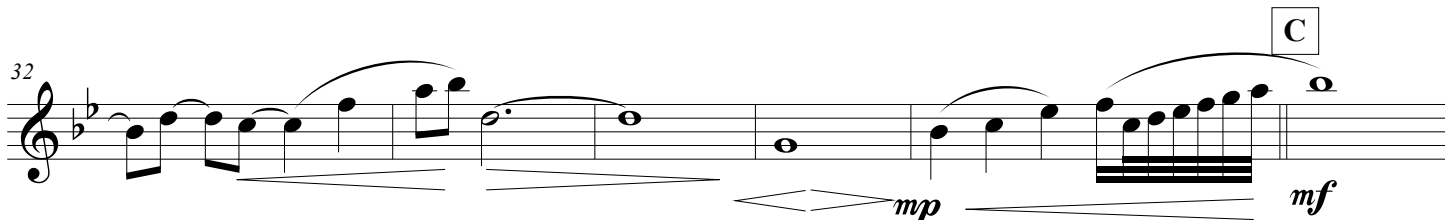
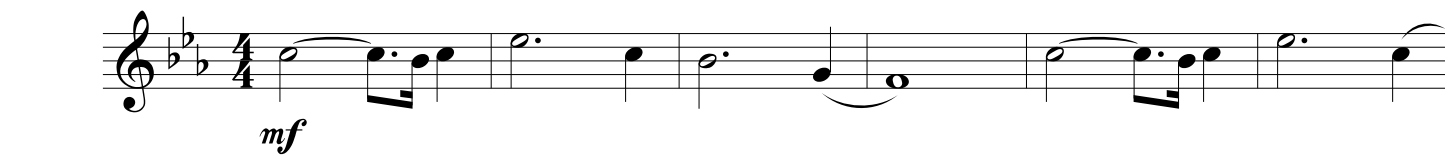
# SOLDADO FERIDO (O RETORNO)

OBOÉ

Orquestra Sinfônica Evangélica Arautos do Rei

Transcrição: Elienay Carvalho  
Ananindeua-Pa, 28 de janeiro de 2016

Moderato ♩ = 116



56 D

mf

2

2

Detailed description: Musical staff 56-62. Measure 56 starts with a half rest, followed by a quarter note G4, an eighth note A4, and a quarter note Bb4. Measure 57 contains a whole rest. Measure 58 contains a half note G4 and a half note A4. Measure 59 contains a half note Bb4 and a half note A4. Measure 60 contains a half note G4 and a half note F4. Measure 61 contains a half note E4 and a half note D4. Measure 62 contains a half note C4 and a half note B3. Dynamics: mf. Rehearsal mark D is above measure 57. First and second endings are indicated by '2' over the staff.

63

f

Detailed description: Musical staff 63-67. Measure 63: eighth notes G4, A4, Bb4, C5. Measure 64: eighth notes D5, E5, F5, G5. Measure 65: eighth notes A5, Bb5, C6, D6. Measure 66: eighth notes E6, F6, G6, A6. Measure 67: eighth notes Bb6, C7, D7, E7. Dynamics: f. Accents are present on measures 66 and 67.

68 E

ff

3

E

Detailed description: Musical staff 68-74. Measure 68: quarter note G4, quarter note A4, quarter note Bb4, quarter note C5. Measure 69: quarter note D5, quarter note E5, quarter note F5, quarter note G5. Measure 70: quarter note A5, quarter note Bb5, quarter note C6, quarter note D6. Measure 71: quarter note E6, quarter note F6, quarter note G6, quarter note A6. Measure 72: quarter note Bb6, quarter note C7, quarter note D7, quarter note E7. Measure 73: quarter note F7, quarter note G7, quarter note A7, quarter note Bb7. Measure 74: quarter note C8, quarter note D8, quarter note E8, quarter note F8. Dynamics: ff. Rehearsal mark E is above measure 71. A triplet of eighth notes is in measure 69.

75

mp

mf

Detailed description: Musical staff 75-79. Measure 75: quarter note G4, quarter note A4, quarter note Bb4, quarter note C5. Measure 76: quarter note D5, quarter note E5, quarter note F5, quarter note G5. Measure 77: quarter note A5, quarter note Bb5, quarter note C6, quarter note D6. Measure 78: quarter note E6, quarter note F6, quarter note G6, quarter note A6. Measure 79: quarter note Bb6, quarter note C7, quarter note D7, quarter note E7. Dynamics: mp, then mf. Accents are present on measures 75, 76, 77, and 78.

80 F

ff

f

3

F

Detailed description: Musical staff 80-85. Measure 80: quarter note G4, quarter note A4, quarter note Bb4, quarter note C5. Measure 81: quarter note D5, quarter note E5, quarter note F5, quarter note G5. Measure 82: quarter note A5, quarter note Bb5, quarter note C6, quarter note D6. Measure 83: quarter note E6, quarter note F6, quarter note G6, quarter note A6. Measure 84: quarter note Bb6, quarter note C7, quarter note D7, quarter note E7. Measure 85: quarter note F7, quarter note G7, quarter note A7, quarter note Bb7. Dynamics: ff, then f. Rehearsal mark F is above measure 83. A triplet of eighth notes is in measure 84.

86

mf

3

Detailed description: Musical staff 86-96. Measure 86: quarter note G4, quarter note A4, quarter note Bb4, quarter note C5. Measure 87: quarter note D5, quarter note E5, quarter note F5, quarter note G5. Measure 88: quarter note A5, quarter note Bb5, quarter note C6, quarter note D6. Measure 89: quarter note E6, quarter note F6, quarter note G6, quarter note A6. Measure 90: quarter note Bb6, quarter note C7, quarter note D7, quarter note E7. Measure 91: quarter note F7, quarter note G7, quarter note A7, quarter note Bb7. Measure 92: quarter note C8, quarter note D8, quarter note E8, quarter note F8. Measure 93: quarter note G8, quarter note A8, quarter note Bb8, quarter note C9. Measure 94: quarter note D9, quarter note E9, quarter note F9, quarter note G9. Measure 95: quarter note A9, quarter note Bb9, quarter note C10, quarter note D10. Measure 96: quarter note E10, quarter note F10, quarter note G10, quarter note A10. Dynamics: mf. A triplet of eighth notes is in measure 92.

G

f

G

Detailed description: Musical staff 97-100. Measure 97: quarter note G4, quarter note A4, quarter note Bb4, quarter note C5. Measure 98: quarter note D5, quarter note E5, quarter note F5, quarter note G5. Measure 99: quarter note A5, quarter note Bb5, quarter note C6, quarter note D6. Measure 100: quarter note E6, quarter note F6, quarter note G6, quarter note A6. Dynamics: f. Rehearsal mark G is above measure 97.

97

mp

cresc.

f

3

Detailed description: Musical staff 97-100. Measure 97: quarter note G4, quarter note A4, quarter note Bb4, quarter note C5. Measure 98: quarter note D5, quarter note E5, quarter note F5, quarter note G5. Measure 99: quarter note A5, quarter note Bb5, quarter note C6, quarter note D6. Measure 100: quarter note E6, quarter note F6, quarter note G6, quarter note A6. Dynamics: mp, then cresc., then f. Triplet markings are above measures 97, 98, 99, and 100.

100

Detailed description: Musical staff 100-104. Measure 100: quarter note G4, quarter note A4, quarter note Bb4, quarter note C5. Measure 101: quarter note D5, quarter note E5, quarter note F5, quarter note G5. Measure 102: quarter note A5, quarter note Bb5, quarter note C6, quarter note D6. Measure 103: quarter note E6, quarter note F6, quarter note G6, quarter note A6. Measure 104: quarter note Bb6, quarter note C7, quarter note D7, quarter note E7. Dynamics: f. A crescendo hairpin is at the end of the staff.