

SOLDADO FERIDO (O RETORNO)

Orquestra Sinfônica Evangélica Arautos do Rei

GUITARRA

Transcrição: Elienay Carvalho

Ananindeua-Pa, 28 de janeiro de 2016

Moderato ♩ = 116

Cm

A^b9

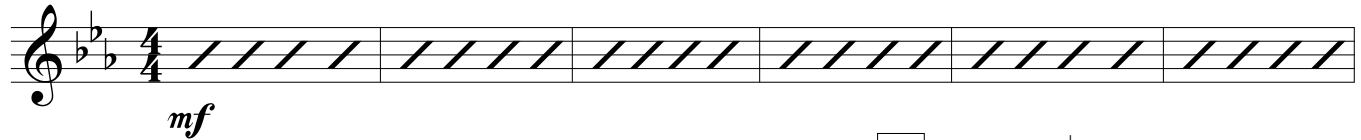
E^b

B^bsus

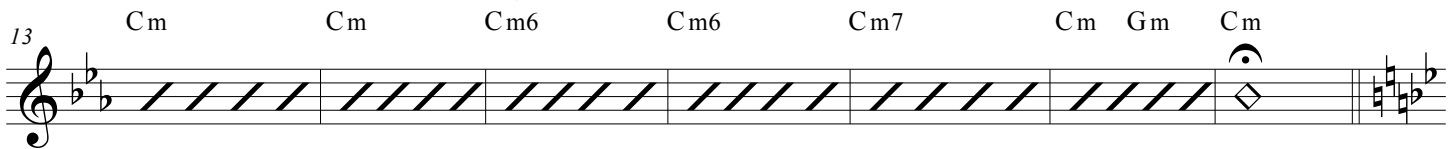
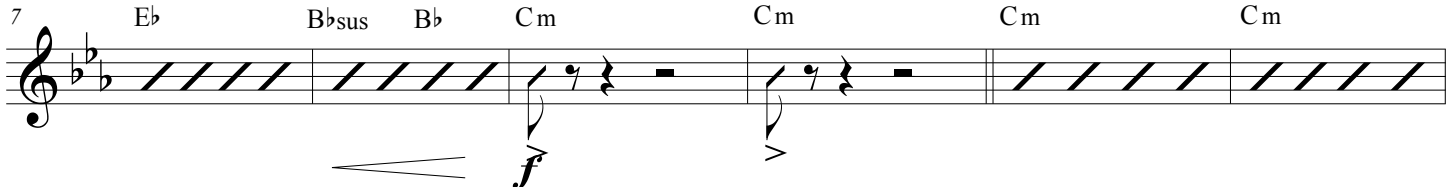
B^b

Cm

A^b9



A **Allegro** ♩ = 138



B **Andante** ♩ = 78

B^b

C/E

F

B^b/D

F

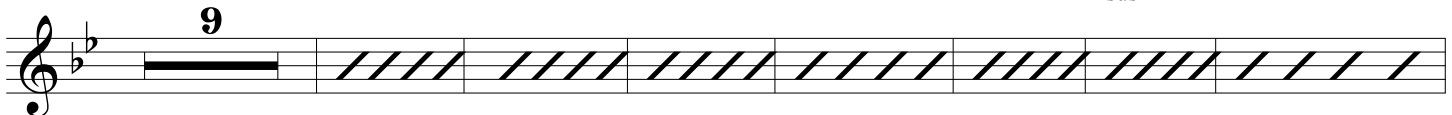
Gm

D^{sus}

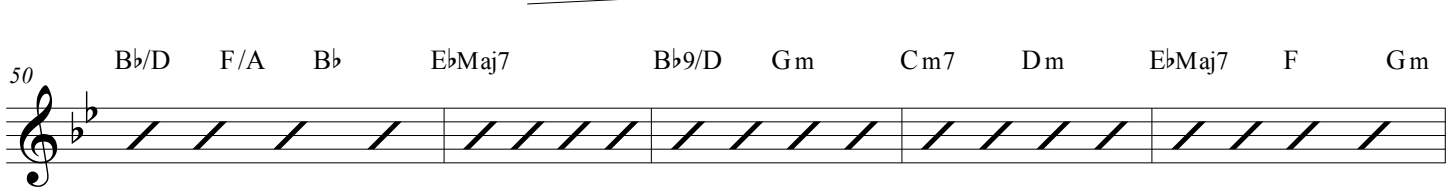
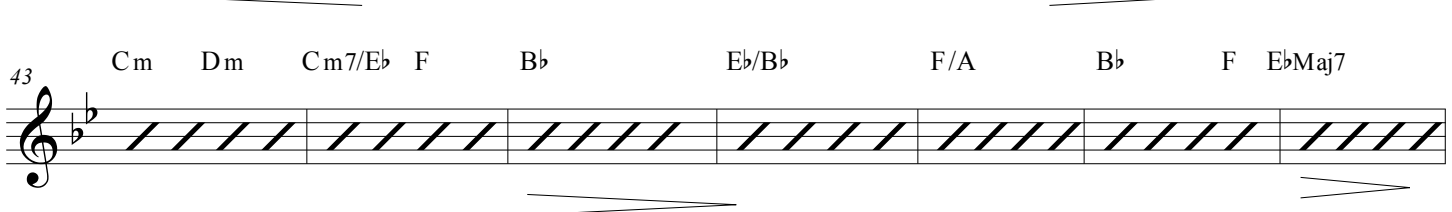
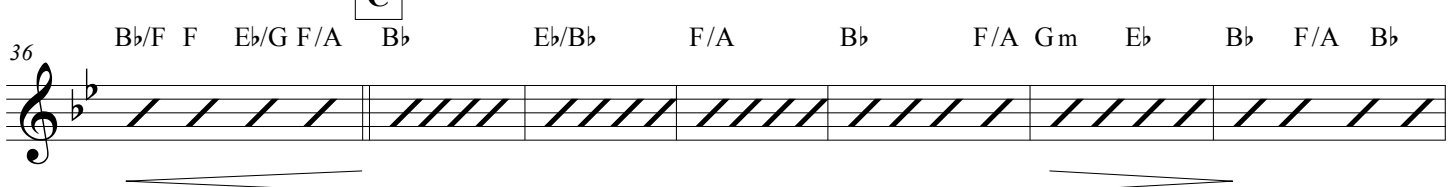
D

E^b

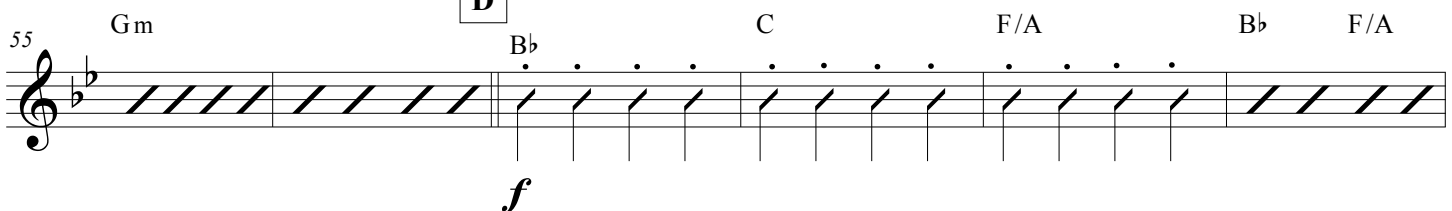
E^b/F E^b/G



C



D



61 Gm D Eb F Eb F F Bb Bb Dm/A Cm/G Bb/F

66 C/E F/Eb F/Eb Bb/D Cm Cm/A Bb F/A Gm D

71 Eb F Eb/G F/A Eb F Eb/G F/A Bb Cm/Bb F/A Eb/Bb

76 Bb EbMaj7 Bb Cm Bb/D Cm/Eb F

81 Bb Cm/Bb F/A F Bb Bb Cm Bb EbMaj7

86 Bbadd9 F Bb EbMaj7 Bbadd9 F Gm Cm Dm Eb F Gm9 Gm9

92 Gm9 EbMaj7 Bb F Bb EbMaj7 Bb F Bb Cm

98 Dm Cm Dm Eb F Bb Bb

E

F

G

mp

mf

mf

mp cresc.

f

v

The image shows a guitar score for the piece 'SOLDADO FERIDO (O RETORNO)'. It consists of seven staves of music, each with a key signature of two flats (Bb and Eb) and a common time signature. The staves are numbered 61, 66, 71, 76, 81, 86, and 92. The music is written in a treble clef. Chord symbols are placed above the staves, and some are enclosed in boxes (E, F, G). Dynamic markings include *mp*, *mf*, and *f*. There are also crescendo and decrescendo hairpins. The score includes various musical notations such as eighth notes, quarter notes, half notes, and rests. Some notes are marked with accents (>) or slurs. The piece ends with a double bar line on the final staff.