

# A Banda

Arr: Antonio Nadson

Chico Buarque

**$\text{♩} = 110$**   
(Só 1 de cada NIPE toca na introdução)

Clarinete em B $\flat$

Saxofone Soprano

*mp*

Saxofone Alto

Saxofone Tenor

Trompete em B $\flat$

Trombone

(Só 1 de cada NIPE toca na introdução)

Tuba

(Só 1 de cada NIPE toca na introdução)

Caixa Clara

*p*

8

Cl. em B $\flat$

Sax. Sop.

A. Sax

Sax. Tn.

Tpt. em B $\flat$

Tbn.

Tba.

Cx.Cl.

*tr*

*mf*

*p*

*mf*

*p*

*p*

3

Cl. em B $\flat$

Sax. Sop.

A. Sax

Sax. Tn.

Tpt. em B $\flat$

Tbn.

Tba.

Cx.Cl.

*p* *mf* *p* *mf*

21

Cl. em B $\flat$

Sax. Sop.

A. Sax

Sax. Tn.

Tpt. em B $\flat$

Tbn.

Tba.

Cx.Cl.

*mf*

*mp*

*mf*

*p*

*mf*

*p*

*tr*

Detailed description of the musical score: The score is for measures 21 through 24. Measure 21: Clarinet in B-flat has a whole rest. Soprano Saxophone has a half note F#4. Alto Saxophone has a whole rest. Tenor Saxophone has a half note F#4. Trumpet in B-flat has a whole rest. Trombone has a whole rest. Tuba has a whole note F#2. Cymbal/Clarinete has a quarter note F#4. Measure 22: Clarinet in B-flat has a whole rest. Soprano Saxophone has a half note G#4. Alto Saxophone has a whole rest. Tenor Saxophone has a half note G#4. Trumpet in B-flat has a whole rest. Trombone has a whole rest. Tuba has a whole note G#2. Cymbal/Clarinete has a quarter note G#4. Measure 23: Clarinet in B-flat has a whole rest. Soprano Saxophone has a half note A5. Alto Saxophone has a whole rest. Tenor Saxophone has a half note A5. Trumpet in B-flat has a whole rest. Trombone has a whole rest. Tuba has a whole note A2. Cymbal/Clarinete has a quarter note A5. Measure 24: Clarinet in B-flat has a whole rest. Soprano Saxophone has a whole rest. Alto Saxophone has a half note B5. Tenor Saxophone has a half note B5. Trumpet in B-flat has a half note B5. Trombone has a half note B5. Tuba has a half note B2. Cymbal/Clarinete has a quarter note B5. The score includes various dynamics: *mf* (mezzo-forte) for Clarinet, Soprano Saxophone, Alto Saxophone, Tenor Saxophone, Trombone, and Tuba; *mp* (mezzo-piano) for Trumpet; and *p* (piano) for Tuba. There is also a trill (tr) in the final measure of the Clarinet part.

28

Cl. em B $\flat$

Sax. Sop.

A. Sax

Sax. Tn.

Tpt. em B $\flat$

Tbn.

Tba.

Cx.Cl.

*tr*

*tr*

*p*

*mf*

3

34

Cl. em B $\flat$

Sax. Sop.

A. Sax

Sax. Tn.

Tpt. em B $\flat$

Tbn.

Tba.

Cx.Cl.

*tr*

*p*

*p*

*p*

Detailed description of the musical score: The score is for measures 34 through 38 of a piece. The key signature has one sharp (F#). The instruments are arranged in a standard jazz ensemble format. Measure 34 starts with a trill on the Clarinet in B-flat. The Soprano Saxophone and Alto Saxophone play a melodic line. The Tenor Saxophone plays a rhythmic pattern. The Trumpet in B-flat and Trombone play a harmonic line. The Tuba plays a low, sustained note. The Cymbal/Clarinete plays a rhythmic pattern. Measures 35-38 continue the melodic and harmonic development, with various dynamics and accents used throughout.

40

*tr*

Cl. em B $\flat$

*mp*

*mf*

Sax. Sop.

*p*

A. Sax

*p*

Sax. Tn.

*mp*

Tpt. em B $\flat$

*mf*

Tbn.

Tba.

Cx.Cl.

Detailed description of the musical score: The score is for measures 40 through 46. Measure 40 starts with a trill on the Clarinet in B-flat. The Soprano Saxophone and Alto Saxophone play chords, with the Alto Saxophone marked *p*. The Tenor Saxophone and Trumpet in B-flat play a melodic line marked *mp*. The Trombone and Tuba play a bass line marked *mf*. The Cymbal/Clarinete part features a rhythmic pattern. Measures 41-46 continue these parts with various melodic and harmonic changes, including accents and dynamic shifts.

47

Cl. em B $\flat$

Sax. Sop.

A. Sax

Sax. Tn.

Tpt. em B $\flat$

Tbn.

Tba.

Cx.Cl.

*mf*

*p*



Cl. em B $\flat$

Sax. Sop.

A. Sax

Sax. Tn.

Tpt. em B $\flat$

Tbn.

Tba.

Cx.Cl.

*mf*

*mf*

*mf*

*p*

*p*

Cl. em B $\flat$

Sax. Sop.

A. Sax

Sax. Tn.

Tpt. em B $\flat$

Tbn.

Tba.

Cx.Cl.

59 60 61 62 63 64

65

Cl. em B $\flat$

Sax. Sop.

A. Sax

Sax. Tn.

Tpt. em B $\flat$

Tbn.

Tba.

Cx.Cl.

This musical score segment contains measures 65 through 70. The instruments and their parts are as follows:

- Cl. em B $\flat$** : Treble clef, key of D major. Measures 65-66 have whole notes (D4, F#4). Measures 67-68 have whole rests. Measures 69-70 have whole notes (D4, F#4).
- Sax. Sop.**: Treble clef, key of D major. A melodic line starting on D4, moving through E4, F#4, G4, A4, B4, C5, and ending on D5.
- A. Sax**: Treble clef, key of D major. Measures 65-66 have eighth notes (D4, E4) with accents. Measures 67-68 have eighth notes (F#4, G4) with accents. Measures 69-70 have whole rests.
- Sax. Tn.**: Treble clef, key of D major. A melodic line starting on D4, moving through E4, F#4, G4, A4, B4, C5, and ending on D5.
- Tpt. em B $\flat$** : Treble clef, key of D major. Measures 65-66 have eighth notes (D4, E4) with accents. Measures 67-68 have eighth notes (F#4, G4) with accents. Measures 69-70 have whole notes (D4, F#4) with accents.
- Tbn.**: Bass clef, key of D major. Measures 65-66 have eighth notes (D3, E3) with accents. Measures 67-68 have eighth notes (F#3, G3) with accents. Measures 69-70 have whole notes (D3, F#3) with accents.
- Tba.**: Bass clef, key of D major. Measures 65-66 have whole notes (D2, F#2). Measures 67-68 have whole notes (D2, F#2). Measures 69-70 have whole notes (D2, F#2).
- Cx.Cl.**: Percussion. Measures 65-66 have a snare drum hit. Measures 67-68 have a snare drum hit. Measures 69-70 have a snare drum hit.

71

1. 2.

Cl. em B $\flat$

Sax. Sop.

A. Sax

Sax. Tn.

Tpt. em B $\flat$

Tbn.

Tba.

Cx.Cl.

*mf* *mp* *f* *mf* *mp* *f* *mf* *p* *mf*

Detailed description of the musical score: The score is for measures 71 through 74. Measure 71 is a whole rest for the Clarinet in B-flat. Measures 72-74 show a first ending (1.) and a second ending (2.). The first ending consists of a quarter note G4, a quarter note A4, and a quarter note B4. The second ending consists of a half note G4, a half note A4, and a half note B4. The dynamics are: *mf* for measures 72-73, *mp* for measure 74, *f* for measure 75, *mf* for measure 76, *mp* for measure 77, *f* for measure 78, *mf* for measure 79, *p* for measure 80, and *mf* for measure 81. The key signature has one sharp (F#) and the time signature is 4/4.

78

Cl. em B $\flat$

Sax. Sop.

A. Sax

Sax. Tn.

Tpt. em B $\flat$

Tbn.

Tba.

Cx.Cl.

## Clarinete 1 e 2

# A Banda

**Arr: Antonio Nadson**

## Chico Buarque

**♩ = 110**

(Só 1 de cada NIPE toca na introdução)

**♩ = 110**  
(Só 1 de cada NIPE toca na introdução)

The musical notation is for a single melodic line in treble clef, key of D major (one sharp), and 2/4 time. It begins with a half rest, followed by a quarter note D4, an eighth note E4, and a quarter note F#4. This is followed by a half note G#4, a quarter note A4, and a half note B4. The next measure contains a half note C#5, a quarter note B4, and a half note A4. The following measure has a half note G#4, a quarter note F#4, and a half note E4. The next measure contains a half note D4, a quarter note C#4, and a half note B3. This is followed by a half note A3, a quarter note G#3, and a half note F#3. The next measure has a half note E3, a quarter note D3, and a half note C#3. The following measure contains a half note B2, a quarter note A2, and a half note G#2. The next measure has a half note F#2, a quarter note E2, and a half note D2. The final measure of the introduction consists of a half note C#2, a quarter note B1, and a half note A1. The notation includes various accidentals (sharps, naturals) and a key signature of one sharp (F#).

13

23

23

mf

tr

tr

tr

2

#

#

#

38

38

tr


*mp*

*mf*

52

32

72

72 

# Saxofone Soprano

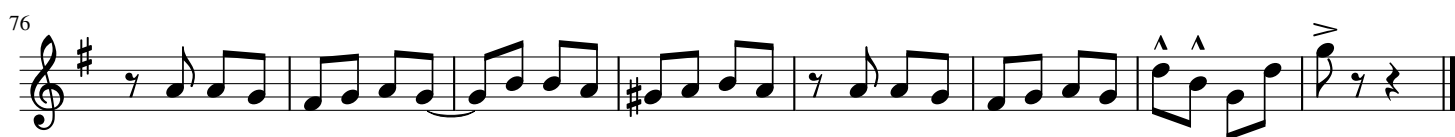
# A Banda

Arr: Antonio Nadson

Chico Buarque

♩ = 110

(Só 1 de cada NIPE toca na introdução)



Saxofone Alto 1 e 2

# A Banda

**Arr: Antonio Nadson**

## Chico Buarque

**♩ = 110**

[illegible]

25

34

34

*p*

45

45

*mf*

61

61

3 4 1. 2.

*mf* *mp*

76

76

76



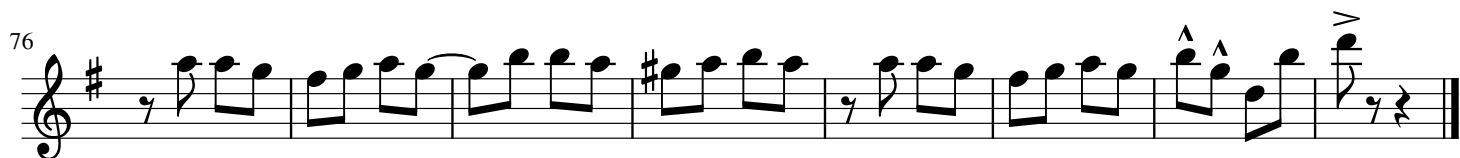
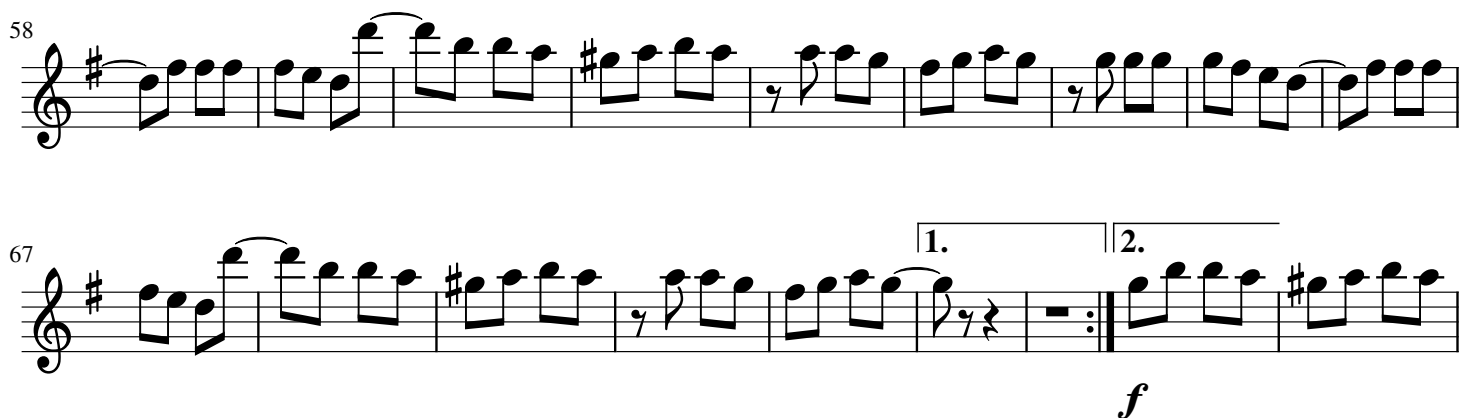
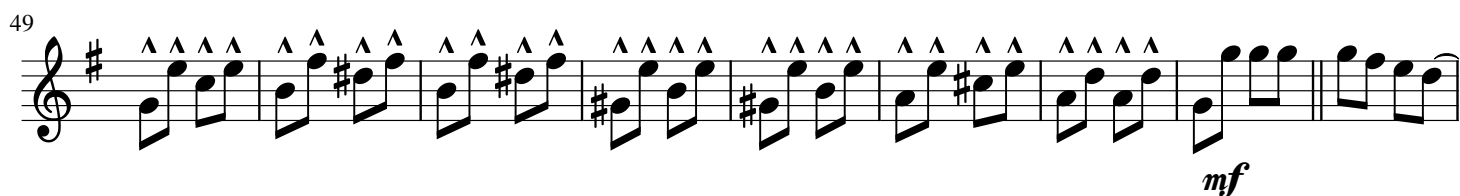
## Saxofone Tenor 1 e 2

## A Banda

Arr: Antonio Nadson

Chico Buarque

♩ = 110



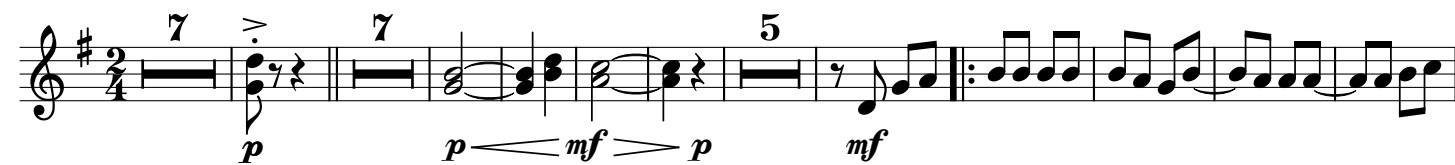
# Trompete 1 e 2

# A Banda

Arr: Antonio Nadson

Chico Buarque

♩ = 110



# Trombone 1 e 2

## A Banda

Arr: Antonio Nadson

Chico Buarque

$\text{♩} = 110$

7 10 2

*p* *mf* *p* *mf* *p*

30 *p*

41 *mf* *p*

51 *p*

63 1. 2.

74 2. *p*

Tuba

A Banda

Arr: Antonio Nadson

Chico Buarque

♩ = 110

(Só 1 de cada NIPE toca na introdução)

First staff of music (measures 1-15). The key signature has one flat (B-flat). The time signature is 2/4. The staff contains a series of eighth and quarter notes, including a triplet of eighth notes in measure 10. Measure 15 ends with a repeat sign.

16

Second staff of music (measures 16-31). The staff continues the melodic line with eighth and quarter notes. Measures 28-30 feature fourteenth-note triplets marked with an accent (^). Measure 31 ends with a repeat sign.

32

Third staff of music (measures 32-45). The staff continues the melodic line with eighth and quarter notes. Measure 35 features a triplet of eighth notes marked with an accent (^). Measure 45 ends with a repeat sign.

46

Fourth staff of music (measures 46-61). The staff continues the melodic line with eighth and quarter notes. Measure 61 ends with a repeat sign.

62

Fifth staff of music (measures 62-76). The staff continues the melodic line with eighth and quarter notes. Measures 74-76 feature a triplet of eighth notes marked with an accent (^). Measure 76 ends with a repeat sign. The dynamic marking *mf* is present below measure 74.

77

Sixth staff of music (measures 77-84). The staff continues the melodic line with eighth and quarter notes. Measures 82-83 feature a triplet of eighth notes marked with an accent (^). Measure 84 ends with a repeat sign.

# A Banda

Chico Buarque

(Só 1 de cada NIPE toca na introdução)

14

23

31

40

49

58

67

67

1. 2.

75