

# FLAVINHA

Frevo de rua

Antônio J. Albuquerque

Alto Sax. 1

Alto Sax. 2

Tenor Sax. 1

Tenor Sax. 2

Baritone Sax.

Trumpet in B♭ 1

Trumpet in B♭ 2

Trumpet in B♭ 3

Trombone 1

Trombone 2

Trombone 3

Tuba

*f*

# FLAVINHA

2

A. Sx. 1

A. Sx. 2

T. Sx. 1

T. Sx. 2

B. Sx.

B $\flat$  Tpt. 1

B $\flat$  Tpt. 2

B $\flat$  Tpt. 3

Tbn. 1

Tbn. 2

Tbn. 3

Tuba

The musical score for 'FLAVINHA' is written for a woodwind and brass ensemble. The woodwind section consists of two Alto Saxophones (A. Sx. 1, 2), two Tenor Saxophones (T. Sx. 1, 2), and one Baritone Saxophone (B. Sx.). The brass section includes three B-flat Trumpets (B $\flat$  Tpt. 1, 2, 3), three Trombones (Tbn. 1, 2, 3), and one Tuba. The key signature is one sharp (F#), and the time signature is 2/4. The score begins with a rehearsal mark '2'. The woodwinds play a complex, rhythmic melody with many slurs and accents. The brass section provides harmonic support with sustained notes and rhythmic patterns.

## 3

[illegible]

# FLAVINHA

4/4

A. Sx. 1

A. Sx. 2

T. Sx. 1

T. Sx. 2

B. Sx.

19

B♭ Tpt. 1

B♭ Tpt. 2

B♭ Tpt. 3

Tbn. 1

Tbn. 2

Tbn. 3

Tuba

The musical score for 'FLAVINHA' is written for a large ensemble. The woodwind section (Alto Saxophones, Tenor Saxophones, and Baritone Saxophone) plays a melodic line in the upper register, characterized by grace notes and slurs. The brass section (B♭ Trumpets, Tenorbone, and Tuba) provides harmonic support with various rhythmic patterns and slurs. The score is in 4/4 time and key of D major. The woodwinds play a melodic line with grace notes and slurs. The brass section provides harmonic support with various rhythmic patterns and slurs.

## FLAVINHA

5

25

A. Sx. 1

A. Sx. 2

T. Sx. 1

T. Sx. 2

B. Sx.

B♭ Tpt. 1

B♭ Tpt. 2

B♭ Tpt. 3

Tbn. 1

Tbn. 2

Tbn. 3

Tuba

# FLAVINHA

6

32

1

2

*D.S. al Coda*

A. Sx. 1

A. Sx. 2

T. Sx. 1

T. Sx. 2

B. Sx.

32

1

2

*D.S. al Coda*

Bb Tpt. 1

Bb Tpt. 2

Bb Tpt. 3

Tbn. 1

Tbn. 2

Tbn. 3

Tuba

Alto Sax. 1

# FLAVINHA

Frevo de rua

Antônio J. Albuquerque

6

12

To Coda

1

18

2

25

31

1

2

D.S. al Coda

38

Alto Sax. 2

# FLAVINHA

Frevo de rua

Antônio J. Albuquerque

6

12

To Coda

1

18

2

25

31

1

2

D.S. al Coda

38



Tenor Sax. 1

# FLAVINHA

Frevo de rua

Antônio J. Albuquerque

5

10

16 *To Coda*

22

28

34 *D.S. al Coda*

38

# FLAVINHA

Tenor Sax. 2

Frevo de rua

Antônio J. Albuquerque

6

12 *To Coda* 1

18 2

25

31 1 2 *D.S. al Coda*

38

# FLAVINHA

Baritone Sax.

Frevo de rua

Antônio J. Albuquerque

6

12

To Coda

1

18

2

25

31

1

2

D.S. al Coda

38

# FLAVINHA

Trumpet in B $\flat$  1

Frevo de rua

Antônio J. Albuquerque

6

12

To Coda

19

29

38

1 2

1 2

D.S. al Coda

# FLAVINHA

Trumpet in B $\flat$  2

Frevo de rua

Antônio J. Albuquerque

6

12

To Coda

19

29

38

1

2

3

1

2

D.S. al Coda

# Trumpet in B♭ 3

**Antônio J. Albuquerque**

1

8

16 *To Coda*

24

33 *D.S. al Coda*

38

Trombone 1

# FLAVINHA

Frevo de rua

Antônio J. Albuquerque

8

To Coda

17

1 2

2

24

3

33

1 2

D.S. al Coda

38

# Trombone 2

# FLAVINHA

Frevo de rua

Antônio J. Albuquerque

§

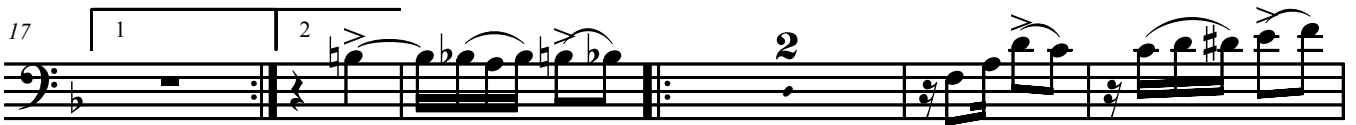


8

*To Coda*



17



24

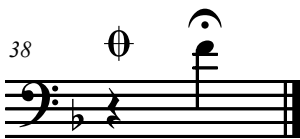


33

*D.S. al Coda*



38





# Trombone 3

# FLAVINHA

Frevo de rua

Antônio J. Albuquerque

§



8

*To Coda*



17



27

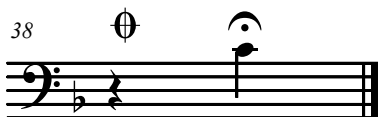


35

*D.S. al Coda*



38



Tuba

# FLAVINHA

Frevo de rua

Antônio J. Albuquerque

§



9

To Coda



17

1 2



26



35

D.S. al Coda



38

Ø

