

DOBRADO N.01

(Série dobrados didáticos)

Comp. e Arr.: Rafael M.Henrique

♩ = 120

Flauta Transversal

Clarinete em B \flat

Saxofone Alto

Saxofone Tenor

Trompa em F

Trompete em B \flat

Trombone

Bombardino

Sousafone em B \flat

Caixa Clara

Bumbo de Concerto

Pratos

6

Fl.

Cl. em B \flat

A. Sax

Sax. Tn.

Trom. F

Tpt. em B \flat

Tbn.

Bomb.

Ssfn. em B \flat

Cx.Cl.

Bumb. Conc.

Cym.

12

Fl.

Cl. em B \flat

A. Sax

Sax. Tn.

Trom. F

Tpt. em B \flat

Tbn.

Bomb.

Ssfm. em B \flat

Cx.Cl.

Bumb. Conc.

Cym.

mp

mp

mp

mp

mp

mp

mp

mp

mp

p

p

20

Fl.

Cl. em B \flat

A. Sax

Sax. Tn.

Trom. F

Tpt. em B \flat

Tbn.

Bomb.

Ssf. em B \flat

Cx.Cl.

Bumb. Conc.

Cym.

1.

mp

mp

27

Fl.

Cl. em B \flat

A. Sax

Sax. Tn.

Trom. F

Tpt. em B \flat

Tbn.

Bomb.

Ssfm. em B \flat

Cx.Cl.

Bumb. Conc.

Cym.

2.

Fl.

Cl. em B \flat

A. Sax

Sax. Tn.

Trom. F

Tpt. em B \flat

Tbn.

Bomb.

Ssfm. em B \flat

Cx.Cl.

Bumb. Conc.

Cym.

41

Fl.

Cl. em B \flat

A. Sax

Sax. Tn.

Trom. F

Tpt. em B \flat

Tbn.

Bomb.

Ssfm. em B \flat

Cx.Cl.

Bumb. Conc.

Cym.

48

1. 2.

Fl.

Cl. em B \flat

A. Sax

Sax. Tn.

Trom. F

Tpt. em B \flat

Tbn.

Bomb.

Ssfm. em B \flat

Cx.Cl.

Bumb. Conc.

Cym.

mf *p*

mf *p*

mf *p* *p*

pp

Fl. *mp*

Cl. em B \flat *mp*

A. Sax *mp*

Sax. Tn. *mp*

Trom. F *mp*

Tpt. em B \flat *mp*

Tbn. *mp*

Bomb. *mp*

Ssfm. em B \flat *mp*

Cx.Cl. *p*

Bumb. Conc.

Cym.

Detailed description of the musical score: The score is for a 12-measure piece. The key signature has two sharps (F# and C#). The time signature is 4/4. The instruments and their parts are: Flute (Fl.) with a melodic line and a slur; Clarinet in B-flat (Cl. em B \flat) with a similar melodic line; Alto Saxophone (A. Sax) with a melodic line; Saxophone Tenor (Sax. Tn.) with a melodic line; Trombone F (Trom. F) with a rhythmic pattern of eighth notes and slurs; Trumpet in B-flat (Tpt. em B \flat) with a melodic line and slurs; Tuba (Tbn.) with a rhythmic pattern of eighth notes and slurs; Bombardone (Bomb.) with a melodic line and slurs; Bassoon in B-flat (Ssfm. em B \flat) with a rhythmic pattern of eighth notes; Cor Anglais (Cx.Cl.) with a rhythmic pattern of eighth notes and slurs; Bumbardone Concerto (Bumb. Conc.) with a rhythmic pattern of eighth notes and slurs; and Cymbal (Cym.) with a rhythmic pattern of eighth notes. Dynamic markings include *mp* (mezzo-piano) for most instruments and *p* (piano) for the Cor Anglais. Articulation includes accents and slurs.

62

Fl.

Cl. em B \flat

A. Sax

Sax. Tn.

Trom. F

Tpt. em B \flat

Tbn.

Bomb.

Ssf. em B \flat

Cx.Cl.

Bumb. Conc.

Cym.

68

1. 2.

Fl.

Cl. em B \flat

A. Sax

Sax. Tn.

Trom. F

Tpt. em B \flat

Tbn.

Bomb.

Ssfm. em B \flat

Cx.Cl.

Bumb. Conc.

Cym.

Detailed description of the musical score: The score is for a 10-piece band. The instruments are Flute (Fl.), Clarinet in B-flat (Cl. em B \flat), Alto Saxophone (A. Sax), Tenor Saxophone (Sax. Tn.), Trombone F (Trom. F), Trumpet in B-flat (Tpt. em B \flat), Tuba (Tbn.), Bombardone (Bomb.), Soprano Saxophone in B-flat (Ssfm. em B \flat), Cymbal (Cym.), Conga (Cx.Cl.), and Snare Drum (Bumb. Conc.). The key signature has two sharps (F# and C#). The score starts at measure 68 and ends at measure 71. Measures 69 and 70 are marked as first and second endings. The Flute part has a melodic line with a first ending and a second ending. The Clarinet, Alto Saxophone, and Tenor Saxophone parts have similar melodic lines. The Trombone F part has a rhythmic pattern of eighth notes. The Trumpet in B-flat part has a melodic line with accents. The Tuba part has a melodic line with accents. The Bombardone part has a melodic line with accents. The Soprano Saxophone in B-flat part has a melodic line with accents. The Cymbal part has a rhythmic pattern of eighth notes. The Conga part has a rhythmic pattern of eighth notes. The Snare Drum part has a rhythmic pattern of eighth notes with accents.

$\text{♩} = 120$

mf

12

mp

27

37

46

1. 2. 3.

mp

60

1. 2.

Clarinete em B \flat

DOBRADO N.01

(Série dobrados didáticos)

Comp. e Arr.: Rafael M.Henrique

$\text{♩} = 120$

mf

13 *mp*

28

38

48 *mp*

63

Saxofone Alto

DOBRADO N.01

(Série dobrados didáticos)

Comp. e Arr.: Rafael M.Henrique

$\text{♩} = 120$

mf

11 *mp*

26 1. 2.

38 1. 2.

51 3 *mp*

68 1. 2.

Saxofone Tenor

DOBRADO N.01

(Série dobrados didáticos)

Comp. e Arr.: Rafael M.Henrique

$\text{♩} = 120$

mf

11 *mp*

27

39

51 *mp*

68

Trompa em F

DOBRADO N.01

(Série dobrados didáticos)

Comp. e Arr.: Rafael M.Henrique

$\text{♩} = 120$

mf

12

mp

22

1. 2.

31

41

1. 2.

51

p

62

1. 2.

Trompete em B \flat

DOBRADO N.01

(Série dobrados didáticos)

Comp. e Arr.: Rafael M.Henrique

$\text{♩} = 120$

mf

13 *mp*

28

38

48 *mp*

62

Trombone

DOBRADO N.01

(Série dobrados didáticos)

Comp. e Arr.: Rafael M.Henrique

♩ = 120

mf

10

mp

26

1. 2.

mp

39

1. 2.

mf

51

p

mp

62

1. 2.

$\text{♩} = 120$

mf

10

mp

26

1. 2.

36

1.

49

2. 3

mf *p* *mp*

64

1. 2.

Sousafone em B \flat

DOBRADO N.01

(Série dobrados didáticos)

Comp. e Arr.: Rafael M.Henrique

$\text{♩} = 120$



11



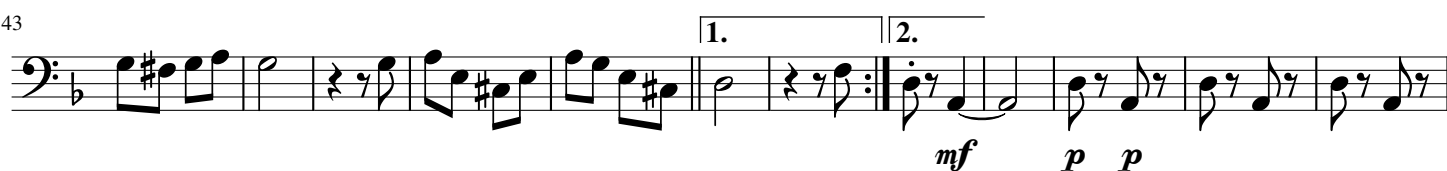
21



31



43



55



65



$\text{♩} = 120$

mf

11

p

22

1. 2.

32

42

1. 2.

p

53

p

65

1. 2.

Bumbo de Concerto

DOBRADO N.01

(Série dobrados didáticos)

Comp. e Arr.: Rafael M.Henrique

The musical score for 'The Rose Tree' is written on a single staff. It begins with a treble clef, a key signature of one sharp (F#), and a time signature of 2/4. The tempo is marked as quarter note = 120. The piece starts with a whole rest, followed by a series of eighth and sixteenth notes. The dynamics are marked as *mf* (mezzo-forte) and *p* (piano). The score includes a repeat sign and a double bar line.

16

1.

30

46

1. 2.

pp

[illegible]

73

♩ = 120

mf

mp

27

41

69

1.

2.

1.

2.

5

12

12