

# Quando Jesus Passar

Pe. Zezinho

Arr. G. Francisco Jr.

$\text{♩} = 100$

Flauta Transversal

Clarinete

Clarinete

Clarinete

Saxofone Soprano

Saxofone Alto

Saxofone Tenor

Saxofone Barítono

Trompa em F

Trompa em F

Trompa em F

Trompete

Trompete

Trompete

Trombone

Trombone

Trombone

Bombardino

Tuba em C

Sousafone em B $\flat$

Bateria

2 mikatrompetista@gmail.com

14

Fl.

Cl.

Cl.

Cl.

Sax. Sop.

A. Sax.

Sax. Tn.

Bar. Sax.

Trom. F.

Trom. F.

Trom. F.

Tpt.

Tpt.

Tpt.

Tbn.

Tbn.

Tbn.

Bomb.

C Tb.

Ssf. em Bb

Bat.

2<sup>o</sup> Fl. I.

Cl.

Cl.

Cl.

Sax. Sop.

A. Sax

Sax. Tn.

Bar. Sax

Trom. F

Trom. F

Trom. F

Tpt.

Tpt.

Tpt.

Tbn.

Tbn.

Tbn.

Bomb.

C Tb.

Ssfm. em Bb

Bat.

28. 2.

Fl.

Cl. *mp*

Cl. *mp*

Cl. *mp*

Sax. Sop. *mp*

A. Sax *mp*

Sax. Tn. *mp*

Bar. Sax *mp*

Trom. F *mp*

Trom. F *mp*

Trom. F *mp*

Tpt. *mf*

Tpt. *mf*

Tpt. *mf*

Tbn. *mf*

Tbn. *mf*

Tbn. *mf*

Bomb. *mf*

C Tb. *mp*

Ssfn. em Bb *mp*

Bat. *mp*

35 1. 2.

Fl.

Cl.

Cl.

Cl.

Sax. Sop.

A. Sax

Sax. Tn.

Bar. Sax

Trom. F

Trom. F

Trom. F

Tpt.

Tpt.

Tpt.

Tbn.

Tbn.

Tbn.

Bomb.

C Tb.

Ssfn. em Bb

Bat.

$\text{♩} = 100$

*mf* *mp*

6 *mp*

13 *mf*

19

24 1. 2. *mp*

31 1. *mf*

2. 37

Clarinete 1

Quando Jesus Passar

Pe. Zezinho

Arr. G. Francisco Jr.

$\text{♩} = 100$

*mf* *mp*

6 *mp*

12

18 *mf*

22 1.

28 2.

34 1. 2.

*mp*

$\text{L}_3 \text{—} 3$

♩ = 100

*mf* *mp*

7

*mp*

14

*mf*

20

26

*mp*

34

*mp*

$\text{♩} = 100$

*mf* *mp*

7 *mp*

14 *mf*

20

26 *mp*

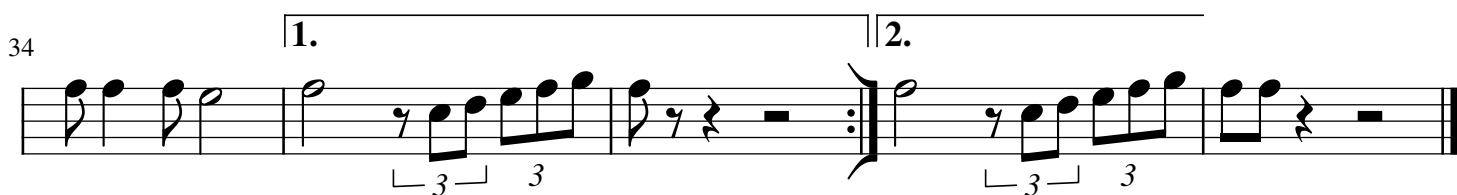
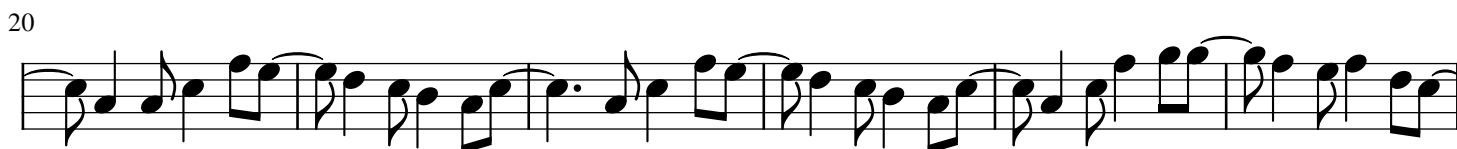
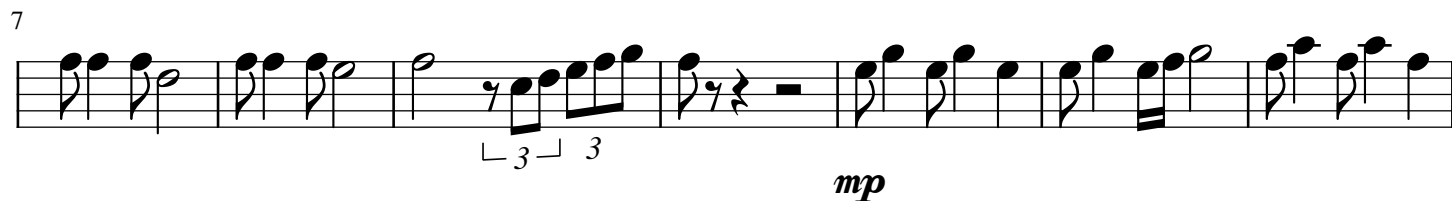
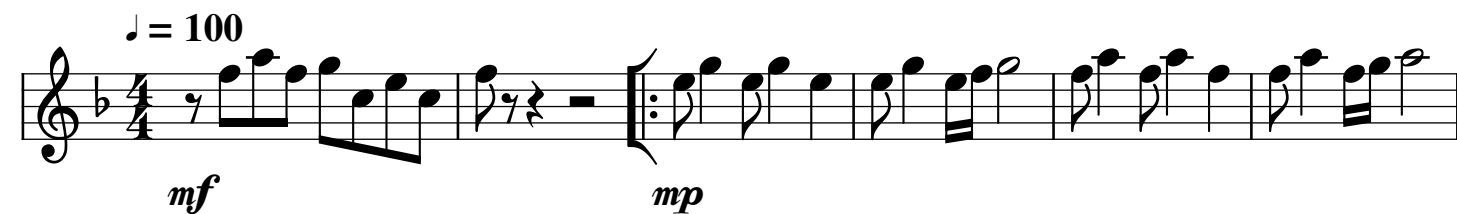
34

## Saxofone Soprano

## Quando Jesus Passar

Pe. Zezinho

Arr. G. Francisco Jr.



$\text{♩} = 100$

*mf* *mp*

6 *mp*

12

17 *mf*

22 1. 2.

29 *mp*

35 1. 2.

$\text{♩} = 100$

*mf* *mp* *mp* *mp*

7 12 18 23 28 34

1. 2. 1. 2.

3 3 3 3

$\text{♩} = 100$

*mf* *mp*

7

*mp*

12

18

*mp*

23

1.

2.

28

*mp*

34

1. 2.

♩ = 100



8



15



21



26

1.

2.



33

1.

2.



$\text{♩} = 100$

*mf* *mp*

8

*mp*

15

*mp*

21

*mp*

1. 2.

27

*mp*

34

1. 2.

*mp*

$\text{♩} = 100$

*mf* *mp*

8

*mp*

15

*mp*

22

1. 2.

29

*mp*

1.

2.

35

1. 2.

$\text{♩} = 100$

*mf* *mf*

7

*mp*

15

*mf*

21

26

1. 2.

*mf*

32

1.

2.

37

3

♩ = 100

*mf* *mf*

8

*mp*

17

*mf*

22

1. 2.

27

*mf*

1. 2. 3

33

*mf*

# Quando Jesus Passar

Arr. G. Francisco Jr.

The first staff of music is in G major (one sharp) and 4/4 time. It begins with a whole rest for one measure, followed by a quarter rest, then an eighth-note pair (G4, A4), a quarter note (B4), and a quarter note (G4). This is followed by a repeat sign. After the repeat, there is a half note (G4), a quarter rest, an eighth-note pair (G4, A4), a quarter note (B4), and a quarter note (G4). The staff concludes with an eighth-note pair (G4, A4), a quarter note (B4), a dotted quarter note (G4), and an eighth-note pair (F#4, E4).

The first staff of music for 'The Rose Tree' begins with a treble clef and a key signature of one flat (B-flat). The melody starts with a quarter note G4, followed by a dotted quarter note A4, and an eighth note B-flat4. This is followed by a quarter note G4, a quarter note F4, and a quarter note E4. The melody then continues with a quarter note D4, a quarter note C4, and a quarter note B-flat3. The staff concludes with a double bar line and a repeat sign. Below the staff, the dynamic marking *mp* (mezzo-piano) is indicated.

Measures 17-20 of the piece. Measure 17 begins with a treble clef and a key signature of one flat. The melody starts on a whole note G4, followed by a quarter rest, then an eighth-note triplet of A4, B4, and C5. The melody continues with a series of eighth and sixteenth notes, including slurs and ties. The dynamic marking *mf* (mezzo-forte) is present below the staff. The piece concludes with a double bar line at the end of measure 20.

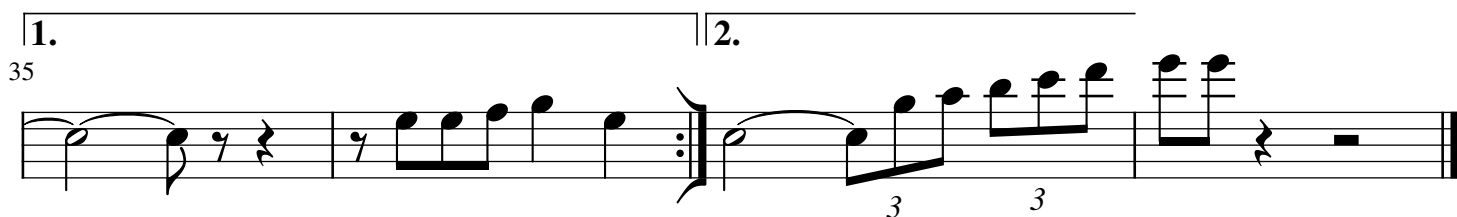
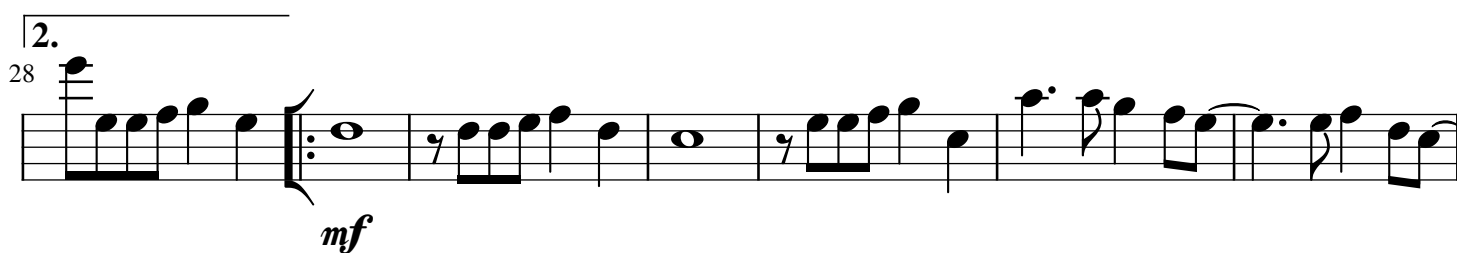
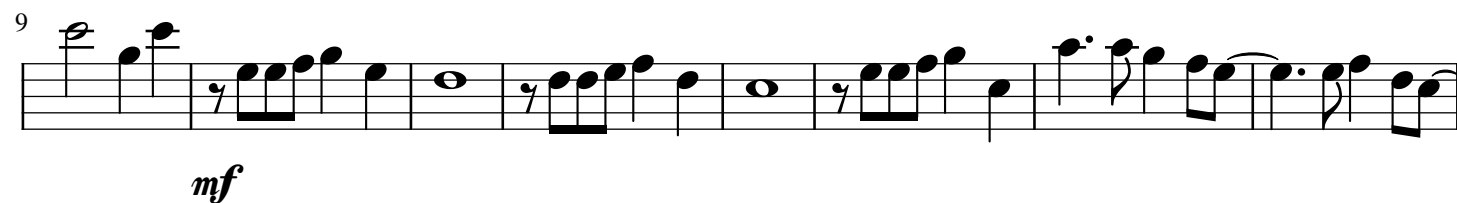
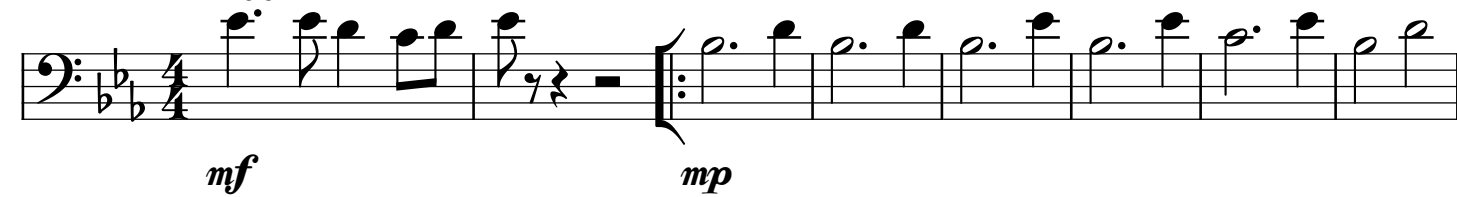
## Trombone 1

## Quando Jesus Passar

Pe. Zezinho

Arr. G. Francisco Jr.

♩ = 100



## Trombone 2

## Quando Jesus Passar

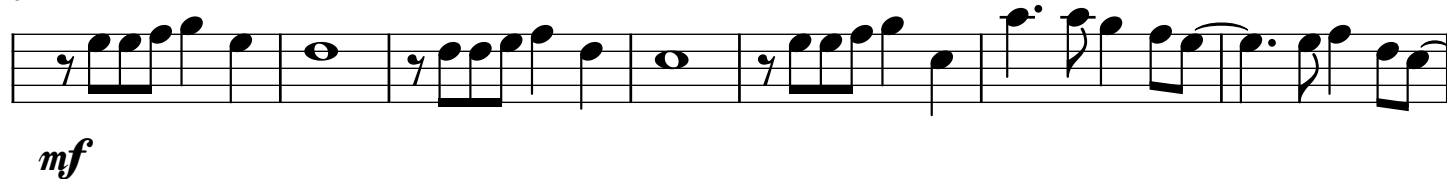
Pe. Zezinho

Arr. G. Francisco Jr.

♩ = 100



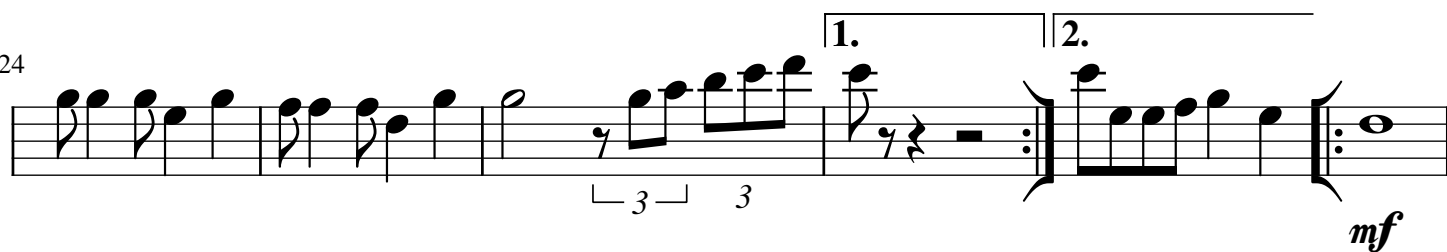
10



17



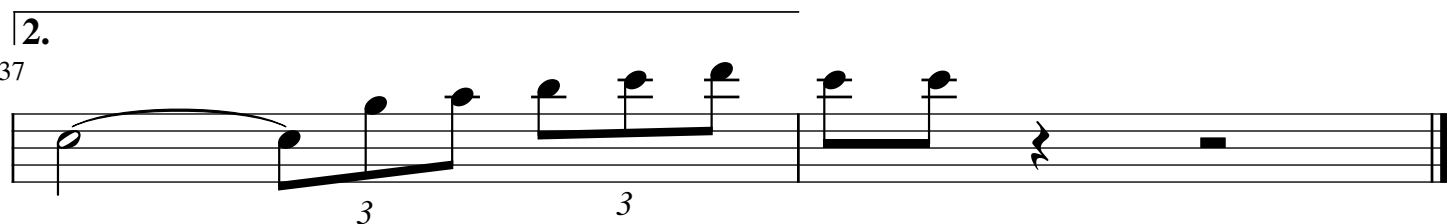
24



30



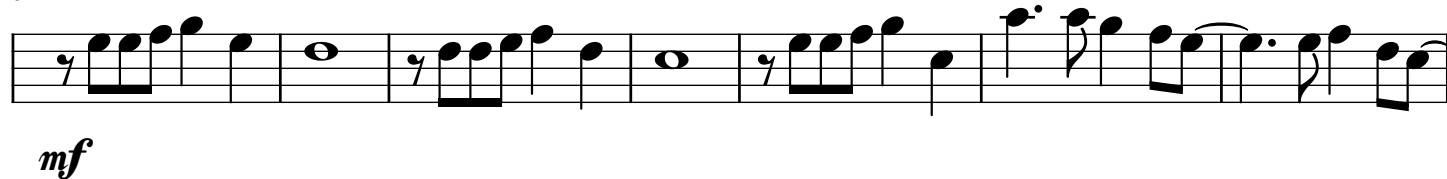
37



♩ = 100



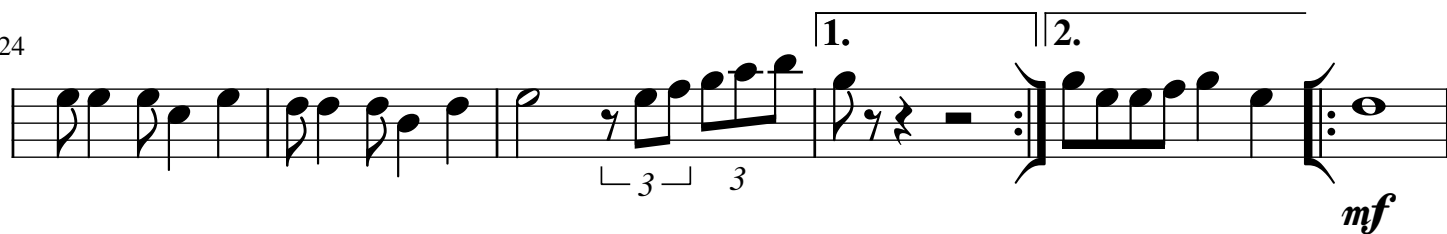
10



17



24

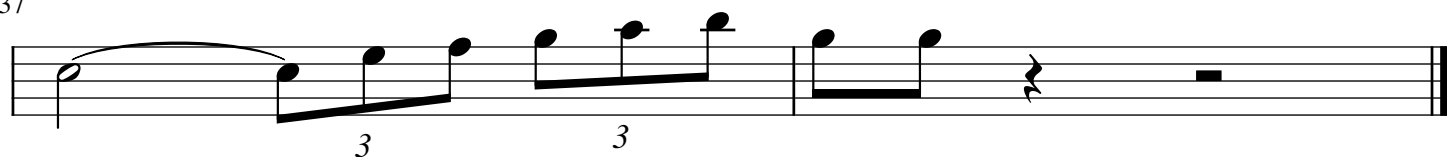


30



2.

37



$\text{♩} = 100$

*mf* *mp*

7

*mp*

13

19

*mp*

24

1. 2.

29

*mp*

1. 2.

35

*mp*

♩ = 100



6



12



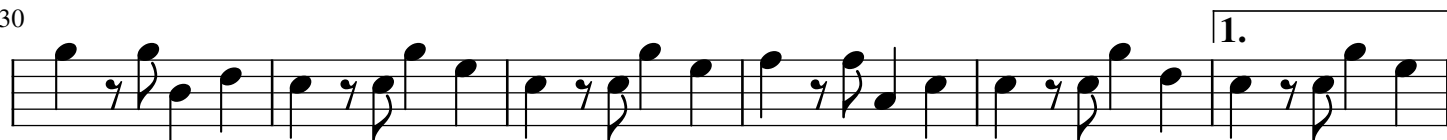
18



24

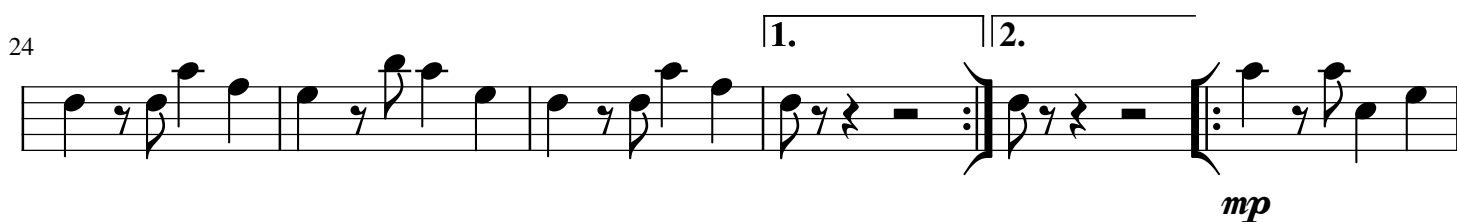
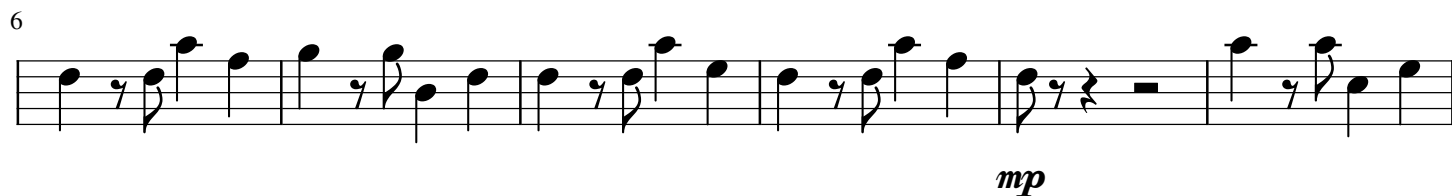
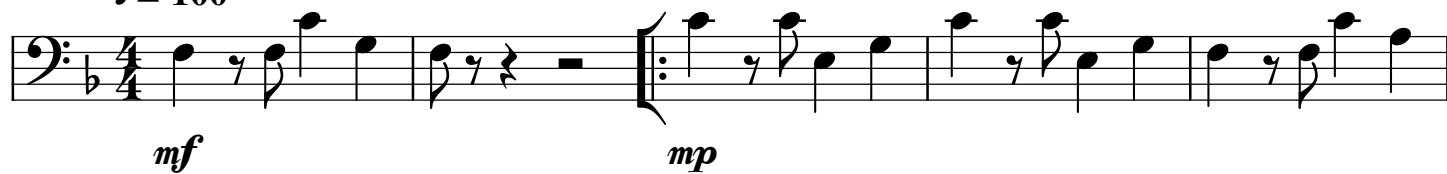


30



36



$\text{♩} = 100$ 

## Bateria

## Quando Jesus Passar

Pe. Zezinho

Arr. G. Francisco Jr.

♩ = 100

mf

6

11

16

21

26

32

37

1.

2.

1.

2.