

SABIÁ

XÓTE

Composição: Luiz Gonzaga
Arranjo: Laudemir Ramos

♩ = 140

Flauta *mf*

Clarinete em Sib *mf*

Saxofone soprano *mf*

I Saxofone alto *f*

III Saxofone alto *f*

II Saxofone tenor *mf*

IV Saxofone tenor *mf*

Saxofone barítono *mf*

Trompa em Fá *f*

I Trompete em Sib *f*

II, III Trompete em Sib *f*

I Trombone tenor *f*

II, III Trombone tenor *f*

Trombone baixo *f*

Eufônio *f*

Sousafone em Mib *f*

Sousafone em Sib *f*

Bateria

♩ = 140

Baixo elétrico **A**

14 **B**

Fl. *mf*

Cl. *mf*

Sax. sop. *mf*

Sax. al. *mf*

Sax. al. *mf*

Sax. ten. *mf*

Sax. ten. *mf*

Sax. bar. *mf*

Tr. *f*

Tp. *mf*

Tp. *mf*

Trne. *mf* *mp* *f*

Trne. *mf* *mp* *f*

Trne. b. *mf* *mp* *f*

Euf. *f*

Sousa. *mf*

Sousa. *mf*

Bat. *mf*

B

Baixo e. *mf*

21 **C**

Fl. *f*

Cl. *f*

Sax. sop. *f*

Sax. al. *f*

Sax. al. *f*

Sax. ten. *f*

Sax. ten. *f*

Sax. bar. *f*

Tr. *f*

Tpte. *f*

Tpte. *f*

Trne. *f*

Trne. *f*

Trne. b. *f*

Euf. *mf*

Sousa. *f*

Sousa. *f*

Bat. *Fox-Trot* *Só Simbal*

Baixo e. *f*

To Coda

D.S. al Coda

34

Fl.

Cl.

Sax. sop.

Sax. al.

Sax. al.

Sax. ten.

Sax. ten.

Sax. bar.

Tr.

Tpte.

Tpte.

Trne.

Trne.

Trne. b.

Euf.

Sousa.

Sousa.

Bat.

Baixo e.

mf

mf

mf

f

f

To Coda

D.S. al Coda

Coda ϕ

39

Fl.
Cl.
Sax. sop.
Sax. al.
Sax. al.
Sax. ten.
Sax. ten.
Sax. bar.

Detailed description: This block contains the woodwind section of the score. It features eight staves. The Flute (Fl.) and Clarinet (Cl.) parts are in treble clef with a key signature of two flats. The Soprano Saxophone (Sax. sop.) is in treble clef with two flats. The two Alto Saxophones (Sax. al.) are in treble clef with one sharp. The two Tenor Saxophones (Sax. ten.) are in treble clef with two flats. The Baritone Saxophone (Sax. bar.) is in treble clef with one sharp. The music consists of sustained notes in the first two measures, followed by a melodic phrase in the third measure, and a final measure with a quarter rest. Long horizontal lines above the notes indicate sustained sounds.

Tr.
Tpte.
Tpte.
Trne.
Trne.
Trne. b.
Euf.
Sousa.
Sousa.

Detailed description: This block contains the brass and woodwind section of the score. It features eight staves. The Trumpet (Tr.) and Trombone (Tpte.) parts are in treble clef with two flats. The Trombone (Trne.) parts are in bass clef with two flats. The Euphonium (Euf.) is in treble clef with two flats. The two Sousaphone (Sousa.) parts are in bass clef with one sharp. The music consists of sustained notes in the first two measures, followed by a melodic phrase in the third measure, and a final measure with a quarter rest. Long horizontal lines above the notes indicate sustained sounds.

Bat.

Coda ϕ

Baixo e.

Detailed description: This block contains the percussion and bassoon parts. The first staff is for the Drum (Bat.) in a standard drum set notation. The second staff is for the Bassoon (Baixo e.) in bass clef with two flats. The music consists of a rhythmic pattern in the first two measures, followed by a melodic phrase in the third measure, and a final measure with a quarter rest.

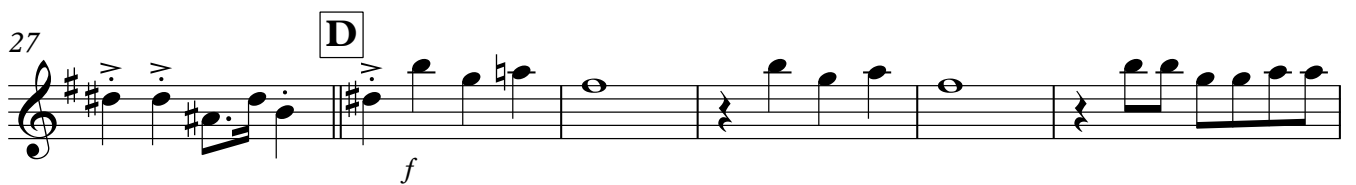
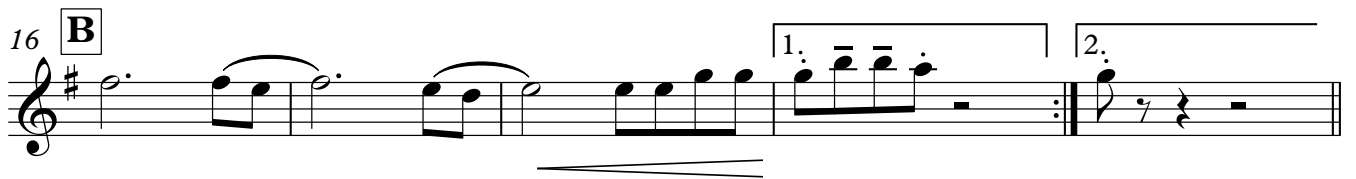
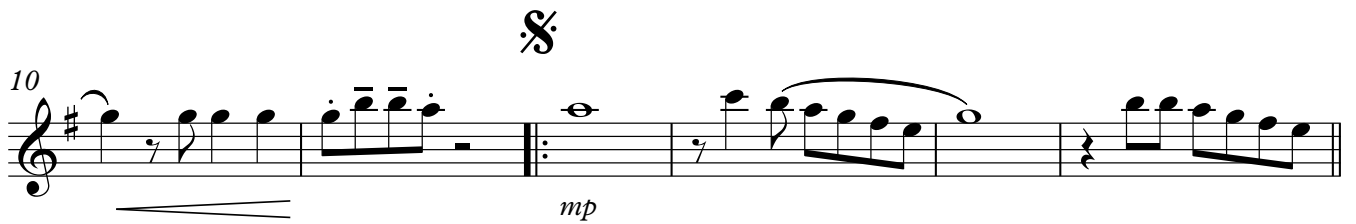
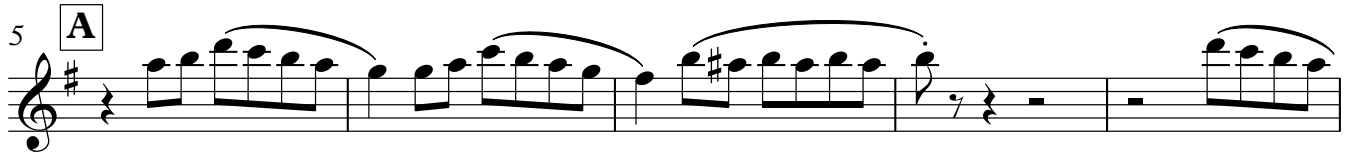
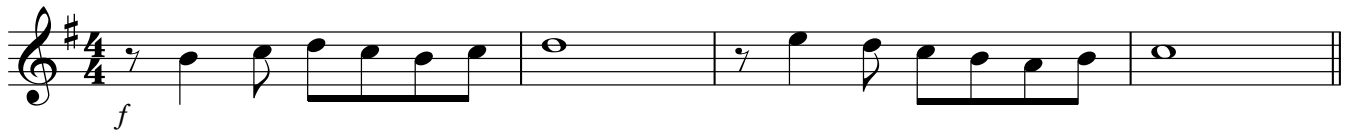
I Saxofone alto

SABIÁ

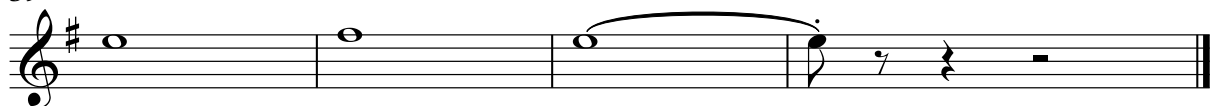
XÓTE

Composição: Luiz Gonzaga
Arranjo: Laudemir Ramos

♩ = 140



Coda ϕ
39



III Saxofone alto

SABIÁ

XÓTE

Composição: Luiz Gonzaga
Arranjo: Laudemir Ramos

♩ = 140

f

5 **A**

10

mp

16 **B**

21 **C**

27 **D**

33 **To Coda** **D.S. al Coda**

Coda ϕ
39

Trompa em Fá

SABIÁ

XÓTE

Composição: Luiz Gonzaga
Arranjo: Laudemir Ramos

♩ = 140

5 **A**



10

15 **B**

20 **C**

25 **D**

30 **To Coda**

36 **D.S. al Coda**

Coda ☉

SABIÁ

XÓTE

I Trompete em Sib

Composição: Luiz Gonzaga
Arranjo: Laudemir Ramos

$\text{♩} = 140$

f

5 **A**

10 *f*

15 **B** 1. *mf*

20 **C** 2. *f*

26 **D** *mf*

32 **To Coda**

36 **D.S. al Coda** *f*

Coda ϕ
39

Contato

ramoslaudemir@gmail.com

SABIÁ

XÓTE

Composição: Luiz Gonzaga
Arranjo: Laudemir Ramos

$\text{♩} = 140$

5 **A**

10 *p*

15 **B** 1.

20 **C** 2. *f* 3

25 **D** *mf*

30 **To Coda**

36 **D.S. al Coda**

Coda ϕ 39

Detailed description: The score is written for Trompete em Sib 3 in 4/4 time with a tempo of 140. It begins with a dynamic of *f*. Section A (measures 5-10) features a melodic line with a key signature change to one sharp (F#) at measure 8. Section B (measures 15-20) includes a first ending bracket. Section C (measures 20-25) starts with a second ending bracket and includes a triplet. Section D (measures 25-30) ends with a *mf* dynamic. The piece concludes with a Coda (measures 39-40) and a *D.S. al Coda* instruction.

Trompete em Sib 2

SABIÁ

XÓTE

Composição: Luiz Gonzaga
Arranjo: Laudemir Ramos

$\text{♩} = 140$

5 **A**

10 *p*

15 **B** 1.

20 *f* **C** 2. 3. 3

25 **D** *mf*

30 **To Coda**

36 **D.S. al Coda**

Coda ϕ

39

I Trombone tenor

SABIÁ

XÓTE

Composição: Luiz Gonzaga
Arranjo: Laudemir Ramos

♩ = 140

f

5 **A**

f

10

p *mf* *mf*

15 **B**

mp

20 **C**

f 3 3

25 **D**

mf

30 **To Coda**

mf *mf* *mf* *mf*

36 **D.S. al Coda**

mf

Coda ☉

mf

II, III Trombone tenor

SABIÁ

XÓTE

Composição: Luiz Gonzaga
Arranjo: Laudemir Ramos

♩ = 140

f

5 **A**

mf

10

p *mf* *mf*

15 **B**

mp

20 **C**

f

25 **D**

mf

30 **To Coda**

mf *mf* *mf* *mf*

36 **D.S. al Coda**

mf

Coda ☺

mf

Trombone baixo

SABIÁ

XÓTE

Composição: Luiz Gonzaga
Arranjo: Laudemir Ramos

♩ = 140

1 *f*

5 **A**

10

15 **B**

20 **C**

24

28 **D**

33 **To Coda** **D.S. al Coda**

Coda ◊
39

Eufônio

SABIÁ

XÓTE

Composição: Luiz Gonzaga
Arranjo: Laudemir Ramos

♩ = 140

f

5 **A**

f



10

p

15 **B**

f

20 **C**

f *mf*

25 **D**

mf

30 **To Coda**

mf

36 **D.S. al Coda**

Coda ☉

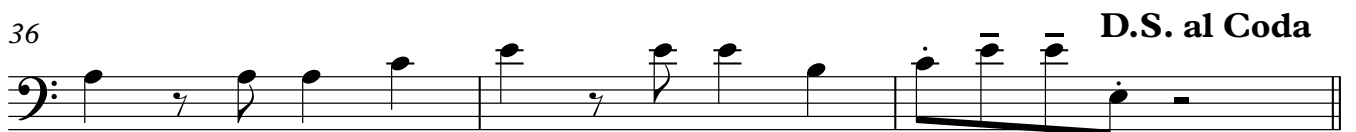
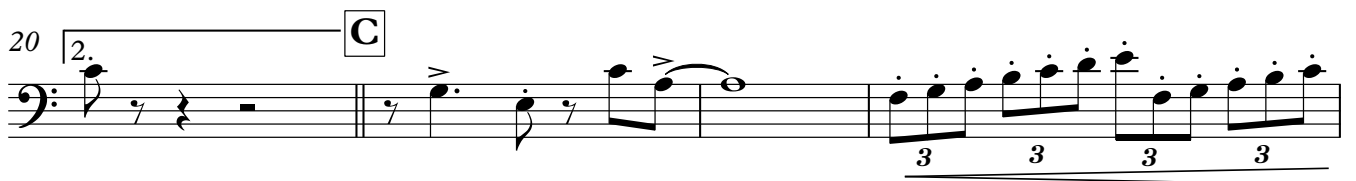
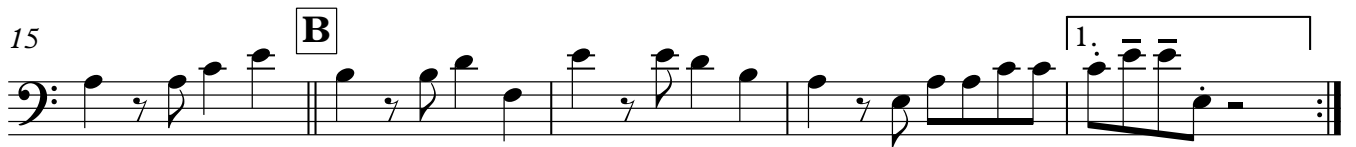
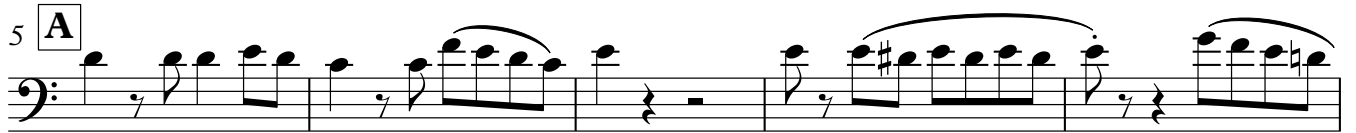
SABIÁ

XÓTE

Sousafone em Sib

Composição: Luiz Gonzaga
Arranjo: Laudemir Ramos

♩ = 140



Coda ϕ
39

