

# CHOPPIN

(Marcha Fúnebre)

♩=80

REGÊNCIA

FLAUTA

REQUINTA in E $\flat$

1 $^{\circ}$ CLARINETE in B $\flat$

2 $^{\circ}$ CLARINETE in B $\flat$

3 $^{\circ}$ CLARINETE in B $\flat$

SAX ALTO

SAX TENOR

SAX BARÍTONO

1 $^{\circ}$ TROMPA in F

2 $^{\circ}$ TROMPA in F

3 $^{\circ}$ TROMPA in F

1 $^{\circ}$ TROMPETE in B $\flat$

2 $^{\circ}$ TROMPETE in B $\flat$

3 $^{\circ}$ TROMPETE in B $\flat$

1 $^{\circ}$ TROMBONE in C

2 $^{\circ}$ TROMBONE in C

3 $^{\circ}$ TROMBONE in C

BOMBARDINO in B $\flat$

BOMBARDINO in C

BARÍTONO in B $\flat$

SOUZAFONE in B $\flat$

SOUZAFONE in E $\flat$

PERCUSSÃO

CAIXA

♩=80

Detailed description: This is a full orchestral score for Chopin's Funeral March. The score is written for a large ensemble including woodwinds, brass, and percussion. The tempo is marked as quarter note = 80. The key signature has one flat (B-flat major or F minor), and the time signature is 4/4. The score is arranged in a standard orchestral layout with parts for Regência, Flauta, Requinta, three Clarinetes, Sax Alto, Sax Tenor, Sax Barítono, three Trompas, three Trompetes, three Trombones, Bombardino in B-flat and C, Barítono, Souzafone in B-flat and E-flat, Percussão, and Caixa. The music is characterized by its somber and dignified tone, typical of Chopin's funeral marches.

8

Flug.

Fl.

E♭ Cl.

Cl.

Cl.

Cl.

A. Sax.

T. Sax.

B. Sax.

Hn.

Hn.

Hn.

Tpt.

Tpt.

Tpt.

Tbn.

Tbn.

Tbn.

Euph.

Euph.

Bar.

Sousa.

Sousa.

Perc.

S. D.

*p*

*p*

*p*

15

Flug.

Fl.

E♭ Cl.

Cl.

Cl.

Cl.

A. Sax.

T. Sax.

B. Sax.

Hn.

Hn.

Hn.

Tpt.

Tpt.

Tpt.

Tbn.

Tbn.

Tbn.

Euph.

Euph.

Bar.

Sousa.

Sousa.

Perc.

S. D.

Detailed description: This is a page of a musical score for a concert band, specifically page 3, measures 15 through 22. The score is for a piece by Chopin. It features 22 staves, each representing a different instrument or section. The instruments listed are Flute (Flug.), Flute (Fl.), E-flat Clarinet (E♭ Cl.), Clarinet (Cl.), Clarinet (Cl.), Clarinet (Cl.), Alto Saxophone (A. Sax.), Tenor Saxophone (T. Sax.), Bass Saxophone (B. Sax.), Horn (Hn.), Horn (Hn.), Horn (Hn.), Trumpet (Tpt.), Trumpet (Tpt.), Trumpet (Tpt.), Trombone (Tbn.), Trombone (Tbn.), Trombone (Tbn.), Euphonium (Euph.), Euphonium (Euph.), Baritone (Bar.), Sousaphone (Sousa.), Sousaphone (Sousa.), and Percussion (Perc.). The Snare Drum (S. D.) part is also present. The music is written in a key signature of one flat (B-flat major or D minor) and a common time signature. The notation includes various rhythmic values, accidentals, and phrasing slurs. The percussion part is indicated by a double bar line with a vertical line through it, and the snare drum part is indicated by a double bar line with two vertical lines through it. The page number '15' is written at the top left of the first staff.

23

Flug.  
Fl.  
Eb Cl.  
Cl.  
Cl.  
Cl.  
A. Sax.  
T. Sax.  
B. Sax.  
Hn.  
Hn.  
Hn.  
Tpt.  
Tpt.  
Tpt.  
Tbn.  
Tbn.  
Tbn.  
Euph.  
Euph.  
Bar.  
Sousa.  
Sousa.  
Perc.  
S. D.

*ppp*  
*ppp*  
*ppp*  
*ppp*  
*pp*  
*pp*

Detailed description: This is a page of a musical score for a concert band, numbered 4 and titled 'CHOPPIN'. The page is numbered 23 at the top left. The score is arranged in a standard concert band layout with multiple staves for each instrument family. The instruments listed on the left are: Flute (Flug.), Flute (Fl.), E-flat Clarinet (Eb Cl.), Clarinet (Cl.), Clarinet (Cl.), Clarinet (Cl.), Alto Saxophone (A. Sax.), Tenor Saxophone (T. Sax.), Bass Saxophone (B. Sax.), Horn (Hn.), Horn (Hn.), Horn (Hn.), Trumpet (Tpt.), Trumpet (Tpt.), Trumpet (Tpt.), Trombone (Tbn.), Trombone (Tbn.), Trombone (Tbn.), Euphonium (Euph.), Euphonium (Euph.), Baritone (Bar.), Sousaphone (Sousa.), Sousaphone (Sousa.), Percussion (Perc.), and Snare Drum (S. D.). The score features various musical notations including notes, rests, slurs, and dynamic markings such as *ppp* and *pp*. The key signature is one flat (B-flat major or D minor), and the time signature is 4/4. The music is written in a clear, professional notation style.

29

Flug.  
Fl.  
Eb Cl.  
Cl.  
Cl.  
Cl.  
A. Sax.  
T. Sax.  
B. Sax.  
Hn.  
Hn.  
Hn.  
Tpt.  
Tpt.  
Tpt.  
Tbn.  
Tbn.  
Tbn.  
Euph.  
Euph.  
Bar.  
Sousa.  
Sousa.  
Perc.  
S. D.

Detailed description: This is a page of a musical score for a concert band, numbered 29. The score is for Chopin's work. It features 21 staves, each labeled with an instrument. The instruments are: Flugelhorn (Flug.), Flute (Fl.), E-flat Clarinet (Eb Cl.), Clarinet (Cl.), Clarinet (Cl.), Clarinet (Cl.), Alto Saxophone (A. Sax.), Tenor Saxophone (T. Sax.), Bass Saxophone (B. Sax.), Horn (Hn.), Horn (Hn.), Horn (Hn.), Trumpet (Tpt.), Trumpet (Tpt.), Trumpet (Tpt.), Trombone (Tbn.), Trombone (Tbn.), Trombone (Tbn.), Euphonium (Euph.), Euphonium (Euph.), Baritone (Bar.), Sousaphone (Sousa.), Sousaphone (Sousa.), Percussion (Perc.), and Snare Drum (S. D.). The score is written in a common time signature (C) and a key signature of one flat (B-flat). The music consists of various rhythmic patterns, including eighth and sixteenth notes, and rests. The notation includes stems, beams, and various articulation marks. The page number '29' is located at the top left of the first staff.

35

Flug.  
Fl.  
Eb Cl.  
Cl.  
Cl.  
Cl.  
A. Sax.  
T. Sax.  
B. Sax.  
Hn.  
Hn.  
Hn.  
Tpt.  
Tpt.  
Tpt.  
Tbn.  
Tbn.  
Tbn.  
Euph.  
Euph.  
Bar.  
Sousa.  
Sousa.  
Perc.  
S. D.

*ppp*

*ppp*

*ppp*

*ppp*

*ppp*

*ppp*

41

Flug.

Fl.

E♭ Cl.

Cl.

Cl.

Cl.

A. Sax.

T. Sax.

B. Sax.

Hn.

Hn.

Hn.

Tpt.

Tpt.

Tpt.

Tbn.

Tbn.

Tbn.

Euph.

Euph.

Bar.

Sousa.

Sousa.

Perc.

S. D.

44

Flug.

Fl.

E♭ Cl.

Cl.

Cl.

Cl.

A. Sax.

T. Sax.

B. Sax.

Hn.

Hn.

Hn.

Tpt.

Tpt.

Tpt.

Tbn.

Tbn.

Tbn.

Euph.

Euph.

Bar.

Sousa.

Sousa.

Perc.

S. D.

1.

2.

1.

2.

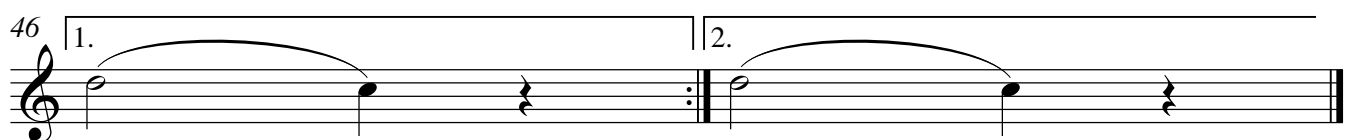


Regencia

# CHOPPIN

(Marcha Fúnebre)

♩=80

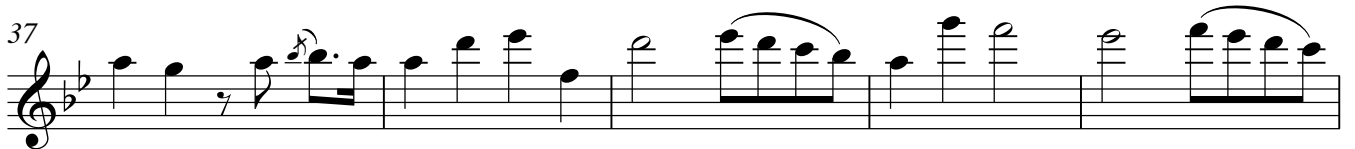
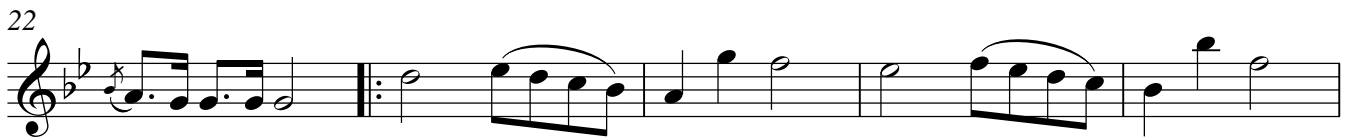
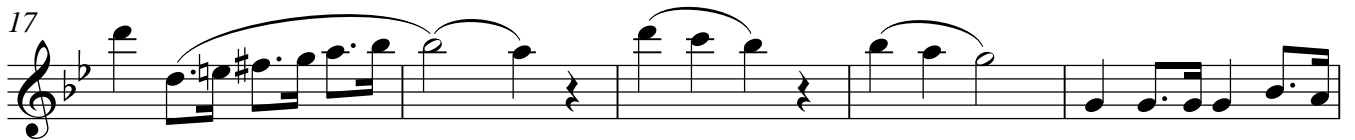


Flauta

# CHOPPIN

(Marcha Fúnebre)

♩=80

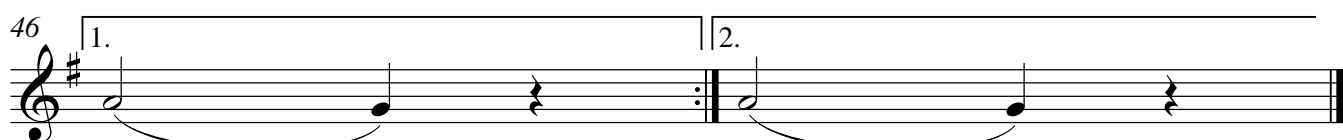
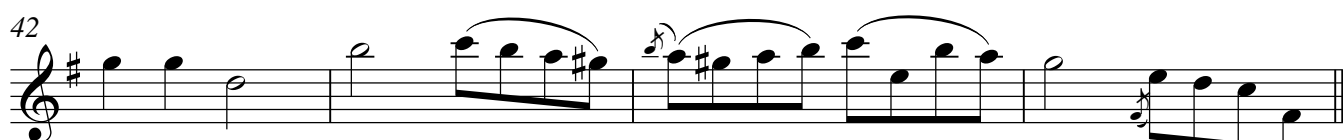
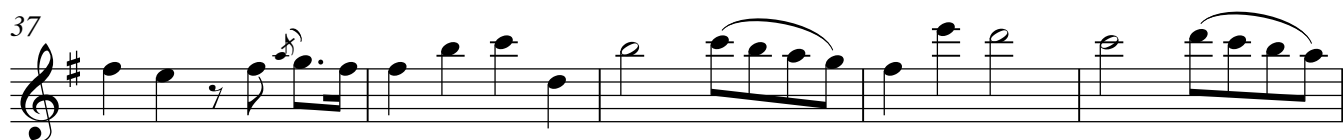
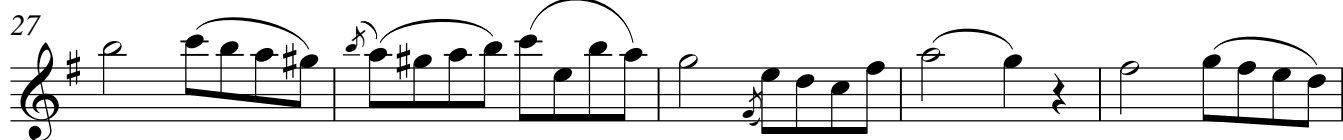
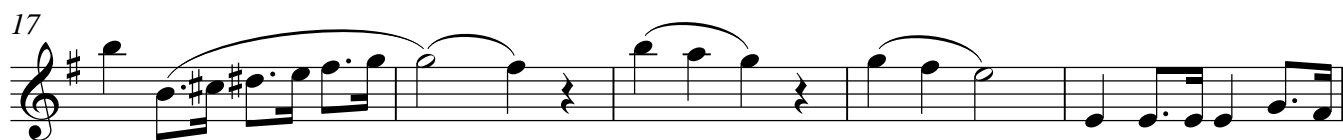
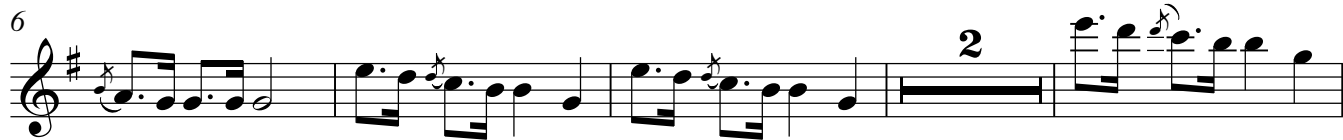


Requinta

# CHOPPIN

(Marcha Fúnebre)

♩=80

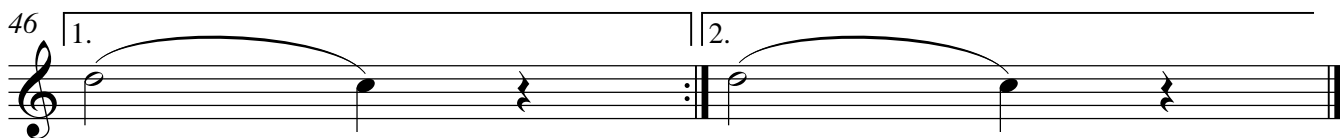
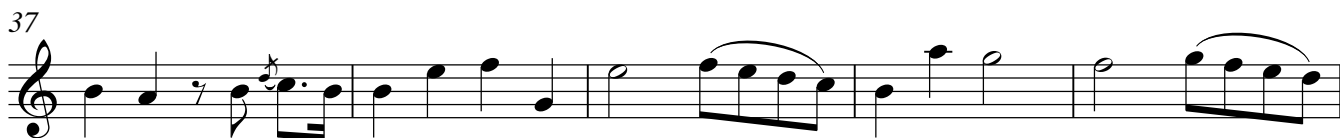
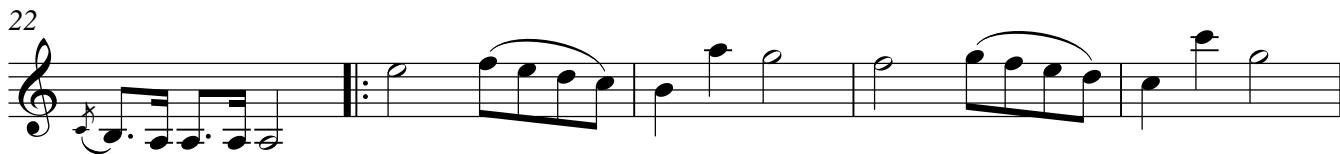
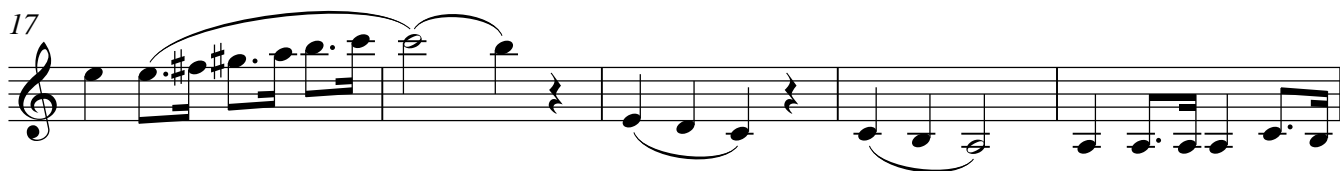
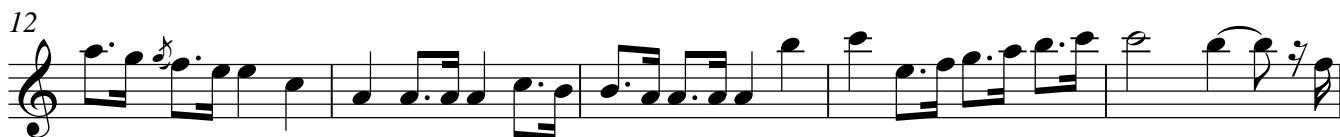


I Clarinete

# CHOPPIN

(Marcha Fúnebre)

♩=80

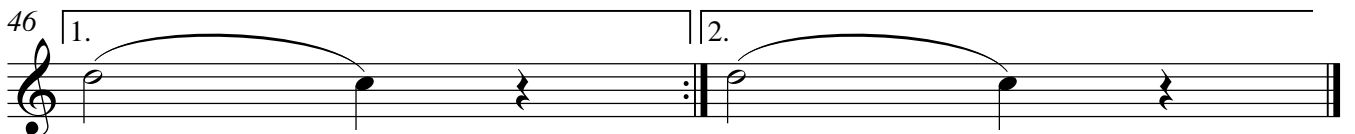
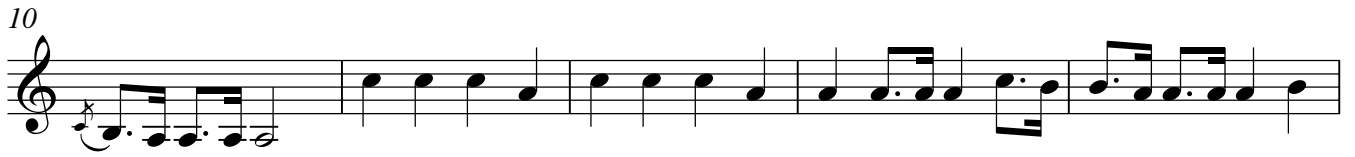


II Clarinete

# CHOPPIN

(Marcha Fúnebre)

♩=80

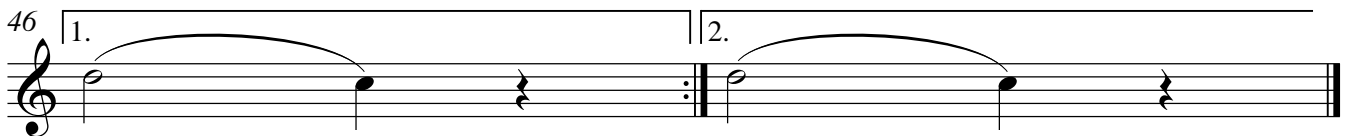
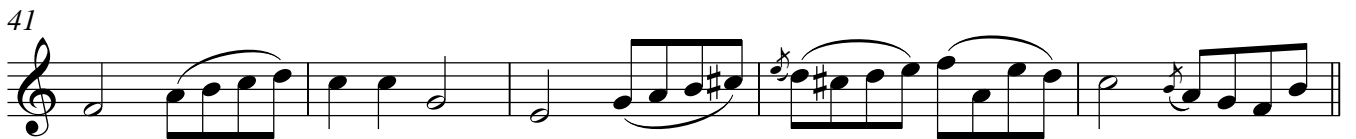


III Clarinete

# CHOPPIN

(Marcha Fúnebre)

$\text{♩} = 80$



Sax Alto

# CHOPPIN

(Marcha Fúnebre)

♩=80

6

2

12

17

4

25

30

36

41

46

1.

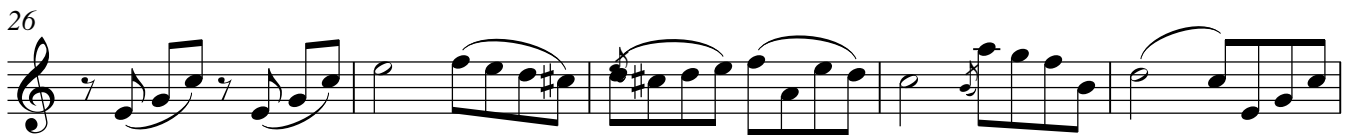
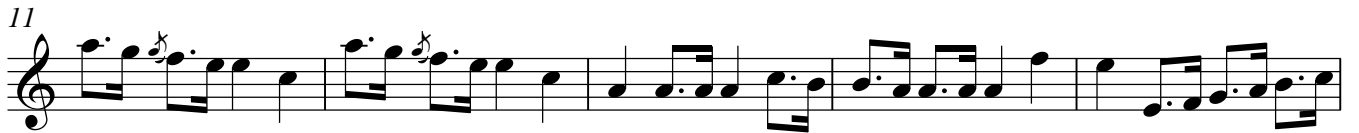
2.

Sax Tenor

# CHOPPIN

(Marcha Fúnebre)

♩=80





Sax Barítono

# CHOPPIN

(Marcha Fúnebre)

♩=80



II Trompa F

# CHOPPIN

(Marcha Fúnebre)

♩=80



I Trompa F

# CHOPPIN

(Marcha Fúnebre)

♩=80



III Trompa F

# CHOPPIN

(Marcha Fúnebre)

♩=80



I Trompete

# CHOPPIN

(Marcha Fúnebre)

$\text{♩} = 80$

6 2

12 *p*

17 4 *ppp*

27

33

38 *ppp*

44 1. 2.

II Trompete

# CHOPPIN

(Marcha Fúnebre)

$\text{♩} = 80$

6 2

12 *p*

17 4 *ppp*

27

33

38 *ppp*

44 1. 2.

III Trompete

# CHOPPIN

(Marcha Fúnebre)

$\text{♩} = 80$

6 2

12 *p*

17 4 *ppp*

27

33

38 *ppp*

44 1. 2.

I Trombone

# CHOPPIN

(Marcha Fúnebre)

♩=80

6

11

16

21

*ppp*

28

33

37

*ppp*

43

46

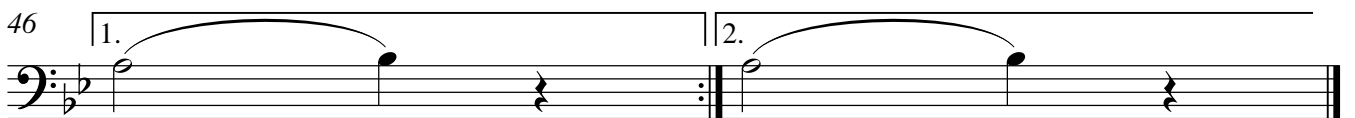
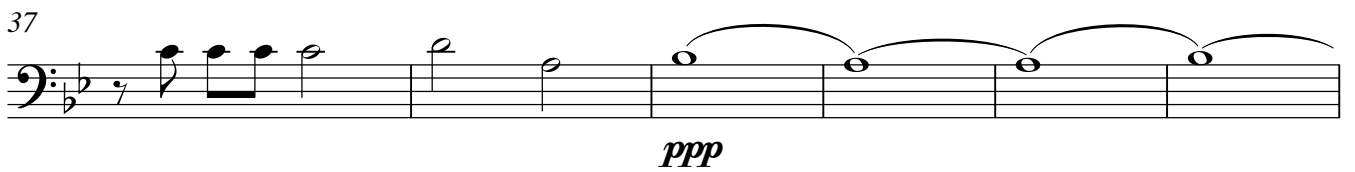
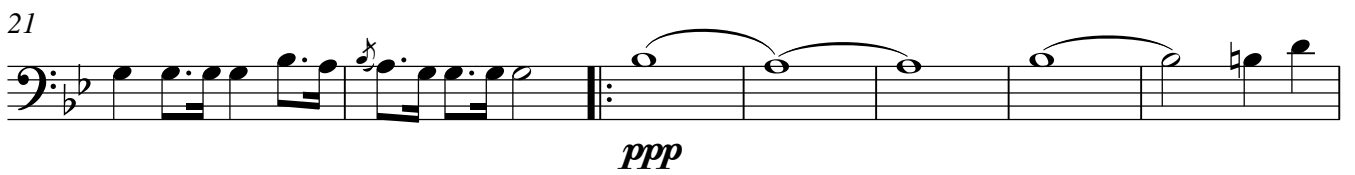


II Trombone

# CHOPPIN

(Marcha Fúnebre)

♩=80

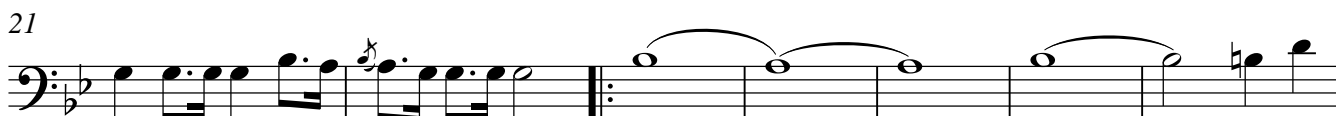
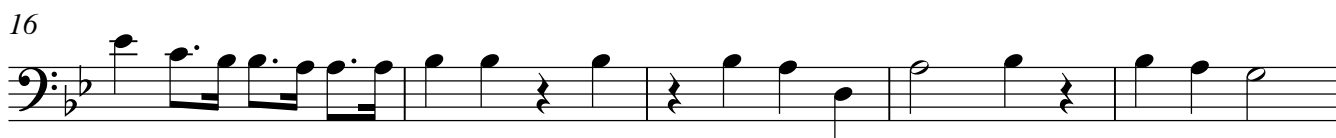


III Trombone

# CHOPPIN

(Marcha Fúnebre)

♩=80



*ppp*



*ppp*



Bombardino C

# CHOPPIN

(Marcha Fúnebre)

♩=80



Bombardino Bb

# CHOPPIN

(Marcha Fúnebre)

♩=80



Barítono Bb

# CHOPPIN

(Marcha Fúnebre)

♩=80



Tuba Bb

# CHOPPIN

(Marcha Fúnebre)

♩=80



7



13



19



24



29



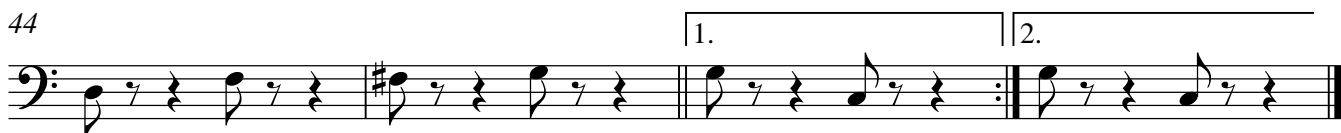
34



40



44



Tuba Eb

# CHOPPIN

(Marcha Fúnebre)

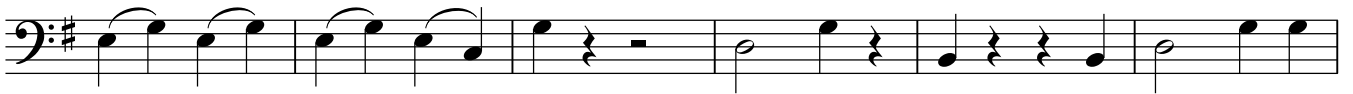
♩=80



7



13



19



*pp*

24



29



34



40



44



Percussão

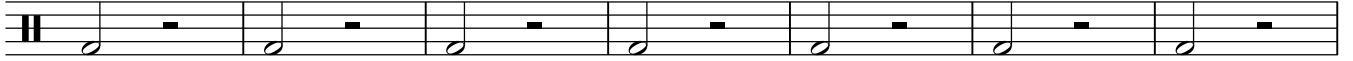
# CHOPPIN

(Marcha Fúnebre)

♩=80



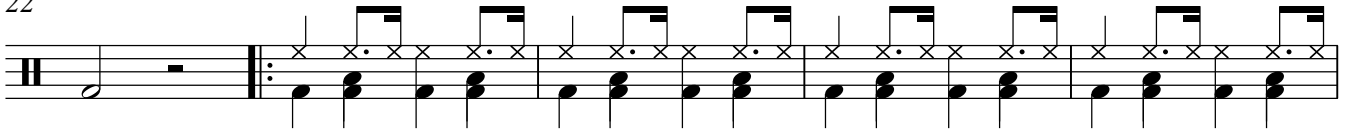
8



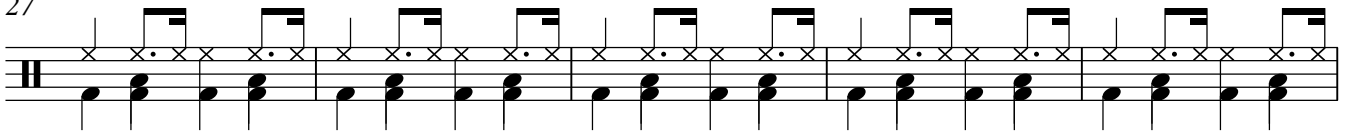
15



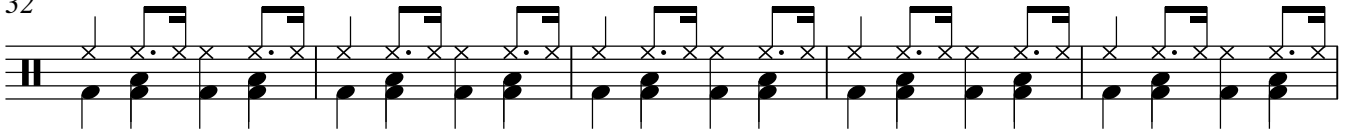
22



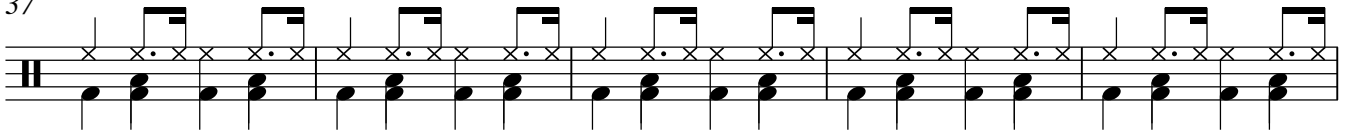
27



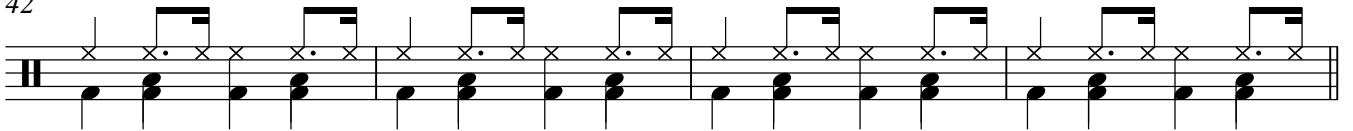
32



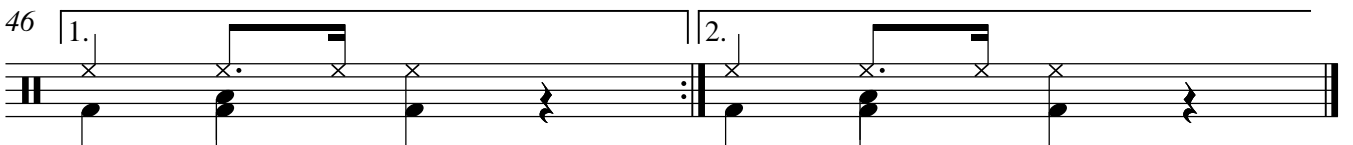
37



42



46





Caixa

# CHOPPIN

(Marcha Fúnebre)

♩=80



6



11



16



21



27



33



39



44

