

HINO NACIONAL FINLANDÊS

Flauta

Clarinete B \flat 1

Clarinete B \flat 2

Clarinete B \flat 3

Sax-Alto E \flat

Sax-Tenor B \flat

Trompete B \flat 1

Trompete B \flat 2

Trompete B \flat 3

Trompa E \flat 1

Trompa E \flat 2

Trompa E \flat 3

Trombone 1

Trombone 2

Trombone 3

Bombardino

Tuba C

$\bullet = 90$

Flauta

Clarinete B \flat 1

Clarinete B \flat 2

Clarinete B \flat 3

Sax-Alto E \flat

Sax-Tenor B \flat

Trompete B \flat 1

Trompete B \flat 2

Trompete B \flat 3

Trompa E \flat 1

Trompa E \flat 2

Trompa E \flat 3

Trombone 1

Trombone 2

Trombone 3

Bombardino

Tuba C

HINO NACIONAL FINLANDÊS

Flauta



HINO NACIONAL FINLANDÊS

Clarinete B \flat 1



HINO NACIONAL FINLANDÊS

Clarinete B \flat 2



HINO NACIONAL FINLANDÊS

Clarinete B \flat 3

The first staff of music begins with a treble clef, a key signature of three sharps (F#, C#, G#), and a common time signature (C). A tempo marking indicates a quarter note equals 90 (♩ = 90). The melody starts with a quarter rest, followed by a series of quarter and eighth notes, including a quarter rest, leading to a quarter note on the next line of the staff.

The second staff of music continues the melody from the first staff. It begins with a measure containing a quarter rest and a quarter note on the next line of the staff. The melody continues with a series of quarter notes, including a quarter rest, and concludes with a quarter note on the next line of the staff.

The third staff of music concludes the melody. It begins with a measure containing a quarter rest and a quarter note on the next line of the staff. The melody continues with a series of quarter notes, including a quarter rest, and concludes with a quarter note on the next line of the staff.

HINO NACIONAL FINLANDÊS

Sax-Alto E \flat



HINO NACIONAL FINLANDÊS

Sax-Tenor B \flat

$\bullet = 90$



4



7



The image shows the musical score for the Finnish National Anthem, arranged for Sax-Tenor B \flat . The score is written on a single staff in treble clef with a key signature of three sharps (F#, C#, G#) and a common time signature (C). The tempo is marked as $\bullet = 90$. The score is divided into three systems. The first system starts with a common time signature and contains the first five measures. The second system starts with a measure rest for four measures and contains the next five measures. The third system starts with a measure rest for seven measures and contains the final five measures, ending with a double bar line. The notes are: C4, D4, E4, F#4, G#4, A4, B4, C5, B4, A4, G#4, F#4, E4, D4, C4.

HINO NACIONAL FINLANDÊS

Trompete B \flat 1



HINO NACIONAL FINLANDÊS

Trompete B \flat 2



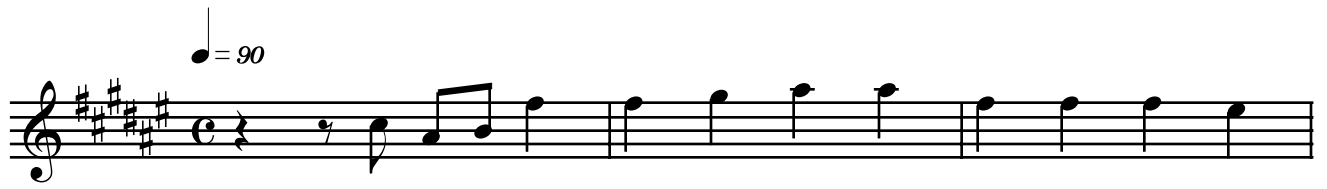
HINO NACIONAL FINLANDÊS

Trompete B \flat 3



HINO NACIONAL FINLANDÊS

Trompa E \flat 1



HINO NACIONAL FINLANDÊS

Trompa E \flat 2



HINO NACIONAL FINLANDÊS

Trompa E \flat 3



HINO NACIONAL FINLANDÊS

Trombone 1



HINO NACIONAL FINLANDÊS

Trombone 2



HINO NACIONAL FINLANDÊS

Trombone 3



HINO NACIONAL FINLANDÊS

Bombardino C



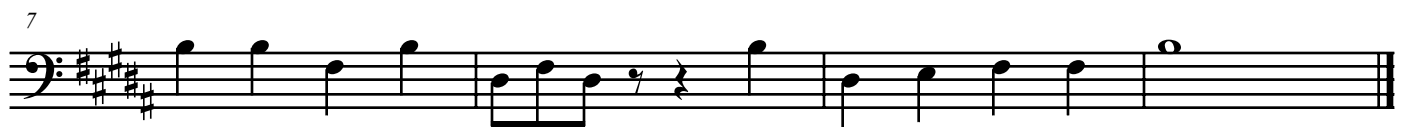
HINO NACIONAL FINLANDÊS

Bombardino B \flat



HINO NACIONAL FINLANDÊS

Tuba B \flat



HINO NACIONAL FINLANDÊS

Tuba C



HINO NACIONAL FINLANDÊS

Tuba E \flat

♩ = 90



4



7

