

PITANGA NO CHORO

(Dedicado ao amigo Jenildo Maia do clarinete)

Rafael M.Henrique

♩ = 90

Clarinete em B \flat

Piano

Pandeiro

Measures 1-4. Clarinet in B \flat (treble clef) starts with a whole rest in measure 1, then plays a melodic line. Piano (grand staff) provides harmonic support with chords and single notes. Pandeiro plays a rhythmic pattern of eighth notes with accents.

5

Cl. em B \flat

Pno

Pand.

Measures 5-8. Clarinet in B \flat continues the melodic line. Piano accompaniment continues with chords and single notes. Pandeiro maintains the rhythmic pattern.

9

Cl. em B \flat

Pno

Pand.

Measures 9-12. Clarinet in B \flat continues the melodic line. Piano accompaniment continues with chords and single notes. Pandeiro maintains the rhythmic pattern.

14

Cl. em B \flat

Pno

Pand.

19

Cl. em B \flat

Pno

Pand.

24

Cl. em B \flat

Pno

Pand.

29

Cl. em B \flat

Pno

Pand.

34

Cl. em B \flat

Pno

Pand.

39

Cl. em B \flat

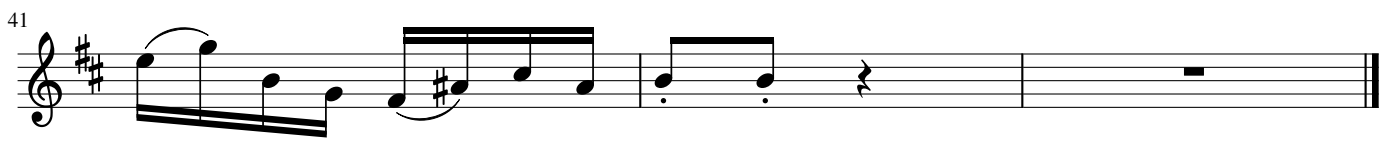
Pno

Pand.

Clarinete em B \flat PITANGA NO CHORO

(Dedicado ao amigo Jenildo Maia do clarinete)

Rafael M.Henrique



Piano

PITANGA NO CHORO

(Dedicado ao amigo Jenildo Maia do clarinete)

Rafael M.Henrique

♩ = 90

Measures 1-6 of the piece. The music is in 2/4 time. Measure 1 is a whole rest. Measure 2 starts with a piano (*p*) dynamic and features a series of chords in the right hand and a melodic line in the left hand. The key signature has one sharp (F#).

7

Measures 7-13. The right hand continues with chords, and the left hand has a steady eighth-note bass line. Measure 10 contains a whole rest in the right hand.

14

Measures 14-20. The piece continues with a consistent rhythmic pattern of chords and a bass line. Measure 17 features a whole rest in the right hand.

21

Measures 21-27. The musical texture remains consistent with the previous sections, featuring chords in the right hand and a melodic bass line in the left hand.

28

Measures 28-34. The final section of the page shows the continuation of the piece, ending with a final chord in the right hand and a melodic phrase in the left hand.

Musical score for piano, measures 35-40. The score is written for two staves: Treble Clef (top) and Bass Clef (bottom). The music consists of chords and single notes. Measure 35: Treble clef has two chords (F4, A4) and (F4, A4, C5); Bass clef has two notes (F3, A3). Measure 36: Treble clef has two chords (F4, A4, C5) and (F4, A4, C5); Bass clef has two notes (F3, A3). Measure 37: Treble clef has two chords (F4, A4, C5) and (F4, A4, C5); Bass clef has two notes (F3, A3). Measure 38: Treble clef has two chords (F4, A4, C5) and (F4, A4, C5); Bass clef has two notes (F3, A3). Measure 39: Treble clef has a whole rest; Bass clef has a whole rest. Measure 40: Treble clef has two chords (F4, A4, C5) and (F4, A4, C5); Bass clef has two notes (F3, A3) with a fermata over the final note.

