

# A Banda

Chico Buarque de Holanda

Arr: Antônio Limeira

♩ = 116

Clarinet in B $\flat$  1

Clarinet in B $\flat$  2

Clarinet in B $\flat$  3

Alto Sax.

Tenor Sax.

Trumpet in B $\flat$  1

Trumpet in B $\flat$  2

Trumpet in B $\flat$  3

Horn in F

Tenor Trombone 1

Tenor Trombone 2

Euphonium

Tuba

B $\flat$  Cl. 1  
B $\flat$  Cl. 2  
B $\flat$  Cl. 3  
A. Sx.  
T. Sx.

This block contains the first five staves of the musical score. From top to bottom, they are: B $\flat$  Clarinet 1, B $\flat$  Clarinet 2, B $\flat$  Clarinet 3, Alto Saxophone, and Tenor Saxophone. Each staff begins with a treble clef and a key signature of one flat. A first ending bracket with the number 8 is placed above the first four measures of each staff. A repeat sign with first and second endings is located at the end of the first four measures. The notation includes eighth and sixteenth notes, rests, and slurs.

B $\flat$  Tpt. 1  
B $\flat$  Tpt. 2  
B $\flat$  Tpt. 3  
Hn.  
T. Tbn. 1  
T. Tbn. 2  
Euph.  
Tuba

This block contains the remaining seven staves of the musical score. From top to bottom, they are: B $\flat$  Trumpet 1, B $\flat$  Trumpet 2, B $\flat$  Trumpet 3, Horn, Tenor Trombone 1, Tenor Trombone 2, Euphonium, and Tuba. The first three staves use a treble clef, while the last four use a bass clef. A first ending bracket with the number 8 is placed above the first four measures of the first three staves. A repeat sign with first and second endings is located at the end of the first four measures of each staff. The notation includes eighth and sixteenth notes, rests, and slurs.

16

B♭ Cl. 1

B♭ Cl. 2

B♭ Cl. 3

A. Sx.

T. Sx.

16

B♭ Tpt. 1

B♭ Tpt. 2

B♭ Tpt. 3

Hn.

T. Tbn. 1

T. Tbn. 2

Euph.

Tuba

24

B♭ Cl. 1

B♭ Cl. 2

B♭ Cl. 3

A. Sx.

T. Sx.

This section of the score covers measures 24 through 31. It features three staves for B♭ Clarinets (1, 2, and 3), one staff for Alto Saxophone (A. Sx.), and one staff for Tenor Saxophone (T. Sx.). The clarinet parts play a rhythmic eighth-note melody with some slurs. The saxophone parts provide harmonic support with sustained notes and chords. The key signature has one flat (B♭), and the time signature is 4/4.

24

B♭ Tpt. 1

B♭ Tpt. 2

B♭ Tpt. 3

Hn.

T. Tbn. 1

T. Tbn. 2

Euph.

Tuba

This section of the score covers measures 24 through 31. It features three staves for B♭ Trumpets (1, 2, and 3), one staff for Horn (Hn.), one staff for Tenor Trombone 1 (T. Tbn. 1), one staff for Tenor Trombone 2 (T. Tbn. 2), one staff for Euphonium (Euph.), and one staff for Tuba. The trumpet parts play a rhythmic eighth-note melody. The horn and tuba parts provide harmonic support with sustained notes and chords. The key signature has one flat (B♭), and the time signature is 4/4.

32

B $\flat$  Cl. 1

B $\flat$  Cl. 2

B $\flat$  Cl. 3

A. Sx.

T. Sx.

Detailed description: This system contains five staves for woodwind instruments. The first three staves are for B $\flat$  Clarinets 1, 2, and 3, which play a melodic line with eighth and sixteenth notes. The fourth staff is for Alto Saxophone (A. Sx.) and the fifth for Tenor Saxophone (T. Sx.), both playing a similar melodic line. Measure 32 is marked with a '32'. Measures 33-35 feature triplets indicated by a '3' over a bracket. Slurs are used to group notes across measures.

32

B $\flat$  Tpt. 1

B $\flat$  Tpt. 2

B $\flat$  Tpt. 3

Hn.

T. Tbn. 1

T. Tbn. 2

Euph.

Tuba

Detailed description: This system contains seven staves for brass instruments. The first three staves are for B $\flat$  Trumpets 1, 2, and 3, playing a melodic line. The fourth staff is for Horn (Hn.), playing a similar melodic line. The fifth and sixth staves are for Tenor Trombones 1 and 2, playing a lower melodic line. The seventh staff is for Euphonium (Euph.), playing a rhythmic accompaniment. The eighth staff is for Tuba, playing a bass line. Measure 32 is marked with a '32'. Measures 33-35 feature triplets indicated by a '3' over a bracket. Slurs are used to group notes across measures.

40

B♭ Cl. 1

B♭ Cl. 2

B♭ Cl. 3

A. Sx.

T. Sx.

B♭ Tpt. 1

B♭ Tpt. 2

B♭ Tpt. 3

Hn.

T. Tbn. 1

T. Tbn. 2

Euph.

Tuba

Detailed description: This is a page of a musical score for a band, labeled 'A Banda' and page number '6'. The score covers measures 40 through 47. It features ten staves of music. The top five staves are for woodwinds and saxophones: three B♭ Clarinets (1, 2, 3), Alto Saxophone (A. Sx.), and Tenor Saxophone (T. Sx.). The bottom five staves are for brass instruments: three B♭ Trumpets (1, 2, 3), Horn (Hn.), two Tenor Trombones (1, 2), Euphonium (Euph.), and Tuba. The music is written in a key signature of two flats (B♭ major or D minor) and a 2/4 time signature. The woodwinds and saxophones play a rhythmic melody with eighth and sixteenth notes, often in pairs. The brass instruments provide a harmonic accompaniment with a mix of quarter, eighth, and sixteenth notes, including some sustained notes and rests. The score is marked with measure numbers 40 through 47 at the beginning of each staff.

48

B $\flat$  Cl. 1

B $\flat$  Cl. 2

B $\flat$  Cl. 3

A. Sx.

T. Sx.

48

B $\flat$  Tpt. 1

B $\flat$  Tpt. 2

B $\flat$  Tpt. 3

Hn.

T. Tbn. 1

T. Tbn. 2

Euph.

Tuba

56

B $\flat$  Cl. 1

B $\flat$  Cl. 2

B $\flat$  Cl. 3

A. Sx.

T. Sx.

This system contains five staves for woodwinds. The first three staves are for B $\flat$  Clarinets 1, 2, and 3. The fourth staff is for Alto Saxophone (A. Sx.) and the fifth for Tenor Saxophone (T. Sx.). The music is in 2/4 time with a key signature of one flat. The woodwinds play a melodic line with eighth and sixteenth notes, featuring a key signature change to two flats in measure 59. The saxophones play a rhythmic accompaniment of eighth notes.

56

B $\flat$  Tpt. 1

B $\flat$  Tpt. 2

B $\flat$  Tpt. 3

Hn.

T. Tbn. 1

T. Tbn. 2

Euph.

Tuba

This system contains seven staves for brass instruments. The first three staves are for B $\flat$  Trumpets 1, 2, and 3. The fourth staff is for Horns (Hn.). The fifth and sixth staves are for Tenor Trombones 1 and 2. The seventh staff is for Euphonium (Euph.) and the eighth for Tuba. The trumpets and horns play a melodic line similar to the woodwinds, with a key signature change to two flats in measure 59. The trombones, euphonium, and tuba play a harmonic accompaniment of half notes.

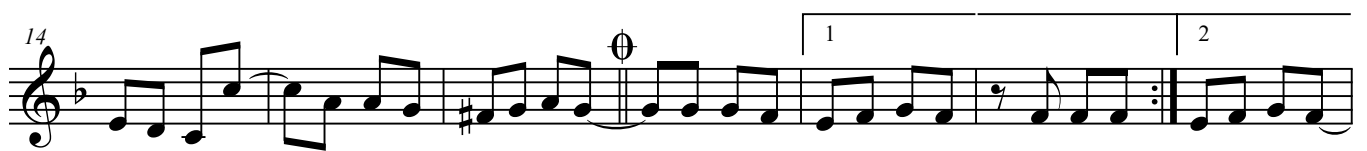


# A Banda

1ª Clarinete

Chico Buarque de Holanda  
Arr: Antônio Limeira

♩ = 116



2ª Clarinete

# A Banda

Chico Buarque de Holanda  
Arr: Antônio Limeira

♩ = 116

7

14

21

28

35

42

49

56

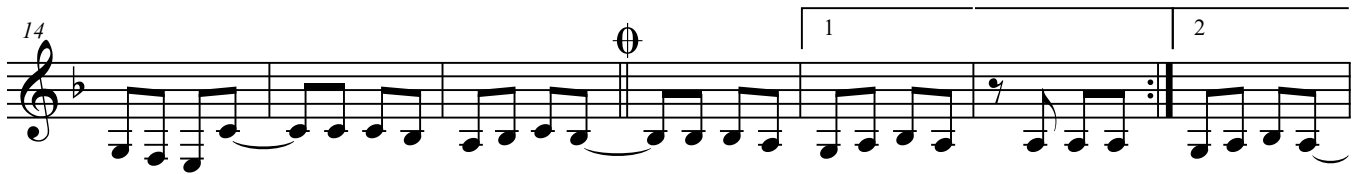
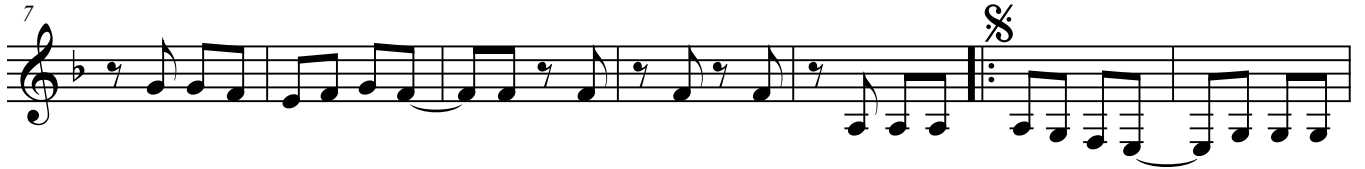
# A Banda

3ª Clarinete

Chico Buarque de Holanda

Arr: Antônio Limeira

♩ = 116



# A Banda

Chico Buarque de Holanda  
Arr: Antônio Limeira

♩ = 116

The musical score for Sax Alto, titled "A Banda" by Chico Buarque de Holanda and arranged by Antônio Limeira, is presented in 2/4 time with a tempo of 116 beats per minute. The piece is written in G major and consists of ten staves of music. The first staff begins with a treble clef and a key signature of one sharp (F#). The initial notation includes chords and quarter notes. The eighth measure marks the start of a melodic line. The fifteenth measure features a first ending, followed by a second ending. The score includes various musical notations such as ties, slurs, repeat signs, and first/second endings. The piece concludes with a final cadence in the tenth staff.

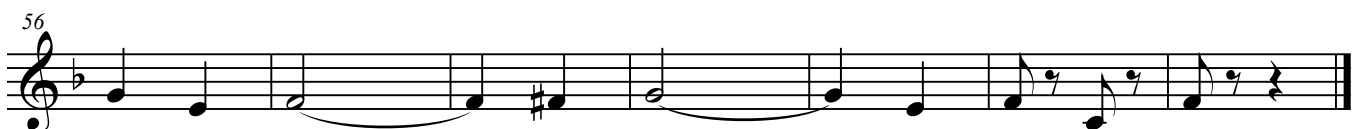
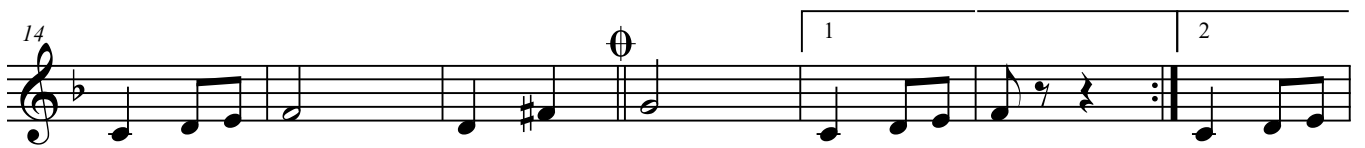
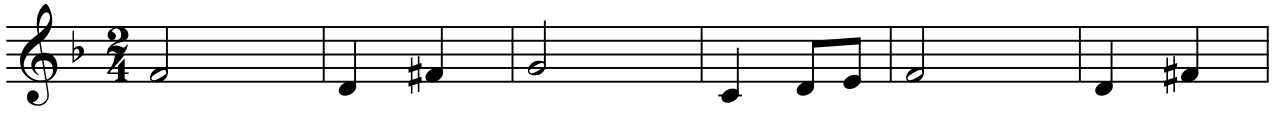
# A Banda

Sax Tenor

Chico Buarque de Holanda

Arr: Antônio Limeira

♩ = 116



1º Trompete

# A Banda

Chico Buarque de Holanda  
Arr: Antônio Limeira

♩ = 116

7

14

21

28

35

42

49

56

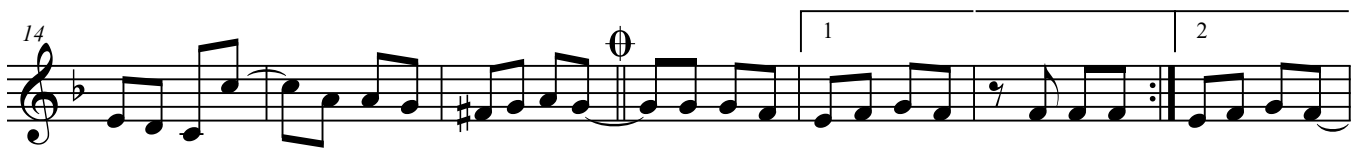
# A Banda

2° Trompete

Chico Buarque de Holanda

Arr: Antônio Limeira

♩ = 116

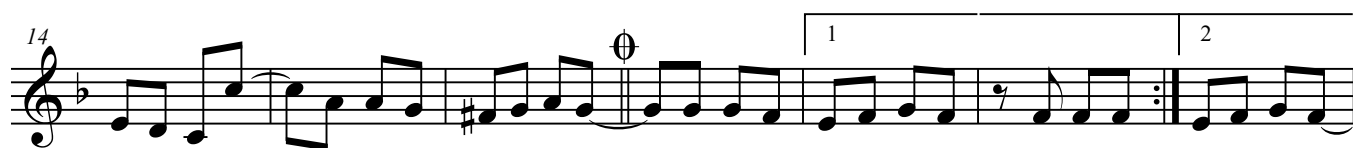


3° Trompete

# A Banda

Chico Buarque de Holanda  
Arr: Antônio Limeira

♩ = 116





1,2 Horn F

# A Banda

Chico Buarque de Holanda  
Arr: Antônio Limeira

♩ = 116

7

14

21

28

35

42

49

56

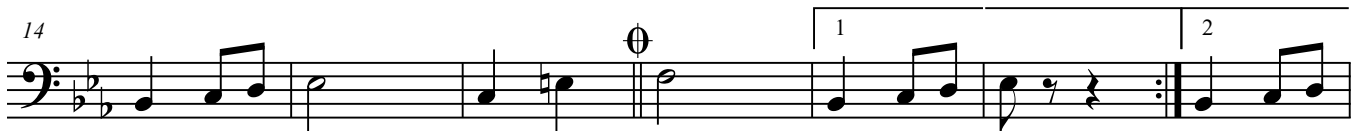
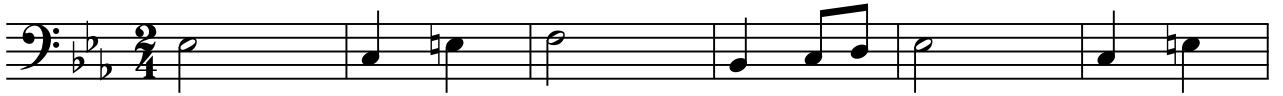
# A Banda

1° Trombone

Chico Buarque de Holanda

Arr: Antônio Limeira

♩ = 116

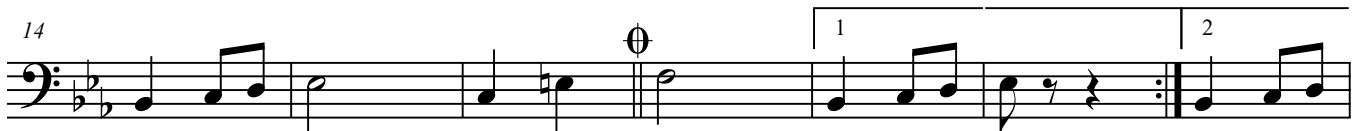
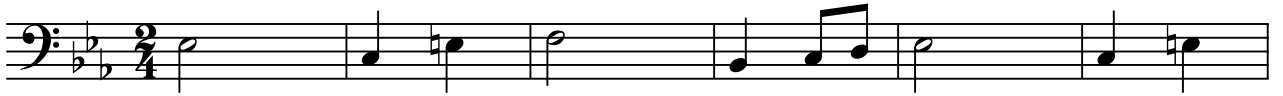


# A Banda

2° Trombone

Chico Buarque de Holanda  
Arr: Antônio Limeira

♩ = 116



Bombardino

# A Banda

Chico Buarque de Holanda  
Arr: Antônio Limeira

♩ = 116

7

14

21

28

35

42

49

56

Tuba Bb

# A Banda

Chico Buarque de Holanda

Arr: Antônio Limeira

♩ = 116

