

Maestro Bacalhau

# BICENTENÁRIO DA INDEPENDÊNCIA DO BRASIL

Flauta  
Clarinete B $\flat$  1  
Clarinete B $\flat$  2  
Clarinete B $\flat$  3  
Sax Alto E $\flat$   
Sax Tenor B $\flat$   
Trompa F 1  
Trompa F 2  
Trompa F 3  
Trompete B $\flat$  1  
Trompete B $\flat$  2  
Trompete B $\flat$  3  
Trombone 1  
Trombone 2  
Trombone 3  
Bombardino B $\flat$   
Tuba B $\flat$   
Contrabaixo  
Caixa  
Bombo  
Pratos

# BICENTENÁRIO DA INDEPENDÊNCIA DO BRASIL

[Dobrado]

Maestro Bacalhau

$\text{♩} = 112$

Flauta

Clarinete Bb 1

Clarinete Bb 2

Clarinete Bb 3

Sax Alto Eb

Sax Tenor Bb

Trompa F 1

Trompa F 2

Trompa F 3

Trompete Bb 1

Trompete Bb 2

Trompete Bb 3

Trombone 1

Trombone 2

Trombone 3

Bombardino Bb

Tuba Bb

Contrabaixo *pizz.*

Caixa/tarola

Pratos/Bombo

This page of a musical score, numbered 3 in the top right corner, contains the following parts:

- Fl.** (Flute): Treble clef, starting with a triplet of eighth notes. A *p* dynamic marking is present at the end of the line.
- Cl. 1, 2, 3** (Clarinets): Treble clef, starting with a triplet of eighth notes. A *p* dynamic marking is present at the end of the line.
- Sax. al.** (Saxophone Alto): Treble clef, starting with a triplet of eighth notes. A *p* dynamic marking is present at the end of the line.
- Sax. ten.** (Saxophone Tenor): Treble clef, starting with a triplet of eighth notes. A *p* dynamic marking is present at the end of the line.
- Tr. 1, 2, 3** (Trumpets): Treble clef, playing a rhythmic pattern of eighth notes.
- Tpte. 1, 2, 3** (Trombones): Treble clef, starting with a triplet of eighth notes. A *p* dynamic marking is present at the end of the line.
- Tme. 1, 2, 3** (Trombones): Bass clef, starting with a triplet of eighth notes. A *p* dynamic marking is present at the end of the line.
- Bomb.** (Bombardone): Bass clef, starting with a triplet of eighth notes. A *p* dynamic marking is present at the end of the line.
- Tba. Bb.** (Tuba/Euphonium): Bass clef, playing a simple rhythmic pattern.
- Cb.** (Contrabass): Bass clef, playing a simple rhythmic pattern.
- Cx./tr.** (Cymbals/Triangles): Percussion clef, playing a rhythmic pattern.
- Pr./B.** (Percussion/Bass Drum): Percussion clef, playing a simple rhythmic pattern.



32 1 2 3 36 *f*

Fl.

Cl. 1 *f*

Cl. 2 *f*

Cl. 3 *f*

Sax. al. *f*

Sax. ten. *f*

Tr. 1 *f*

Tr. 2 *f*

Tr. 3 *f*

Tpt. 1 *f*

Tpt. 2 *f*

Tpt. 3 *f*

Tmne. 1 *f*

Tmne. 2 *f*

Tmne. 3 *f*

Bomb. *f*

Tba. B. *f*

Cb. *f*

Cx./tr. *f*

Pr./B. *f*

42

Fl.

Cl. 1

Cl. 2

Cl. 3

Sax. al.

Sax. ten.

Tr. 1

Tr. 2

Tr. 3

Tpte. 1

Tpte. 2

Tpte. 3

Trne. 1

Trne. 2

Trne. 3

Bomb.

Tba. B.

Cb.

Cx./tr.

Pr./B.

*p*

*p*

*p*



65

Fl.

Cl. 1

Cl. 2

Cl. 3

Sax. al.

Sax. ten.

Tr. 1

Tr. 2

Tr. 3

Tpte. 1

Tpte. 2

Tpte. 3

Trne. 1

Trne. 2

Trne. 3

Bomb.

Tba. Bb.

Cb.

Cx./tr.

Pr./B.

Detailed description: This is a page of a musical score for a full orchestra, page 8, starting at measure 65. The score is written in a key signature of three flats (B-flat major or D-flat minor) and a 4/4 time signature. The instruments listed on the left are: Flute (Fl.), Clarinets 1, 2, and 3 (Cl. 1, Cl. 2, Cl. 3), Saxophones Alto and Tenor (Sax. al., Sax. ten.), Trumpets 1, 2, and 3 (Tr. 1, Tr. 2, Tr. 3), Trombones 1, 2, and 3 (Tpte. 1, Tpte. 2, Tpte. 3), Bombardone (Bomb.), Tuba/Euphonium (Tba. Bb.), Cello/Double Bass (Cb.), and Percussion/Drum (Pr./B.). The Flute part features a melodic line with slurs and ties. The Clarinet and Saxophone parts have similar melodic lines. The Trumpet and Trombone parts play a rhythmic pattern of eighth notes. The Percussion part plays a steady eighth-note rhythm. The Bombardone part has a melodic line with slurs. The Tuba/Euphonium part has a rhythmic pattern of eighth notes. The Cello/Double Bass part has a rhythmic pattern of eighth notes. The Percussion/Drum part has a steady eighth-note rhythm.



77

Fl. 1. 2.

Cl. 1. 2. 3.

Sax. al. ten.

Tr. 1. 2. 3.

Tpte. 1. 2. 3.

Trne. 1. 2. 3.

Bomb.

Tba. Bb.

Cb.

Cx./tr.

Pr./B.

Detailed description: This is a page of a musical score, page 9, starting at measure 77. The score is for a full orchestra and woodwinds. The instruments listed on the left are: Flute (Fl.), Clarinet 1 (Cl. 1), Clarinet 2 (Cl. 2), Clarinet 3 (Cl. 3), Saxophone Alto (Sax. al.), Saxophone Tenor (Sax. ten.), Trumpet 1 (Tr. 1), Trumpet 2 (Tr. 2), Trumpet 3 (Tr. 3), Trombone 1 (Tpte. 1), Trombone 2 (Tpte. 2), Trombone 3 (Tpte. 3), Bombardone (Trne. 1), Trombone 2 (Trne. 2), Trombone 3 (Trne. 3), Bombardone (Bomb.), Tuba/Bass Drum (Tba. Bb.), Cymbals (Cb.), Cymbals/Trumpet (Cx./tr.), and Percussion/Bass Drum (Pr./B.). The music is in a key signature of three flats (B-flat major or D-flat minor) and a 4/4 time signature. The score features complex rhythmic patterns, including sixteenth and thirty-second notes, and various rests. There are first and second endings indicated by '1.' and '2.' above the final measures. The piece concludes with 'D.C. al Fine'.

# BICENTENÁRIO DA INDEPENDÊNCIA DO BRASIL

[Dobrado]

Flauta

Maestro Bacalhau

$\text{♩} = 112$

*f* 3

9 3 *p*

18

27 1. 2.

36 *f*

44 D.S. al Θ

52 *Fine* *p* 55

61

71

80 1. 2. D.C. al Fine

# BICENTENÁRIO DA INDEPENDÊNCIA DO BRASIL

Clarinete B $\flat$  1

[Dobrado]

Maestro Bacalhau

$\text{♩} = 112$

*f*

9

*p*

18

27

36

*f*

44

D.S. al  $\Phi$

52

Fine

*p*

55

61

72

80

D.C. al Fine

# BICENTENÁRIO DA INDEPENDÊNCIA DO BRASIL

Clarinete B $\flat$  2

[Dobrado]

Maestro Bacalhau

$\text{♩} = 112$

*f*

9

*p*

18

27

36

*f*

44

D.S. al  $\Phi$

52

Fine

55

*p*

60

70

79

D.C. al Fine

# BICENTENÁRIO DA INDEPENDÊNCIA DO BRASIL

Clarinete B $\flat$  3

[Dobrado]

Maestro Bacalhau

$\text{♩} = 112$

3  
*f*

9  
*p*

18

27  
1. 2.

36 **36**  
*f*

44 **D.S. al \phi**

52 **Fine** **55**  
*p*

60

70

79 **D.C. al Fine**  
1. 2.

# BICENTENÁRIO DA INDEPENDÊNCIA DO BRASIL

Sax Alto E♭

[Dobrado]

Maestro Bacalhau

♩ = 112

*f* 3

9 3 *p*

18  $\text{\textcircled{S}}$

25  $\text{\textcircled{\text{O}}}$

32 1. 2. 36 3 3 *f*

41 3

49 D.S. al  $\text{\textcircled{\text{O}}}$  Fine *p*

55 55 B♭

64

74

81 1. 2. D.C. al Fine

# BICENTENÁRIO DA INDEPENDÊNCIA DO BRASIL

[Dobrado]

Sax Tenor B♭

Maestro Bacalhau

♩ = 112

*f*

9

18 *p*

27 1. 2. *f*

36 **36**

44 *D.S. al fine*

52 *Fine* **55** *p*

61

71

80 1. 2. *D.C. al Fine*

# BICENTENÁRIO DA INDEPENDÊNCIA DO BRASIL

[Dobrado]

Trompa F 1

Maestro Bacalhau

♩ = 112

9 *f*

17 *p*

25

32 1. 2. 36 *f*

41

48 D.S. al  $\Phi$   $\Phi$  Fine

55 55 *p*

63

72

80 1. 2. D.C. al Fine



# BICENTENÁRIO DA INDEPENDÊNCIA DO BRASIL

Trompa F 2

[Dobrado]

Maestro Bacalhau

♩ = 112

10

18 **§**  
*p*

25  $\oplus$

32 1. 2. **36**  
*f*

41

48 **D.S. al  $\oplus$**   $\oplus$  **Fine**

55 **55**  
*p*

64

73

80 1. 2. **D.C. al Fine**

# BICENTENÁRIO DA INDEPENDÊNCIA DO BRASIL

Trompa F 3

[Dobrado]

Maestro Bacalhau

$\text{♩} = 112$

9

17  $\text{§}$   
*p*

25  $\text{⊕}$

32 1. 2. **36**  
*f*

41

48 *D.S. al  $\text{⊕}$*   $\text{⊕}$  *Fine*

55 **55**  
*p*

63

72

80 *D.C. al Fine*  
1. 2.

# BICENTENÁRIO DA INDEPENDÊNCIA DO BRASIL

[Dobrado]

Trompete B $\flat$  1

Maestro Bacalhau

$\text{♩} = 112$

*f*

9

*p*

18

27

36

*f*

44

D.S. al  $\phi$

*p*

52

Fine

55

*p*

61

72

81

1.

2. D.C. al Fine

# BICENTENÁRIO DA INDEPENDÊNCIA DO BRASIL

[Dobrado]

Trompete B $\flat$  2

Maestro Bacalhau

$\text{♩} = 112$

*f*

9

*p*

18

26

34

*f*

43

50

D.S. al  $\Phi$

*p*

55

*p*

64

72

81

1. 2. D.C. al Fine

# BICENTENÁRIO DA INDEPENDÊNCIA DO BRASIL

[Dobrado]

Trompete B $\flat$  3

Maestro Bacalhau

$\text{♩} = 112$

*f*

9

*p*

18

25

32

36

*f*

41

49

D.S. al  $\Phi$

*p*

Fine

55

68

78

D.C. al Fine

1. 2.

# BICENTENÁRIO DA INDEPENDÊNCIA DO BRASIL

Trombone 1

[Dobrado]

Maestro Bacalhau

$\text{♩} = 112$

*f*

9

18 *p*

27

36 **36**

45 *D.S. al  $\emptyset$*

53 *Fine* **55** *p*

62

72

81 *1.* *2. D.C. al Fine*

# BICENTENÁRIO DA INDEPENDÊNCIA DO BRASIL

Trombone 2

[Dobrado]

Maestro Bacalhau

$\text{♩} = 112$

*f* 3

9

18  $\text{♩}$   
*p*

27  $\text{♩}$  1. 2. *f* 3 3

36 **36** 3 3

45 *D.S. al  $\text{♩}$*   $\text{♩}$   $\text{^}$

53 *Fine* **55** *p*

62

72

81 1. 2. *D.C. al Fine*

# BICENTENÁRIO DA INDEPENDÊNCIA DO BRASIL

[Dobrado]

Trombone 3

Maestro Bacalhau

$\text{♩} = 112$

*f* 3

9

18  $\text{♩}$   
*p*

27  $\text{φ}$  1. 2. *f* 3 3

36 36 *f* 3 3

45 *f* D.S. al  $\text{φ}$   $\text{φ}$

53 *p* Fine 55

62

72

81 1. 2. D.C. al Fine



# BICENTENÁRIO DA INDEPENDÊNCIA DO BRASIL

Bombardino B $\flat$

[Dobrado]

Maestro Bacalhau

$\text{♩} = 112$

*f* 3

9 3

18 *p*

27 1. 2. 3 3 *f*

36 36 3 3

44 *p* D.S. al  $\text{⊕}$

52  $\text{⊕}$  *p* Fine 55

61

72

80 1. 2. *p* D.C. al Fine

# BICENTENÁRIO DA INDEPENDÊNCIA DO BRASIL

[Dobrado]

Tuba Bb

Maestro Bacalhau

♩ = 112

1. Musical staff 1: Bass clef, 2/4 time signature, key signature of two flats. Starts with a whole rest, then a series of eighth notes. Dynamics: *f*.

13 Musical staff 2: Bass clef, 2/4 time signature, key signature of two flats. Starts with a series of eighth notes, followed by a repeat sign and a section marked with a section sign (§). Dynamics: *p*.

23 Musical staff 3: Bass clef, 2/4 time signature, key signature of two flats. Continuation of the previous staff. Ends with a section sign (⊕).

32 Musical staff 4: Bass clef, 2/4 time signature, key signature of two flats. First ending (1.) and second ending (2.) with a trill. Measure 36 is marked. Dynamics: *f*.

41 Musical staff 5: Bass clef, 2/4 time signature, key signature of two flats. Continuation of the previous staff with triplets.

48 Musical staff 6: Bass clef, 2/4 time signature, key signature of two flats. Section marked D.S. al ⊕. Ends with a section sign (⊕).

Section marked Fine. Ends with a section sign (⊕).

55 Musical staff 8: Bass clef, 2/4 time signature, key signature of two flats. Measure 55 is marked. Dynamics: *p*.

63 Musical staff 9: Bass clef, 2/4 time signature, key signature of two flats. Continuation of the previous staff.

72 Musical staff 10: Bass clef, 2/4 time signature, key signature of two flats. Continuation of the previous staff.

80 Musical staff 11: Bass clef, 2/4 time signature, key signature of two flats. First ending (1.) and second ending (2.) leading to D.C. al Fine.

# BICENTENÁRIO DA INDEPENDÊNCIA DO BRASIL

Contrabaixo

[Dobrado]

Maestro Bacalhau

♩ = 112  
pizz.

13

23

32

41

48

D.S. al  $\oplus$   $\oplus$  Fine

55

63

72

80

D.C. al Fine

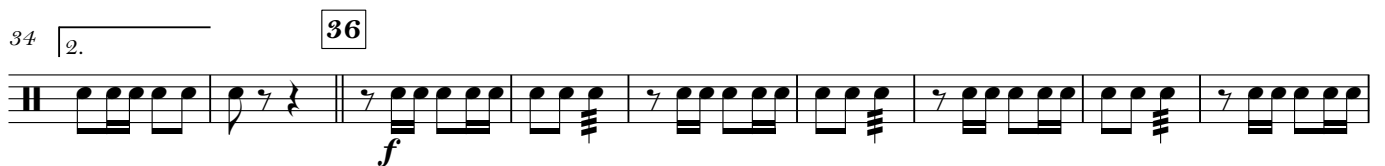
# BICENTENÁRIO DA INDEPENDÊNCIA DO BRASIL

Caixa/tarola

[Dobrado]

Maestro Bacalhau

♩ = 112



# BICENTENÁRIO DA INDEPENDÊNCIA DO BRASIL

[Dobrado]

Pratos/Bombo

Maestro Bacalhau

$\text{♩} = 112$

13 *f*

22

29 *p*

36 *f*

48 *f* D.S. al  $\Phi$  Fine

55 *p*

64

73

81 *p* D.C. al Fine

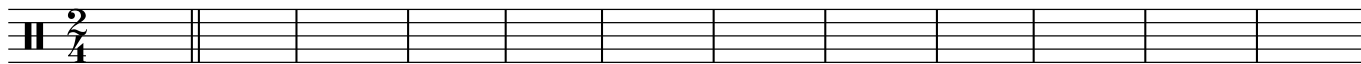
Percussão

# BICENTENÁRIO DA INDEPENDÊNCIA DO BRASIL

[Dobrado]

Maestro Bacalhau

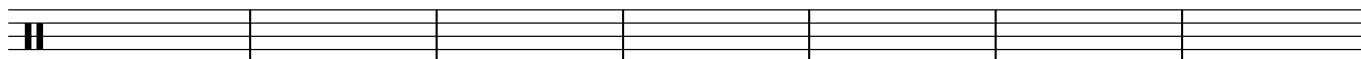
♩ = 112



13



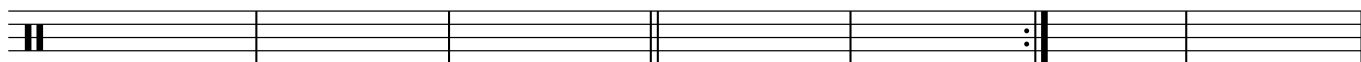
22



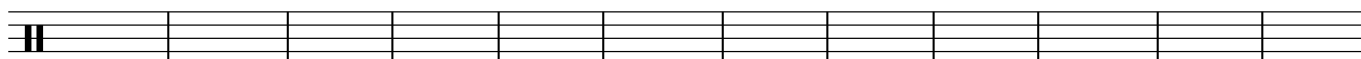
29



1. | 2.



36 **36**

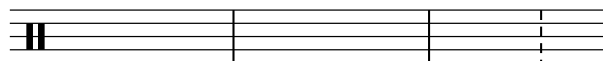
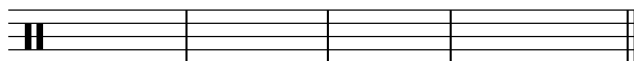


48

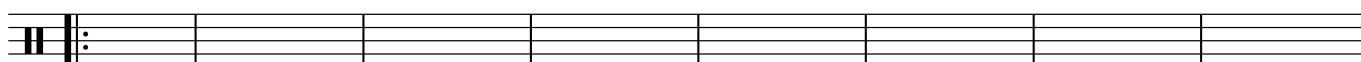
D.S. al



Fine



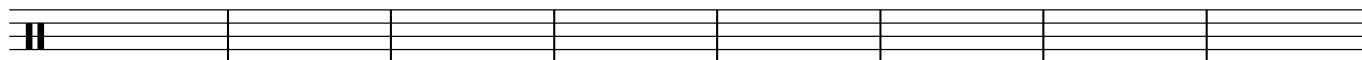
55 **55**



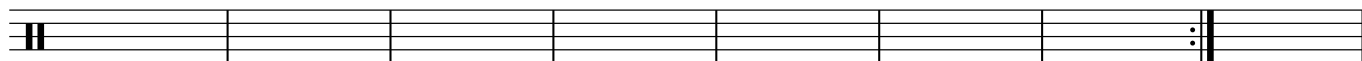
63



72



80



**D.C. al Fine**

1. | 2.