

# Free From Desire

Canção de Gala Rizzatto

Arr: Edimar Fernandes

♩ = 130

1° Trompete Bb *f*

2° Trompete Bb *f*

3° Trompete Bb *f*

Flugelhorn *p*

1° Trombone *f*

2° Trombone *f*

3° Trombone *f*

Euphonium Bb *p*

Euphonium C *p*

Tuba C *p*

Tuba Bb *p*

Prato

Caixa

Bumbo

The score is for a 4/4 piece in G major (one sharp) at a tempo of 130. The brass section consists of three trumpets (Bb), three trombones, and two euphoniums (Bb and C). The percussion section includes a snare drum, a cymbal, and a bass drum. The trumpets and trombones play a rhythmic eighth-note pattern with accents, while the euphoniums and tubas play sustained notes. The snare drum has a steady eighth-note pattern, and the bass drum has a sparse pattern.

1° Tpte.

2° Tpte.

3° Tpte.

Flug.

1° Trne.

2° Trne.

3° Trne.

Euph Sib.

Euph C.

Tba C.

Tba Bb.

Prt.

Cx.

Bb.

9

1° Tpte.   
2° Tpte.   
3° Tpte.   
Flug.   
1° Trne.   
2° Trne.   
3° Trne.   
Euph Sib.   
Euph C.   
Tba C.   
Tba Bb.   
Detailed description: This section contains the first nine staves of the score. The top three staves (1° Tpte., 2° Tpte., 3° Tpte.) feature a melodic line with eighth and sixteenth notes, starting on a dotted quarter note and ending with a quarter rest. The Flugelhorn staff has a long note with a slur, followed by a quarter rest and a final eighth-note figure. The three Trombone staves (1° Trne., 2° Trne., 3° Trne.) play a rhythmic pattern of quarter notes. The Euphonium and Tuba staves (Euph Sib., Euph C., Tba C., Tba Bb.) feature long notes with slurs, with the Euphonium and Contralto parts ending in eighth-note figures. The key signature is one sharp (F#) and the time signature is 4/4.

Prt.   
Cx.   
Bb.   
Detailed description: This section contains the last three staves of the score. The Percussion staff (Prt.) has a single symbol at the beginning of the first measure. The Cymbals staff (Cx.) shows a rhythmic pattern of quarter notes with rests. The Bass Drum staff (Bb.) shows a rhythmic pattern of quarter notes with rests. The key signature is one sharp (F#) and the time signature is 4/4.



1° Tpte.

Musical staff for 1° Tpte. in G major, starting with a piano (*p*) dynamic. The staff contains four measures of music, each featuring a whole note.

2° Tpte.

Musical staff for 2° Tpte. in G major, starting with a piano (*p*) dynamic. The staff contains four measures of music, each featuring a whole note.

3° Tpte.

Musical staff for 3° Tpte. in G major, starting with a piano (*p*) dynamic. The staff contains four measures of music, each featuring a whole note.

Flug.

Musical staff for Flugelhorn in G major. The staff contains four measures of music, featuring a melodic line with eighth notes and a half note.

1° Trne.

Musical staff for 1° Trone in G major, starting with a piano (*p*) dynamic. The staff contains four measures of music, each featuring a whole note.

2° Trne.

Musical staff for 2° Trone in G major, starting with a piano (*p*) dynamic. The staff contains four measures of music, each featuring a whole note.

3° Trne.

Musical staff for 3° Trone in G major, starting with a piano (*p*) dynamic. The staff contains four measures of music, each featuring a whole note.

Euph Sib.

Musical staff for Euphonium in G major. The staff contains four measures of music, featuring a melodic line with eighth notes and a half note.

Euph C.

Musical staff for Euphonium in C major. The staff contains four measures of music, featuring a melodic line with eighth notes and a half note.

Tba C.

Musical staff for Trombone in C major, starting with a piano (*p*) dynamic. The staff contains four measures of music, each featuring a whole note.

Tba Bb.

Musical staff for Trombone in Bb major, starting with a piano (*p*) dynamic. The staff contains four measures of music, each featuring a whole note.

Prt.

Musical staff for Percussion. The staff contains four measures of music, each featuring a whole rest.

Cx.

Musical staff for Cymbals, starting with a piano (*p*) dynamic. The staff contains four measures of music, each featuring a whole note.

Bb.

Musical staff for Bass Drum. The staff contains four measures of music, each featuring a whole rest.

17

1° Tpte. *p* *f*

2° Tpte. *p* *f*

3° Tpte. *p* *f*

Flug. *f*

1° Trne. *p* *f*

2° Trne. *p* *f*

3° Trne. *p* *f*

Euph Sib. *f*

Euph C. *f*

Tba C. *p* *f*

Tba Bb. *p* *f*

Prt. *f*

Cx. *p* *f*

Bb. *f*

Detailed description: This is a page of a musical score for a brass and percussion ensemble. The score is divided into two systems. The first system includes staves for 1st, 2nd, and 3rd Trumpets (Tpte.), Flugelhorn (Flug.), 1st, 2nd, and 3rd Trombones (Trne.), Euphonium Soprano (Euph Sib.), Euphonium Contrabasso (Euph C.), Trombone Contrabasso (Tba C.), and Trombone Bass (Tba Bb.). The second system includes staves for Percussion (Prt.), Cymbals (Cx.), and Bass Drum (Bb.). The key signature is one sharp (F#), and the time signature is 4/4. The score begins at measure 17. Dynamics range from piano (*p*) to fortissimo (*f*). The brass instruments play sustained notes in the first three measures, which then change to rhythmic patterns in the final measure. The percussion instruments play a steady pattern of notes and rests throughout the piece.

1° Tpte.

2° Tpte.

3° Tpte.

Flug.

1° Trne.

2° Trne.

3° Trne.

Euph Sib.

Euph C.

Tba C.

Tba Bb.

Prt.

Cx.

Bb.

4

4

4

27

1° Tpte.   
 2° Tpte.   
 3° Tpte.   
 Flug.   
 1° Trne.   
 2° Trne.   
 3° Trne.   
 Euph Sib.   
 Euph C.   
 Tba C.   
 Tba Bb.

Prt.   
 Cx.   
 Bb.

32

1° Tpte.

Musical staff for 1st Trumpet (1° Tpte.) in G major, starting at measure 32. The staff contains a melodic line with eighth and sixteenth notes.

2° Tpte.

Musical staff for 2nd Trumpet (2° Tpte.) in G major, starting at measure 32. The staff contains a melodic line with eighth and sixteenth notes.

3° Tpte.

Musical staff for 3rd Trumpet (3° Tpte.) in G major, starting at measure 32. The staff contains a melodic line with eighth and sixteenth notes.

Flug.

Musical staff for Flugelhorn (Flug.) in G major, starting at measure 32. The staff contains a melodic line with eighth and sixteenth notes.

1° Trne.

Musical staff for 1st Trombone (1° Trne.) in G major, starting at measure 32. The staff contains a melodic line with eighth and sixteenth notes.

2° Trne.

Musical staff for 2nd Trombone (2° Trne.) in G major, starting at measure 32. The staff contains a melodic line with eighth and sixteenth notes.

3° Trne.

Musical staff for 3rd Trombone (3° Trne.) in G major, starting at measure 32. The staff contains a melodic line with eighth and sixteenth notes.

Euph Sib.

Musical staff for Euphonium in Sib (Euph Sib.) in G major, starting at measure 32. The staff contains a melodic line with eighth and sixteenth notes.

Euph C.

Musical staff for Euphonium in C (Euph C.) in G major, starting at measure 32. The staff contains a melodic line with eighth and sixteenth notes.

Tba C.

Musical staff for Trombone in C (Tba C.) in G major, starting at measure 32. The staff contains a melodic line with eighth and sixteenth notes.

Tba Bb.

Musical staff for Trombone in Bb (Tba Bb.) in G major, starting at measure 32. The staff contains a melodic line with eighth and sixteenth notes.

Prt.

Drum staff (Prt.) showing a pattern of rests and slashes. A measure rest '4' is present in the first measure.

Cx.

Cymbal staff (Cx.) showing a pattern of rests and slashes. A measure rest '4' is present in the first measure.

Bb.

Bass Drum staff (Bb.) showing a pattern of rests and slashes. A measure rest '4' is present in the first measure.



36

1° Tpte.

2° Tpte.

3° Tpte.

Flug.

1° Trne.

2° Trne.

3° Trne.

Euph Sib.

Euph C.

Tba C.

Tba Bb.

Prt.

Cx.

Bb.

This musical score page contains ten staves for brass instruments and three for percussion. The brass section includes three trumpets (1°, 2°, 3°), Flugelhorn, three trombones (1°, 2°, 3°), Euphonium in Sib. (Soprano), Euphonium in C (Alto), Tuba in C (Alto), and Tuba in Bb (Bass). The percussion section includes Snare Drum (Prt.), Cymbals (Cx.), and Bass Drum (Bb.).

The score is in 4/4 time and features a key signature of one sharp (F#). It begins with a first ending bracket over the final two measures of the first system. The brass instruments play a rhythmic pattern of eighth notes, while the percussion instruments provide a steady accompaniment. The Cymbals part includes a dynamic marking of *mf* (mezzo-forte) and accents (>) over the notes.

41

1° Tpte. *f*

2° Tpte. *f*

3° Tpte. *f*

Flug. *p*

1° Trne. *f*

2° Trne. *f*

3° Trne. *f*

Euph Sib. *p*

Euph C. *p*

Tba C. *p*

Tba Bb. *p*

Prt. \*

Cx. *mf*

Bb.

46

1° Tpte. *f*

2° Tpte. *f*

3° Tpte. *f*

Flug. *f*

1° Trne. *f*

2° Trne. *f*

3° Trne. *f*

Euph Sib. *f*

Euph C. *f*

Tba C. *f*

Tba Bb. *f*

Prt. *f*

Cx. *f*

Bb. *f*

1° Tpte. 1.

2° Tpte.

3° Tpte.

Flug.

1° Trne.

2° Trne.

3° Trne.

Euph Sib.

Euph C.

Tba C.

Tba Bb.

Prt.

Cx.

Bb.

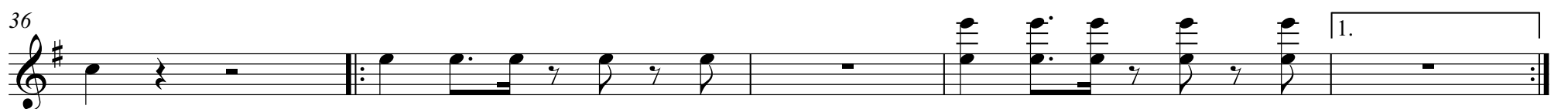
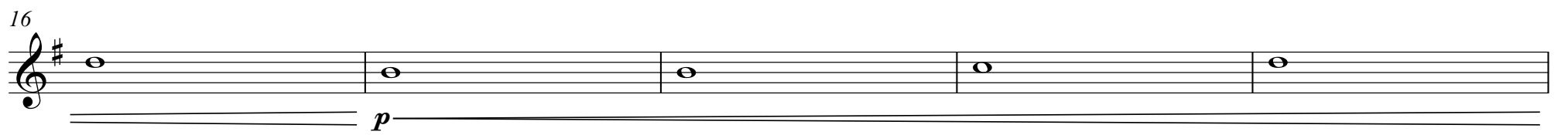
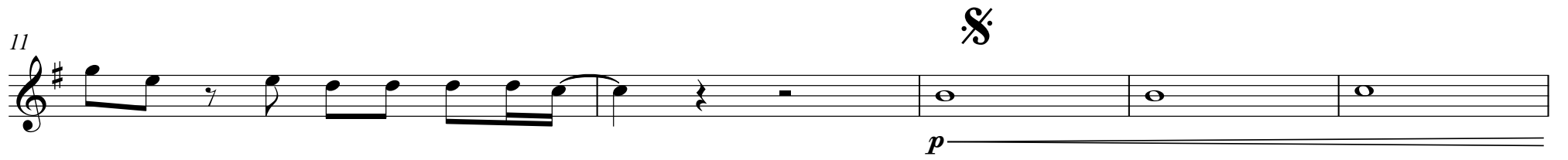
# Free From Desire

Canção de Gala Rizzatto

1º Trompete Bb

Arr: Edimar Fernandes

♩ = 130



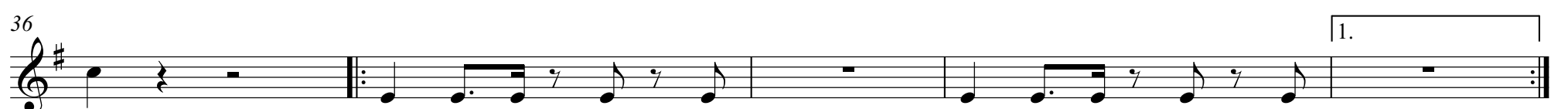
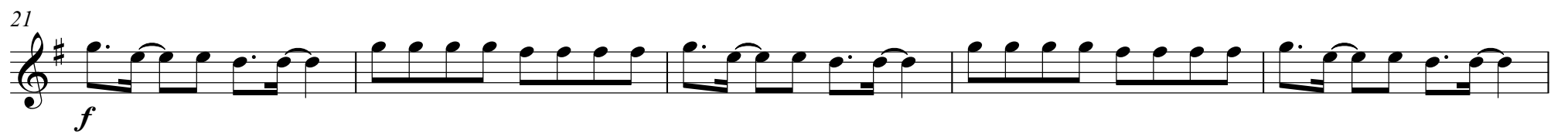
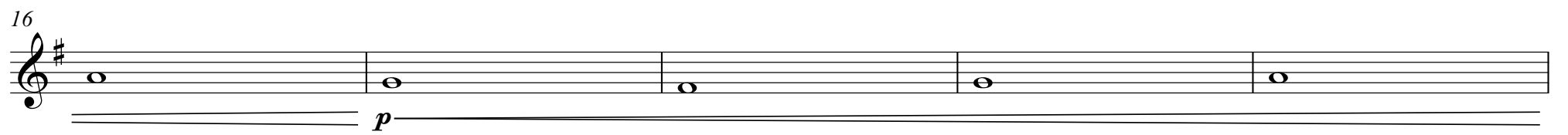
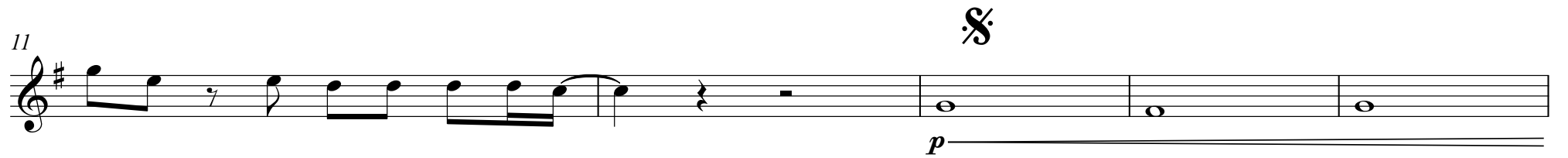
# Free From Desire

Canção de Gala Rizzatto

2º Trompete Bb

Arr: Edimar Fernandes

♩ = 130



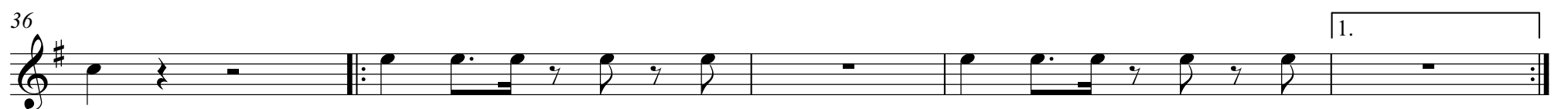
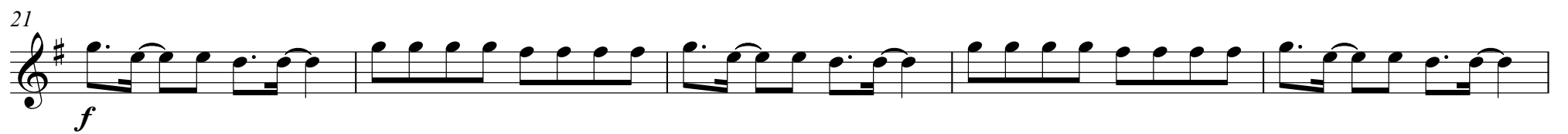
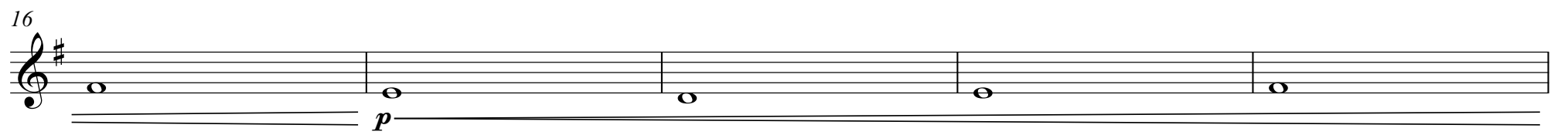
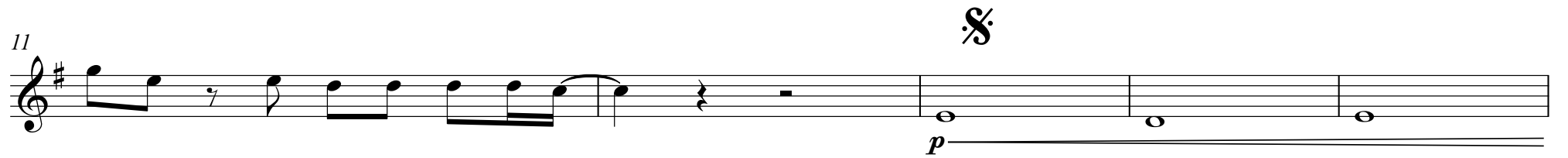
# Free From Desire

Canção de Gala Rizzatto

3º Trompete Bb

Arr: Edimar Fernandes

♩ = 130



# Free From Desire

Canção de Gala Rizzatto

Flugelhorn

Arr: Edimar Fernandes

♩ = 130

*p*

6

11

§

16

21

*f*

26

31

36

41

*p*

46

**D.S. al Fine**

*f*

51



# Free From Desire

Canção de Gala Rizzatto

1º Trombone

Arr: Edimar Fernandes

♩ = 130

*f*

6

11

*p*

16

*p*

21

*f*

26

31

36

1.

41

*f*

46

D.S. al Fine

51

1.

2.

# Free From Desire

Canção de Gala Rizzatto

Arr: Edimar Fernandes

♩ = 130

*f*

6

11

*p*

16

21

*f*

26

31

36

41

*f*

46

D.S. al Fine

51

# Free From Desire

Canção de Gala Rizzatto

3º Trombone

Arr: Edimar Fernandes

♩ = 130

*f*

6

11

*p*

16

*p*

21

*f*

26

31

36

41

*f*

46

*f* D.S. al Fine

51

# Free From Desire

Canção de Gala Rizzatto

Euphonium B♭

Arr: Edimar Fernandes

♩ = 130

*p*

6

11

§

16

21

*f*

26

31

36

41

*p*

46

**D.S. al Fine**

*f*

51

# Free From Desire

Canção de Gala Rizzatto

Arr: Edimar Fernandes

1 = 130

*p*

6

11

*f*

16

21

*f*

26

31

36

41

*p*

46

*f*

D.S. al Fine

51

# Free From Desire

Canção de Gala Rizzatto

Tuba C

Arr: Edimar Fernandes

♩ = 130

1

6

11

16

21

26

31

36

41

46

51

# Free From Desire

Canção de Gala Rizzatto

Tuba B♭

Arr: Edimar Fernandes

♩ = 130

1-5: Bass clef, key signature of one sharp (F#), 4/4 time signature. Five measures of whole notes with a slur over each note. Dynamics: *p*.

6-10: Bass clef, key signature of one sharp (F#), 4/4 time signature. Five measures of whole notes with a slur over each note.

11-15: Bass clef, key signature of one sharp (F#), 4/4 time signature. Measure 11: whole note with a slur. Measure 12: whole rest. Measure 13: whole note with a slur. Measure 14: whole rest. Measure 15: whole note with a slur. Dynamics: *p*. Section symbol § above measure 12.

16-20: Bass clef, key signature of one sharp (F#), 4/4 time signature. Measures 16-20: whole notes with a slur over each note. Dynamics: *p*.

21-25: Bass clef, key signature of one sharp (F#), 4/4 time signature. Measures 21-25: eighth notes with slurs. Dynamics: *f*.

26-30: Bass clef, key signature of one sharp (F#), 4/4 time signature. Measures 26-30: eighth notes with slurs.

31-35: Bass clef, key signature of one sharp (F#), 4/4 time signature. Measures 31-35: eighth notes with slurs.

36-40: Bass clef, key signature of one sharp (F#), 4/4 time signature. Measure 36: whole rest. Measure 37: repeat sign. Measures 37-40: eighth notes with slurs. First ending bracket above measures 37-40.

41-45: Bass clef, key signature of one sharp (F#), 4/4 time signature. Measure 41: whole rest. Measure 42: whole note with a slur. Measure 43: whole note with a slur. Measure 44: whole note with a slur. Measure 45: whole note with a slur. Dynamics: *p*.

46-50: Bass clef, key signature of one sharp (F#), 4/4 time signature. Measures 46-50: eighth notes with slurs. Dynamics: *D.S. al Fine* above measure 46.

51-55: Bass clef, key signature of one sharp (F#), 4/4 time signature. Measures 51-54: eighth notes with slurs. Measure 55: whole rest. First ending bracket above measures 51-54, second ending bracket above measure 55.

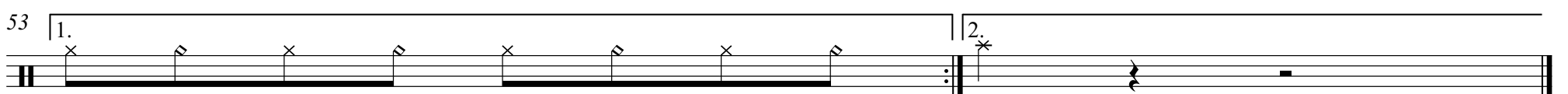
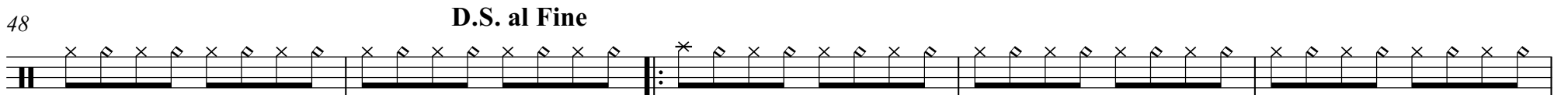
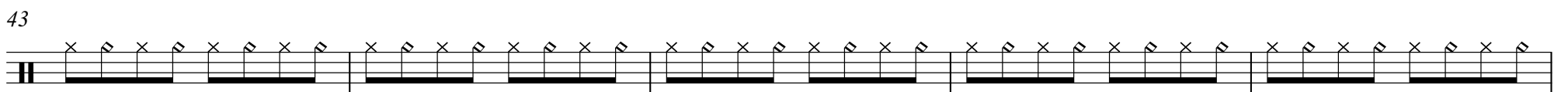
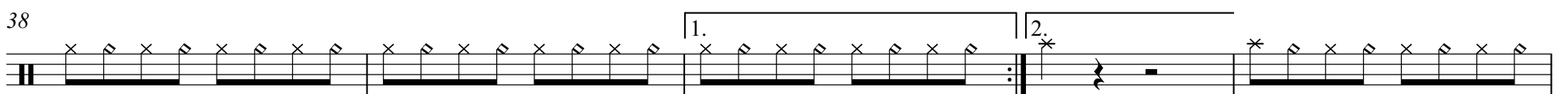
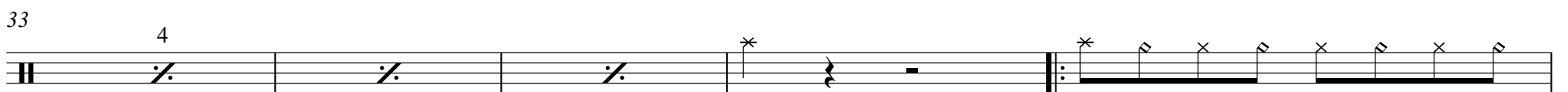
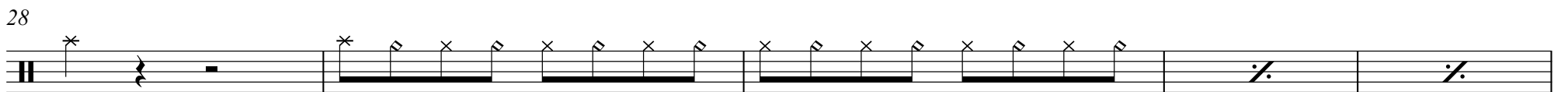
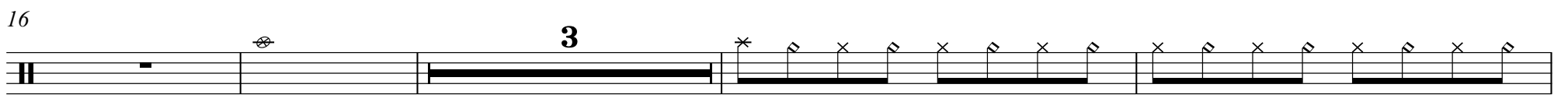
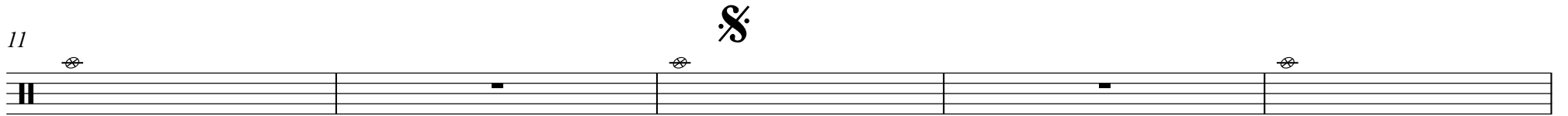
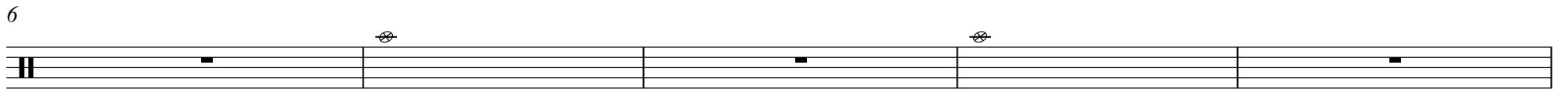
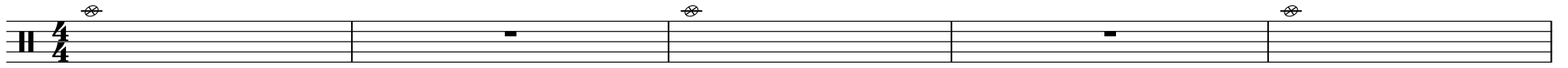
# Free From Desire

Canção de Gala Rizzatto

Prato

Arr: Edimar Fernandes

♩ = 130





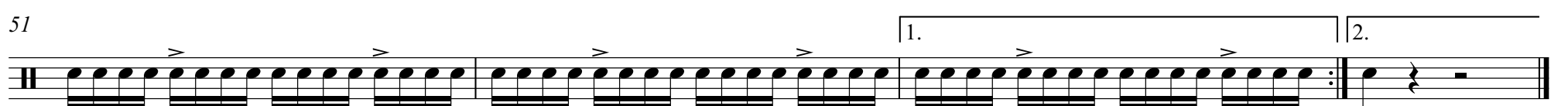
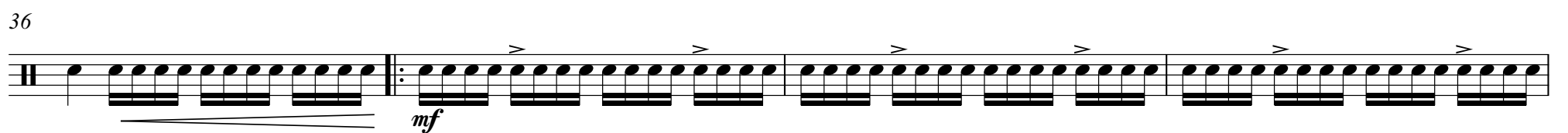
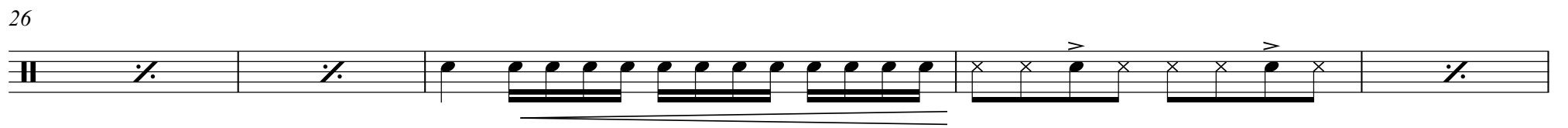
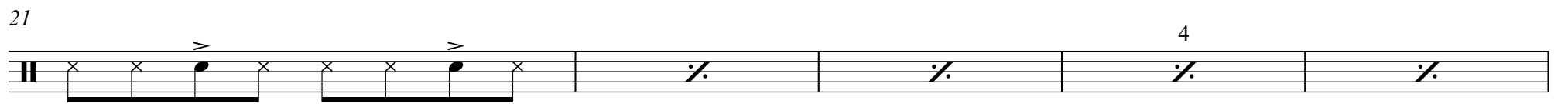
# Free From Desire

Canção de Gala Rizzatto

Caixa

Arr: Edimar Fernandes

♩ = 130



# Free From Desire

Canção de Gala Rizzatto

Bumbo

Arr: Edimar Fernandes

♩ = 130

